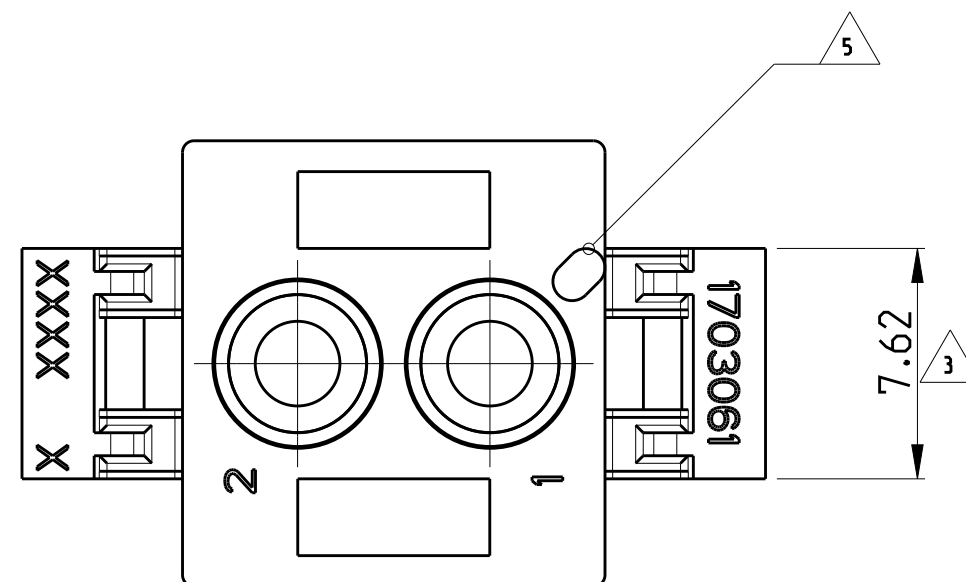
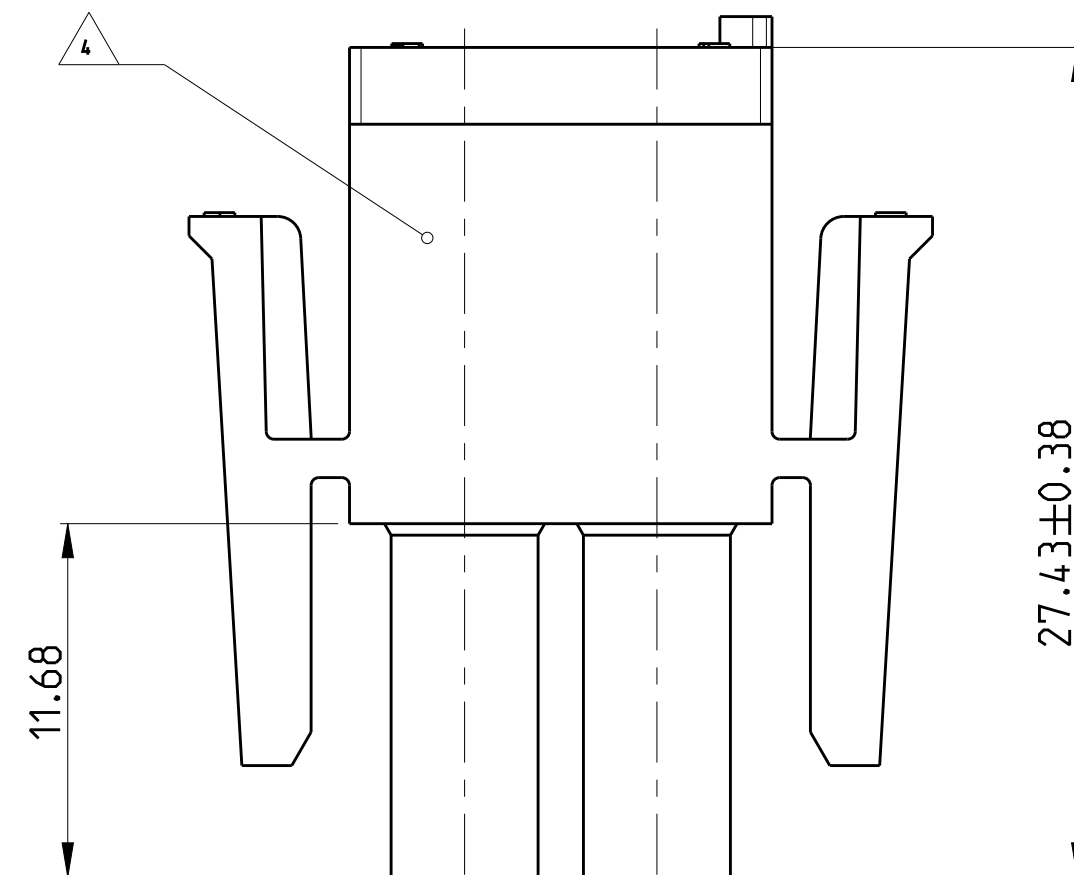
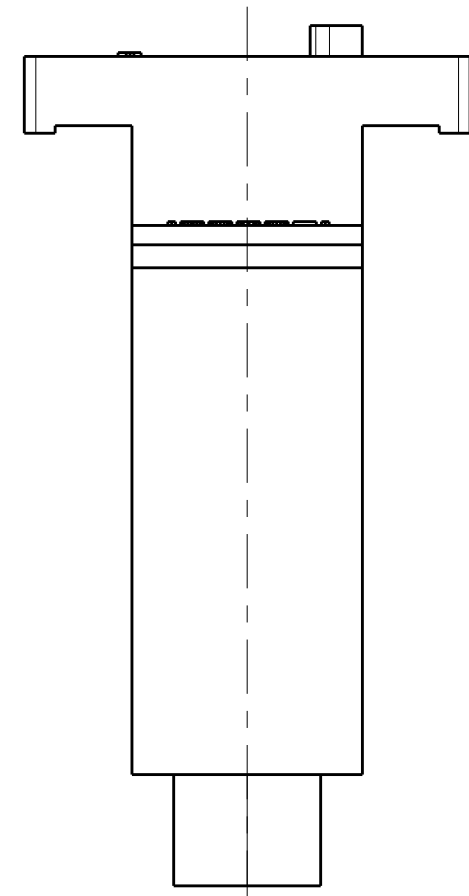
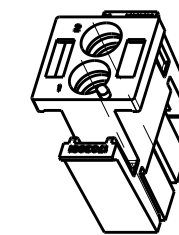



LOC	DIST	REVISIONS					
A1	2	P	LTR	DESCRIPTION	DATE	DWN	APVD
			B	ADDED DASHES: -2/-3/-4	17OCT2008	JS	PEG
			B1	ECR-13-010044	24 JUN2013	MGT	R.P
			B2	ECR-13-016227	11NOV2013	KKB	R.P
			B3	ECR-13-018957	13DEC 2013	KKB	RRP





- 1 MATES WITH APPROPRIATE UNIVERSAL MATE-N-LOK CAP OR HEADER
- 2 SMALL NICKS ARE PERMITTED ON THE CIRCUIT TOWERS WHICH COULD INCREASE THE INITIAL HOUSING MATING FORCE BY UP TO 4.4 NEWTONS. NO INDIVIDUAL NICKED TOWER SHALL INCREASE THIS FORCE BY OVER 5.5 NEWTONS.
- 3 DIMENSION INDICATED IS AS MOLDED. ADDITIONAL GROWTH DUE TO SUBSEQUENT MOISTURE ABSORPTION MAY OCCUR
- 4 UNDERWRITERS RECOGNIZED COMPONENT LOGO AND CSA CERTIFICATION LOGO TO BE LOCATED ONCE ON ANY SIDE OF HOUSING
- 5 POSITION #1 LOCATOR FEATURE MAY BE ROUND OR OBLONG (AS DEPICTED)
- 6 MATERIAL CORRESPONDING TO THE REQUIREMENTS OF IEC 60335 (INCL. GLOW WIRE TEST 750 ° C, WITHOUT FLAME)
- 7 PRELIMINARY PART NOT RELEASED FOR PRODUCTION



1:1

	1-1703061-2	A	PA66 UL94 V0 GW T 750 °C	NATURAL
	1-1703061-1	1	PA6 UL94 V0	NATURAL
	1703061-4	A	PA6 UL94 V2	BLACK
	1703061-3	A	PA6 UL94 V2	RED
	1703061-2	A	PA6 UL94 V2	BLUE
	1703061-1	A	PA6 UL94 V2	NATURAL
REMARK	PN	REV	MATERIAL	COLOUR

THIS DRAWING IS A CONTROLLED DOCUMENT.		DWN 17OCT2008 MAHNKE, B.		TE Connectivity	
DIMENSIONS: mm		CHK 26APR2004 ZITZ, A.		 TE Connectivity NAME PLUG, 2 CIRCUIT, UNIVERSAL MATE-N-LOK -	
		APVD 27APR2004 BLICHER, M.			
		PRODUCT SPEC			
		APPLICATION SPEC			
TOLERANCES UNLESS OTHERWISE SPECIFIED:		-		SIZE CAGE CODE DRAWING NO	
0 PLC ± 1 PLC ± 2 PLC ±0.13 3 PLC ± 4 PLC ± ANGLES ±0°30' FINISH		- WEIGHT 2.422 g		A2 00779 C-1703061	
MATERIAL 6 PA 6		CUSTOMER DRAWING		SCALE 4:1	SHEET 1 OF 1
				REV B3	