

Package Dimensions
SMP3003-DL-1E

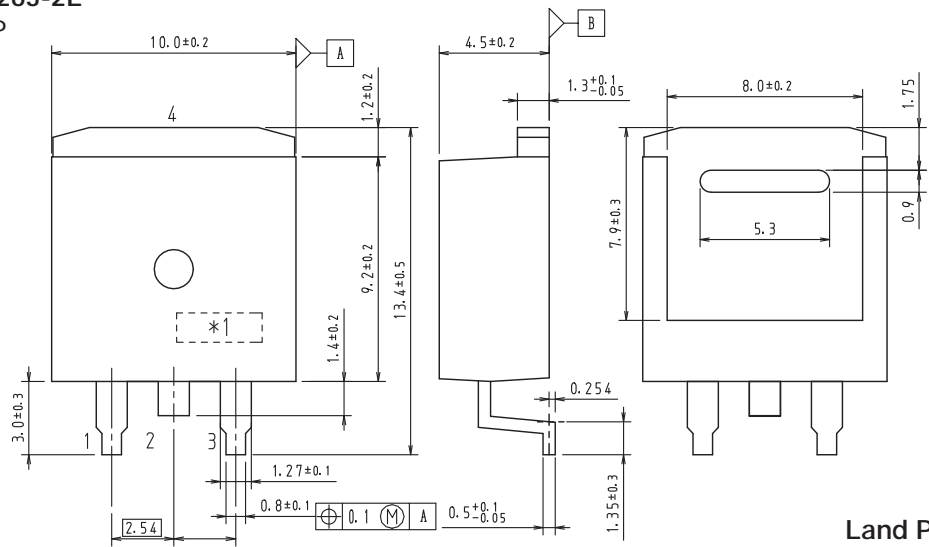
D2PAK/TO-263-2L

CASE 418AP

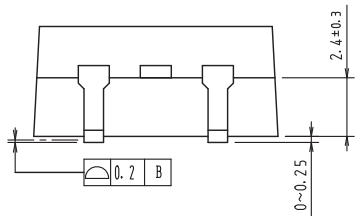
ISSUE O

Unit : mm

- 1: Gate
2: Drain
3: Source
4: Drain

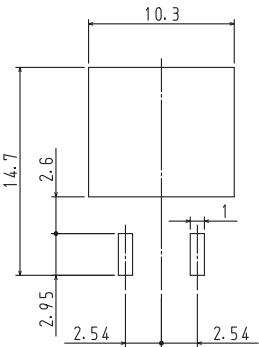


Land Pattern Example

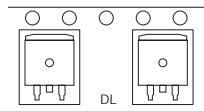


1. These dimension do not include mold protrusion
2. Pin2 is idle pin with electrical designation only carried

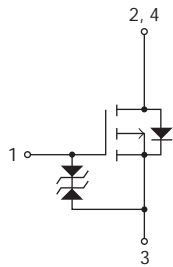
*1: Lot indication



Packing Type: DL



Electrical Connection

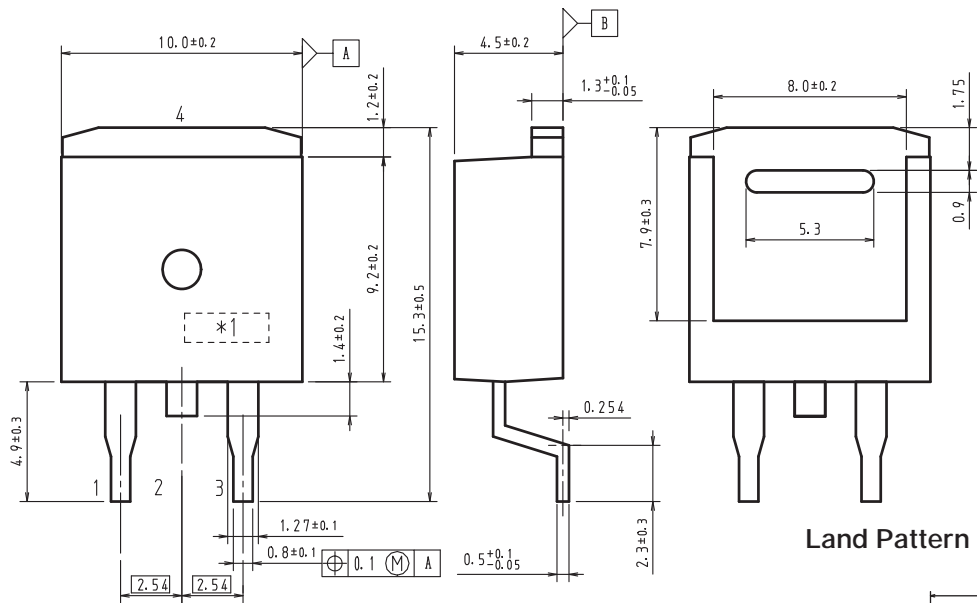


SMP3003

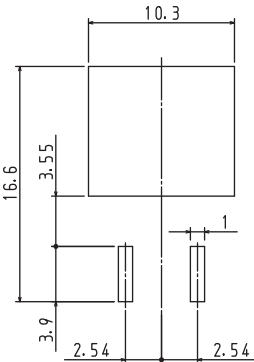
Package Dimensions
SMP3003-TL-1E

Unit : mm

- 1: Gate
2: Drain
3: Source
4: Drain



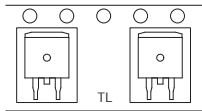
Land Pattern Example



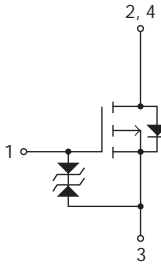
1. These dimension do not include mold protrusion
2. Pin2 is idle pin with electrical designation only carried

*1: Lot indication

Packing Type: TL



Electrical Connection



SMP3003

Ordering & Package Information

Device	Package	Shipping	memo
SMP3003-DL-1E	TO-263-2L SC-83, TO-263	800 pcs./reel	Pb-Free
SMP3003-TL-1E	TO-263		

Marking

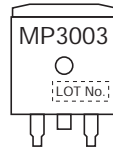


Fig.1 Unclamped Inductive Switching Test Circuit

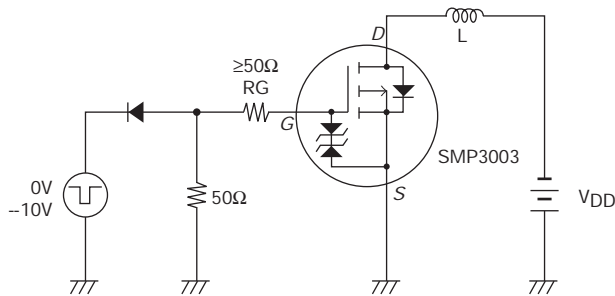


Fig.2 Switching Time Test Circuit

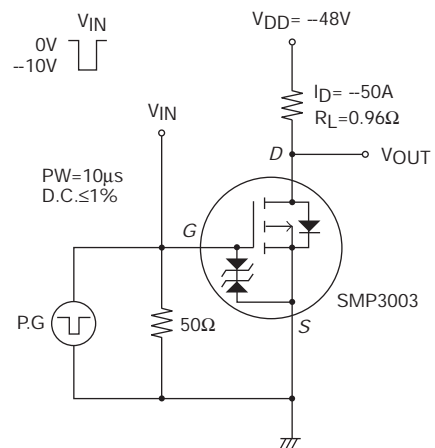
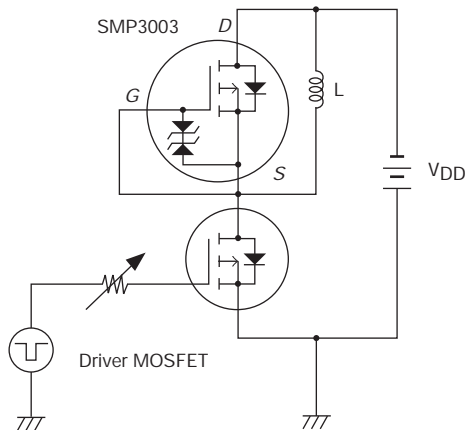


Fig.3 Reverse Recovery Time Test Circuit



Note on usage : Since the SMP3003 is a MOSFET product, please avoid using this device in the vicinity of highly charged objects.

ON Semiconductor and the ON logo are registered trademarks of Semiconductor Components Industries, LLC (SCILLC). SCILLC owns the rights to a number of patents, trademarks, copyrights, trade secrets, and other intellectual property. A listing of SCILLC's product/patent coverage may be accessed at www.onsemi.com/site/pdf/Patent-Marking.pdf. SCILLC reserves the right to make changes without further notice to any products herein. SCILLC makes no warranty, representation or guarantee regarding the suitability of its products for any particular purpose, nor does SCILLC assume any liability arising out of the application or use of any product or circuit, and specifically disclaims any and all liability, including without limitation special, consequential or incidental damages. "Typical" parameters which may be provided in SCILLC data sheets and/or specifications can and do vary in different applications and actual performance may vary over time. All operating parameters, including "Typicals" must be validated for each customer application by customer's technical experts. SCILLC does not convey any license under its patent rights nor the rights of others. SCILLC products are not designed, intended, or authorized for use as components in systems intended for surgical implant into the body, or other applications intended to support or sustain life, or for any other application in which the failure of the SCILLC product could create a situation where personal injury or death may occur. Should Buyer purchase or use SCILLC products for any such unintended or unauthorized application, Buyer shall indemnify and hold SCILLC and its officers, employees, subsidiaries, affiliates, and distributors harmless against all claims, costs, damages, and expenses, and reasonable attorney fees arising out of, directly or indirectly, any claim of personal injury or death associated with such unintended or unauthorized use, even if such claim alleges that SCILLC was negligent regarding the design or manufacture of the part. SCILLC is an Equal Opportunity/Affirmative Action Employer. This literature is subject to all applicable copyright laws and is not for resale in any manner.