

FEATURES AND BENEFITS (continued)

- 3.3 V, single supply operation
- Output voltage proportional to AC or DC current
- Factory-trimmed sensitivity and quiescent output voltage for improved accuracy
- Chopper stabilization results in extremely stable quiescent output voltage
- Nearly zero magnetic hysteresis
- Ratiometric output from supply voltage

DESCRIPTION (continued)

The ACS725 is provided in a small, low-profile surface-mount SOIC8 package. The leadframe is plated with 100% matte tin, which is compatible with standard lead (Pb) free printed circuit board assembly processes. Internally, the device is Pb-free, except for flip-chip high-temperature Pb-based solder balls, currently exempt from RoHS. The device is fully calibrated prior to shipment from the factory.

SELECTION GUIDE

Part Number	I_{PR} (A)	Sens(Typ) at $V_{CC} = 3.3\text{ V}$ (mV/A)	T_A (°C)	Packing [1]
ACS725LLCTR-05AB-T	±5	264	-40 to 150	Tape and Reel, 3000 pieces per reel
ACS725LLCTR-10AB-T	±10	132		
ACS725LLCTR-10AU-T	10	264		
ACS725LLCTR-20AB-T	±20	66		
ACS725LLCTR-20AB-T-H [2]	±20	66		
ACS725LLCTR-20AU-T	20	132		
ACS725LLCTR-30AB-T	±30	44		
ACS725LLCTR-30AB-T-H [2]	±30	44		
ACS725LLCTR-30AU-T	30	88		
ACS725LLCTR-40AB-T	±40	33		
ACS725LLCTR-50AB-T	±50	26.4		

[1] Contact Allegro for additional packing options.

[2] -H denotes 100% cold calibration at the Allegro factory for improved accuracy.

SPECIFICATIONS

ABSOLUTE MAXIMUM RATINGS

Characteristic	Symbol	Notes	Rating	Units
Supply Voltage	V_{CC}		6	V
Reverse Supply Voltage	V_{RCC}		-0.1	V
Output Voltage	V_{IOUT}		$V_{CC} + 0.5$	V
Reverse Output Voltage	V_{RIOUT}		-0.1	V
Operating Ambient Temperature	T_A	Range L	-40 to 150	°C
Junction Temperature	$T_J(\text{max})$		165	°C
Storage Temperature	T_{stg}		-65 to 165	°C

ISOLATION CHARACTERISTICS

Characteristic	Symbol	Notes	Rating	Unit
Dielectric Surge Strength Test Voltage	V_{SURGE}	Tested ± 5 pulses at 2/minute in compliance to IEC 61000-4-5 1.2 μs (rise) / 50 μs (width).	6000	V
Dielectric Strength Test Voltage	V_{ISO}	Agency type-tested for 60 seconds per UL standard 60950-1 (edition 2). Production tested at V_{ISO} for 1 second, in accordance with UL 60950-1 (edition 2).	2400	V_{RMS}
Working Voltage for Basic Isolation	V_{WVBI}	Maximum approved working voltage for basic (single) isolation according UL 60950-1 (edition 2)	420	V_{pk} or VDC
			297	V_{rms}
Clearance	D_{cl}	Minimum distance through air from IP leads to signal leads	4.2	mm
Creepage	D_{cr}	Minimum distance along package body from IP leads to signal leads	4.2	mm
Comparative Tracking Index	CTI	Material Group II	400 to 599	V

THERMAL CHARACTERISTICS

Characteristic	Symbol	Test Conditions*	Value	Units
Package Thermal Resistance (Junction to Ambient)	$R_{\theta JA}$	Mounted on the Allegro 85-0140 evaluation board with 800 mm ² of 4 oz. copper on each side, connected to pins 1 and 2, and to pins 3 and 4, with thermal vias connecting the layers. Performance values include the power consumed by the PCB.	23	°C/W
Package Thermal Resistance (Junction to Lead)	$R_{\theta JL}$	Mounted on the Allegro ASEK725 evaluation board.	5	°C/W

*Additional thermal information available on the Allegro website.

Automotive-Grade, Galvanically Isolated Current Sensor IC with Common-Mode Field Rejection in a Small Footprint SOIC8 Package



Package LC, 8-Pin SOICN

Pinout Diagram

4

COMMON ELECTRICAL CHARACTERISTICS ^[1]: Valid through the full range of T_A , $V_{CC} = 3.3\text{ V}$, $C_F = 0$, unless otherwise specified

Characteristic	Symbol	Test Conditions	Min.	Typ.	Max.	Unit
Supply Voltage	V_{CC}		3	3.3	3.6	V
Supply Current	I_{CC}	$V_{CC} = 3.3\text{ V}$, output open	–	10	14	mA
Output Capacitance Load	C_L	VIOOUT to GND	–	–	10	nF
Output Resistive Load	R_L	VIOOUT to GND	4.7	–	–	k Ω
Primary Conductor Resistance	R_{IP}	$T_A = 25^\circ\text{C}$	–	1.2	–	m Ω
Internal Filter Resistance ^[2]	$R_{F(int)}$		–	1.8	–	k Ω
Common Mode Field Rejection Ratio	CMFRR	Uniform external magnetic field	–	40	–	dB
Primary Hall Coupling Factor	G1	$T_A = 25^\circ\text{C}$	–	11	–	G/A
Secondary Hall Coupling Factor	G2	$T_A = 25^\circ\text{C}$	–	2.8	–	G/A
Hall plate Sensitivity Matching	Sens _{match}	$T_A = 25^\circ\text{C}$	–	± 1	–	%
Rise Time	t_r	$I_P = I_P(\text{max})$, $T_A = 25^\circ\text{C}$, $C_L = 1\text{ nF}$	–	3	–	μs
Propagation Delay	t_{pd}	$I_P = I_P(\text{max})$, $T_A = 25^\circ\text{C}$, $C_L = 1\text{ nF}$	–	2	–	μs
Response Time	t_{RESPONSE}	$I_P = I_P(\text{max})$, $T_A = 25^\circ\text{C}$, $C_L = 1\text{ nF}$	–	4	–	μs
Bandwidth	BW	Small signal –3 dB; $C_L = 1\text{ nF}$	–	120	–	kHz
Noise Density	I_{ND}	Input referenced noise density; $T_A = 25^\circ\text{C}$, $C_L = 1\text{ nF}$	–	200	–	$\mu\text{A}_{(rms)}/\sqrt{\text{Hz}}$
Noise	I_N	Input referenced noise: $C_F = 4.7\text{ nF}$, $C_L = 1\text{ nF}$, BW = 18 kHz, $T_A = 25^\circ\text{C}$	–	27	–	$\text{mA}_{(rms)}$
Nonlinearity	E_{LIN}	Through full range of I_P	–1.5	–	+1.5	%
Sensitivity Ratiometry Coefficient	SENS_RAT_COEF	$V_{CC} = 3.0\text{ to }3.6\text{ V}$, $T_A = 25^\circ\text{C}$	–	1.3	–	–
Zero Current Output Ratiometry Coefficient	QVO_RAT_COEF	$V_{CC} = 3.0\text{ to }3.6\text{ V}$, $T_A = 25^\circ\text{C}$	–	1	–	–
Saturation Voltage ^[3]	V_{OH}	$R_L = 4.7\text{ k}\Omega$	–	$V_{CC} - 0.3$	–	V
	V_{OL}	$R_L = 4.7\text{ k}\Omega$	–	0.3	–	V
Power-On Time	t_{PO}	Output reaches 90% of steady-state level, $T_A = 25^\circ\text{C}$, $I_P = I_{PR}(\text{max})$ applied	–	80	–	μs
Shorted Output to Ground Current	$I_{sc(gnd)}$	$T_A = 25^\circ\text{C}$	–	3.3	–	mA
Shorted Output to V_{CC} Current	$I_{sc(vcc)}$	$T_A = 25^\circ\text{C}$	–	45	–	mA

^[1] Device may be operated at higher primary current levels, I_P , ambient temperatures, T_A , and internal leadframe temperatures, provided the Maximum Junction Temperature, $T_J(\text{max})$, is not exceeded.

^[2] $R_{F(int)}$ forms an RC circuit via the FILTER pin.

^[3] The sensor IC will continue to respond to current beyond the range of I_P until the high or low saturation voltage; however, the nonlinearity in this region will be worse than through the rest of the measurement range.

xLLCTR-05AB PERFORMANCE CHARACTERISTICS: T_A Range L, valid at $T_A = -40^\circ\text{C}$ to 150°C , $V_{CC} = 3.3\text{ V}$, unless otherwise specified

Characteristic	Symbol	Test Conditions	Min.	Typ. [1]	Max.	Unit
NOMINAL PERFORMANCE						
Current Sensing Range	I _{PR}		−5	−	5	A
Sensitivity	Sens	I _{PR(min)} < I _P < I _{PR(max)}	−	264	−	mV/A
Zero Current Output Voltage	V _{IOUT(Q)}	Unidirectional; I _P = 0 A	−	V _{CC} × 0.5	−	V
ACCURACY PERFORMANCE						
Total Output Error [2]	E _{TOT}	I _P = I _{PR(max)} ; T _A = 25°C to 150°C	−2.5	±0.9	2.5	%
		I _P = I _{PR(max)} ; T _A = −40°C to 25°C	−6	±4	6	%
TOTAL OUTPUT ERROR COMPONENTS [3] E _{TOT} = E _{SENS} + 100 x V _{OE} /(Sens x I _P)						
Sensitivity Error	E _{sens}	I _P = I _{PR(max)} ; T _A = 25°C to 150°C	−1.5	±0.9	1.5	%
		I _P = I _{PR(max)} ; T _A = −40°C to 25°C	−5.5	±4	5.5	%
Offset Voltage	V _{OE}	I _P = 0 A; T _A = 25°C to 150°C	−15	±5	15	mV
		I _P = 0 A; T _A = −40°C to 25°C	−30	±15	30	mV
LIFETIME DRIFT CHARACTERISTICS						
Sensitivity Error Lifetime Drift	E _{sens_drift}		−3	±1	3	%
Total Output Error Lifetime Drift	E _{tot_drift}		−3	±1	3	%

[1] Typical values with \pm are 3 sigma values

[2] Percentage of I_P , with $I_P = I_{PR(max)}$

[3] A single part will not have both the maximum/minimum sensitivity error and maximum/minimum offset voltage, as that would violate the maximum/minimum total output error specification. Also, 3 sigma distribution values are combined by taking the square root of the sum of the squares. See Application Information section.

xLLCTR-10AB PERFORMANCE CHARACTERISTICS: T_A Range L, valid at $T_A = -40^\circ\text{C}$ to 150°C , $V_{CC} = 3.3\text{ V}$, unless otherwise specified

Characteristic	Symbol	Test Conditions	Min.	Typ. [1]	Max.	Unit
NOMINAL PERFORMANCE						
Current Sensing Range	I _{PR}		−10	−	10	A
Sensitivity	Sens	I _{PR(min)} < I _P < I _{PR(max)}	−	132	−	mV/A
Zero Current Output Voltage	V _{IOUT(Q)}	Unidirectional; I _P = 0 A	−	V _{CC} × 0.5	−	V
ACCURACY PERFORMANCE						
Total Output Error [2]	E _{TOT}	I _P = I _{PR(max)} ; T _A = 25°C to 150°C	−2	±0.8	2	%
		I _P = I _{PR(max)} ; T _A = −40°C to 25°C	−6	±4	6	%
TOTAL OUTPUT ERROR COMPONENTS [3] E _{TOT} = E _{SENS} + 100 x V _{OE} /(Sens x I _P)						
Sensitivity Error	E _{sens}	I _P = I _{PR(max)} ; T _A = 25°C to 150°C	−1.5	±0.8	1.5	%
		I _P = I _{PR(max)} ; T _A = −40°C to 25°C	−5.5	±4	5.5	%
Offset Voltage	V _{OE}	I _P = 0 A; T _A = 25°C to 150°C	−10	±4	10	mV
		I _P = 0 A; T _A = −40°C to 25°C	−30	±15	30	mV
LIFETIME DRIFT CHARACTERISTICS						
Sensitivity Error Lifetime Drift	E _{sens_drift}		−3	±1	3	%
Total Output Error Lifetime Drift	E _{tot_drift}		−3	±1	3	%

[1] Typical values with \pm are 3 sigma values

[2] Percentage of I_P , with $I_P = I_{PR(max)}$

[3] A single part will not have both the maximum/minimum sensitivity error and maximum/minimum offset voltage, as that would violate the maximum/minimum total output error specification. Also, 3 sigma distribution values are combined by taking the square root of the sum of the squares. See Application Information section.

xLLCTR-10AU PERFORMANCE CHARACTERISTICS: T_A Range L, valid at $T_A = -40^\circ\text{C}$ to 150°C , $V_{CC} = 3.3\text{ V}$, unless otherwise specified

Characteristic	Symbol	Test Conditions	Min.	Typ. [1]	Max.	Unit
NOMINAL PERFORMANCE						
Current Sensing Range	I _{PR}		0	–	10	A
Sensitivity	Sens	I _{PR(min)} < I _P < I _{PR(max)}	–	264	–	mV/A
Zero Current Output Voltage	V _{IOUT(Q)}	Unidirectional; I _P = 0 A	–	V _{CC} × 0.1	–	V
ACCURACY PERFORMANCE						
Total Output Error [2]	E _{TOT}	I _P = I _{PR(max)} ; T _A = 25°C to 150°C	–2.5	±0.9	2.5	%
		I _P = I _{PR(max)} ; T _A = –40°C to 25°C	–6	±4	6	%
TOTAL OUTPUT ERROR COMPONENTS [3] E _{TOT} = E _{SENS} + 100 x V _{OE} /(Sens x I _P)						
Sensitivity Error	E _{sens}	I _P = I _{PR(max)} ; T _A = 25°C to 150°C	–2	±0.9	2	%
		I _P = I _{PR(max)} ; T _A = –40°C to 25°C	–5.5	±4	5.5	%
Offset Voltage	V _{OE}	I _P = 0 A; T _A = 25°C to 150°C	–15	±5	15	mV
		I _P = 0 A; T _A = –40°C to 25°C	–30	±15	30	mV
LIFETIME DRIFT CHARACTERISTICS						
Sensitivity Error Lifetime Drift	E _{sens_drift}		–3	±1	3	%
Total Output Error Lifetime Drift	E _{tot_drift}		–3	±1	3	%

[1] Typical values with \pm are 3 sigma values

[2] Percentage of I_P , with $I_P = I_{PR(max)}$.

[3] A single part will not have both the maximum/minimum sensitivity error and maximum/minimum offset voltage, as that would violate the maximum/minimum total output error specification. Also, 3 sigma distribution values are combined by taking the square root of the sum of the squares. See Application Information section.

xLLCTR-20AU PERFORMANCE CHARACTERISTICS: T_A Range L, valid at $T_A = -40^\circ\text{C}$ to 150°C , $V_{CC} = 3.3\text{ V}$, unless otherwise specified

Characteristic	Symbol	Test Conditions	Min.	Typ. [1]	Max.	Unit
NOMINAL PERFORMANCE						
Current Sensing Range	I _{PR}		0	–	20	A
Sensitivity	Sens	I _{PR(min)} < I _P < I _{PR(max)}	–	132	–	mV/A
Zero Current Output Voltage	V _{IOUT(Q)}	Unidirectional; I _P = 0 A	–	V _{CC} × 0.1	–	V
ACCURACY PERFORMANCE						
Total Output Error [2]	E _{TOT}	I _P = I _{PR(max)} ; T _A = 25°C to 150°C	–2	±0.8	2	%
		I _P = I _{PR(max)} ; T _A = –40°C to 25°C	–6	±4	6	%
TOTAL OUTPUT ERROR COMPONENTS [3] E _{TOT} = E _{SENS} + 100 x V _{OE} /(Sens x I _P)						
Sensitivity Error	E _{sens}	I _P = I _{PR(max)} ; T _A = 25°C to 150°C	–1.5	±0.8	1.5	%
		I _P = I _{PR(max)} ; T _A = –40°C to 25°C	–5.5	±4	5.5	%
Offset Voltage	V _{OE}	I _P = 0 A; T _A = 25°C to 150°C	–10	±4	10	mV
		I _P = 0 A; T _A = –40°C to 25°C	–30	±5	30	mV
LIFETIME DRIFT CHARACTERISTICS						
Sensitivity Error Lifetime Drift	E _{sens_drift}		–3	±1	3	%
Total Output Error Lifetime Drift	E _{tot_drift}		–3	±1	3	%

[1] Typical values with \pm are 3 sigma values

[2] Percentage of I_P , with $I_P = I_{PR(max)}$.

[3] A single part will not have both the maximum/minimum sensitivity error and maximum/minimum offset voltage, as that would violate the maximum/minimum total output error specification. Also, 3 sigma distribution values are combined by taking the square root of the sum of the squares. See Application Information section.

xLLCTR-20AB PERFORMANCE CHARACTERISTICS: T_A Range L, valid at $T_A = -40^\circ\text{C}$ to 150°C , $V_{CC} = 3.3\text{ V}$, unless otherwise specified

Characteristic	Symbol	Test Conditions	Min.	Typ. [1]	Max.	Unit
NOMINAL PERFORMANCE						
Current Sensing Range	I _{PR}		−20	−	20	A
Sensitivity	Sens	I _{PR(min)} < I _P < I _{PR(max)}	−	66	−	mV/A
Zero Current Output Voltage	V _{IOUT(Q)}	Bidirectional; I _P = 0 A	−	V _{CC} × 0.5	−	V
ACCURACY PERFORMANCE						
Total Output Error [2]	E _{TOT}	I _P = I _{PR(max)} ; T _A = 25°C to 150°C	−2	±0.8	2	%
		I _P = I _{PR(max)} ; T _A = −40°C to 25°C	−6	±4	6	%
TOTAL OUTPUT ERROR COMPONENTS [3] E _{TOT} = E _{SENS} + 100 x V _{OE} /(Sens x I _P)						
Sensitivity Error	E _{sens}	I _P = I _{PR(max)} ; T _A = 25°C to 150°C	−1.5	±0.8	1.5	%
		I _P = I _{PR(max)} ; T _A = −40°C to 25°C	−5.5	±4	5.5	%
Offset Voltage	V _{OE}	I _P = 0 A; T _A = 25°C to 150°C	−10	±4	10	mV
		I _P = 0 A; T _A = −40°C to 25°C	−30	±5	30	mV
LIFETIME DRIFT CHARACTERISTICS						
Sensitivity Error Lifetime Drift	E _{sens_drift}		−3	±1	3	%
Total Output Error Lifetime Drift	E _{tot_drift}		−3	±1	3	%

[1] Typical values with \pm are 3 sigma values

[2] Percentage of I_P , with $I_P = I_{PR(max)}$.

[3] A single part will not have both the maximum/minimum sensitivity error and maximum/minimum offset voltage, as that would violate the maximum/minimum total output error specification. Also, 3 sigma distribution values are combined by taking the square root of the sum of the squares. See Application Information section.

xLLCTR-20AB-H PERFORMANCE CHARACTERISTICS: T_A Range L, valid at $T_A = -40^\circ\text{C}$ to 150°C , $V_{CC} = 3.3\text{ V}$, unless otherwise specified

Characteristic	Symbol	Test Conditions	Min.	Typ. [1]	Max.	Unit
NOMINAL PERFORMANCE						
Current Sensing Range	I _{PR}		−20	−	20	A
Sensitivity	Sens	I _{PR(min)} < I _P < I _{PR(max)}	−	66	−	mV/A
Zero Current Output Voltage	V _{IOUT(Q)}	Bidirectional; I _P = 0 A	−	V _{CC} × 0.5	−	V
ACCURACY PERFORMANCE						
Total Output Error [2]	E _{TOT}	I _P = I _{PR(max)} ; T _A = 25°C to 150°C	−2	±0.7	2	%
		I _P = I _{PR(max)} ; T _A = −40°C to 25°C	−2	±1.5	2	%
TOTAL OUTPUT ERROR COMPONENTS [3] E _{TOT} = E _{SENS} + 100 x V _{OE} /(Sens x I _P)						
Sensitivity Error	E _{sens}	I _P = I _{PR(max)} ; T _A = 25°C to 150°C	−1.5	±0.7	1.5	%
		I _P = I _{PR(max)} ; T _A = −40°C to 25°C	−1.5	±1	1.5	%
Offset Voltage	V _{OE}	I _P = 0 A; T _A = 25°C to 150°C	−10	±3	10	mV
		I _P = 0 A; T _A = −40°C to 25°C	−10	±6	10	mV
LIFETIME DRIFT CHARACTERISTICS						
Sensitivity Error Lifetime Drift	E _{sens_drift}		−3	±1	3	%
Total Output Error Lifetime Drift	E _{tot_drift}		−3	±1	3	%

[1] Typical values with \pm are 3 sigma values

[2] Percentage of I_P , with $I_P = I_{PR(max)}$.

[3] A single part will not have both the maximum/minimum sensitivity error and maximum/minimum offset voltage, as that would violate the maximum/minimum total output error specification. Also, 3 sigma distribution values are combined by taking the square root of the sum of the squares. See Application Information section.

xLLCTR-30AB PERFORMANCE CHARACTERISTICS: T_A Range L, valid at $T_A = -40^\circ\text{C}$ to 150°C , $V_{CC} = 3.3\text{ V}$, unless otherwise specified

Characteristic	Symbol	Test Conditions	Min.	Typ. [1]	Max.	Unit
NOMINAL PERFORMANCE						
Current Sensing Range	I _{PR}		−30	−	30	A
Sensitivity	Sens	I _{PR(min)} < I _P < I _{PR(max)}	−	44	−	mV/A
Zero Current Output Voltage	V _{IOUT(Q)}	Bidirectional; I _P = 0 A	−	V _{CC} × 0.5	−	V
ACCURACY PERFORMANCE						
Total Output Error [2]	E _{TOT}	I _P = I _{PR(max)} ; T _A = 25°C to 150°C	−2	±0.7	2	%
		I _P = I _{PR(max)} ; T _A = −40°C to 25°C	−6	±4	6	%
TOTAL OUTPUT ERROR COMPONENTS [3] E _{TOT} = E _{SENS} + 100 x V _{OE} /(Sens x I _P)						
Sensitivity Error	E _{sens}	I _P = I _{PR(max)} ; T _A = 25°C to 150°C	−1.5	±0.7	1.5	%
		I _P = I _{PR(max)} ; T _A = −40°C to 25°C	−5.5	±4	5.5	%
Offset Voltage	V _{OE}	I _P = 0 A; T _A = 25°C to 150°C	−10	±3	10	mV
		I _P = 0 A; T _A = −40°C to 25°C	−30	±5	30	mV
LIFETIME DRIFT CHARACTERISTICS						
Sensitivity Error Lifetime Drift	E _{sens_drift}		−3	±1	3	%
Total Output Error Lifetime Drift	E _{tot_drift}		−3	±1	3	%

[1] Typical values with \pm are 3 sigma values

[2] Percentage of I_P , with $I_P = I_{PR(max)}$.

[3] A single part will not have both the maximum/minimum sensitivity error and maximum/minimum offset voltage, as that would violate the maximum/minimum total output error specification. Also, 3 sigma distribution values are combined by taking the square root of the sum of the squares. See Application Information section.

xLLCTR-30AB-H PERFORMANCE CHARACTERISTICS: T_A Range L, valid at $T_A = -40^\circ\text{C}$ to 150°C , $V_{CC} = 3.3\text{ V}$, unless otherwise specified

Characteristic	Symbol	Test Conditions	Min.	Typ. [1]	Max.	Unit
NOMINAL PERFORMANCE						
Current Sensing Range	I _{PR}		−30	−	30	A
Sensitivity	Sens	I _{PR(min)} < I _P < I _{PR(max)}	−	44	−	mV/A
Zero Current Output Voltage	V _{IOUT(Q)}	Bidirectional; I _P = 0 A	−	V _{CC} × 0.5	−	V
ACCURACY PERFORMANCE						
Total Output Error [2]	E _{TOT}	I _P = I _{PR(max)} ; T _A = 25°C to 150°C	−2	±0.7	2	%
		I _P = I _{PR(max)} ; T _A = −40°C to 25°C	−2	±1.5	2	%
TOTAL OUTPUT ERROR COMPONENTS [3] E _{TOT} = E _{SENS} + 100 x V _{OE} /(Sens x I _P)						
Sensitivity Error	E _{sens}	I _P = I _{PR(max)} ; T _A = 25°C to 150°C	−1.5	±0.7	1.5	%
		I _P = I _{PR(max)} ; T _A = −40°C to 25°C	−1.5	±1	1.5	%
Offset Voltage	V _{OE}	I _P = 0 A; T _A = 25°C to 150°C	−10	±3	10	mV
		I _P = 0 A; T _A = −40°C to 25°C	−10	±6	10	mV
LIFETIME DRIFT CHARACTERISTICS						
Sensitivity Error Lifetime Drift	E _{sens_drift}		−3	±1	3	%
Total Output Error Lifetime Drift	E _{tot_drift}		−3	±1	3	%

[1] Typical values with \pm are 3 sigma values

[2] Percentage of I_P , with $I_P = I_{PR(max)}$.

[3] A single part will not have both the maximum/minimum sensitivity error and maximum/minimum offset voltage, as that would violate the maximum/minimum total output error specification. Also, 3 sigma distribution values are combined by taking the square root of the sum of the squares. See Application Information section.

xLLCTR-30AU PERFORMANCE CHARACTERISTICS: T_A Range L, valid at $T_A = -40^\circ\text{C}$ to 150°C , $V_{CC} = 3.3\text{ V}$, unless otherwise specified

Characteristic	Symbol	Test Conditions	Min.	Typ. [1]	Max.	Unit
NOMINAL PERFORMANCE						
Current Sensing Range	I _{PR}		0	–	30	A
Sensitivity	Sens	I _{PR(min)} < I _P < I _{PR(max)}	–	88	–	mV/A
Zero Current Output Voltage	V _{IOUT(Q)}	Unidirectional; I _P = 0 A	–	V _{CC} × 0.1	–	V
ACCURACY PERFORMANCE						
Total Output Error [2]	E _{TOT}	I _P = I _{PR(max)} ; T _A = 25°C to 150°C	–2	±0.8	2	%
		I _P = I _{PR(max)} ; T _A = –40°C to 25°C	–6	±4	6	%
TOTAL OUTPUT ERROR COMPONENTS [3] E _{TOT} = E _{SENS} + 100 x V _{OE} /(Sens x I _P)						
Sensitivity Error	E _{sens}	I _P = I _{PR(max)} ; T _A = 25°C to 150°C	–1.5	±0.8	1.5	%
		I _P = I _{PR(max)} ; T _A = –40°C to 25°C	–5.5	±4	5.5	%
Offset Voltage	V _{OE}	I _P = 0 A; T _A = 25°C to 150°C	–10	±4	10	mV
		I _P = 0 A; T _A = –40°C to 25°C	–30	±5	30	mV
LIFETIME DRIFT CHARACTERISTICS						
Sensitivity Error Lifetime Drift	E _{sens_drift}		–3	±1	3	%
Total Output Error Lifetime Drift	E _{tot_drift}		–3	±1	3	%

[1] Typical values with \pm are 3 sigma values

[2] Percentage of I_P , with $I_P = I_{PR(\max)}$.

[3] A single part will not have both the maximum/minimum sensitivity error and maximum/minimum offset voltage, as that would violate the maximum/minimum total output error specification. Also, 3 sigma distribution values are combined by taking the square root of the sum of the squares. See Application Information section.

xLLCTR-40AB PERFORMANCE CHARACTERISTICS: T_A Range L, valid at $T_A = -40^\circ\text{C}$ to 150°C , $V_{CC} = 3.3\text{ V}$, unless otherwise specified

Characteristic	Symbol	Test Conditions	Min.	Typ. [1]	Max.	Unit
NOMINAL PERFORMANCE						
Current Sensing Range	I _{PR}		−40	−	40	A
Sensitivity	Sens	I _{PR(min)} < I _P < I _{PR(max)}	−	33	−	mV/A
Zero Current Output Voltage	V _{IOUT(Q)}	Bidirectional; I _P = 0 A	−	V _{CC} × 0.5	−	V
ACCURACY PERFORMANCE						
Total Output Error [2]	E _{TOT}	I _P = I _{PR(max)} ; T _A = 25°C to 150°C	−2	±1	2	%
		I _P = I _{PR(max)} ; T _A = −40°C to 25°C	−6	±4	6	%
TOTAL OUTPUT ERROR COMPONENTS [3] E _{TOT} = E _{SENS} + 100 x V _{OE} /(Sens x I _P)						
Sensitivity Error	E _{sens}	I _P = I _{PR(max)} ; T _A = 25°C to 150°C	−1.5	±1	1.5	%
		I _P = I _{PR(max)} ; T _A = −40°C to 25°C	−5.5	±4	5.5	%
Offset Voltage	V _{OE}	I _P = 0 A; T _A = 25°C to 150°C	−10	±3	10	mV
		I _P = 0 A; T _A = −40°C to 25°C	−30	±5	30	mV
LIFETIME DRIFT CHARACTERISTICS						
Sensitivity Error Lifetime Drift	E _{sens_drift}		−3	±1	3	%
Total Output Error Lifetime Drift	E _{tot_drift}		−3	±1	3	%

[1] Typical values with \pm are 3 sigma values

[2] Percentage of I_P , with $I_P = I_{PR(\max)}$.

[3] A single part will not have both the maximum/minimum sensitivity error and maximum/minimum offset voltage, as that would violate the maximum/minimum total output error specification. Also, 3 sigma distribution values are combined by taking the square root of the sum of the squares. See Application Information section.

xLLCTR-50AB PERFORMANCE CHARACTERISTICS: T_A Range L, valid at $T_A = -40^\circ\text{C}$ to 150°C , $V_{CC} = 3.3\text{ V}$, unless otherwise specified

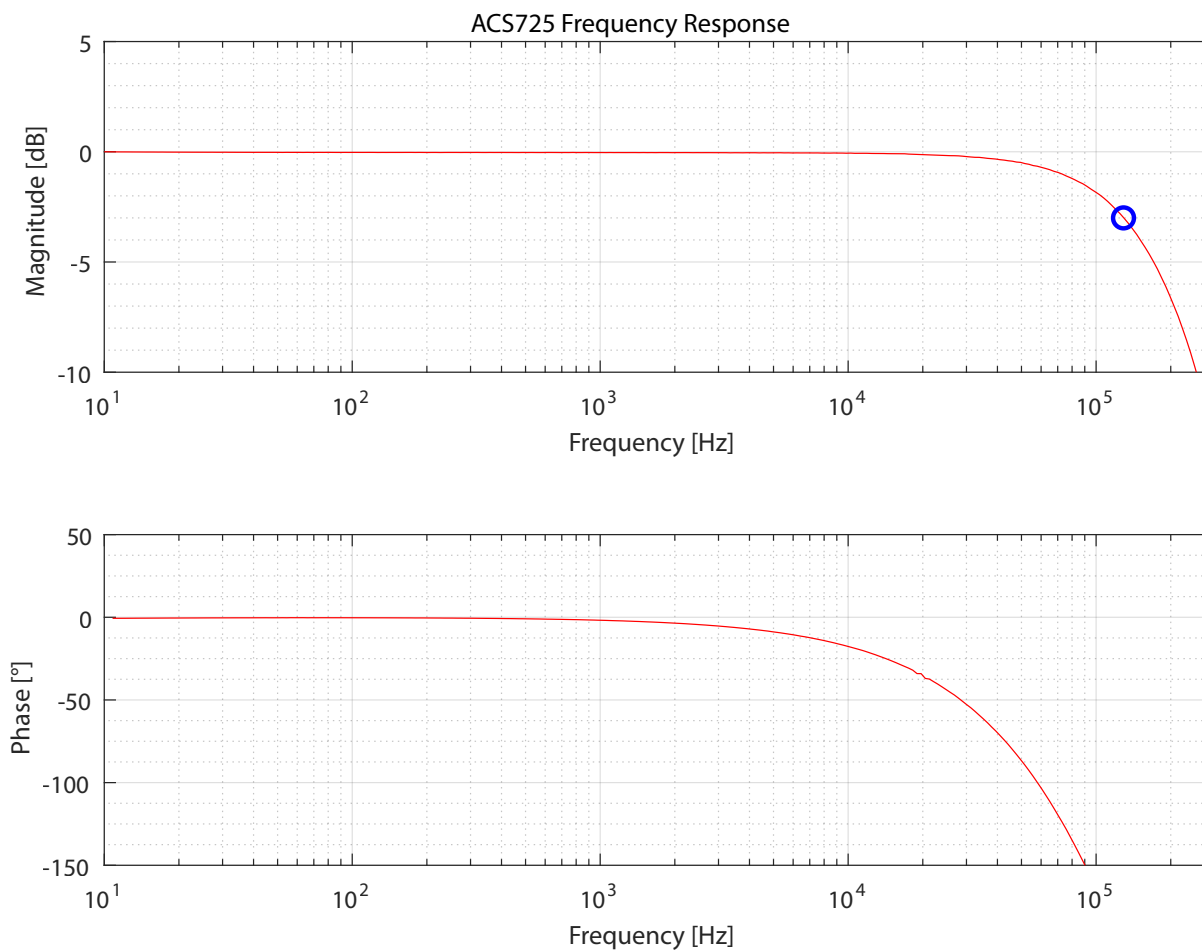
Characteristic	Symbol	Test Conditions	Min.	Typ. [1]	Max.	Unit
NOMINAL PERFORMANCE						
Current Sensing Range	I _{PR}		−50	−	50	A
Sensitivity	Sens	I _{PR(min)} < I _P < I _{PR(max)}	−	26.4	−	mV/A
Zero Current Output Voltage	V _{IOUT(Q)}	Bidirectional; I _P = 0 A	−	V _{CC} × 0.5	−	V
ACCURACY PERFORMANCE						
Total Output Error [2]	E _{TOT}	I _P = I _{PR(max)} ; T _A = 25°C to 150°C	−2	±1	2	%
		I _P = I _{PR(max)} ; T _A = −40°C to 25°C	−6	±4	6	%
TOTAL OUTPUT ERROR COMPONENTS [3] E _{TOT} = E _{SENS} + 100 x V _{OE} /(Sens x I _P)						
Sensitivity Error	E _{sens}	I _P = I _{PR(max)} ; T _A = 25°C to 150°C	−1.5	±1	1.5	%
		I _P = I _{PR(max)} ; T _A = −40°C to 25°C	−5.5	±4	5.5	%
Offset Voltage	V _{OE}	I _P = 0 A; T _A = 25°C to 150°C	−10	±3	10	mV
		I _P = 0 A; T _A = −40°C to 25°C	−30	±5	30	mV
LIFETIME DRIFT CHARACTERISTICS						
Sensitivity Error Lifetime Drift	E _{sens_drift}		−3	±1	3	%
Total Output Error Lifetime Drift	E _{tot_drift}		−3	±1	3	%

[1] Typical values with \pm are 3 sigma values

[2] Percentage of I_P , with $I_P = I_{PR(\max)}$.

[3] A single part will not have both the maximum/minimum sensitivity error and maximum/minimum offset voltage, as that would violate the maximum/minimum total output error specification. Also, 3 sigma distribution values are combined by taking the square root of the sum of the squares. See Application Information section.

CHARACTERISTIC PERFORMANCE ACS725 TYPICAL FREQUENCY RESPONSE



APPLICATION INFORMATION

Estimating Total Error vs. Sensed Current

The Performance Characteristics tables give distribution (± 3 sigma) values for Total Error at $I_{PR(max)}$; however, one often wants to know what error to expect at a particular current. This can be estimated by using the distribution data for the components of Total Error, Sensitivity Error, and Offset Voltage. The ± 3 sigma value for Total Error (E_{TOT}) as a function of the sensed current (I_p) is estimated as:

$$E_{TOT}(I_p) = \sqrt{E_{SENS}^2 + \left(\frac{100 \times V_{OE}}{Sens \times I_p} \right)^2}$$

Here, E_{SENS} and V_{OE} are the ± 3 sigma values for those error terms. If there is an average sensitivity error or average offset voltage, then the average Total Error is estimated as:

$$E_{TOT_{AVG}}(I_p) = E_{SENS_{AVG}} + \frac{100 \times V_{OE_{AVG}}}{Sens \times I_p}$$

The resulting total error will be a sum of E_{TOT} and $E_{TOT_{AVG}}$. Using these equations and the 3 sigma distributions for Sensitivity Error and Offset Voltage, the Total Error vs. sensed current (I_p) is below for the ACS725LLCTR-20AB. As expected, as one goes towards zero current, the error in percent goes towards infinity due to division by zero.

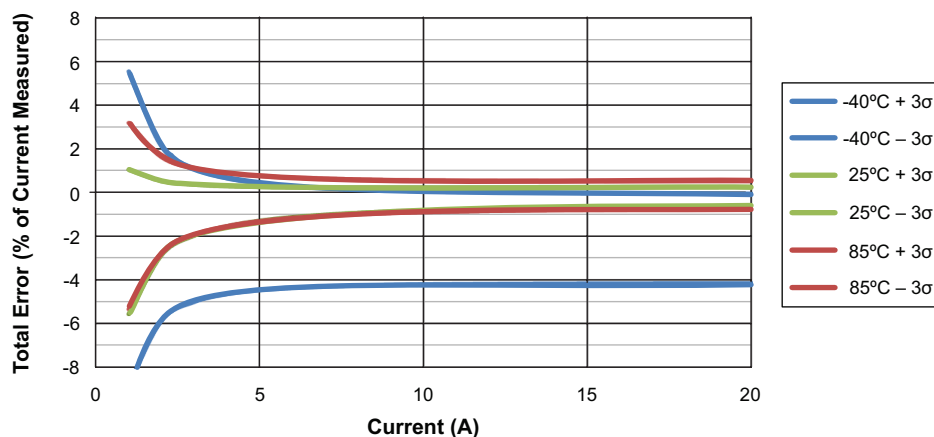


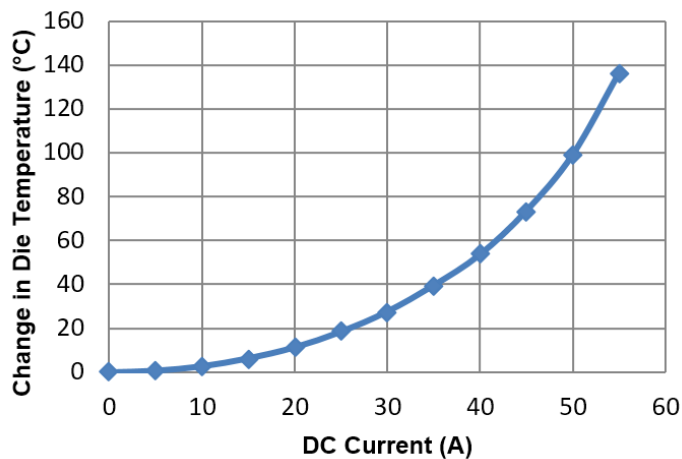
Figure 1: Predicted Total Error as a Function of the Sensed Current for the ACS725LLCTR-20AB

Thermal Rise vs. Primary Current

Self-heating due to the flow-off current should be considered during the design of any current sensing system. The sensor, printed circuit board (PCB), and contacts to the PCB will generate heat as current moves through the system.

The thermal response is highly dependent on PCB layout, copper thickness, cooling techniques, and the profile of the injected current. The current profile includes peak current, current “on-time”, and duty cycle. While the data presented in this section was collected with direct current (DC), these numbers may be used to approximate thermal response for both AC signals and current pulses.

The plot in Figure 2 shows the measured rise in steady-state die temperature of the ACS725 versus DC input current at an ambient temperature, T_A , of 25 °C. The thermal offset curves may be directly applied to other values of T_A .

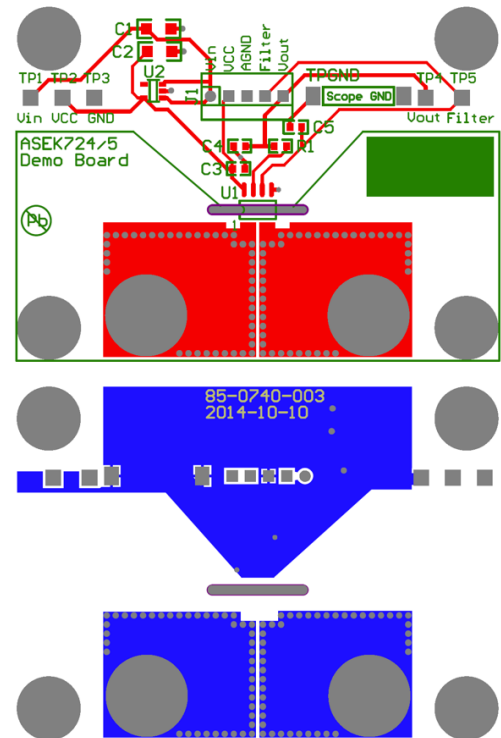


**Figure 2: Self Heating in the LA Package
Due to Current Flow**

The thermal capacity of the ACS725 should be verified by the end user in the application’s specific conditions. The maximum junction temperature, $T_{J(MAX)}$ (165°C), should not be exceeded. Further information on this application testing is available in the [DC and Transient Current Capability application note](#) on the Allegro website.

ASEK724/5 Evaluation Board Layout

Thermal data shown in Figure 2 was collected using the ASEK724/5 Evaluation Board (TED-85-0740-003). This board includes 1500 mm² of 2 oz. copper (0.0694 mm) connected to pins 1 and 2, and to pins 3 and 4, with thermal vias connecting the layers. Top and bottom layers of the PCB are shown below in Figure 3.



**Figure 3: Top and Bottom Layers
for ASEK724/5 Evaluation Board**

Gerber files for the ASEK724/5 evaluation board are available for download from our website. See the technical documents section of the [ACS725 device webpage](#).

DEFINITIONS OF ACCURACY CHARACTERISTICS

Sensitivity (Sens). The change in sensor IC output in response to a 1 A change through the primary conductor. The sensitivity is the product of the magnetic circuit sensitivity (G/A) (1 G = 0.1 mT) and the linear IC amplifier gain (mV/G). The linear IC amplifier gain is programmed at the factory to optimize the sensitivity (mV/A) for the full-scale current of the device.

Nonlinearity (E_{LIN}). The nonlinearity is a measure of how linear the output of the sensor IC is over the full current measurement range. The nonlinearity is calculated as:

$$E_{LIN} = \left\{ 1 - \left[\frac{V_{IOUT}(I_{PR(max)}) - V_{IOUT(Q)}}{2 \cdot V_{IOUT}(I_{PR(max)}/2) - V_{IOUT(Q)}} \right] \right\} \cdot 100(\%)$$

where $V_{IOUT}(I_{PR(max)})$ is the output of the sensor IC with the maximum measurement current flowing through it and $V_{IOUT}(I_{PR(max)}/2)$ is the output of the sensor IC with half of the maximum measurement current flowing through it.

Zero Current Output Voltage ($V_{IOUT(Q)}$). The output of the sensor when the primary current is zero. For a unipolar supply voltage, it nominally remains at $0.5 \times V_{CC}$ for a bidirectional device and $0.1 \times V_{CC}$ for a unidirectional device. For example, in the case of a bidirectional output device, $V_{CC} = 3.3$ V translates into $V_{IOUT(Q)} = 1.65$ V. Variation in $V_{IOUT(Q)}$ can be attributed to the resolution of the Allegro linear IC quiescent voltage trim and thermal drift.

Offset Voltage (V_{OE}). The deviation of the device output from its ideal quiescent value of $0.5 \times V_{CC}$ (bidirectional) or $0.1 \times V_{CC}$ (unidirectional) due to nonmagnetic causes. To convert this voltage to amperes, divide by the device sensitivity, Sens.

Total Output Error (E_{TOT}). The difference between the current measurement from the sensor IC and the actual current (I_P), relative to the actual current. This is equivalent to the difference between the ideal output voltage and the actual output voltage, divided by the ideal sensitivity, relative to the current flowing through the primary conduction path:

$$E_{TOT}(I_P) = \frac{V_{IOUT_ideal}(I_P) - V_{IOUT}(I_P)}{Sens_{ideal}(I_P) \cdot I_P} \cdot 100(\%)$$

The Total Output Error incorporates all sources of error and is a function of I_P . At relatively high currents, E_{TOT} will be mostly due to sensitivity error, and at relatively low currents, E_{TOT} will be mostly due to Offset Voltage (V_{OE}). In fact, at $I_P = 0$, E_{TOT} approaches infinity due to the offset. This is illustrated in Figure 4 and Figure 5. Figure 4 shows a distribution of output voltages versus I_P at 25°C and across temperature. Figure 5 shows the corresponding E_{TOT} versus I_P .

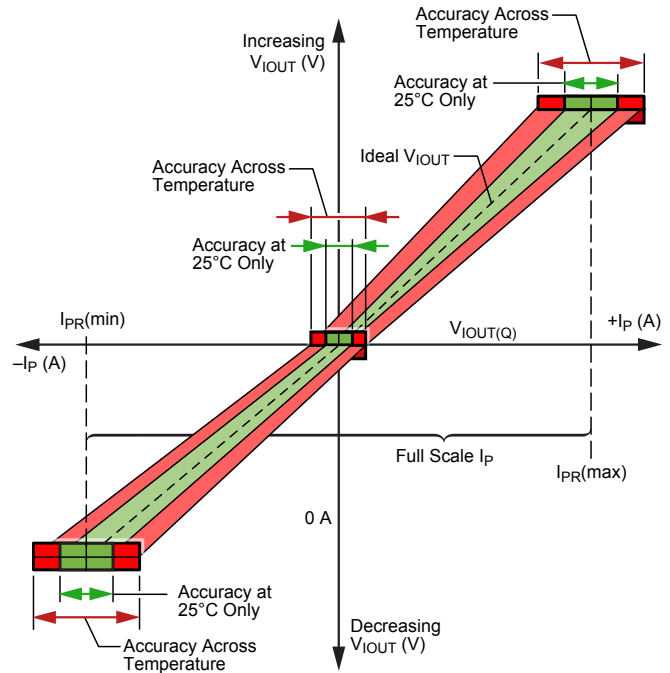


Figure 4: Output Voltage versus Sensed Current

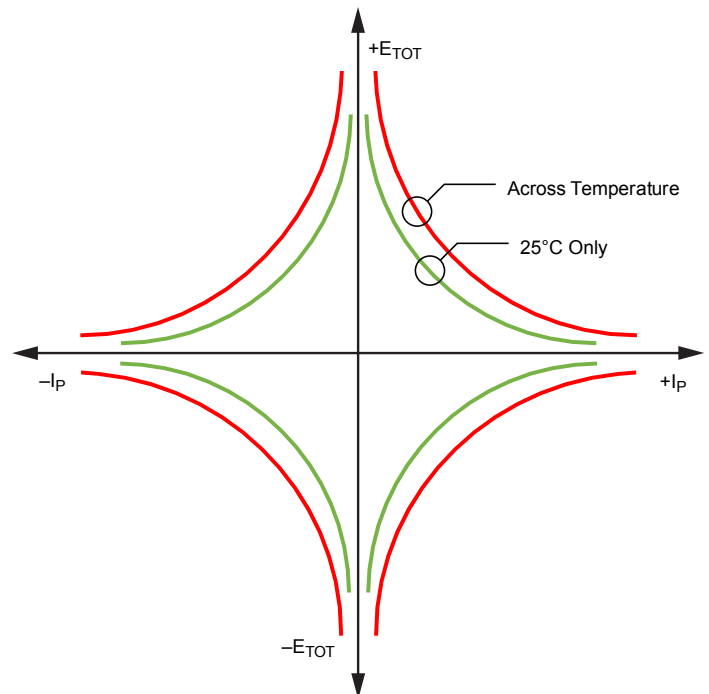


Figure 5: Total Output Error versus Sensed Current

Sensitivity Ratiometry Coefficient (SENS_RAT_COEF). The coefficient defining how the sensitivity scales with V_{CC} . The ideal coefficient is 1, meaning the sensitivity scales proportionally with V_{CC} . A 10% increase in V_{CC} results in a 10% increase in sensitivity. A coefficient of 1.1 means that the sensitivity increases by 10% more than the ideal proportionality case. This means that a 10% increase in V_{CC} results in an 11% increase in sensitivity. This relationship is described by the following equation:

$$Sens(V_{CC}) = Sens(3.3 V) \left[1 + \frac{(V_{CC} - 3.3 V) \cdot SENS_RAT_COEF}{3.3 V} \right]$$

This can be rearranged to define the sensitivity ratiometry coefficient as:

$$SENS_RAT_COEF = \left[\frac{Sens(V_{CC})}{Sens(3.3 V)} - 1 \right] \cdot \frac{3.3 V}{(V_{CC} - 3.3 V)}$$

Zero Current Output Ratiometry Coefficient (QVO_RAT_COEF). The coefficient defining how the zero current output voltage scales with V_{CC} . The ideal coefficient is 1, meaning the output voltage scales proportionally with V_{CC} , always being equal to $V_{CC}/2$. A coefficient of 1.1 means that the zero current output voltage increases by 10% more than the ideal proportionality case. This means that a 10% increase in V_{CC} results in an 11% increase in the zero current output voltage. This relationship is described by the following equation:

$$VIOUTQ(V_{CC}) = VIOUTQ(3.3 V) \left[1 + \frac{(V_{CC} - 3.3 V) \cdot QVO_RAT_COEF}{3.3 V} \right]$$

This can be rearranged to define the zero current output ratiometry coefficient as:

$$QVO_RAT_COEF = \left[\frac{VIOUTQ(V_{CC})}{VIOUTQ(3.3 V)} - 1 \right] \cdot \frac{3.3 V}{(V_{CC} - 3.3 V)}$$

DEFINITIONS OF DYNAMIC RESPONSE CHARACTERISTICS

Power-On Time (t_{PO}). When the supply is ramped to its operating voltage, the device requires a finite time to power its internal components before responding to an input magnetic field. Power-On Time, t_{PO} , is defined as the time it takes for the output voltage to settle within $\pm 10\%$ of its steady state value under an applied magnetic field, after the power supply has reached its minimum specified operating voltage, $V_{CC(min)}$, as shown in the chart at right.

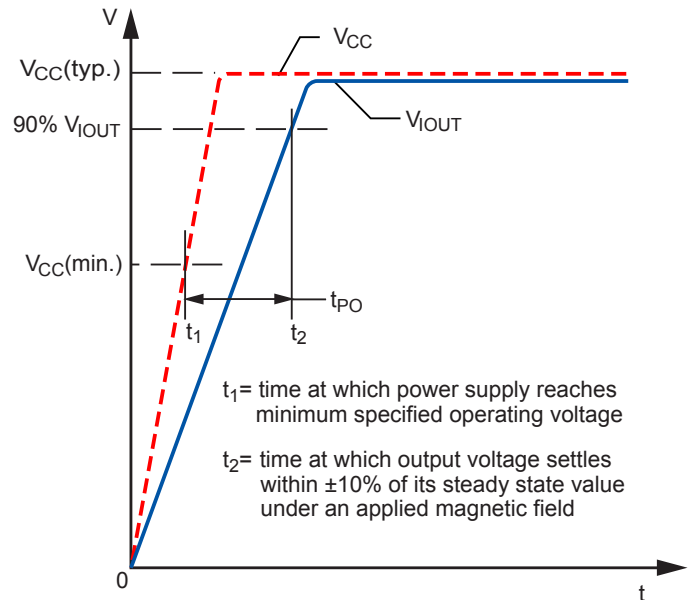


Figure 6: Power-On Time (t_{PO})

Rise Time (t_r). The time interval between a) when the sensor IC reaches 10% of its full scale value, and b) when it reaches 90% of its full scale value. The rise time to a step response is used to derive the bandwidth of the current sensor IC, in which $f(-3 \text{ dB}) = 0.35/t_r$. Both t_r and $t_{RESPONSE}$ are detrimentally affected by eddy current losses observed in the conductive IC ground plane.

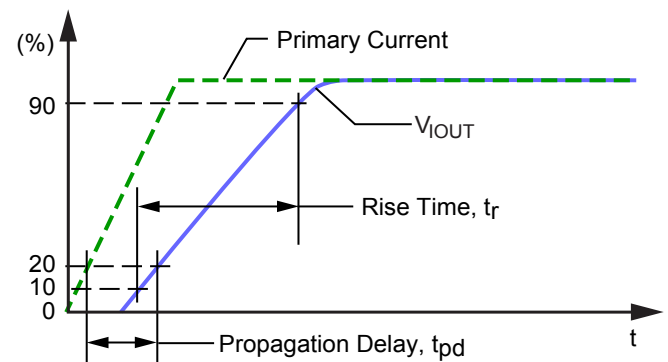


Figure 7: Rise Time (t_r) and Propagation Delay (t_{pd})

Response Time ($t_{RESPONSE}$). The time interval between a) when the primary current signal reaches 90% of its final value, and b) when the device reaches 90% of its output corresponding to the applied current.

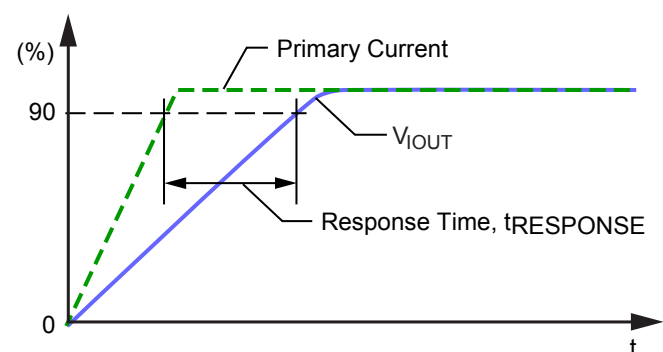


Figure 8: Response Time ($t_{RESPONSE}$)

PACKAGE OUTLINE DRAWING

For Reference Only – Not for Tooling Use

(Reference MS-012AA)
Dimensions in millimeters – NOT TO SCALE
Dimensions exclusive of mold flash, gate burrs, and dambar protrusions
Exact case and lead configuration at supplier discretion within limits shown

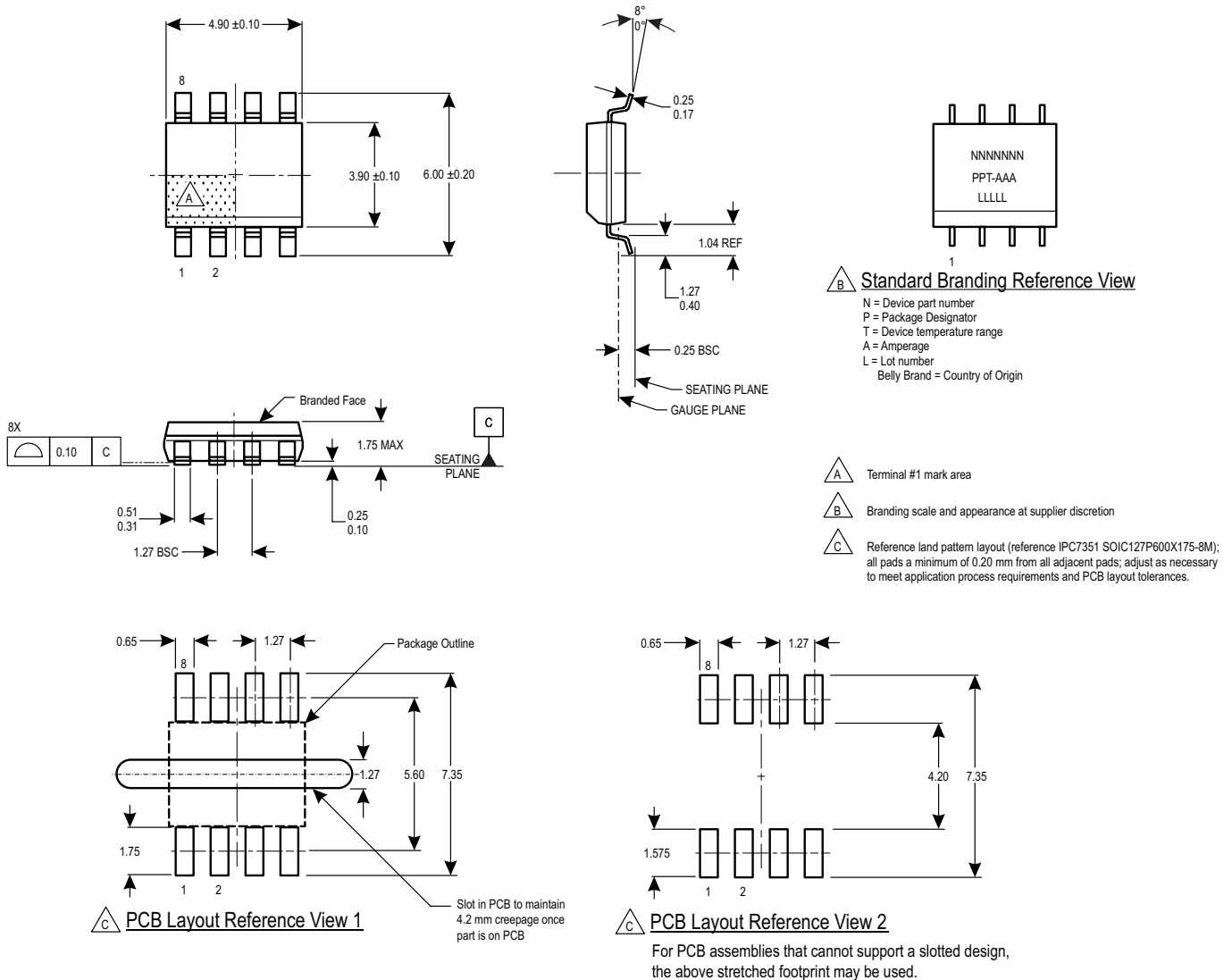


Figure 9: Package LC, 8-Pin SOICN

Revision History

Number	Change	Pages	Responsible	Date
–	Initial Release	All	A. Latham	January 19, 2015
1	Added ACS725LLCTR-20AU-T to Selection Guide and Performance Characteristics charts, and corrected Sensitivity Error; added xLLCTR-20AU Characteristic Performance charts.	2, 6-8, 10	A. Latham	September 28, 2015
2	Added ACS725LLCTR-30AU-T to Selection Guide and Performance Characteristics charts.	2, 8	A. Latham	December 11, 2015
3	Added ACS725LLCTR-50AB-T to Selection Guide and Performance Characteristics charts.	2, 9	W. Bussing	March 17, 2017
4	Added AEC-Q100 qualified status	1	W. Bussing	June 28, 2017
5	Added ACS725LLCTR-05AB-T and ACS725LLCTR-10AB-T to Selection Guide and Performance Characteristics charts.	2, 5	M. McNally	November 15, 2017
6	Updated Clearance and Creepage rating values	3	W. Bussing	January 10, 2018
7	Added Dielectric Surge Strength Test Voltage characteristic	2	W. Bussing	January 23, 2018
	Added Common Mode Field Rejection Ratio characteristic	5		
8	Updated PCB Layout References in Package Outline Drawing	20	W. Bussing	March 19, 2018
9	Added Typical Frequency Response plots	16	W. Bussing	June 22, 2018
10	Added "Thermal Rise vs. Primary Current" and "ASEK724/5 Evaluation Board Layout" to the Applications Information section	18	W. Bussing	July 3, 2018
11	Added ACS725LLCTR-30AB-T-H to Selection Guide and Performance Characteristic charts.	2, 9, 15	M. McNally	July 30, 2018
12	Updated certificate numbers	1	V. Mach	December 13, 2018
13	Updated TUV certificate mark	1	M. McNally	June 3, 2019
14	Added ACS725LLC-20AB-T-H to Selection Guide and Performance Characteristics charts	2, 8	W. Bussing	December 20, 2019
	Removed Characteristic Plots	12-17		
15	Updated Functional Block Diagram	4	K. Hampton	February 1, 2021
16	Updated Comparative Tracking Index to Isolation Characteristics table	3	E. Shorman	July 7, 2021

Copyright 2021, Allegro MicroSystems.

Allegro MicroSystems reserves the right to make, from time to time, such departures from the detail specifications as may be required to permit improvements in the performance, reliability, or manufacturability of its products. Before placing an order, the user is cautioned to verify that the information being relied upon is current.

Allegro's products are not to be used in any devices or systems, including but not limited to life support devices or systems, in which a failure of Allegro's product can reasonably be expected to cause bodily harm.

The information included herein is believed to be accurate and reliable. However, Allegro MicroSystems assumes no responsibility for its use; nor for any infringement of patents or other rights of third parties which may result from its use.

Copies of this document are considered uncontrolled documents.

For the latest version of this document, visit our website:

www.allegromicro.com