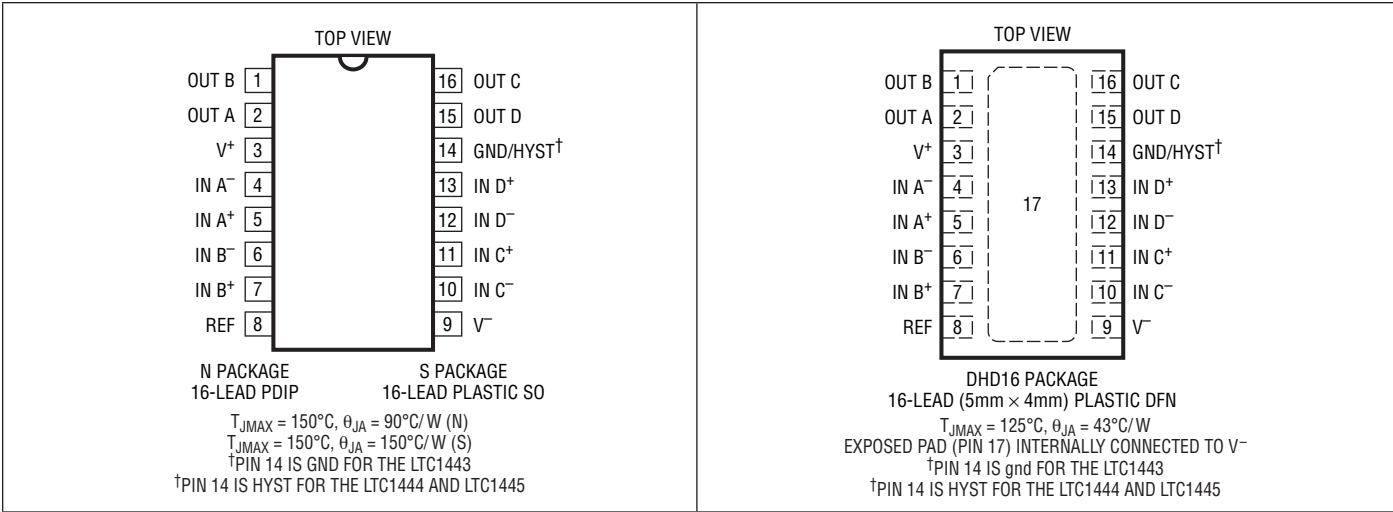


# LTC1443/LTC1444/LTC1445

## ABSOLUTE MAXIMUM RATINGS (Note 1)

Voltage:	OUT Short-Circuit Duration ( $V^+ \leq 5.5V$ )	Continuous
$V^+$ to $V^-$ , $V^+$ to GND, GND to $V^-$	Power Dissipation	500mW
$IN^+$ , $IN^-$ , HYST	Operating Temperature Range	
REF	Commercial	0°C to 70°C
OUT (LTC1443)	Industrial	-40°C to 85°C
OUT	Storage Temperature Range	
(LTC1444/LTC1445)	PDIP, SO	-65°C to 150°C
Current:	DFN	-65°C to 125°C
$IN^+$ , $IN^-$ , HYST	Lead Temperature Range (Soldering, 10 sec)	
REF	PDIP, SO	300°C
OUT		

## PIN CONFIGURATION



## ORDER INFORMATION

LEAD FREE FINISH	TAPE AND REEL	PART MARKING*	PACKAGE DESCRIPTION	TEMPERATURE RANGE
LTC1443CN#PBF	LTC1443CN#TRPBF	LTC1443CN	16-Lead PDIP	0°C to 70°C
LTC1443CS#PBF	LTC1443CS#TRPBF	LTC1443CS	16-Lead Plastic SO	-40°C to 85°C
LTC1443IN#PBF	LTC1443IN#TRPBF	LTC1443IN	16-Lead PDIP	0°C to 70°C
LTC1443IS#PBF	LTC1443IS#TRPBF	LTC1443IS	16-Lead Plastic SO	-40°C to 85°C
LTC1444CN#PBF	LTC1444CN#TRPBF	LTC1444CN	16-Lead PDIP	0°C to 70°C
LTC1444CS#PBF	LTC1444CS#TRPBF	LTC1444CS	16-Lead Plastic SO	-40°C to 85°C
LTC1444IN#PBF	LTC1444IN#TRPBF	LTC1444IN	16-Lead PDIP	0°C to 70°C
LTC1444IS#PBF	LTC1444IS#TRPBF	LTC1444IS	16-Lead Plastic SO	-40°C to 85°C
LTC1445CN#PBF	LTC1445CN#TRPBF	LTC1445CN	16-Lead PDIP	0°C to 70°C
LTC1445CS#PBF	LTC1445CS#TRPBF	LTC1445CS	16-Lead Plastic SO	-40°C to 85°C
LTC1445IN#PBF	LTC1445IN#TRPBF	LTC1445IN	16-Lead PDIP	0°C to 70°C
LTC1445IS#PBF	LTC1445IS#TRPBF	LTC1445IS	16-Lead Plastic SO	-40°C to 85°C
LTC1443CDHD#PBF	LTC1443CDHD#TRPBF	1443	16-Lead (5mm × 4mm) Plastic DFN	0°C to 70°C
LTC1443IDHD#PBF	LTC1443IDHD#TRPBF	1443	16-Lead (5mm × 4mm) Plastic DFN	-40°C to 85°C
LTC1444CDHD#PBF	LTC1444CDHD#TRPBF	1444	16-Lead (5mm × 4mm) Plastic DFN	0°C to 70°C
LTC1444IDHD#PBF	LTC1444IDHD#TRPBF	1444	16-Lead (5mm × 4mm) Plastic DFN	-40°C to 85°C
LTC1445CDHD#PBF	LTC1445CDHD#TRPBF	1445	16-Lead (5mm × 4mm) Plastic DFN	0°C to 70°C
LTC1445IDHD#PBF	LTC1445IDHD#TRPBF	1445	16-Lead (5mm × 4mm) Plastic DFN	-40°C to 85°C
LEAD BASED FINISH	TAPE AND REEL	PART MARKING*	PACKAGE DESCRIPTION	TEMPERATURE RANGE
LTC1443CN	LTC1443CN#TR	LTC1443CN	16-Lead PDIP	0°C to 70°C
LTC1443CS	LTC1443CS#TR	LTC1443CS	16-Lead Plastic SO	-40°C to 85°C
LTC1443IN	LTC1443IN#TR	LTC1443IN	16-Lead PDIP	0°C to 70°C
LTC1443IS	LTC1443IS#TR	LTC1443IS	16-Lead Plastic SO	-40°C to 85°C
LTC1444CN	LTC1444CN#TR	LTC1444CN	16-Lead PDIP	0°C to 70°C
LTC1444CS	LTC1444CS#TR	LTC1444CS	16-Lead Plastic SO	-40°C to 85°C
LTC1444IN	LTC1444IN#TR	LTC1444IN	16-Lead PDIP	0°C to 70°C
LTC1444IS	LTC1444IS#TR	LTC1444IS	16-Lead Plastic SO	-40°C to 85°C
LTC1445CN	LTC1445CN#TR	LTC1445CN	16-Lead PDIP	0°C to 70°C
LTC1445CS	LTC1445CS#TR	LTC1445CS	16-Lead Plastic SO	-40°C to 85°C
LTC1445IN	LTC1445IN#TR	LTC1445IN	16-Lead PDIP	0°C to 70°C
LTC1445IS	LTC1445IS#TR	LTC1445IS	16-Lead Plastic SO	-40°C to 85°C
LTC1443CDHD	LTC1443CDHD#TR	1443	16-Lead (5mm × 4mm) Plastic DFN	0°C to 70°C
LTC1443IDHD	LTC1443IDHD#TR	1443	16-Lead (5mm × 4mm) Plastic DFN	-40°C to 85°C
LTC1444CDHD	LTC1444CDHD#TR	1444	16-Lead (5mm × 4mm) Plastic DFN	0°C to 70°C
LTC1444IDHD	LTC1444IDHD#TR	1444	16-Lead (5mm × 4mm) Plastic DFN	-40°C to 85°C
LTC1445CDHD	LTC1445CDHD#TR	1445	16-Lead (5mm × 4mm) Plastic DFN	0°C to 70°C
LTC1445IDHD	LTC1445IDHD#TR	1445	16-Lead (5mm × 4mm) Plastic DFN	-40°C to 85°C

Consult LTC Marketing for parts specified with wider operating temperature ranges. \*The temperature grade is identified by a label on the shipping container.

For more information on lead free part marking, go to: <http://www.linear.com/leadfree/>

For more information on tape and reel specifications, go to: <http://www.linear.com/tapeandreel/>

# LTC1443/LTC1444/LTC1445

**ELECTRICAL CHARACTERISTICS** The ● denotes the specifications which apply over the full operating temperature range, otherwise specifications are at  $T_A = 25^\circ\text{C}$ .  $V^+ = 5\text{V}$ ,  $V^- = \text{GND} = 0\text{V}$ , unless otherwise noted.

SYMBOL	PARAMETER	CONDITIONS			MIN	TYP	MAX	UNITS
Power Supply								
V <sup>+</sup>	Supply Voltage Range			●	2.0		11.0	V
I <sub>CC</sub>	Supply Current	IN <sup>+</sup> = IN <sup>−</sup> = 80mV HYST = REF (LTC1444/LTC1445)		●		5.5	8.5	μA
Comparator								
V <sub>OS</sub>	Comparator Input Offset Voltage	V <sub>CM</sub> = 2.5V		●		±3.0	±10.0	mV
I <sub>IN</sub>	Input Leakage Current (IN <sup>+</sup> , IN <sup>−</sup> )	V <sub>IN</sub> <sup>+</sup> = V <sub>IN</sub> <sup>−</sup> = 2.5V		●		±0.01	±1.0	nA
	Input Leakage Current (HYST)	LTC1444/LTC1445		●		±0.02	±1.0	nA
V <sub>CM</sub>	Comparator Input Common Mode Range			●	V <sup>−</sup>		V <sup>+</sup> − 1.3V	V
CMRR	Common Mode Rejection Ratio	V <sup>−</sup> to (V <sup>+</sup> − 1.3V)				0.1	1.0	mV/V
PSRR	Power Supply Rejection Ratio	V <sup>+</sup> = 2V to 11V				0.1	1.0	mV/V
Noise	Voltage Noise	100Hz to 100kHz				20		μV <sub>RMS</sub>
V <sub>HYST</sub>	Hysteresis Input Voltage Range	LTC1444, LTC1445		●	REF − 50mV		REF	V
t <sub>PD</sub>	Propagation Delay	Overdrive = 10mV, C <sub>OUT</sub> = 100pF Overdrive = 100mV, C <sub>OUT</sub> = 100pF				12 4		μs μs
V <sub>OH</sub>	Output High Voltage	I <sub>O</sub> = −15mA; LTC1443/LTC1445		●	V <sup>+</sup> − 0.4V			V
V <sub>OL</sub>	Output Low Voltage	I <sub>O</sub> = 1.8mA; LTC1443 I <sub>O</sub> = 1.8mA; LTC1444/LTC1445		● ●			GND + 0.4V V <sup>−</sup> + 0.4V	V V
Reference								
V <sub>REF</sub>	Reference Voltage	No Load, LTC1443	C Temp Range	●	1.170	1.182	1.194	V
			I Temp Range	●	1.164		1.200	V
		No Load, LTC1444/ LTC1445	C Temp Range	●	1.209	1.221	1.233	V
			I Temp Range	●	1.203		1.239	V
I <sub>SOURCE</sub>	Reference Output Source Current	ΔV <sub>REF</sub> ≤ 1mV		●	100	200		μA
I <sub>SINK</sub>	Reference Output Sink Current	ΔV <sub>REF</sub> ≤ 2.5mV ΔV <sub>REF</sub> ≤ 5mV		●	10 10	15 15		μA μA
Noise	Voltage Noise	100Hz to 100kHz				100		μV <sub>RMS</sub>

The ● denotes the specifications which apply over the full operating temperature range, otherwise specifications are at  $T_A = 25^\circ\text{C}$ .  $V^+ = 3\text{V}$ ,  $V^- = \text{GND} = 0\text{V}$ , unless otherwise noted.

SYMBOL	PARAMETER	CONDITIONS	MIN	TYP	MAX	UNITS
<b>Power Supply</b>						
$V^+$	Supply Voltage Range	●	2.0		11.0	V
$I_{CC}$	Supply Current	$I_{IN}^+ = I_{IN}^- = 80\text{mV}$ , HYST = REF	●	5	8	$\mu\text{A}$
<b>Comparator</b>						
$V_{OS}$	Comparator Input Offset Voltage	$V_{CM} = 1.5\text{V}$	●	$\pm 3.0$	$\pm 10.0$	mV
$I_{IN}$	Input Leakage Current ( $I_{IN}^+$ , $I_{IN}^-$ )	$V_{IN}^+ = V_{IN}^- = 1.5\text{V}$	●	$\pm 0.01$	$\pm 1.0$	nA
	Input Leakage Current (HYST)	LTC1444/LTC1445	●	$\pm 0.02$	$\pm 1.0$	nA
$V_{CM}$	Comparator Input Common Mode Range	●	$V^-$		$V^+ - 1.3\text{V}$	V
CMRR	Common Mode Rejection Ratio	$V^-$ to $(V^+ - 1.3\text{V})$		0.1	1.0	mV/V
PSRR	Power Supply Rejection Ratio	$V^+ = 2\text{V}$ to $11\text{V}$		0.1	1.0	mV/V
Noise	Voltage Noise	100Hz to 100kHz		100		$\mu\text{V}_{RMS}$
$V_{HYST}$	Hysteresis Input Voltage Range	LTC1444, LTC1445	●	REF – 50mV	REF	V
$t_{PD}$	Propagation Delay	Overdrive = 10mV, $C_{OUT} = 100\text{pF}$ Overdrive = 100mV, $C_{OUT} = 100\text{pF}$		14 5		$\mu\text{s}$ $\mu\text{s}$
$V_{OH}$	Output High Voltage	$I_O = -10\text{mA}$ ; LTC1443/LTC1445	●	$V^+ - 0.4\text{V}$		V
$V_{OL}$	Output Low Voltage	$I_O = 0.8\text{mA}$ ; LTC1443 $I_O = 0.8\text{mA}$ ; LTC1444/LTC1445	● ●		GND + 0.4V $V^- + 0.4\text{V}$	V V

144345fd

# ELECTRICAL CHARACTERISTICS

The ● denotes the specifications which apply over the full operating temperature range, otherwise specifications are at  $T_A = 25^\circ\text{C}$ .  $V^+ = 3\text{V}$ ,  $V^- = \text{GND} = 0\text{V}$ , unless otherwise noted.

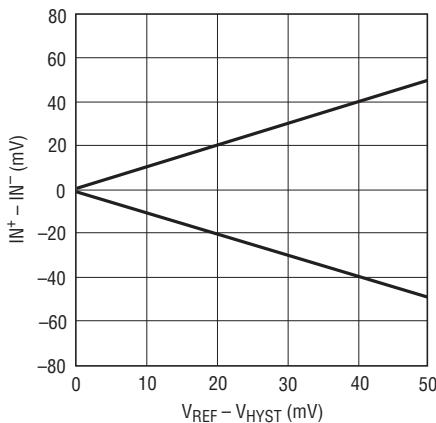
SYMBOL	PARAMETER	CONDITIONS			MIN	TYP	MAX	UNITS
Reference								
V <sub>REF</sub>	Reference Voltage	No Load, LTC1443	C Temp Range	●	1.170	1.182	1.194	V
			I Temp Range	●	1.164		1.200	V
		No Load, LTC1444/ LTC1445	C Temp Range	●	1.209	1.221	1.233	V
			I Temp Range	●	1.203		1.239	V
I <sub>SOURCE</sub>	Reference Output Source Current	ΔV <sub>REF</sub> ≤ 1mV			●	60	120	μA
I <sub>SINK</sub>	Reference Output Sink Current	ΔV <sub>REF</sub> ≤ 2.5mV				10	15	μA
		ΔV <sub>REF</sub> ≤ 5mV			●	10	15	μA
Noise	Noise Voltage	100Hz to 100kHz				100		μV <sub>RMS</sub>

**Note 1:** Stresses beyond those listed under Absolute Maximum Ratings may cause permanent damage to the device. Exposure to any Absolute

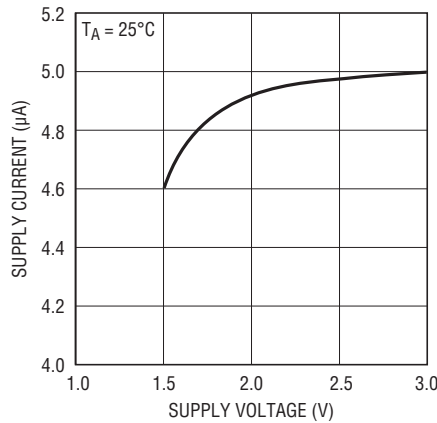
Maximum Rating condition for extended periods may affect device reliability and lifetime.

## TYPICAL PERFORMANCE CHARACTERISTICS

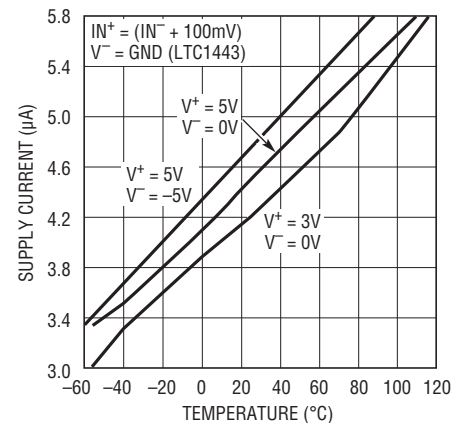
**LTC1444/LTC1445  
Hysteresis Control**



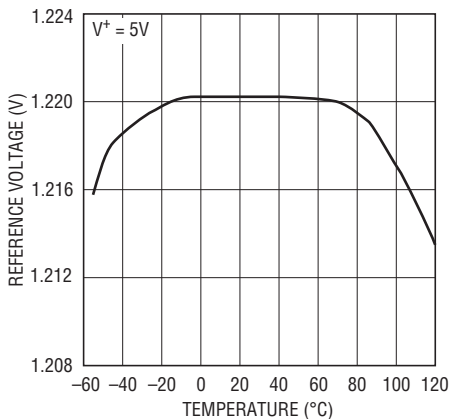
**Supply Current vs Supply Voltage**



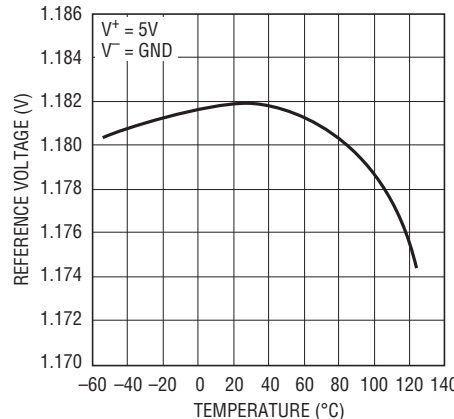
**Supply Current vs Temperature**



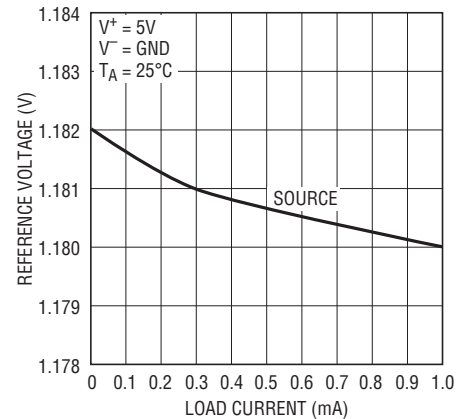
**LTC1444/LTC1445 Reference  
Voltage vs Temperature**



**LTC1443 Reference Voltage  
vs Temperature**

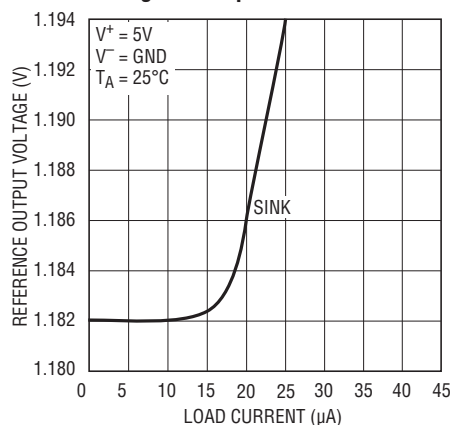


**LTC1443 Reference Output  
Voltage vs Output Load Current**



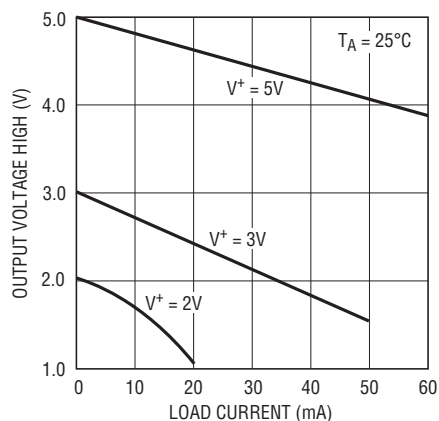
## TYPICAL PERFORMANCE CHARACTERISTICS

**LTC1443 Reference Output Voltage vs Output Load Current**



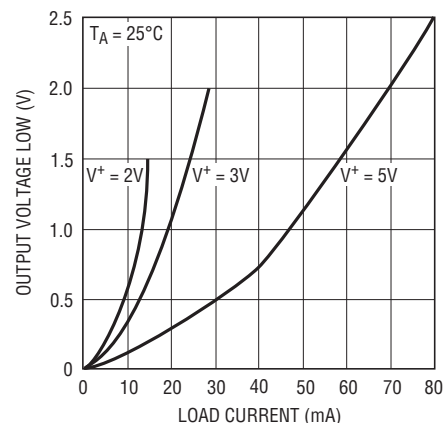
144345 G07

**Comparator Output Voltage High vs Load Current**



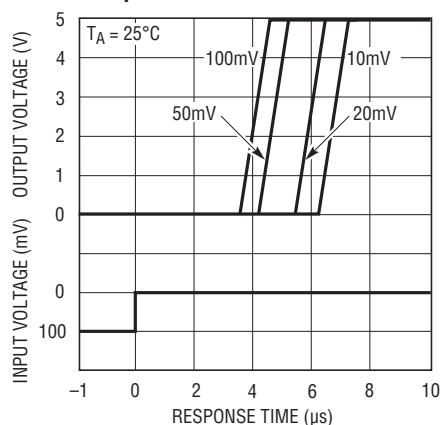
144345 G08

**Comparator Output Voltage Low vs Load Current**



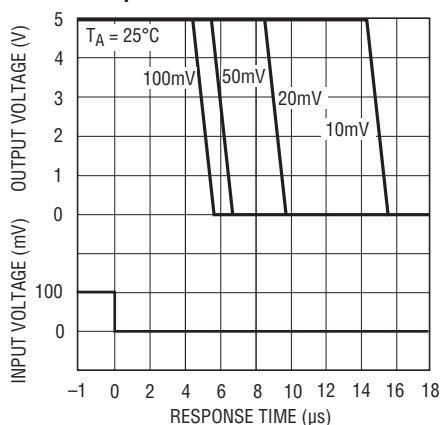
144345 G09

**Comparator Response Time vs Input Overdrive**



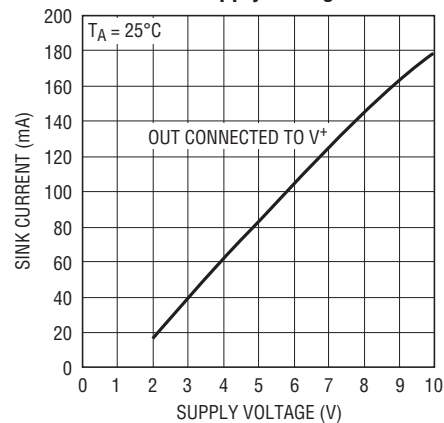
144345 G10

**Comparator Response Time vs Input Overdrive**



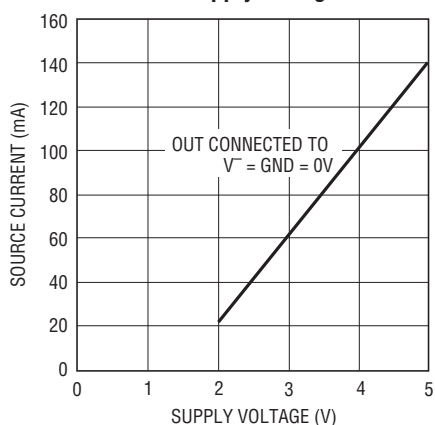
144345 G11

**Comparator Short-Circuit Sink Current vs Supply Voltage**



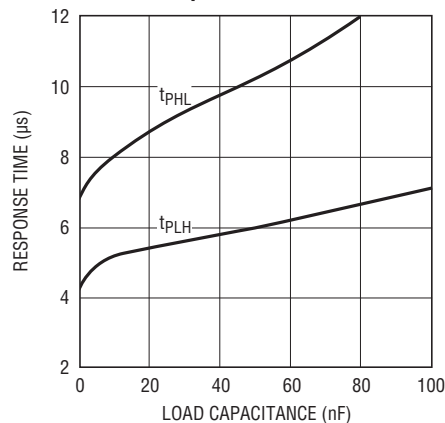
144345 G12

**Comparator Short-Circuit Source Current vs Supply Voltage**



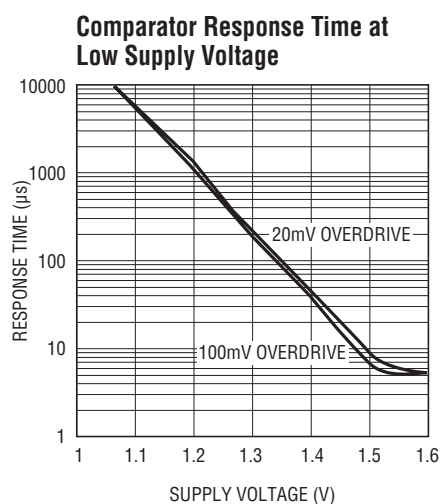
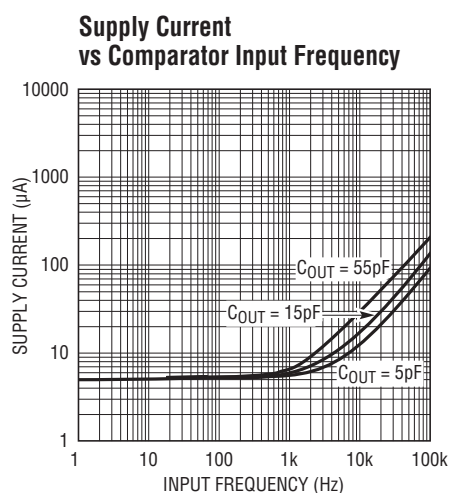
144345 G13

**Comparator Response Time vs Load Capacitance**

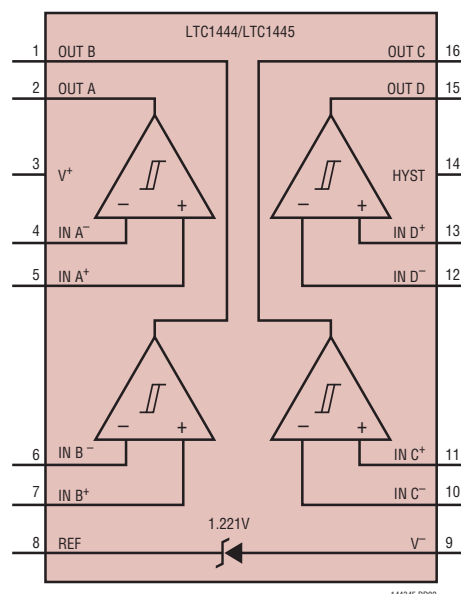
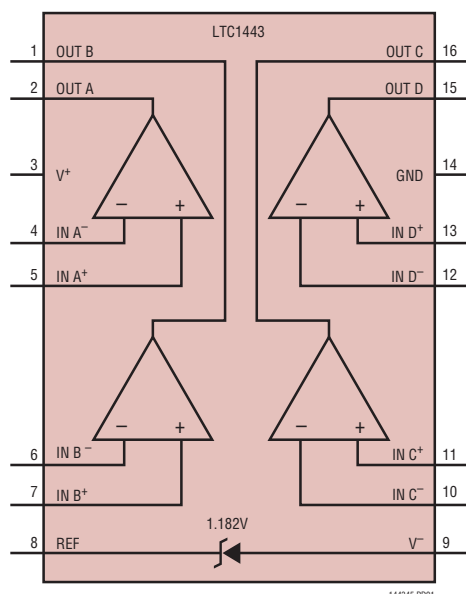


144345 G14

## TYPICAL PERFORMANCE CHARACTERISTICS



## PIN FUNCTIONS



**OUT B (Pin 1):** Comparator B Output. (Open-drain output for LTC1444). Output can source up to 40mA (LTC1443, LTC1445) and sink 5mA.

**OUT A (Pin 2):** Comparator A Output. (Open-drain output for LTC1444). Output can source up to 40mA (LTC1443, LTC1445) and sink 5mA.

**V<sup>+</sup> (Pin 3):** Positive Supply.

**IN A<sup>-</sup> (Pin 4):** Inverting Input of Comparator A. Input common mode range from V<sup>-</sup> to V<sup>+</sup> – 1.3V. Input current typically 10pA at 25°C.

**IN A<sup>+</sup> (Pin 5):** Noninverting Input of Comparator A. Input common mode range from V<sup>-</sup> to V<sup>+</sup> – 1.3V. Input current typically 10pA at 25°C.

**IN B<sup>-</sup> (Pin 6):** Inverting Input of Comparator B. Input common mode range from V<sup>-</sup> to V<sup>+</sup> – 1.3V. Input current typically 10pA at 25°C.

# LTC1443/LTC1444/LTC1445

## PIN FUNCTIONS

**IN B<sup>+</sup> (Pin 7):** Noninverting Input of Comparator B. Input common mode range from  $V^-$  to  $V^+ - 1.3V$ . Input current typically 10pA at 25°C.

**REF (Pin 8):** Reference Output. With respect to  $V^-$ . Can source up to 200μA and sink 15μA at 25°C. Drive 0.01μF bypass capacitor without oscillation.

**V<sup>-</sup> (Pin 9):** Negative Supply. Connect to ground for single supply operation on LTC1443.

**IN C<sup>-</sup> (Pin 10):** Inverting Input of Comparator C. Input common mode range from  $V^-$  to  $V^+ - 1.3V$ . Input current typically 10pA at 25°C.

**IN C<sup>+</sup> (Pin 11):** Noninverting Input of Comparator C. Input common mode range from  $V^-$  to  $V^+ - 1.3V$ . Input current typically 10pA at 25°C.

**IN D<sup>-</sup> (Pin 12):** Inverting Input of Comparator D. Input common mode range from  $V^-$  to  $V^+ - 1.3V$ . Input current typically 10pA at 25°C.

**IN D<sup>+</sup> (Pin 13):** Noninverting Input of Comparator D. Input common mode range from  $V^-$  to  $V^+ - 1.3V$ . Input current typically 10pA at 25°C.

**GND (Pin 14):** LTC1443 Ground. Connect to  $V^-$  for single supply operation.

**HYST (Pin 14):** LTC1444/LTC1445 Hysteresis Input. Connect to REF if not used. Input voltage range is from  $V_{REF}$  to  $V_{REF} - 50mV$ .

**OUT D (Pin 15):** Comparator D Output. (Open-drain output for LTC1444). Output can source up to 40mA (LTC1443, LTC1445) and sink 5mA.

**OUT C (Pin 16):** Comparator C Output. (Open-drain output for LTC1444). Output can source up to 40mA (LTC1443, LTC1445) and sink 5mA.

**Exposed Pad (Pin 17, DFN Package):** This pin is internally connected to  $V^-$ . Connection is optional, but will improve thermal dissipation.

## APPLICATIONS INFORMATION

The LTC1443/LTC1444/LTC1445 is a family of quad micropower comparators with a built-in reference (1.182V for the LTC1443 and 1.221V for the LTC1444/LTC1445). Features include programmable hysteresis (LTC1444/LTC1445), wide supply voltage range (2V to 11V) and the ability of the reference to drive up to a 0.01μF capacitor without oscillation. The comparator CMOS outputs (LTC1443/LTC1445) can source up to 40mA while the LTC1444 has an open-drain output to  $V^-$ . The supply current glitches that normally occur when the comparator output switches states have been eliminated.

### Power Supplies

The comparator family operates from a single 2V to 11V supply. The LTC1443 includes a separate ground for the comparator output stage, allowing a split supply ranging from  $\pm 1V$  to  $\pm 5.5V$ . Connecting  $V^-$  to GND on the LTC1443 allows single supply operation. If the comparator output is required to source more than 1mA or the supply source impedance is high,  $V^+$  should be bypassed with a 0.1μF capacitor.

### Comparator Inputs

The comparator inputs can swing from the negative supply ( $V^-$ ) to within 1.3V maximum of the positive supply ( $V^+$ ). The inputs can be forced 300mV below  $V^-$  or above  $V^+$  without damage, and the typical input leakage current is only  $\pm 10pA$ .

### Comparator Outputs

The LTC1443 comparator output swings between GND and  $V^+$  to assure TTL compatibility with a split supply. The LTC1444 and LTC1445 outputs swing between  $V^-$  and  $V^+$ . The outputs are capable of sourcing up to 40mA (LTC1443/LTC1445) and sinking up to 5mA while still maintaining microampere quiescent currents. The output stage does not generate crowbar switching currents during transitions which helps minimize parasitic feedback through the supply pins.

### Voltage Reference

The internal bandgap reference has a voltage of 1.182V for LTC1443 or 1.221V for LTC1444/LTC1445 referenced to

144345fd



## APPLICATIONS INFORMATION

$V^-$ . The reference accuracy is 1.5% from  $-40^{\circ}\text{C}$  to  $85^{\circ}\text{C}$ . It can source up to  $200\mu\text{A}$  and sink up to  $15\mu\text{A}$  with a 5V supply. The reference can drive a bypass capacitor of up to  $0.01\mu\text{F}$  without oscillation and by inserting a series resistor, capacitance values up to  $100\mu\text{F}$  can be used (Figure 1).

Figure 2 shows the resistor value required for different capacitor values to achieve critical damping.

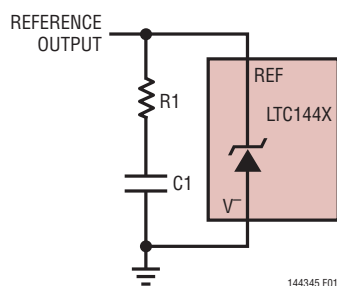


Figure 1. Damping the Reference Output

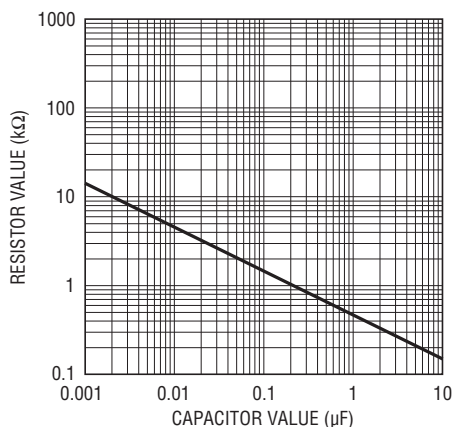


Figure 2. Damping Resistance vs Bypass Capacitor Value

Bypassing the reference can help prevent false tripping of the comparators by preventing glitches on the  $V^+$  or the reference output voltage. Figure 3 shows the bypassed reference output with a square wave applied to the  $V^+$  pin. Resistors R1 and R2 set 10mV of hysteresis, while R3 damps the reference response. Note that the comparator output doesn't trip.

### Hysteresis

Hysteresis can be added to the LTC1444/LTC1445 by connecting a resistor (R1) between the REF and HYST pins, and a second resistor (R2) from HYST to  $V^-$  (Figure 4).

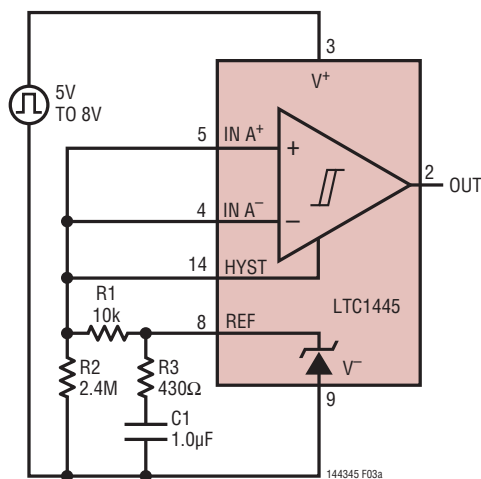


Figure 3a.  $V^+$  Glitching Test Circuit

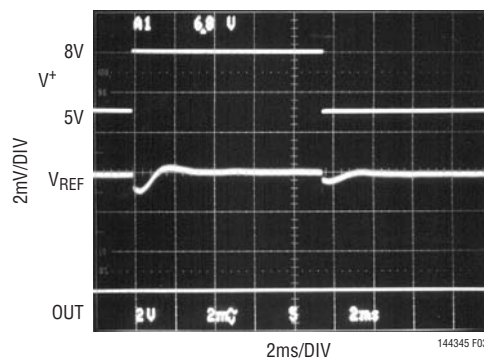


Figure 3b.  $V^+$  Glitching Response

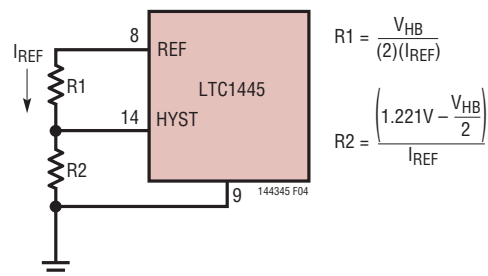


Figure 4. Programmable Hysteresis

The difference between the upper and lower threshold voltages or hysteresis voltage band ( $V_{HB}$ ) is equal to twice the voltage difference between the REF and HYST pins. When more hysteresis is added, the upper threshold increases the same amount as the lower threshold decreases. The maximum voltage allowed between REF and HYST is

144345fd



## APPLICATIONS INFORMATION

50mV, producing a maximum hysteresis voltage band of 100mV. If hysteresis is not wanted, the HYST pin should be shorted to REF. Acceptable values for  $I_{REF}$  range from 0.1 $\mu$ A to 5 $\mu$ A. If 2.4M is chosen for R2, then  $R1(k\Omega) = V_{HB} (mV)$ .

### Level Detector

The LTC1444 is ideal for use as a multisupply micropower level detector as shown in Figure 5.

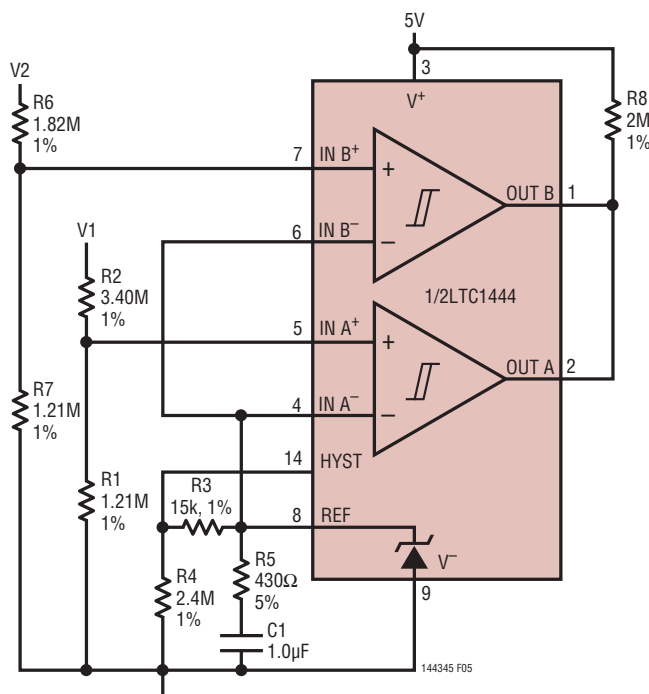


Figure 5. Glitch-Free Level Detector with Hysteresis

R1 and R2 form a voltage divider from V1 to the noninverting comparator A input. R6 and R7 are used to divide down V2, while R8 is the output pull-up resistor for the comparator outputs. R3 and R4 set the hysteresis voltage and R5 and C1 bypass the reference output. The following design procedure can be used to select the component values:

1. Choose the V1 voltage trip level, in this example 4.65V.
2. Calculate the required resistive divider ratio.

$$\text{Ratio} = V_{REF}/V_{IN}$$

$$\text{Ratio} = 1.221V/4.65V = 0.263$$

3. Choose the required hysteresis voltage band at the input,  $V_{HBIN}$ , in this example 60mV. Calculate the hysteresis voltage band referred to the comparator input  $V_{HB}$ .

$$V_{HB} = (V_{HBIN})(\text{Ratio})$$

$$V_{HB} = (60mV)(0.263)$$

$$V_{HB} = 15.78mV$$

4. Choose the values for R3 and R4 to set the hysteresis.  
 $R4 = 2.4M$

$$R3(k\Omega) = V_{HB} = 15k$$

5. Choose the values for R1 and R2 to set the trip point.

$$R1 = V_{REF}/I_{BIAS} = 1.221V/1\mu A \approx 1.21M$$

$$R2 = (R1) \left[ \frac{V_{IN}}{V_{REF} + \frac{V_{HB}}{2}} - 1 \right]$$

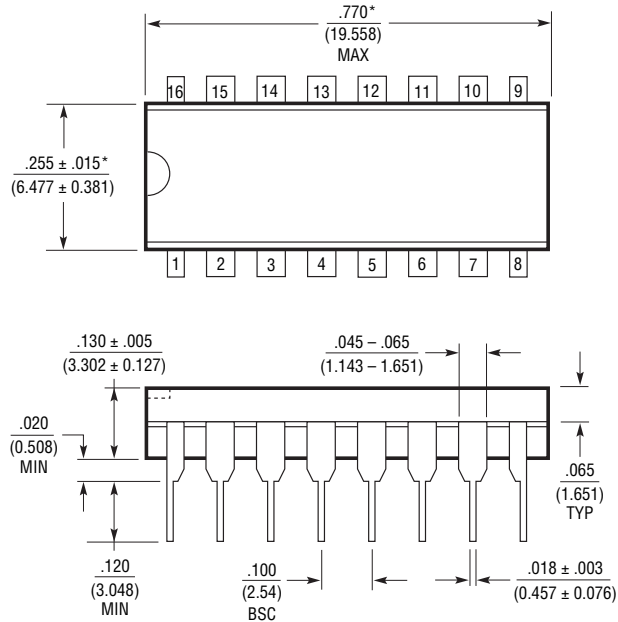
$$R2 = (1.21M) \left[ \frac{4.65V}{1.221V + \frac{15mV}{2}} - 1 \right]$$

$$R2 = 3.40M$$

Using the same equations, R6 and R7 are 1.82M and 1.21M respectively to set the trip level at 3V for V2.

## PACKAGE DESCRIPTION

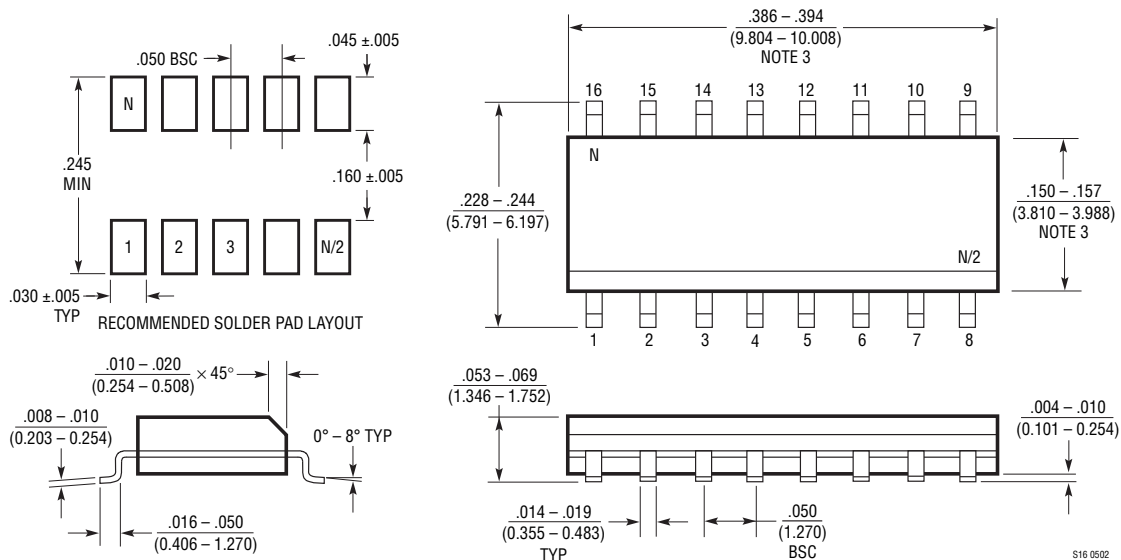
**N Package**  
**16-Lead PDIP (Narrow .300 Inch)**  
 (Reference LTC DWG # 05-08-1510)



NOTE:  
 1. DIMENSIONS ARE IN INCHES  
 MILLIMETERS  
 \*THESE DIMENSIONS DO NOT INCLUDE MOLD FLASH OR PROTRUSIONS.  
 MOLD FLASH OR PROTRUSIONS SHALL NOT EXCEED .010 INCH (0.254mm)

N16 1002

**S Package**  
**16-Lead Plastic Small Outline (Narrow .150 Inch)**  
 (Reference LTC DWG # 05-08-1610)

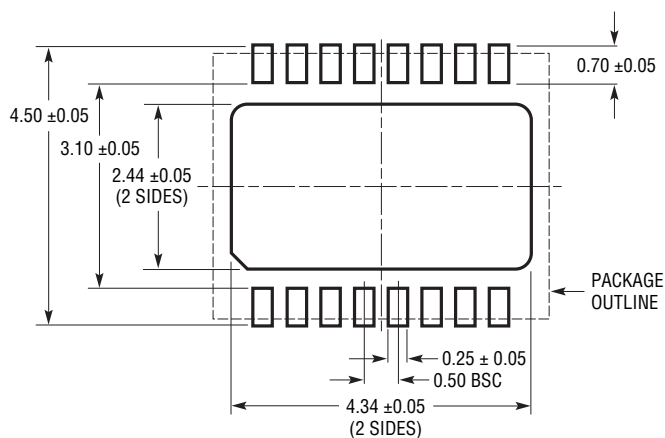


NOTE:  
 1. DIMENSIONS IN INCHES  
 MILLIMETERS  
 2. DRAWING NOT TO SCALE  
 3. THESE DIMENSIONS DO NOT INCLUDE MOLD FLASH OR PROTRUSIONS.  
 MOLD FLASH OR PROTRUSIONS SHALL NOT EXCEED .006" (0.15mm)

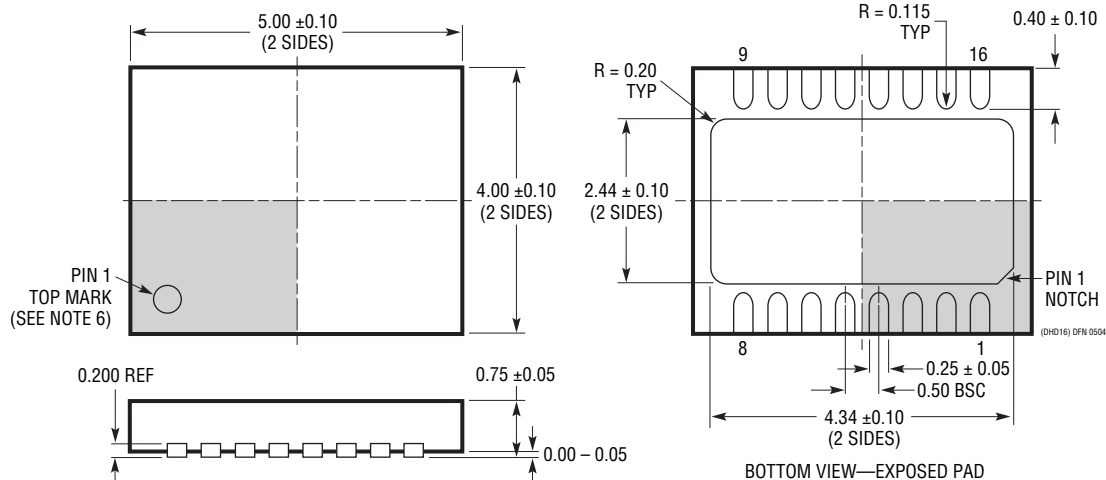
S16 0502

## PACKAGE DESCRIPTION

**DHD Package**  
**16-Lead Plastic DFN (5mm × 4mm)**  
 (Reference LTC DWG # 05-08-1707)



**RECOMMENDED SOLDER PAD PITCH AND DIMENSIONS**



**NOTE:**

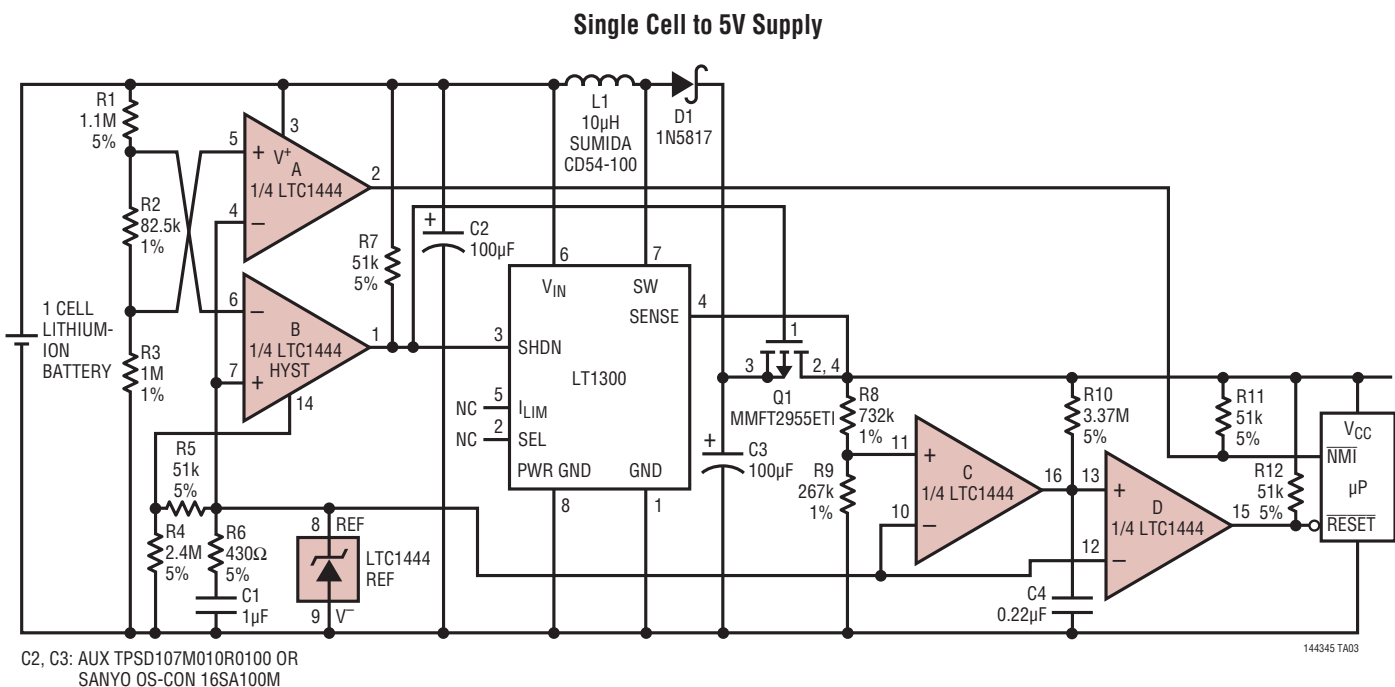
1. DRAWING PROPOSED TO BE MADE VARIATION OF VERSION (WJGD-2) IN JEDEC PACKAGE OUTLINE MO-229
2. DRAWING NOT TO SCALE
3. ALL DIMENSIONS ARE IN MILLIMETERS
4. DIMENSIONS OF EXPOSED PAD ON BOTTOM OF PACKAGE DO NOT INCLUDE MOLD FLASH. MOLD FLASH, IF PRESENT, SHALL NOT EXCEED 0.15mm ON ANY SIDE
5. EXPOSED PAD SHALL BE SOLDER PLATED
6. SHADED AREA IS ONLY A REFERENCE FOR PIN 1 LOCATION ON THE TOP AND BOTTOM OF PACKAGE

**REVISION HISTORY** (Revision history begins at Rev D)

REV	DATE	DESCRIPTION	PAGE NUMBER
D	4/11	Minor update to Figure 5 in the Applications Information section.	10

# LTC1443/LTC1444/LTC1445

## TYPICAL APPLICATION



## RELATED PARTS

PART NUMBER	DESCRIPTION	COMMENTS
LTC1041	Bang-Bang Controller with 1nA Off Current	2.8V to 18V, Ideal for Temperature or Motor Control Circuit
LTC1042	Micropower, High Accuracy Window Comparator	Fault Detect, Go/No Go Test, Supply Monitor
LTC1440/LTC1540	Ultralow Power Comparator with Reference	1.128V $\pm$ 1% Reference, $\pm$ 10mV (Max) Input Offset
LTC1441/LTC1442	Dual Ultralow Power Comparators with Reference	1.182V $\pm$ 1% Reference, 8 $\mu$ s Prop Delay, 5.7 $\mu$ A
LTC1541/LTC1542	Combined Amplifier, Comparator and Reference	1.2V $\pm$ 0.8 Reference, Amplifier Stable with 1000pF Load
LTC1842/LTC1843	Dual Ultralow Power Comparators with Reference	1.182V $\pm$ 1% Reference, 4 $\mu$ s, 3.5 $\mu$ A, Open-Drain Out
LTC1921	Dual Independent Monitors for -48V Supply and Fuse	-48V Telecom and Network Backplane Monitor
LTC1998	High Accuracy Comparator with 1.2V Reference	Adjustable Threshold and Hysteresis, 2.5mA Supply
LT <sup>®</sup> 6700-1/LT6700-2 LT6700-3	Dual Comparators with 400mV Reference	1.4V to 18V Operating Range, 18 $\mu$ s Prop Delay, Available in SOT-23 and 2mm $\times$ 3mm DFN Packages