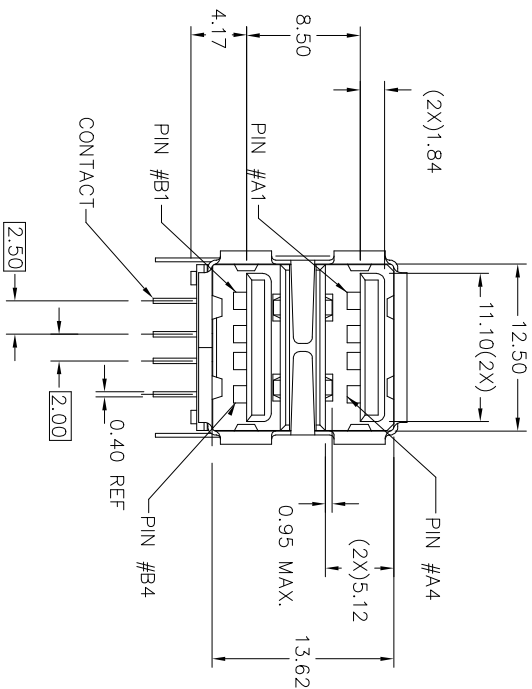
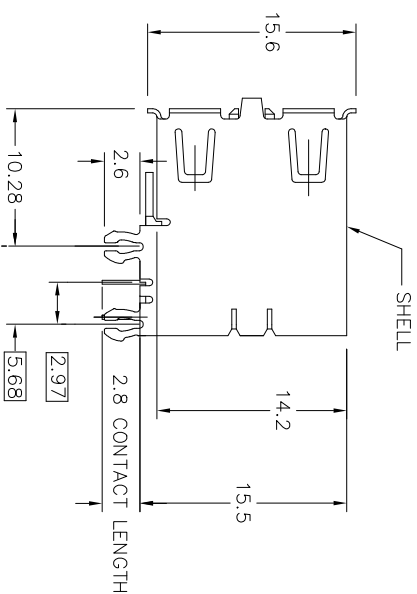


CONTACT ARMS OPTIONAL
(SEE PRODUCT NUMBER CODE)

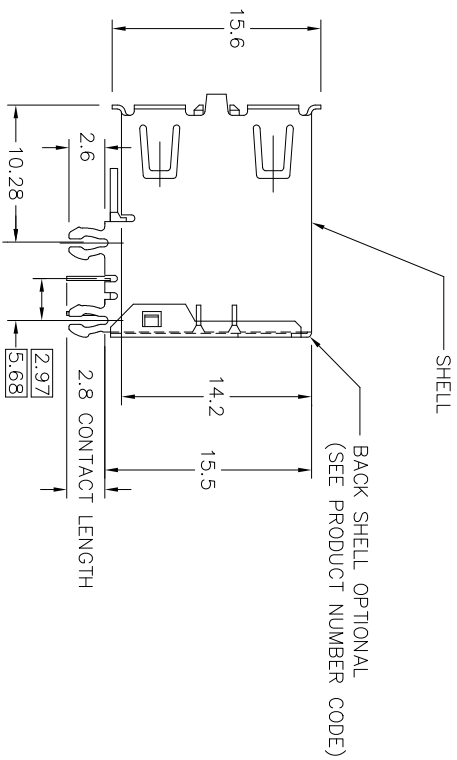
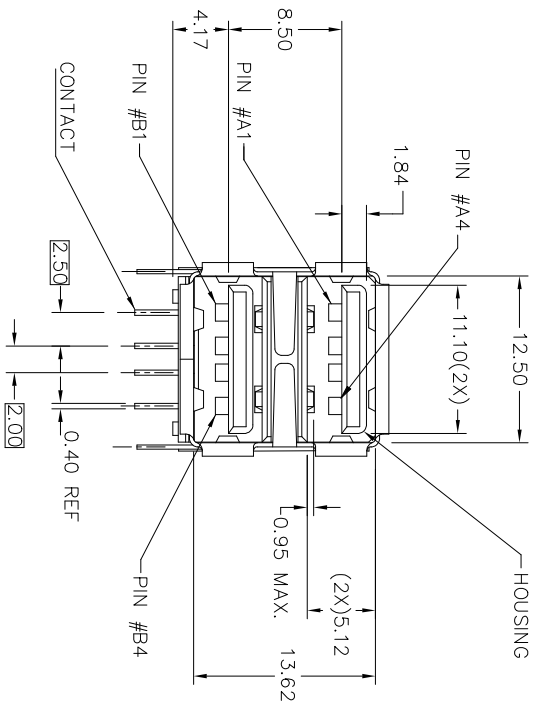
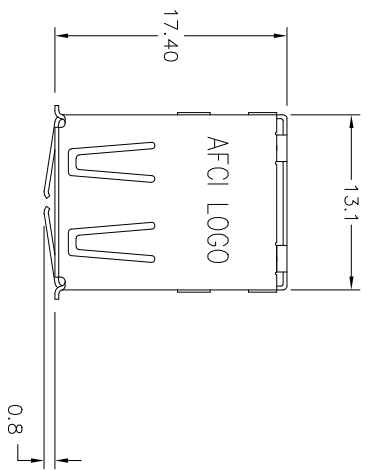


ASSEMBLY WITHOUT BACK SHIELD
72309-XX3XX SHOWN

- (CONTINUED)
6. FOR LEAD FREE P/N, A LEAD FREE LABEL WILL APPEAR AT PACKING.
 7. FOR LEAD FREE P/N, THE HOUSING WILL WITHSTAND EXPOSURE TO 260°C PEAK TEMPERATURE FOR 40 SECONDS IN A CONNECTION, INFRA-RED OR VAPOR PHASE REFLOW OVEN.
 8. FOR LEAD FREE P/N, THE PRODUCT MEET EUROPEAN UNION DIRECTIVES AND OTHER COUNTRY REGULATION AS DESCRIBED IN GS-22-008
 9. PACKAGING SPECIFICATION PER GS-14-393.
 10. PRODUCT SPECIFICATION PER GS-12-095.



mat'l. code		surface		tolerance		projection		product family	
ltr	ecn no	dr	date	ISO 1302	ISO 406	ISO 1101	1101	USB	HPL511
AL				tolerances unless otherwise specified		mm		UNIV. SERIAL BUS	
				angles	.0±.3			DOUBLE DECK RECEPTACLE	
				linear	.00±.20				
				0±.3	.000±.10				
				dr	Yuan-Yuan Bao	2019/05/29			
				eng	Yuan-Yuan Bao	2019/05/29			
				chr	LQ Lei	2019/05/29			
				qppd	Tim Yao	2019/05/29			
sheet	revision	AL							
index	sheet	1~4							



ASSEMBLY WITH BACK SHIELD
72309 - XX4XX SHOWN

D

C

B

A

D

C

B

A

product family										USB HPL511									
title										UNIV. SERIAL BUS DOUBLE DECK RECEPTACLE									
dwg no					sheet 3 of 4					size									
72309										A3									
type					Product Customer Drawing														

PRODUCT NUMBER CODE

72309 -

X

X

X

X

X

P

S

LF

NOTE:

AVAILABLE P/N'S IN FCI NOW FOLLOWED:

- 72309-0010X/8014XLF 72309-2010X/2014XLF
- 72309-0012X/8013XLF 72309-2012X/2013XLF
- 72309-0020X/8024XLF 72309-2020X/2024XLF
- 72309-0022X/8023XLF 72309-2022X/2023XLF
- 72309-0030X/8034XLF 72309-2030X/2034XLF
- 72309-0032X/8033XLF 72309-2032X/2033XLF
- 72309-0040X/8044XLF 72309-2040X/2044XLF
- 72309-0042X/8043XLF 72309-2042X/2043XLF
- 72309-1010X/7014XLF 72309-3010X/3014XLF
- 72309-1012X/7013XLF 72309-3012X/3013XLF
- 72309-1020X/7024XLF 72309-3020X/3024XLF
- 72309-1022X/7023XLF 72309-3022X/3023XLF
- 72309-1030X/7034XLF 72309-3030X/3034XLF
- 72309-1032X/7033XLF 72309-3032X/3033XLF
- 72309-1040X/7044XLF 72309-3040X/3044XLF
- 72309-1042X/7043XLF 72309-3042X/3043XLF
- 72309-0110X/8114XLF 72309-4040X/4044XLF
- 72309-0112X/8113XLF 72309-4042X/4043XLF
- 72309-0120X/8124XLF 72309-5030X/5034XLF
- 72309-0122X/8123XLF 72309-5040X/5044XLF/5044XSLF
- 72309-0130X/8134XLF 72309-5140X/5144XLF
- 72309-0132X/8133XLF 72309-6220X/9224XLF
- 72309-0140X/8144XLF 72309-4034XLF
- 72309-0142X/8143XLF 72309-3015XLF
- 72309-1110X/7114XLF 72309-3045XLF
- 72309-1112X/7113XLF 72309-5034XPLF
- 72309-1120X/7124XLF
- 72309-1122X/7123XLF
- 72309-1130X/7134XLF
- 72309-1132X/7133XLF
- 72309-1140X/7144XLF
- 72309-1142X/7143XLF

SHELL PLATING OPTION

- 0 - BARREL-PLATING
- 1 - PRE-PLATING

SHELL OPTIONS

- 1 - NO BACK SHIELD, NO ARMS, FRONT GROUNDING ARMS
- 2 - BACK SHIELD, NO FRONT GROUNDING ARMS
- 3 - NO BACK SHIELD, FRONT GROUNDING ARMS
- 4 - BACK SHIELD, FRONT GROUNDING ARMS

TERMINAL OPTION

- 3 - 50u" NI UNDERPLATE,30u" GXT CONTACT AREA,100u" MATTE TIN TAIL AREA
- 2.80mm TAIL LENGTH
- 4 - 50u" NI UNDERPLATE,30u" GXT CONTACT AREA,100u" MATTE TIN TAIL AREA
- 2.80mm TAIL LENGTH
- 5 - 50u" NI UNDERPLATE,30u" GOLD CONTACT AREA,100u" MATTE TIN TAIL AREA
- 3.94mm TAIL LENGTH

PACKAGING OPTIONS

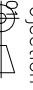
- B - TUBES
- R - TAPE & REEL
- Q - SPECIAL TUBES (LENGTH 600MM MAX)
- Δ S - SPECIAL TAPE & REEL (REEL'S DIAMETER IS 380MM)

WITH DATE CODE

ONLY FOR PANASONIC

LEAD FREE MARK

- LEAD FREE CONVERSION RULES -
- HOUSING COLOR AND SHELL PLATING OPTION: 0 TO 8, 1 TO 7, 6 TO 9
- TERMINAL PLATING OPTION: 0 TO 4, 2 TO 3
- SPECIFIC SHELL MATERIAL FOR 12K CYCLES DURABILITY,
- PART NUMBER: 72309-S033XPLF/-S034XPLF

mat'l. code				surface		tolerance		projection	product family	
ltr	ecn	no	dr	date	ISO 1302	ISO 406	ISO		USB	HPL511
AL					tolerances unless otherwise specified				UNIV. SERIAL BUS DOUBLE DECK RECEPTACLE	
					angles	linear	.0±.3			
							.000±.10	mm		
					dr	Yuan-Yuan B00	2019/05/29	scale 1:1		
					eng	Yuan-Yuan B00	2019/05/29			
					chr	LQ Lei	2019/05/29			
					qppd	Tim Yoo	2019/05/29			
sheet	revision	AL								
index	sheet	1~4								