

SY Series

■ Specifications

Item			SY - () - K	SY - () W - K	Remarks / conditions
			Single type	Bifurcated type	
Contact data	Configuration		1 form C (SPDT)		
	Construction		Single (cross bar)	Bifurcated (cross bar)	
	Material		Gold overlay silver palladium		
	Resistance		Max. 100mΩ at 1A, 6VDC		Initial
	Contact rating		0.5A, 120VAC or 1A, 24VDC		Resistive
	Max. carrying current		2A		
	Max. switching current		1A		
	Max. switching voltage		120VAC / 60VDC		
	Max. switching power		60AV / 24W		
	Min. switching load *		1mA, 1VDC	0.1mA, 100mVDC	
	Capacitance (at 10 MHz)		Approx. 1.4 pF (between open contacts) Approx. 5.0 pF (between coil and contacts)		
Coil	Rated power (20°C)		150 to 175 mW		
	Operate power (20°C)		75 to 86 mW		
	Operating temperature range		-30°C ~ +90°C (18V coil: +85°C, 24V coil: +80°C)		No frost
Timing data	Operate		Max. 5ms (without bounce)		At rated voltage
	Release		Max. 2ms (without bounce)		At rated voltage
Life	Mechanical		Min. 5 x 10 ⁶ operations		
	Electrical		Min. 100 x 10 ³ ops.		At contact rating
Insulation	Insulation resistance		Min. 1000MΩ at 500VDC	Min. 1000MΩ at 250VDC	Initial
	Dielectric strength	Open contacts	400VAC, 1 minute	300VAC, 1 minute	
		Coil contact	1000VAC, 1 minute		
	Surge strength	Coil to contacts	1,500V / 10 x 160μs standard wave		
Other	Vibration resistance	Misoperation ≥1us	10 to 55Hz to 10hz Single amplitude 0.75mm, 3 axis, 6 cycles		
		Endurance	10 to 55Hz to 10hz Single amplitude 0.75mm, 3 axis, 6 hours		
	Shock resistance	Misoperation ≥1us	Min. 300m/s ² (11 ± 1ms)		
		Endurance	Min. 1,000m/s ² (6 ± 1ms)		
	Dimensions / weight		7.4 x 12.5 x 9.5 mm / approx. 1.7g		

*: Minimum switching loads mentioned above are reference values. Please perform the confirmation test with actual load before production since reference values may vary according to switching frequencies, environmental conditions.

SY Series

■ Coil Data

Coil code	Rated Coil Voltage (VDC)	Coil Resistance +/-10% (Ω)	Must Operate Voltage* (VDC)	Must Release Voltage* (VDC)	Rated Power (mW)
1.5	1.5	15	1.05	0.08	150
3	3	60	2.1	0.15	
4.5	4.5	135	3.2	0.23	
5	5	167	3.5	0.25	
6	6	240	4.2	0.3	
9	9	540	6.3	0.45	
12	12	960	8.4	0.6	
18	18	1,940	12.6	0.9	170
24	24	3,290	16.8	1.2	175

Note: All values in the table are valid at 20°C and zero contact current, unless otherwise specified.

*: Specified operated values are valid for pulse wave voltage.

Please use at rated coil voltage. Please refer to characteristic data and set up adequate voltage in case of use at over voltage.

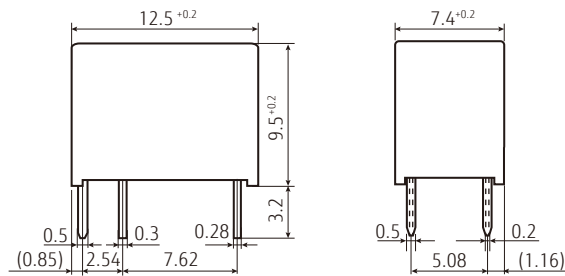
■ Safety Standards

Type	Compliance	Contact rating
UL	UL 478	Flammability: UL 94-V0 (plastics) 0.5A, 120VAC (resistive) 1A, 30VDC (resistive) 0.15A 48VDC (resistive)
	UL 508	
	E 45026	
CSA	C22.2 No. 14 LR 35579	

SY Series

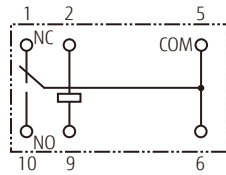
■ Dimensions

- Dimensions

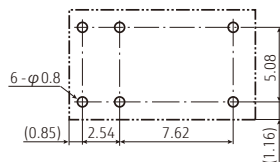


*Dimensions of the terminals do not include thickness of pre-solder.

- Schematics
(BOTTOM VIEW)



- PC Board Mounting Hole Layout
(BOTTOM VIEW)



*Tolerance of PC board mounting hole layout : ± 0.1 unless otherwise specified.

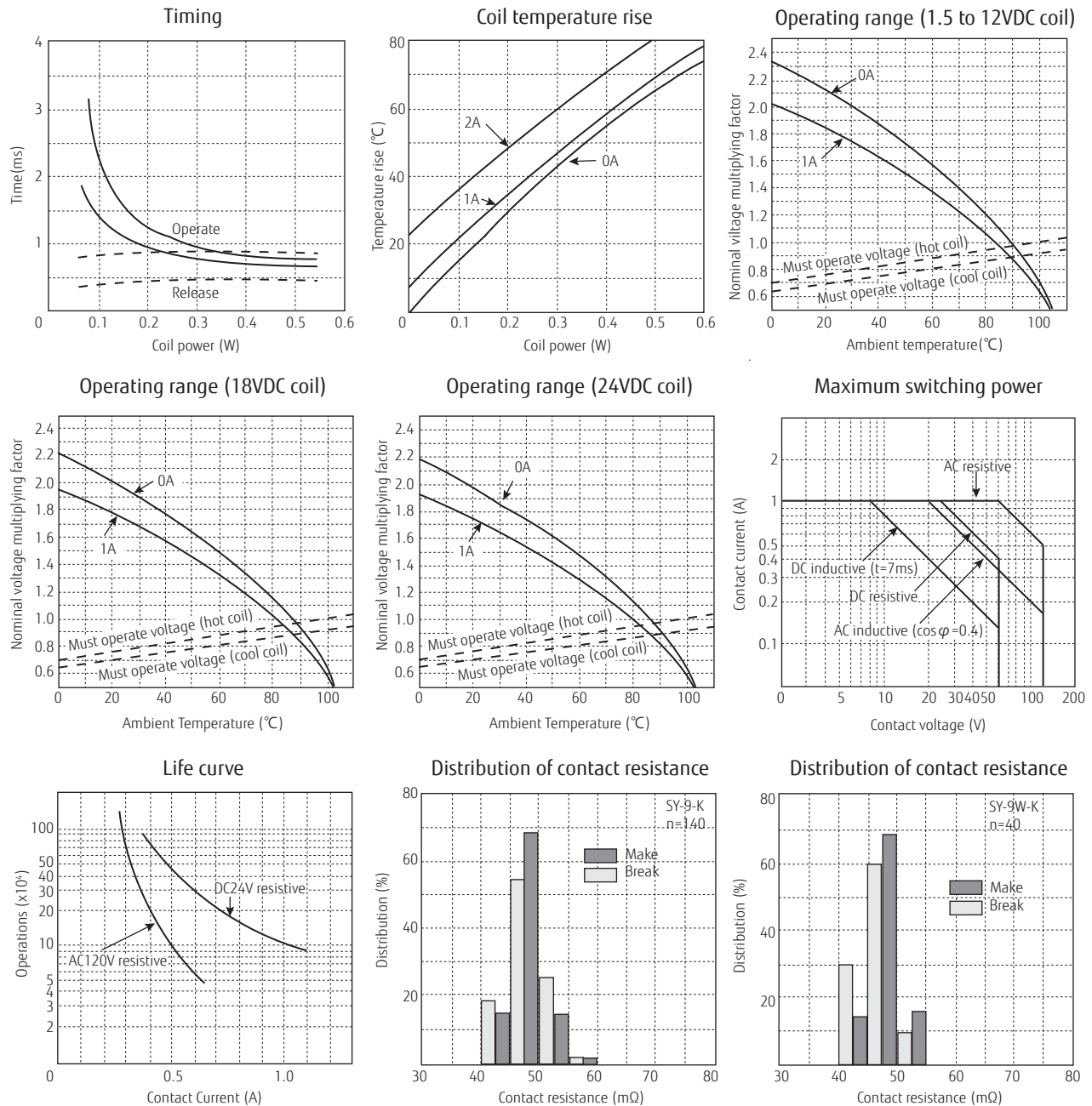
(): Reference value

Unit: mm

SY Series

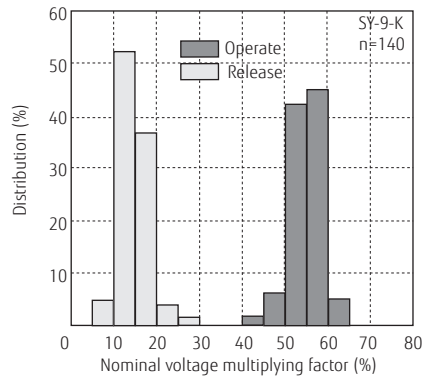
■ Characteristic Data (Reference)

* Characteristic data is not guaranteed value but measured values of samples from production line.

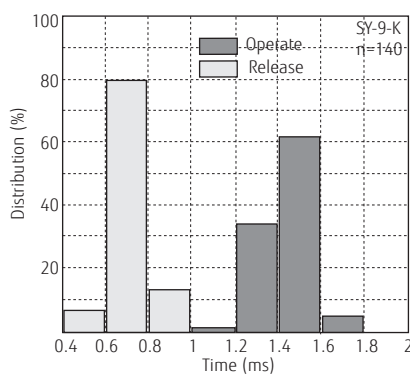


SY Series

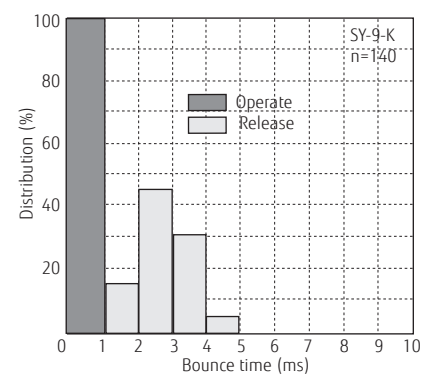
Distribution of operate & release voltage



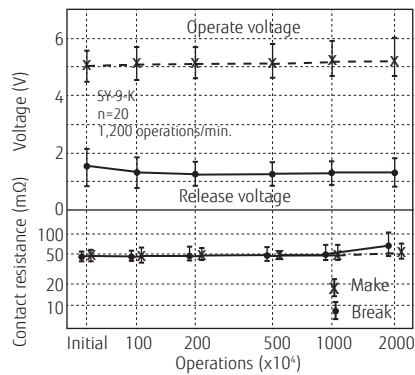
Distribution of operate & release time



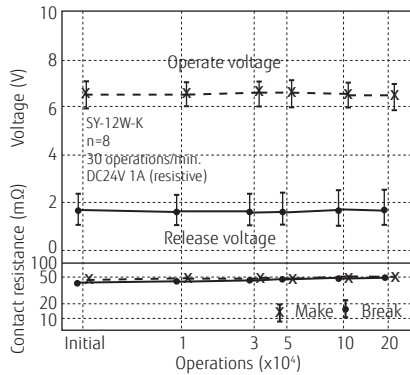
Distribution of bounce time



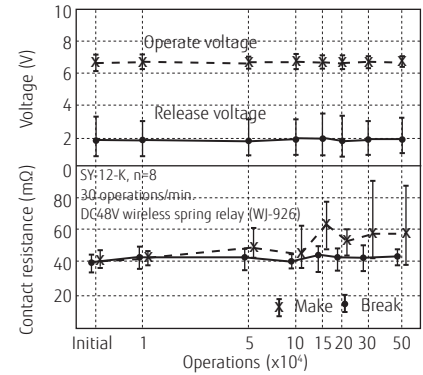
Mechanical life test



Electrical life test



Electrical life test



GENERAL INFORMATION

1. ROHS Compliance

- All relays produced by Fujitsu Components are compliant with RoHS directive 2011/65/EU including amendments.
- Use of Cadmium in electrical contacts is exempted as per Annex III of the RoHS directive 2001/65/EU. Please consider expiry date of exemption. Relays with Cadmium containing contacts are not to be used for new designs.
- All relays are lead-free. Please refer to Lead-Free Status Info for older date codes at: <http://www.fujitsu.com/downloads/MICRO/fcai/relays/lead-free-letter.pdf>
- Characteristic data is not guaranteed values, but measured values of samples from production line.

2. Recommended lead free solder condition

- Lead free solder plating on relay terminals is Sn-3.0Ag-0.5Cu, unless otherwise specified. This material has been verified to be compatible with PbSn assembly process.
- Recommended solder for assembly: Sn-3.0Ag-0.5Cu.

Flow Solder Condition:

Pre-Heating: maximum 120°C
within 90 sec.
Soldering: dip within 5 sec. at
255°C ± 5°C solder bath
Relay must be cooled by air immediately
after soldering

Solder by Soldering Iron:

Soldering Iron: 30-60W
Temperature: maximum 340-360°C
Duration: maximum 3 sec.

We highly recommend that you confirm your actual solder conditions

3. Moisture Sensitivity

- Moisture Sensitivity Level is not applicable to electromechanical relays, unless otherwise indicated.

4. Tin Whiskers

- Dipped SnAgCu solder is known as presenting a low risk to tin whisker development. No considerable length whisker was found by our in house test.

SY Series

Fujitsu Components International Headquarter Offices

Japan FUJITSU COMPONENT LIMITED Shinagawa Seaside Park Tower 19F, 12-4, Higashi-shinagawa 4-chome, Shinagawa-ku, Tokyo, 140-0002, Japan Tel: (81-3) 3450-1682 Fax: (81-3) 3474-2385 Email: fcl-contact@cs.jp.fujitsu.com Web: www.fujitsu.com/jp/fcl/	Asia Pacific FUJITSU COMPONENTS ASIA, LTD. 102E Pasir Panjang Road #01-01 Citilink Warehouse Complex Singapore 118529 Tel: (65) 6375-8560 Fax: (65) 6273-3021 Email: fcal@sg.fujitsu.com Web: www.fujitsu.com/sg/products/devices/components	Korea FUJITSU COMPONENTS KOREA LIMITED Alpha Tower #403, 645 Sampyeong-dong, Bundang-gu, Seongnam-si, Gyeonggi-do, 13524 Korea Tel: (82) 31-708-7108 Fax: (82) 31-709-7108 Email: fcal@sg.fujitsu.com www.fujitsu.com/sg/products/devices/components/
North and South America FUJITSU COMPONENTS AMERICA, INC 2290 North First Street, Suite 212 San Jose, CA 95131, USA Tel: (1-408) 745-4900 Fax: (1-408) 745-4970 Email: components@us.fujitsu.com Web: us.fujitsu.com/components	China FUJITSU ELECTRONIC COMPONENTS (SHANGHAI) CO., LTD. Unit 4306, InterContinental Center 100 Yu Tong Road, Shanghai 200070, China Tel: (86-21) 3253 0998 Fax: (86-21) 3253 0997 Email: fcal@sg.fujitsu.com Web: www.fujitsu.com/sg/products/devices/components	
Europe FUJITSU COMPONENTS EUROPE B.V. Diamantlaan 25 2132 WV Hoofddorp Netherlands Tel: (31-23) 5560910 Fax: (31-23) 5560950 Email: info@fceu.fujitsu.com Web: www.fujitsu.com/uk/components	Hong Kong FUJITSU COMPONENTS HONG KONG CO., LTD Unit 506, Inter-Continental Plaza No.94 Granville Road, Tsim Sha Tsui, Kowloon, Hong Kong Tel: (852) 2881-8495 Tex: (852) 2894-9512 Email: fcal@sg.fujitsu.com Web: www.fujitsu.com/sg/products/devices/components/	

©2017 Fujitsu Components Europe B.V. All rights reserved. All trademarks or registered trademarks are the property of their respective owners.

The contents, data and information in this datasheet are provided by Fujitsu Component Ltd. as a service only to its user and only for general information purposes.

The use of the contents, data and information provided in this datasheet is at the users' own risk.

Fujitsu has assembled this datasheet with care and will endeavor to keep the contents, data and information correct, accurate, comprehensive, complete and up to date.

Fujitsu Components Europe B.V. and affiliated companies do however not accept any responsibility or liability on their behalf, nor on behalf of its employees, for any loss or damage, direct, indirect or consequential, with respect to this datasheet, its contents, data, and information and related graphics and the correctness, reliability, accuracy, comprehensiveness, usefulness, availability and completeness thereof.

Nor do Fujitsu Components Europe B.V. and affiliated companies accept on their behalf, nor on behalf of its employees, any responsibility or liability for any representation or warrant of any kind, express or implied, including warranties of any kind for merchantability or fitness for particular use, with respect to these datasheets, its contents, data, information and related graphics and the correctness, reliability, accuracy, comprehensiveness, usefulness, availability and completeness thereof. Rev. April 12th, 2017