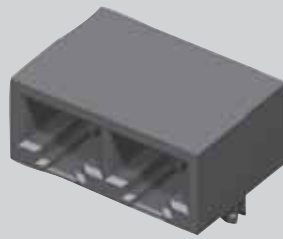
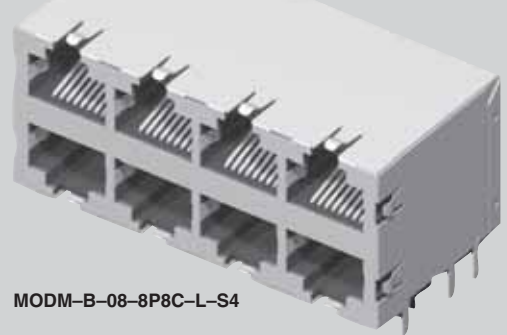




MODM-A-02-8P8C-G



MODM-B-08-8P8C-L-S4



## MODM-A, MODM-B SERIES

# GANGED IN-LINE/STACKED MODULAR JACKS

## SPECIFICATIONS

For complete specifications and recommended PCB layouts see [www.samtec.com?MODM-A](http://www.samtec.com?MODM-A)

### Insulator Material:

PBT Glass Filled

### Contact Material:

Phosphor Bronze

### Shield Material:

Copper Alloy

### Plating:

Gold on Contacts, Nickel on Shield, Gold on Tails

### Operating Temp Range:

-25°C to +90°C

### Current Rating:

2 A per Contact

### Voltage Rating:

120 VAC

### Contact Resistance:

20 mΩ max

### Minimum Cycles:

500

### System Applications:

CAT3

### Packaging:

Packaged and shipped in Bulk Packaging Trays; Trays suitable for automation are available upon request.

### RoHS Compliant:

Yes

### Lead-Free Solderable:

Yes (Wave Solder only)



MODM - A -

NO. OF PORTS

POSITIONS CONTACTS

PLATING

SHIELD OPTION

-02 thru -06,  
-08, -10

-8P8C  
= 8 Positions  
8 Contacts  
per port

-G  
= 15μ" (0,38μm)  
Gold on Mating Area,  
Gold Flash on Tails

-E  
= 50μ" (1,27μm)  
Gold on Mating Area,  
Gold Flash on Tails

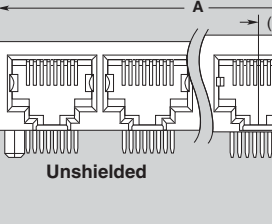
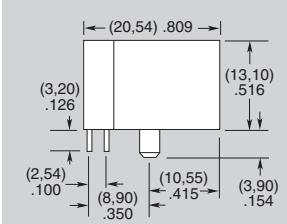
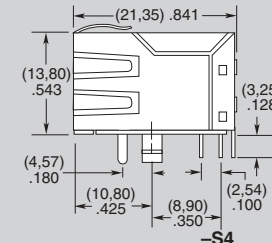
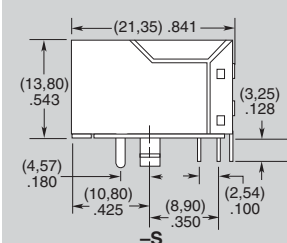
(Leave Blank for  
Unshielded)

-S  
= Shielded  
(No Panel Grounds)  
(-03 and -10  
Not Available)

-S4  
= Shielded with Top,  
Bottom and Side  
Panel Grounds  
(Requires -02, -04  
or -08 ports)

## APPLICATION SPECIFIC OPTION

Other plating options available.  
Call Samtec.



NO. OF PORTS	A Unshielded	A Shielded
-02	(30,46) 1.199	(31,00) 1.220
-03	(44,43) 1.749	N/A
-04	(58,40) 2.299	(58,94) 2.320
-05	(72,37) 2.849	(72,91) 2.870
-06	(86,34) 3.399	(86,88) 3.420
-08	(114,28) 4.499	(114,90) 4.524
-10	(128,28) 5.050	N/A

## SPECIFICATIONS

For complete specifications and recommended PCB layouts see [www.samtec.com?MODM-B](http://www.samtec.com?MODM-B)

### Insulator Material:

PBT Glass Filled

### Contact Material:

Phosphor Bronze

### Shield Material:

Copper Alloy

### Plating:

Gold on Contacts, Nickel on Shield, Gold on Tails

### Operating Temp Range:

-25°C to +90°C

### Current Rating:

1.5 A per contact

### Voltage Rating:

120 VAC max

### Contact Resistance:

20 mΩ max

### Minimum Cycles:

500

### System Applications:

CAT3

### Packaging:

Packaged and shipped in Bulk Packaging Trays; Trays suitable for automation are available upon request.

### RoHS Compliant:

Yes

### Lead-Free Solderable:

Yes (Wave Solder only)



MODM - B -

NO. OF PORTS

POSITIONS CONTACTS

PLATING

OPTIONS

-02, -04, -06,  
-08, -12, -16

-8P8C  
= 8 Positions  
8 Contacts  
per port

-L  
= 15μ" (0,38 μm)  
Gold on Mating Area,  
Gold Flash on Tails

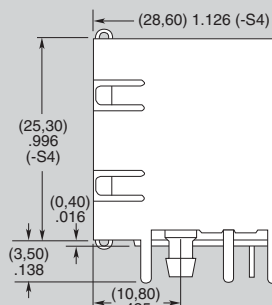
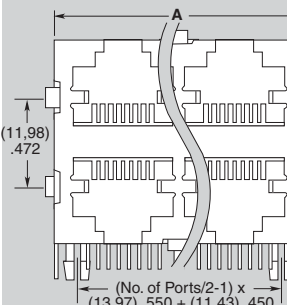
-U  
= 50μ" (1,27μm)  
Gold on Mating Area,  
Gold Flash on Tails

(Leave Blank for  
Unshielded)

-S4  
= Shielded  
with Top,  
Bottom and  
Side Panel  
Grounds  
(-02 port does  
not have panel  
grounds)

## APPLICATION SPECIFIC OPTION

Other plating options available.  
Call Samtec.



Shielded

NO. OF PORTS	A Unshielded	A Shielded
-02	(16,50) .650	(17,25) 0.679
-04	(30,50) 1.200	(31,25) 1.230
-06	(44,50) 1.752	(45,25) 1.781
-08	(58,50) 2.303	(59,25) 2.333
-12	(86,50) 3.406	(87,25) 3.435
-16	(114,50) 4.508	(115,25) 4.537

Due to technical progress, all designs, specifications and components are subject to change without notice.

WWW.SAMTEC.COM

SAMTEC USA • Tel: 1-800-SAMTEC-9 or 812-944-6733 SAMTEC SILICON VALLEY • Tel: 408-395-5900 SAMTEC SOUTHERN CALIFORNIA • Tel: 1-800-726-8329  
 SAMTEC AMERICA LATINA COMERCIO EXTERIOR LTDA • Tel: (+55 31) 3786 3227 SAMTEC UNITED KINGDOM • Tel: 44 01236 739292 SAMTEC GERMANY • Tel: +49 (0) 89 / 89460-0  
 SAMTEC FRANCE • Tel: 33 01 60 95 06 60 SAMTEC ITALY • Tel: 39 039 8890337 SAMTEC NORDIC/BALTIC • Tel: +46-84477280 SAMTEC BENELUX • Tel: 44 01236 739292 SAMTEC ISRAEL • Tel: 972-3-7526600  
 SAMTEC INDIA • Tel: +91-80-3272 1612 SAMTEC ASIA PACIFIC • Tel: 65 6745-5955 SAMTEC JAPAN • Tel: 045-475-1385 SAMTEC CHINA • Tel: 86-21-61103766 SAMTEC TAIWAN • Tel: 886-2-2735-6109  
 6904858 SAMTEC KOREA • Tel: 82-31-717-5685 SAMTEC ANZ • Tel: 613 9512 7747 SAMTEC SOUTH AFRICA • Tel: 27 11 452 8112