

ADG1404* Product Page Quick Links

Last Content Update: 10/05/2016

Comparable Parts

View a parametric search of comparable parts

Documentation

Application Notes

- AN-1024: How to Calculate the Settling Time and Sampling Rate of a Multiplexer

Data Sheet

- ADG1404: 1.5 Ω On Resistance, ± 15 V/12 V/ ± 5 V, 4:1, iCMOS Multiplexer Data Sheet

Reference Materials

Informational

- iCMOS Technology Enabling the +/-10V World

Product Selection Guide

- Switches and Multiplexers Product Selection Guide

Design Resources

- ADG1404 Material Declaration
- PCN-PDN Information
- Quality And Reliability
- Symbols and Footprints

Discussions

View all ADG1404 EngineerZone Discussions

Sample and Buy

Visit the product page to see pricing options

Technical Support

Submit a technical question or find your regional support number

* This page was dynamically generated by Analog Devices, Inc. and inserted into this data sheet. Note: Dynamic changes to the content on this page does not constitute a change to the revision number of the product data sheet. This content may be frequently modified.

TABLE OF CONTENTS

Features	1	Continuous Current, S or D.....	6
Applications.....	1	Absolute Maximum Ratings	7
Functional Block Diagram	1	ESD Caution.....	7
General Description	1	Pin Configurations and Function Descriptions	8
Product Highlights	1	Truth Table	8
Revision History	2	Typical Performance Characteristics	9
Specifications.....	3	Terminology	12
15 V Dual Supply.....	3	Test Circuits.....	13
12 V Single Supply.....	4	Outline Dimensions	16
5 V Dual Supply.....	5	Ordering Guide	16

REVISION HISTORY

9/2016—Rev. A to Rev. B

Changes to Figure 3.....	8
Updated Outline Dimensions.....	16
Changes to Ordering Guide	16

3/2009—Rev. 0 to Rev. A

Changes to Power Requirements, I_{DD} , Digital Inputs = 5 V Parameter, Table 1.....	3
Changes to Power Requirements, I_{DD} , Digital Inputs = 5 V Parameter, Table 2.....	4
Updated Outline Dimensions	16

7/2008—Revision 0: Initial Version

SPECIFICATIONS

15 V DUAL SUPPLY

$V_{DD} = 15\text{ V} \pm 10\%$, $V_{SS} = -15\text{ V} \pm 10\%$, $GND = 0\text{ V}$, unless otherwise noted.

Table 1.

Parameter	25°C	−40°C to +85°C	−40°C to +125°C	Unit	Test Conditions/Comments
ANALOG SWITCH					
Analog Signal Range			V_{DD} to V_{SS}	V	
On Resistance (R_{ON})	1.5			Ω typ	$V_S = \pm 10\text{ V}$, $I_S = -10\text{ mA}$; see Figure 22
	1.8	2.3	2.6	Ω max	$V_{DD} = +13.5\text{ V}$, $V_{SS} = -13.5\text{ V}$
On-Resistance Match Between Channels (ΔR_{ON})	0.1			Ω typ	$V_S = \pm 10\text{ V}$, $I_S = -10\text{ mA}$
	0.18	0.19	0.21	Ω max	
On-Resistance Flatness ($R_{FLAT(ON)}$)	0.3			Ω typ	$V_S = \pm 10\text{ V}$, $I_S = -10\text{ mA}$
	0.36	0.4	0.45	Ω max	
LEAKAGE CURRENTS					
Source Off Leakage, I_S (Off)	± 0.03			nA typ	$V_{DD} = +16.5\text{ V}$, $V_{SS} = -16.5\text{ V}$
	± 0.55	± 2	± 12.5	nA max	$V_S = \pm 10\text{ V}$, $V_S = \mp 10\text{ V}$; see Figure 23
Drain Off Leakage, I_D (Off)	± 0.04			nA typ	$V_S = \pm 10\text{ V}$, $V_S = \mp 10\text{ V}$; see Figure 23
	± 0.55	± 4	± 30	nA max	
Channel On Leakage, I_D , I_S (On)	± 0.1			nA typ	$V_S = V_D = \pm 10\text{ V}$; see Figure 24
	± 2	± 4	± 30	nA max	
DIGITAL INPUTS					
Input High Voltage, V_{INH}			2.0	V min	
Input Low Voltage, V_{INL}			0.8	V max	
Input Current, I_{INL} or I_{INH}	0.005			μA typ	$V_{IN} = V_{GND}$ or V_{DD}
			± 0.1	μA max	
Digital Input Capacitance, C_{IN}	3.5			pF typ	
DYNAMIC CHARACTERISTICS¹					
Transition Time, $t_{TRANSITION}$	150			ns typ	$R_L = 300\ \Omega$, $C_L = 35\text{ pF}$
	180	220	250	ns max	$V_S = +10\text{ V}$; see Figure 29
t_{ON} (EN)	100			ns typ	$R_L = 300\ \Omega$, $C_L = 35\text{ pF}$
	120	145	165	ns max	$V_S = +10\text{ V}$; see Figure 31
t_{OFF} (EN)	110			ns typ	$R_L = 300\ \Omega$, $C_L = 35\text{ pF}$
	135	165	185	ns max	$V_S = +10\text{ V}$; see Figure 31
Break-Before-Make Time Delay, t_{BBM}	35			ns typ	$R_L = 300\ \Omega$, $C_L = 35\text{ pF}$
			10	ns min	$V_{S1} = V_{S2} = 10\text{ V}$; see Figure 30
Charge Injection	−20			pC typ	$V_S = 0\text{ V}$, $R_S = 0\ \Omega$, $C_L = 1\text{ nF}$; see Figure 32
Off Isolation	70			dB typ	$R_L = 50\ \Omega$, $C_L = 5\text{ pF}$, $f = 100\text{ kHz}$; see Figure 25
Channel-to-Channel Crosstalk	82			dB typ	$R_L = 50\ \Omega$, $C_L = 5\text{ pF}$, $f = 100\text{ kHz}$; see Figure 27
Total Harmonic Distortion + Noise	0.011			% typ	$R_L = 110\ \Omega$, 10 V p-p , $f = 20\text{ Hz}$ to 20 kHz ; see Figure 28
−3 dB Bandwidth	55			MHz typ	$R_L = 50\ \Omega$, $C_L = 5\text{ pF}$; see Figure 26
Insertion Loss	−0.17			dB typ	$R_L = 50\ \Omega$, $C_L = 5\text{ pF}$, $f = 1\text{ MHz}$; see Figure 26
C_S (Off)	23			pF typ	$f = 1\text{ MHz}$, $V_S = 0\text{ V}$
C_D (Off)	90			pF typ	$f = 1\text{ MHz}$, $V_S = 0\text{ V}$
C_D , C_S (On)	170			pF typ	$f = 1\text{ MHz}$, $V_S = 0\text{ V}$
POWER REQUIREMENTS					
I_{DD}	0.001			μA typ	$V_{DD} = +16.5\text{ V}$, $V_{SS} = -16.5\text{ V}$
			1	μA max	Digital inputs = 0 V or V_{DD}
I_{DD}	170			μA typ	Digital inputs = 5 V
			285	μA max	
I_{SS}	0.001			μA typ	Digital inputs = 0 V or V_{DD}
			1	μA max	
V_{DD}/V_{SS}			$\pm 4.5/\pm 16.5$	V min/max	$GND = 0\text{ V}$

¹ Guaranteed by design, not subject to production test.

12 V SINGLE SUPPLY

$V_{DD} = 12\text{ V} \pm 10\%$, $V_{SS} = 0\text{ V}$, $GND = 0\text{ V}$, unless otherwise noted.

Table 2.

Parameter	25°C	−40°C to +85°C	−40°C to +125°C	Unit	Test Conditions/Comments
ANALOG SWITCH					
Analog Signal Range			0 V to V _{DD}	V	
On Resistance (R _{ON})	2.8 3.5	4.3	4.8	Ω typ Ω max	V _S = 0 V to 10 V, I _S = −10 mA; see Figure 22 V _{DD} = 10.8 V, V _{SS} = 0 V
On-Resistance Match Between Channels (ΔR _{ON})	0.13			Ω typ	V _S = 0 V to 10 V, I _S = −10 mA
On-Resistance Flatness (R _{FLAT(ON)})	0.21	0.23	0.25	Ω max	V _S = 0V to 10 V, I _S = −10 mA
	0.6			Ω typ	
	1.1	1.2	1.3	Ω max	
LEAKAGE CURRENTS					
Source Off Leakage, I _S (Off)	±0.02 ±0.55	±2	±12.5	nA typ nA max	V _{DD} = 13.2 V, V _{SS} = 0 V V _S = 1 V/10 V, V _D = 10 V/1 V; see Figure 23
Drain Off Leakage, I _D (Off)	±0.03 ±0.55	±4	±30	nA typ nA max	V _S = 1 V/10 V, V _D = 10 V/1 V; see Figure 23
Channel On Leakage, I _D , I _S (On)	±0.1 ±1.5	±4	±30	nA typ nA max	V _S = V _D = 1 V or 10 V; see Figure 24
DIGITAL INPUTS					
Input High Voltage, V _{INH}			2.0	V min	V _{IN} = V _{GND} or V _{DD}
Input Low Voltage, V _{INL}			0.8	V max	
Input Current, I _{INL} or I _{INH}	0.001		±0.1	μA typ μA max	
Digital Input Capacitance, C _{IN}	3.5			pF typ	
DYNAMIC CHARACTERISTICS ¹					
Transition Time, t _{TRANSITION}	230 300	375	430	ns typ ns max	R _L = 300 Ω, C _L = 35 pF V _S = 8 V; see Figure 29
t _{ON} (EN)	180 240	295	335	ns typ ns max	R _L = 300 Ω, C _L = 35 pF V _S = 8 V; see Figure 31
t _{OFF} (EN)	115 160	190	220	ns typ ns max	R _L = 300 Ω, C _L = 35 pF V _S = 8 V; see Figure 31
Break-Before-Make Time Delay, t _{BBM}	100		10	ns typ ns min	R _L = 300 Ω, C _L = 35 pF V _{S1} = V _{S2} = 8 V; see Figure 30
Charge Injection	30			pC typ	V _S = 6 V, R _S = 0 Ω, C _L = 1 nF; see Figure 32
Off Isolation	80			dB typ	R _L = 50 Ω, C _L = 5 pF, f = 100kHz; see Figure 25
Channel-to-Channel Crosstalk	82			dB typ	R _L = 50 Ω, C _L = 5 pF, f = 100kHz; see Figure 27
−3 dB Bandwidth	35			MHz typ	R _L = 50 Ω, C _L = 5 pF; see Figure 26
Insertion Loss	−0.3			dB typ	R _L = 50 Ω, C _L = 5 pF, f = 1 MHz; see Figure 26
C _S (Off)	39			pF typ	f = 1 MHz, V _S = 6 V
C _D (Off)	150			pF typ	f = 1 MHz, V _S = 6 V
C _D , C _S (On)	217			pF typ	f = 1 MHz, V _S = 6 V
POWER REQUIREMENTS					
I _{DD}	0.001		1	μA typ μA max	V _{DD} = 13.2 V Digital inputs = 0 V or V _{DD}
I _{DD}	170		285	μA typ μA max	Digital inputs = 5 V
V _{DD}			5/16.5	V min/max	GND = 0 V, V _{SS} = 0 V

¹ Guaranteed by design, not subject to production test.

5 V DUAL SUPPLY

$V_{DD} = 5\text{ V} \pm 10\%$, $V_{SS} = -5\text{ V} \pm 10\%$, $GND = 0\text{ V}$, unless otherwise noted.

Table 3.

Parameter	25°C	−40°C to +85°C	−40°C to +125°C	Unit	Test Conditions/Comments
ANALOG SWITCH					
Analog Signal Range			V _{DD} to V _{SS}	V	
On Resistance (R _{ON})	3.3 4	4.9	5.4	Ω typ Ω max	V _S = ±4.5 V, I _S = −10 mA; see Figure 22 V _{DD} = +4.5 V, V _{SS} = −4.5 V
On-Resistance Match Between Channels (ΔR _{ON})	0.13			Ω typ	V _S = ±4.5 V, I _S = −10 mA
On-Resistance Flatness (R _{FLAT(ON)})	0.22	0.23	0.25	Ω max	V _S = ±4.5 V, I _S = −10 mA
	0.9			Ω typ	
	1.1	1.24	1.31	Ω max	
LEAKAGE CURRENTS					
Source Off Leakage, I _S (Off)	±0.02			nA typ	V _{DD} = +5.5 V, V _{SS} = −5.5 V
	±0.2	±1	±12.5	nA max	V _S = ±4.5 V, V _D = ∓4.5 V; see Figure 23
Drain Off Leakage, I _D (Off)	±0.02			nA typ	
	±0.25	±1.2	±15	nA max	V _S = ±4.5 V, V _D = ∓4.5 V; see Figure 23
Channel On Leakage, I _D , I _S (On)	±0.05			nA typ	V _S = V _D = ±4.5 V; see Figure 24
	±0.25	±1.5	±20	nA max	
DIGITAL INPUTS					
Input High Voltage, V _{INH}			2.0	V min	V _{IN} = V _{GND} or V _{DD}
Input Low Voltage, V _{INL}			0.8	V max	
Input Current, I _{INL} or I _{INH}	0.001		±0.1	μA typ μA max	
				pF typ	
Digital Input Capacitance, C _{IN}	3.5				
DYNAMIC CHARACTERISTICS ¹					
Transition Time, t _{TRANSITION}	340	560	615	ns typ	R _L = 300 Ω, C _L = 35 pF
	470			ns max	V _S = 3 V; Figure 29
t _{ON} (EN)	260	430	480	ns typ	R _L = 300 Ω, C _L = 35 pF
	355			ns max	V _S = 3 V; Figure 31
t _{OFF} (EN)	220	365	400	ns typ	R _L = 300 Ω, C _L = 35 pF
	315			ns max	V _S = 3 V; Figure 31
Break-Before-Make Time Delay, t _{BBM}	100		50	ns typ	R _L = 300 Ω, C _L = 35 pF
				ns min	V _{S1} = V _{S2} = 3 V; see Figure 30
Charge Injection	30			pC typ	V _S = 0 V, R _S = 0 Ω, C _L = 1 nF; see Figure 32
Off Isolation	80			dB typ	R _L = 50 Ω, C _L = 5 pF, f = 100 kHz; see Figure 25
Channel-to-Channel Crosstalk	82			dB typ	R _L = 50 Ω, C _L = 5 pF, f = 100 kHz; see Figure 27
−3 dB Bandwidth	40			MHz typ	R _L = 50 Ω, C _L = 5 pF; see Figure 26
Insertion Loss	0.27			dB typ	R _L = 50 Ω, C _L = 5 pF, f = 1 MHz; see Figure 26
Total Harmonic Distortion + Noise	0.03			% typ	R _L = 110 Ω, 2.5 V p-p, f = 20 Hz to 20 kHz; see Figure 28
C _S (Off)	33			pF typ	V _S = 0 V, f = 1 MHz
C _D (Off)	128			pF typ	V _S = 0 V, f = 1 MHz
C _D , C _S (On)	210			pF typ	V _S = 0 V, f = 1 MHz
POWER REQUIREMENTS					
I _{DD}	0.001		1	μA typ μA max	V _{DD} = 5.5 V, V _{SS} = −5.5 V Digital inputs = 0 V, 5 V, or V _{DD}
I _{SS}	0.001		1	μA typ μA max	Digital inputs = 0 V or V _{DD}
V _{DD} /V _{SS}			±4.5/±16.5	V min/max	GND = 0 V

¹ Guaranteed by design, not subject to production test.

CONTINUOUS CURRENT, S OR D

Table 4.

Parameter	25°C	85°C	125°C	Unit	Test Conditions/Comments
CONTINUOUS CURRENT, S or D ¹					
15 V Dual Supply					$V_{DD} = +13.5\text{ V}$, $V_{SS} = -13.5\text{ V}$
ADG1404 TSSOP	350	220	100	mA max	
ADG1404 LFCSP	450	300	140	mA max	
12 V Single Supply					$V_{DD} = 10.8\text{ V}$, $V_{SS} = 0\text{ V}$
ADG1404 TSSOP	300	220	100	mA max	
ADG1404 LFCSP	400	300	140	mA max	
5 V Dual Supply					$V_{DD} = +4.5\text{ V}$, $V_{SS} = -4.5\text{ V}$
ADG1404 TSSOP	300	220	100	mA max	
ADG1404 LFCSP	400	300	140	mA max	

¹ Guaranteed by design, not subject to production test.

ABSOLUTE MAXIMUM RATINGS

$T_A = 25^\circ\text{C}$, unless otherwise noted.

Table 5.

Parameter	Rating
V_{DD} to V_{SS}	35 V
V_{DD} to GND	–0.3 V to +25 V
V_{SS} to GND	+0.3 V to –25 V
Analog Inputs ¹	$V_{SS} - 0.3\text{ V}$ to $V_{DD} + 0.3\text{ V}$ or 30 mA, whichever occurs first
Digital Inputs	GND – 0.3 V to $V_{DD} + 0.3\text{ V}$ or 30 mA, whichever occurs first
Peak Current, S or D	600 mA (pulsed at 1 ms, 10% duty cycle maximum)
Continuous Current, S or D ²	Data + 15%
Operating Temperature Range	
Automotive (Y Version)	–40°C to +125°C
Storage Temperature Range	–65°C to +150°C
Junction Temperature	150°C
14-Lead TSSOP, θ_{JA} Thermal Impedance (4-layer board)	112°C/W
16-Lead LFCSP, θ_{JA} Thermal Impedance	30.4°C/W
Reflow Soldering Peak Temperature, Pb free	260(+0/–5)°C

¹ Overvoltages at IN, S, and D are clamped by internal diodes. Current must be limited to the maximum ratings given.

² See data given in Table 4.

Stresses at or above those listed under Absolute Maximum Ratings may cause permanent damage to the product. This is a stress rating only; functional operation of the product at these or any other conditions above those indicated in the operational section of this specification is not implied. Operation beyond the maximum operating conditions for extended periods may affect product reliability.

Only one absolute maximum rating can be applied at any one time.

ESD CAUTION



ESD (electrostatic discharge) sensitive device.

Charged devices and circuit boards can discharge without detection. Although this product features patented or proprietary protection circuitry, damage may occur on devices subjected to high energy ESD. Therefore, proper ESD precautions should be taken to avoid performance degradation or loss of functionality.

PIN CONFIGURATIONS AND FUNCTION DESCRIPTIONS

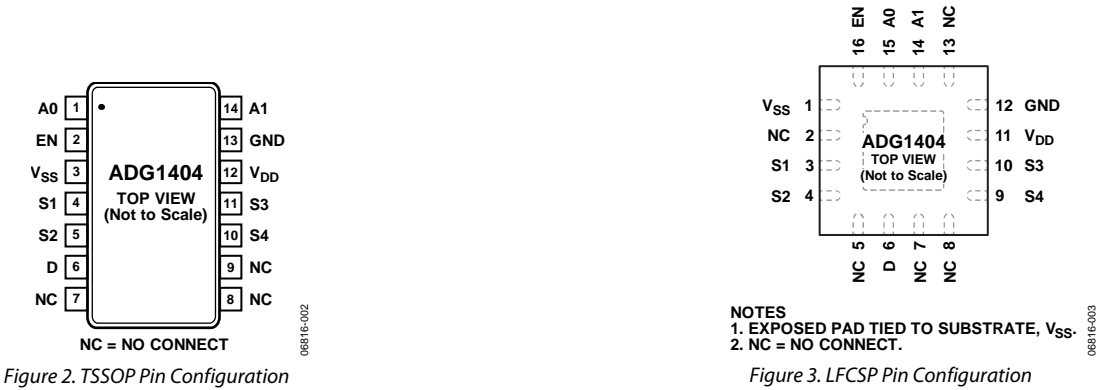


Table 6. Pin Function Descriptions

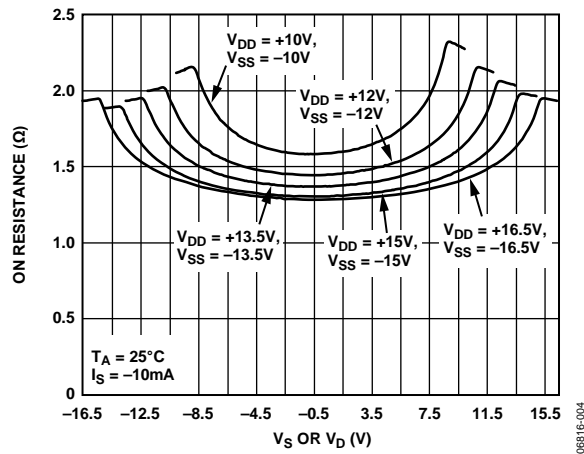
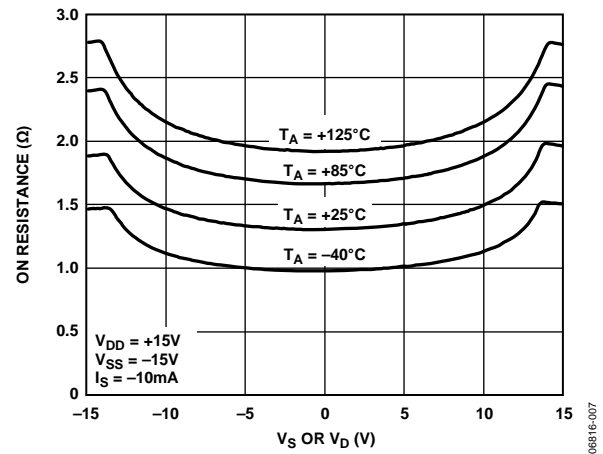
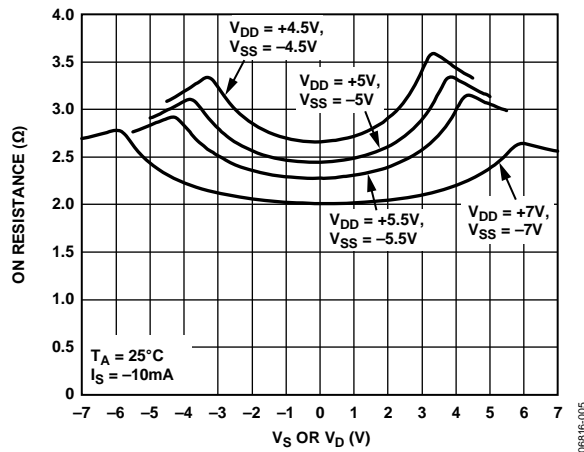
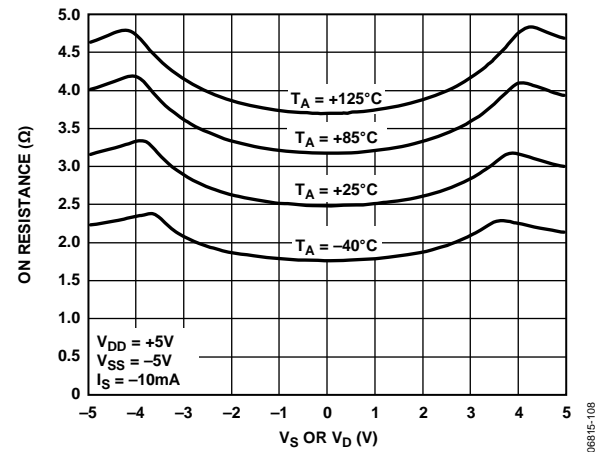
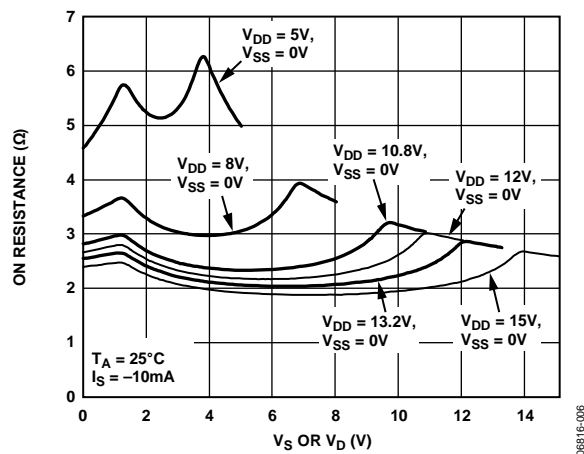
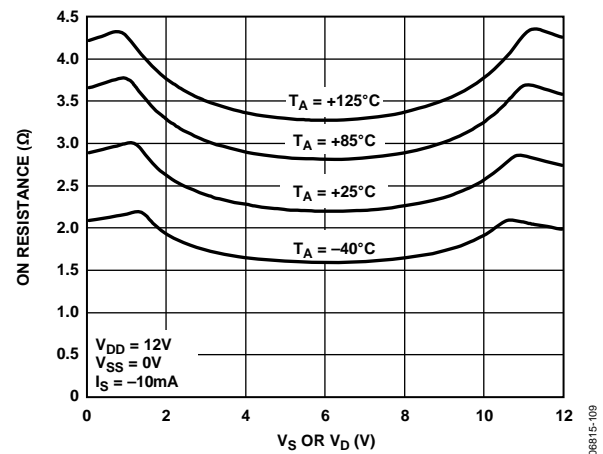
Pin No.		Mnemonic	Description
TSSOP	LFCSP		
1	15	A0	Logic Control Input.
2	16	EN	Active High Digital Input. When this pin is low, the device is disabled and all switches are off. When this pin is high, the Ax logic inputs determine the on switches.
3	1	VSS	Most Negative Power Supply Potential.
4	3	S1	Source Terminal. Can be an input or an output.
5	4	S2	Source Terminal. Can be an input or an output.
6	6	D	Drain Terminal. Can be an input or an output.
7 to 9	2, 5, 7, 8, 13	NC	No Connection.
10	9	S4	Source Terminal. Can be an input or an output.
11	10	S3	Source Terminal. Can be an input or an output.
12	11	VDD	Most Positive Power Supply Potential.
13	12	GND	Ground (0 V) Reference.
14	14	A1	Logic Control Input.

TRUTH TABLE

Table 7.

EN	A1	A0	S1	S2	S3	S4
0	X	X	Off	Off	Off	Off
1	0	0	On	Off	Off	Off
1	0	1	Off	On	Off	Off
1	1	0	Off	Off	On	Off
1	1	1	Off	Off	Off	On

TYPICAL PERFORMANCE CHARACTERISTICS

Figure 4. On Resistance as a Function of V_D (V_S), Dual SupplyFigure 7. On Resistance as a Function of V_D (V_S) for Different Temperatures, 15 V Dual SupplyFigure 5. On Resistance as a Function of V_D (V_S), Dual SupplyFigure 8. On Resistance as a Function of V_D (V_S) for Different Temperatures, 5 V Dual SupplyFigure 6. On Resistance as a Function of V_D (V_S), Single SupplyFigure 9. On Resistance as a Function of V_D (V_S) for Different Temperatures, Single Supply

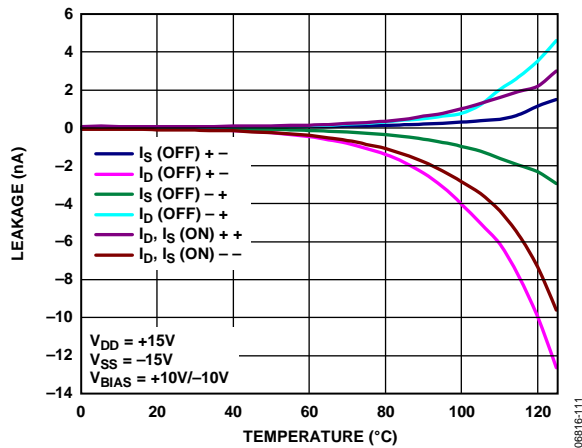


Figure 10. Leakage Currents as a Function of Temperature, 15 V Dual Supply

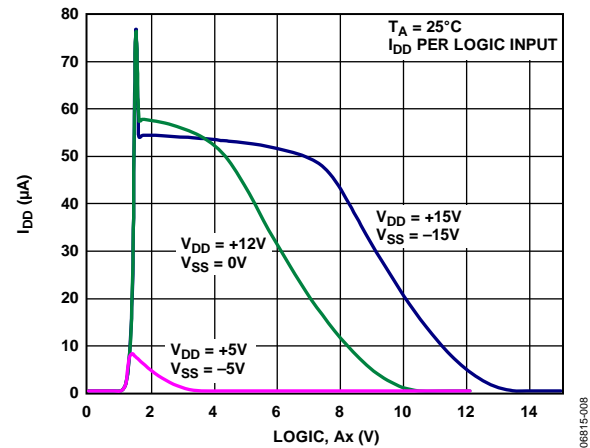
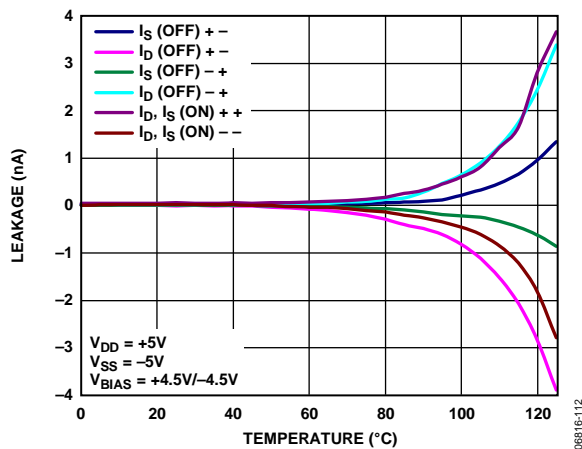
Figure 13. I_{DD} vs. Logic Level

Figure 11. Leakage Currents as a Function of Temperature, 5 V Dual Supply

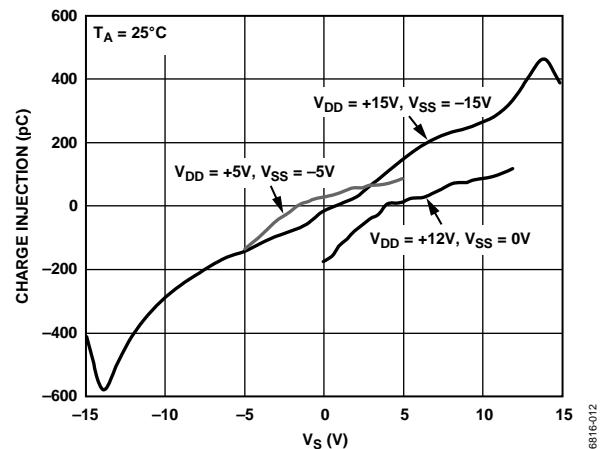


Figure 14. Charge Injection vs. Source Voltage

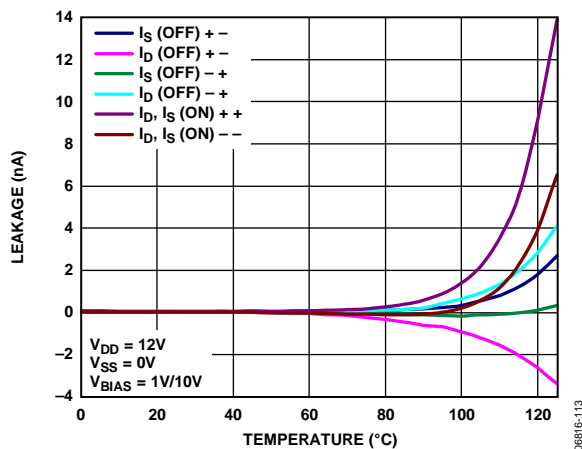


Figure 12. Leakage Currents as a Function of Temperature, 12 V Single Supply

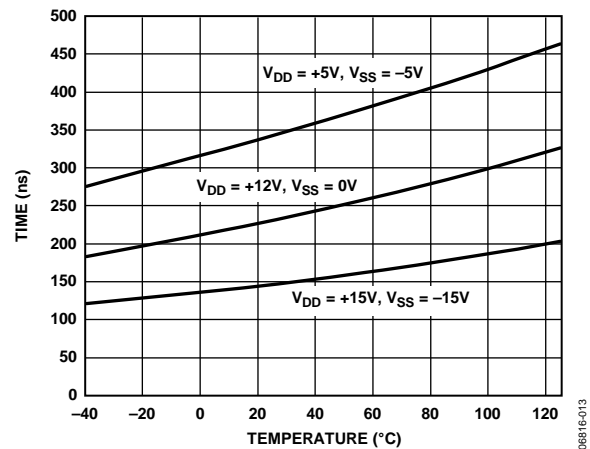


Figure 15. Transition Times vs. Temperature

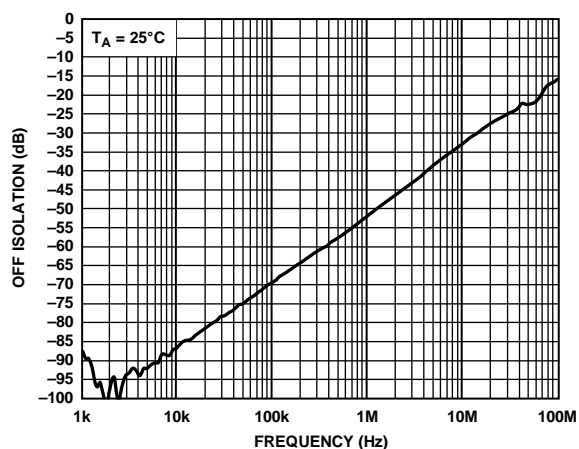
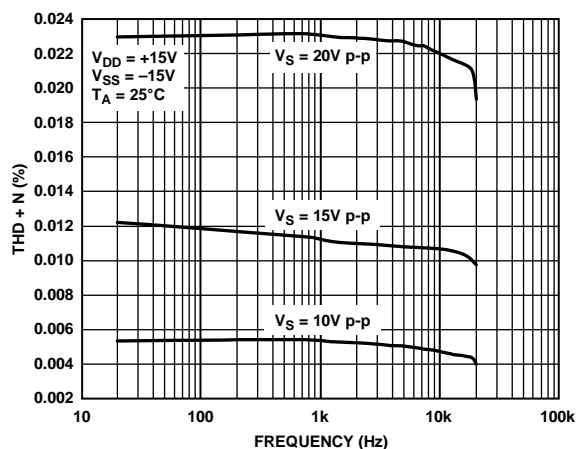


Figure 16. Off Isolation vs. Frequency

06816-014

Figure 19. THD + N vs. Frequency at ± 15 V

06816-017

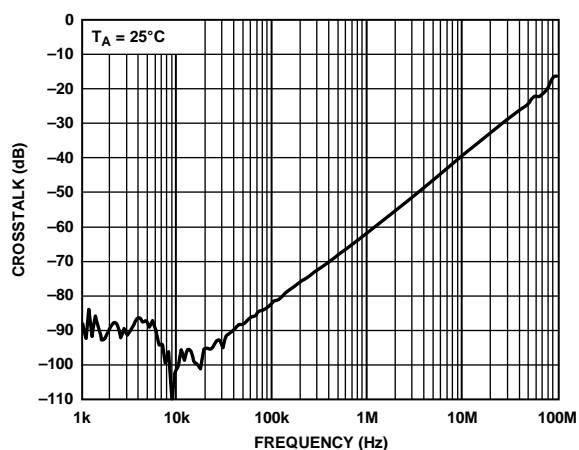
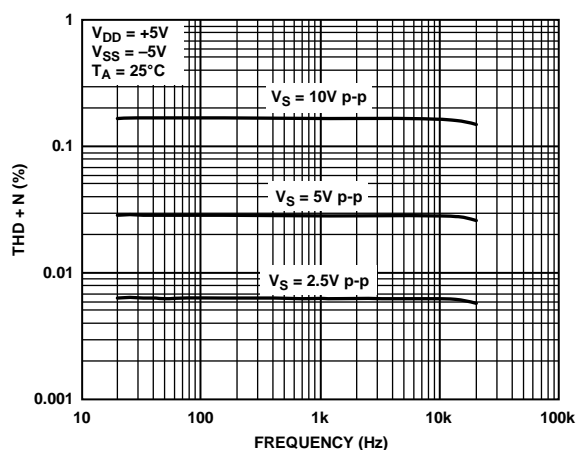


Figure 17. Crosstalk vs. Frequency

06816-015

Figure 20. THD + N vs. Frequency at ± 5 V

06816-018

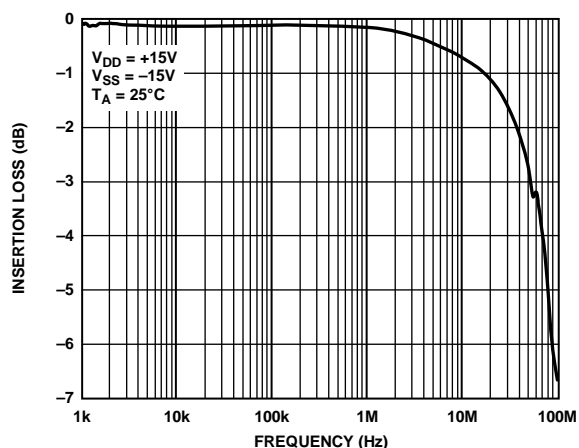


Figure 18. On Response vs. Frequency

06816-016

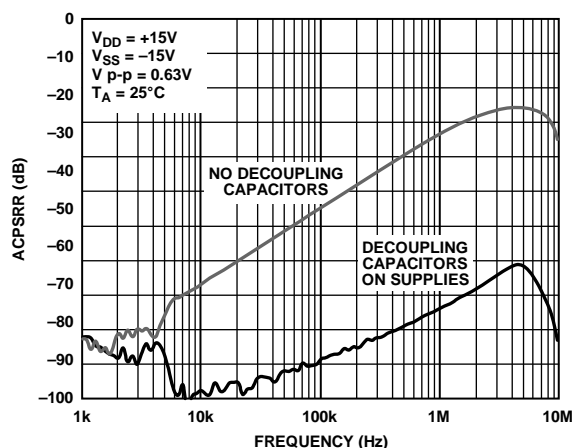


Figure 21. ACPSRR vs. Frequency

06815-017

TERMINOLOGY

I_{DD}

The positive supply current.

I_{SS}

The negative supply current.

V_D (V_S)

The analog voltage on Terminal D and Terminal S.

R_{ON}

The ohmic resistance between Terminal D and Terminal S.

R_{FLAT(ON)}

Flatness that is defined as the difference between the maximum and minimum value of on resistance measured over the specified analog signal range.

I_S (Off)

The source leakage current with the switch off.

I_D (Off)

The drain leakage current with the switch off.

I_D, I_S (On)

The channel leakage current with the switch on.

V_{INL}

The maximum input voltage for Logic 0.

V_{INH}

The minimum input voltage for Logic 1.

I_{INL} (I_{INH})

The input current of the digital input.

C_S (Off)

The off switch source capacitance, which is measured with reference to ground.

C_D (Off)

The off switch drain capacitance, which is measured with reference to ground.

C_D, C_S (On)

The on switch capacitance, which is measured with reference to ground.

C_{IN}

The digital input capacitance.

t_{TRANSITION}

The delay time between the 50% and 90% points of the digital input and switch on condition when switching from one address state to another.

t_{ON} (EN)

The delay between applying the digital control input and the output switching on. See Figure 29, Test Circuit 4.

t_{OFF} (EN)

The delay between applying the digital control input and the output switching off.

Charge Injection

A measure of the glitch impulse transferred from the digital input to the analog output during switching.

Off Isolation

A measure of unwanted signal coupling through an off switch.

Crosstalk

A measure of unwanted signal that is coupled through from one channel to another as a result of parasitic capacitance.

Bandwidth

The frequency at which the output is attenuated by 3 dB.

On Response

The frequency response of the on switch.

Insertion Loss

The loss due to the on resistance of the switch.

THD + N

The ratio of the harmonic amplitude plus noise of the signal to the fundamental.

ACPSRR (AC Power Supply Rejection Ratio)

The ratio of the amplitude of signal on the output to the amplitude of the modulation. This is a measure of the ability of the device to avoid coupling noise and spurious signals that appear on the supply voltage pin to the output of the switch. The dc voltage on the device is modulated by a sine wave of 0.62 V p-p.

TEST CIRCUITS

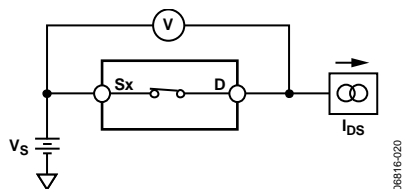


Figure 22. On Resistance

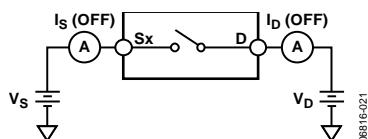


Figure 23. Off Leakage

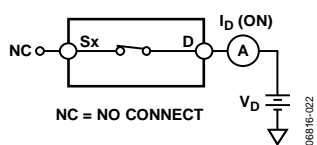


Figure 24. On Leakage

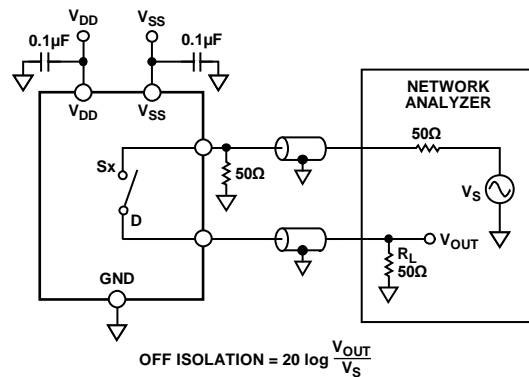


Figure 25. Off Isolation

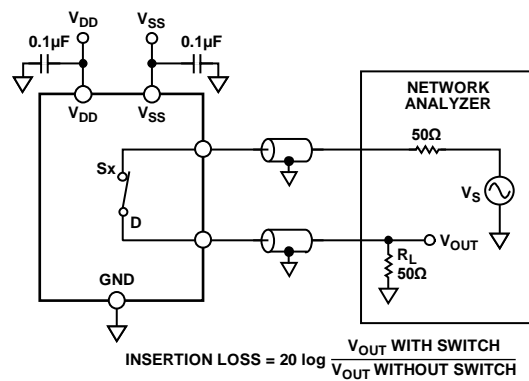


Figure 26. Bandwidth

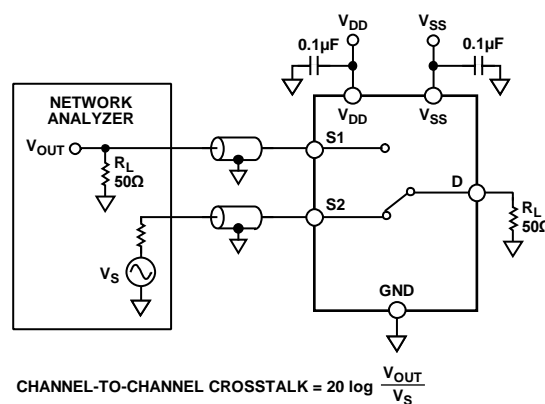


Figure 27. Channel-to-Channel Crosstalk

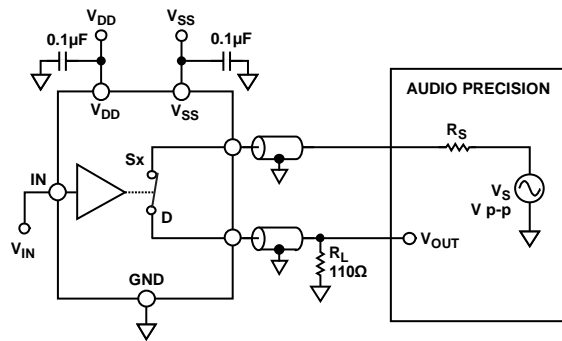


Figure 28. THD + Noise

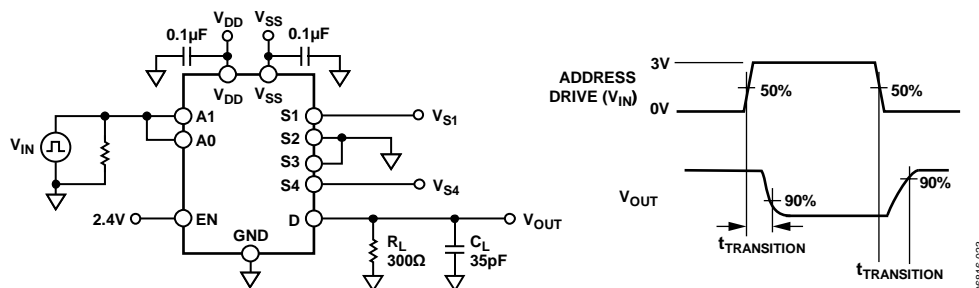


Figure 29. Address to Output Switching Times

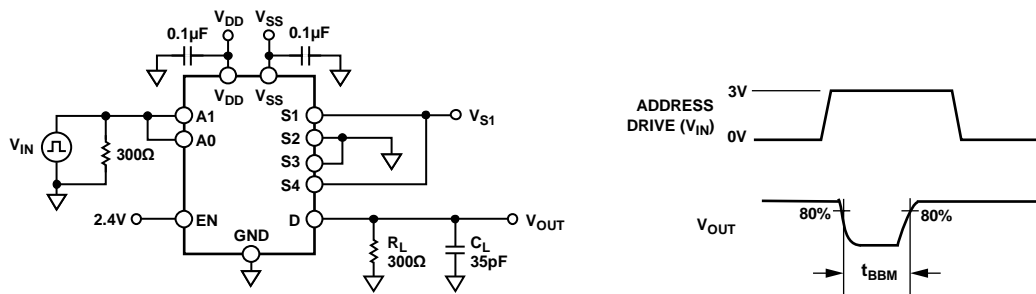


Figure 30. Break-Before-Make Time Delay

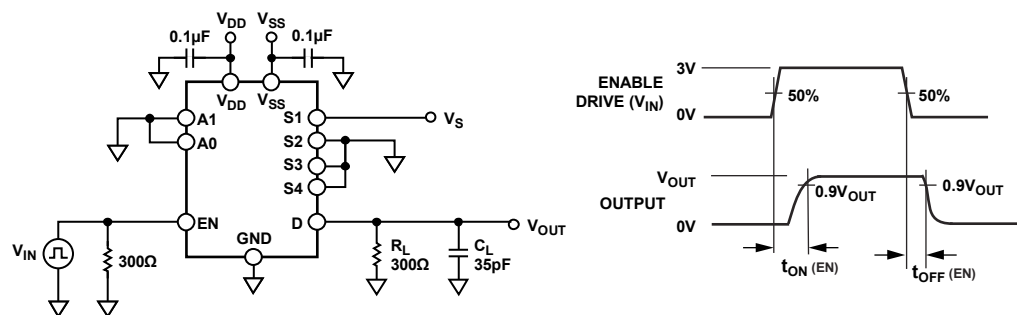


Figure 31. Enable-to-Output Switching Delay

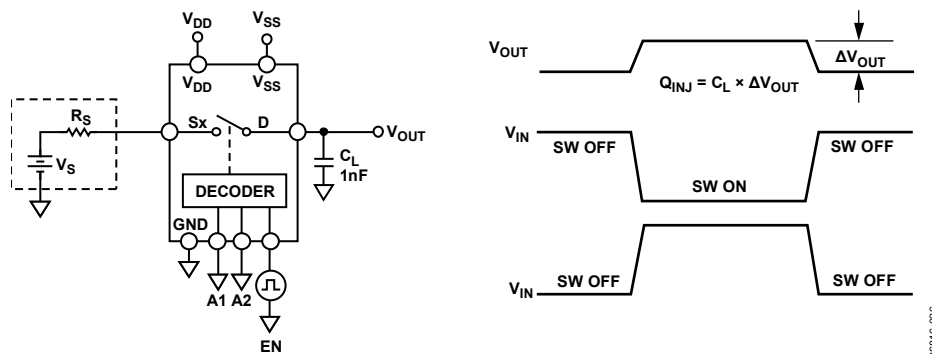


Figure 32. Charge Injection

OUTLINE DIMENSIONS

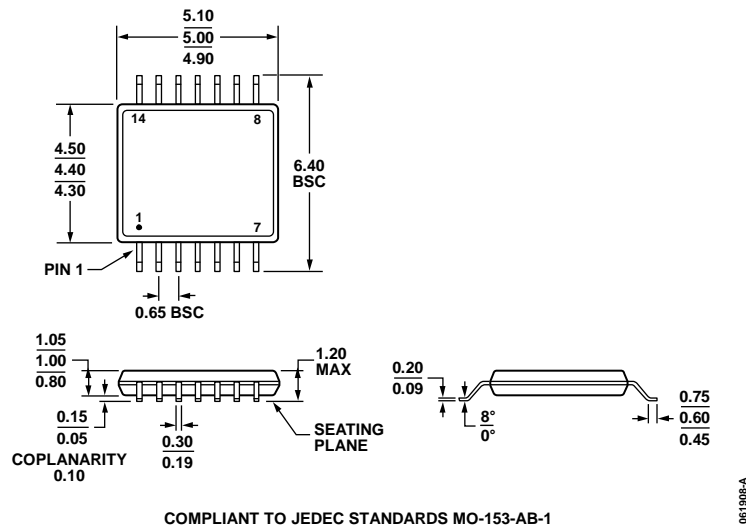


Figure 33. 14-Lead Thin Shrink Small Outline Package [TSSOP]
(RU-14)

Dimension shown in millimeters

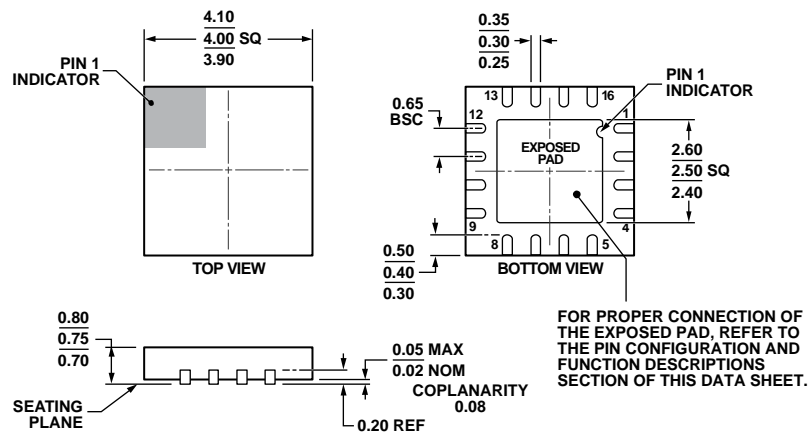


Figure 34. 16-Lead Lead Frame Chip Scale Package [LFCSP]
4 mm × 4 mm Body and 0.75 mm Package Height
(CP-16-26)

Dimensions shown in millimeters

ORDERING GUIDE

Model ¹	Temperature Range	Package Description	Package Option
ADG1404YRUZ	−40°C to +125°C	14-Lead Thin Shrink Small Outline Package [TSSOP]	RU-14
ADG1404YRUZ-REEL7	−40°C to +125°C	14-Lead Thin Shrink Small Outline Package [TSSOP]	RU-14
ADG1404YCPZ-REEL	−40°C to +125°C	16-Lead Lead Frame Chip Scale Package [LFCSP]	CP-16-26
ADG1404YCPZ-REEL7	−40°C to +125°C	16-Lead Lead Frame Chip Scale Package [LFCSP]	CP-16-26

¹ Z = RoHS Compliant Part.