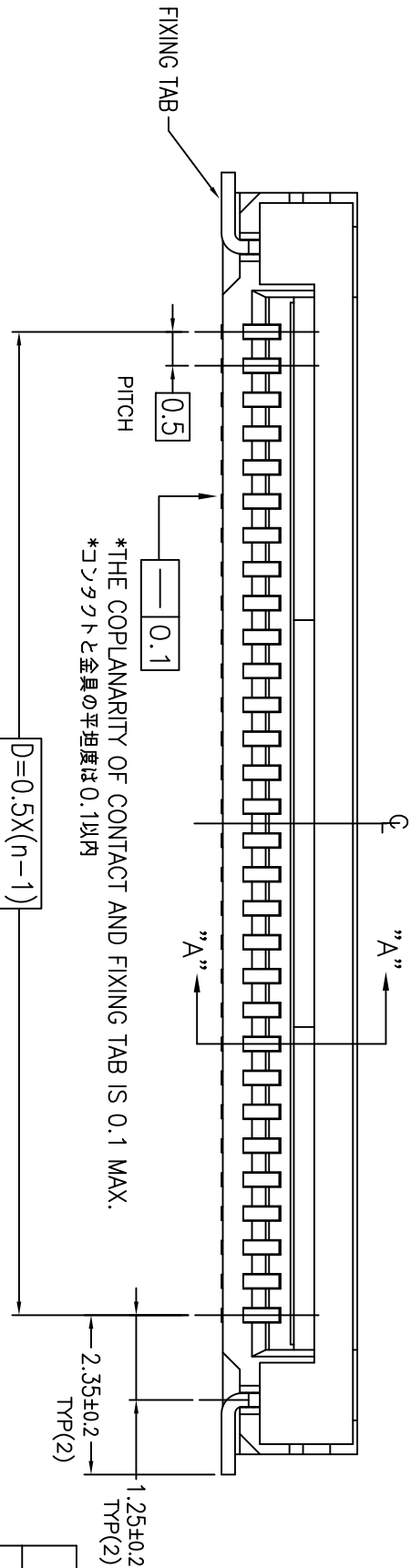
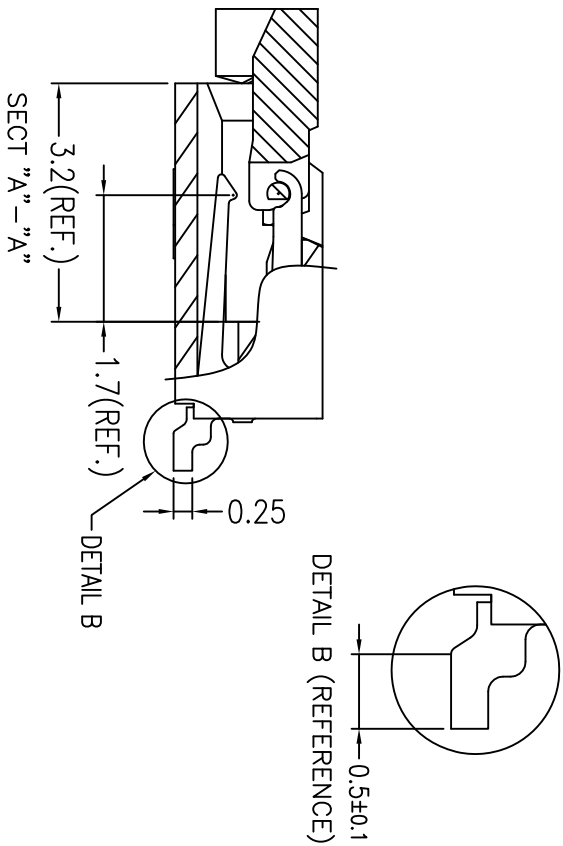
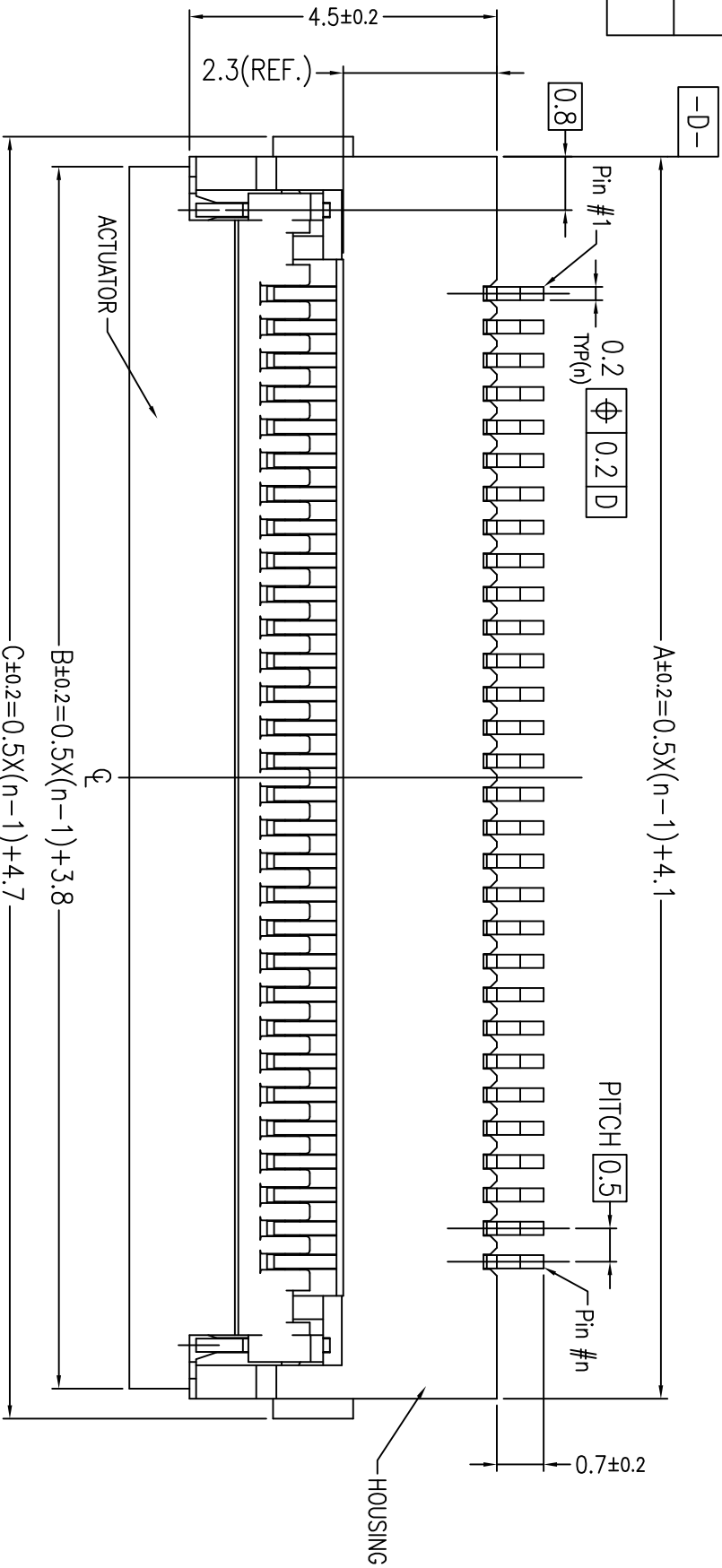


PRODUCT NO.
10085901-***1*LF




Amphenol
FCi

P/N	ACTUATOR COLOR	REMARK
-***1LF	NATURAL (BROWN)	STANDARD
-***1HLF	BLACK	HALOGEN FREE (less than 900ppm)

P/N	A	B	C	D	E
10085901-701HLF	38.6	38.3	39.2	34.5	40.3
10085901-701LF	38.6	38.3	39.2	34.5	40.3
10085901-601HLF	33.6	33.3	34.2	29.5	35.3
10085901-601LF	33.6	33.3	34.2	29.5	35.3
10085901-501HLF	28.6	28.3	29.2	24.5	30.3

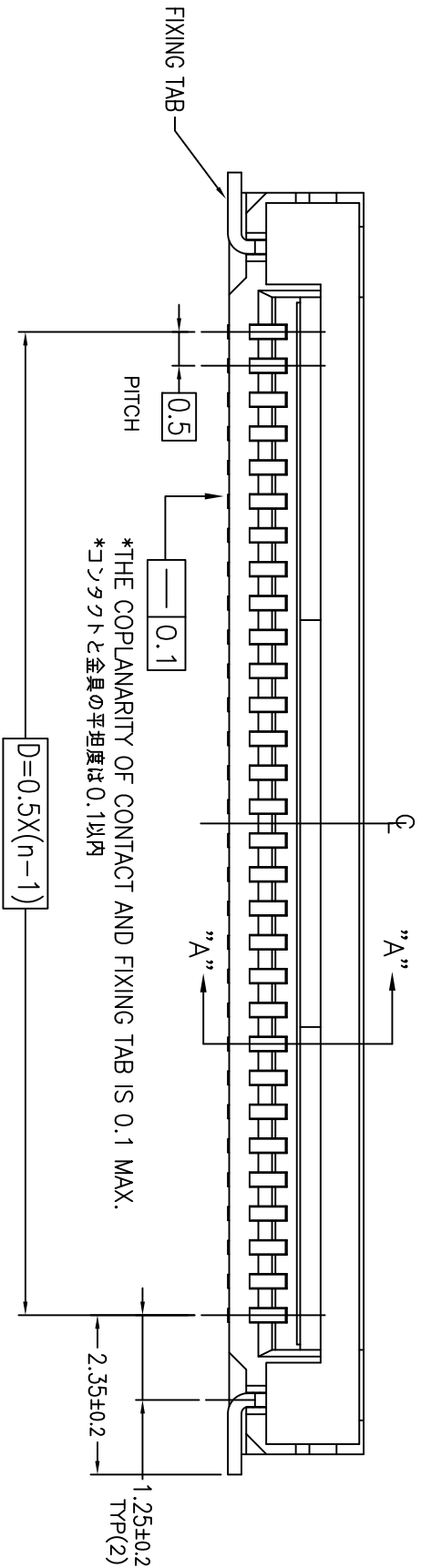
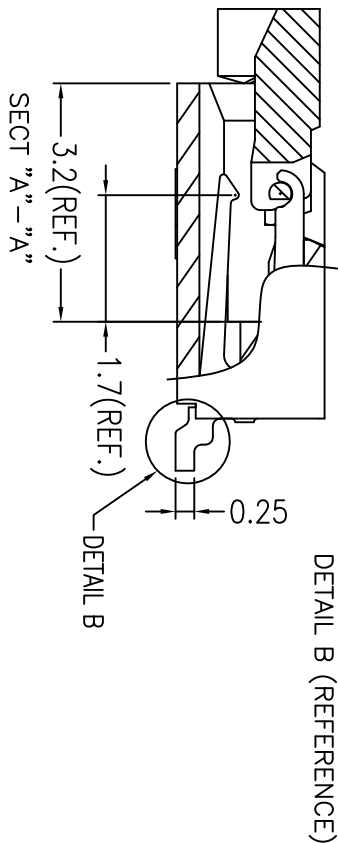
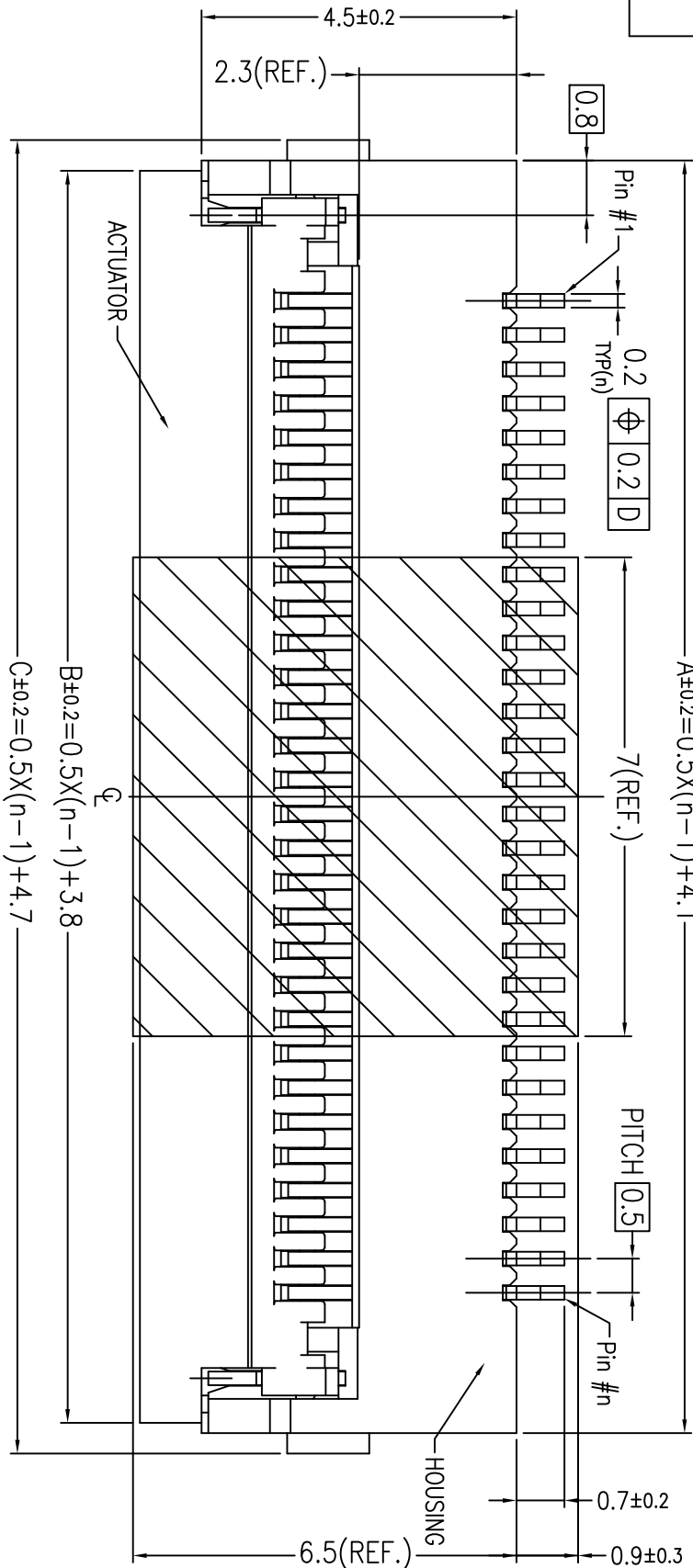
NOTE
1.MATERIAL
1)HOUSING:THERMOPLASTIC RESIN,UL94V-0, NATURAL
2)ACTUATOR:THERMOPLASTIC RESIN,UL94V-0, BROWN
3)CONTACT:COPPER ALLOY (t=0.20)
4)FIXING TAB: COPPER ALLOY (t=0.20)
2.FINISH
1)CONTACT: ALL OVER Ni,Au FLASH.
2)FIXING TAB: ALL OVER Ni, Sn PLATING 1.5~3.5μm
3.CO-PLANARITY: 0.1 MAX.
5.ROHS
THIS PRODUCT MEETS EUROPEAN UNION DIRECTIVES AND OTHER COUNTRY REGULATIONSAS DESCRIBED IN GS-47-0004.

注記
1.材料
1)ハウジング:耐熱性樹脂,UL94V-0,ナチュラル
2)アクチュエータ:耐熱性樹脂,UL94V-0,茶色
3)端子:銅合金 (t=0.20)
4)固定金具:銅合金 (t=0.20)
2.めっき
1)端子: Ni下地付き, Auプラグ
2)固定金具: Ni下地付き, 鍍めつき 1.5~3.5μm
3)コプラナリティ: 0.1 MAX.
5.ROHS
本製品は、GS-47-0004に記載されたヨーロッパ適合指令と他国の規制に適合しています。

mat'l. code					surface		tolerance		<div>projection</div> <div></div>	product family		
ltr	ecn	no	dr	date	ISO 1302	✓	ISO 406	ISO 1101		59KF FLEX 0.5		
K					tolerances unless otherwise specified					title ASSEMBLY 0.5mm PITCH CONNECTOR FOR FPC VHC Series		
					angles		0.X/±0.2					
					linear		0.XX/±0.2					
					0°±2°		0.XXX/±0.2			scale 10:1		
					dr	Y.KAMEDA		2019-03-25		dwg no sheet 2 of 8 size		
					engr	Y.KAMEDA		2019-03-25				
					chr	S-H.THIO		2019-03-25				
					appd	N.SASAME		2019-03-25		type CUSTOMER Drawing		
sheet index	revision		sheet									



PRODUCT NO.
10085901-7021LF



Amphenol
FCi

2016 AFCL



- NOTE
- 1.MATERIAL
- 1)HOUSING:THERMOPLASTIC RESIN,UL94V-0, NATURAL
- 2)ACTUATOR:THERMOPLASTIC RESIN,UL94V-0, BROWN
- 3)CONTACT:COPPER ALLOY (t=0.20)
- 4)FIXING TAB: COPPER ALLOY (t=0.20)
- 5)COVER TAPE: POLYIMIDE TAPE (t=0.075)
- 2.FINISH
- 1)CONTACT: ALL OVER Ni,Au FLASH.
- 2)FIXING TAB: ALL OVER Ni, Sn PLATING 1.5~3.5μm
- 3.CO-PLANARITY: 0.1 MAX.
- 5.RoHS
- THIS PRODUCT MEETS EUROPEAN UNION DIRECTIVES AND OTHER COUNTRY REGULATIONSAS DESCRIBED IN GS-22-008.

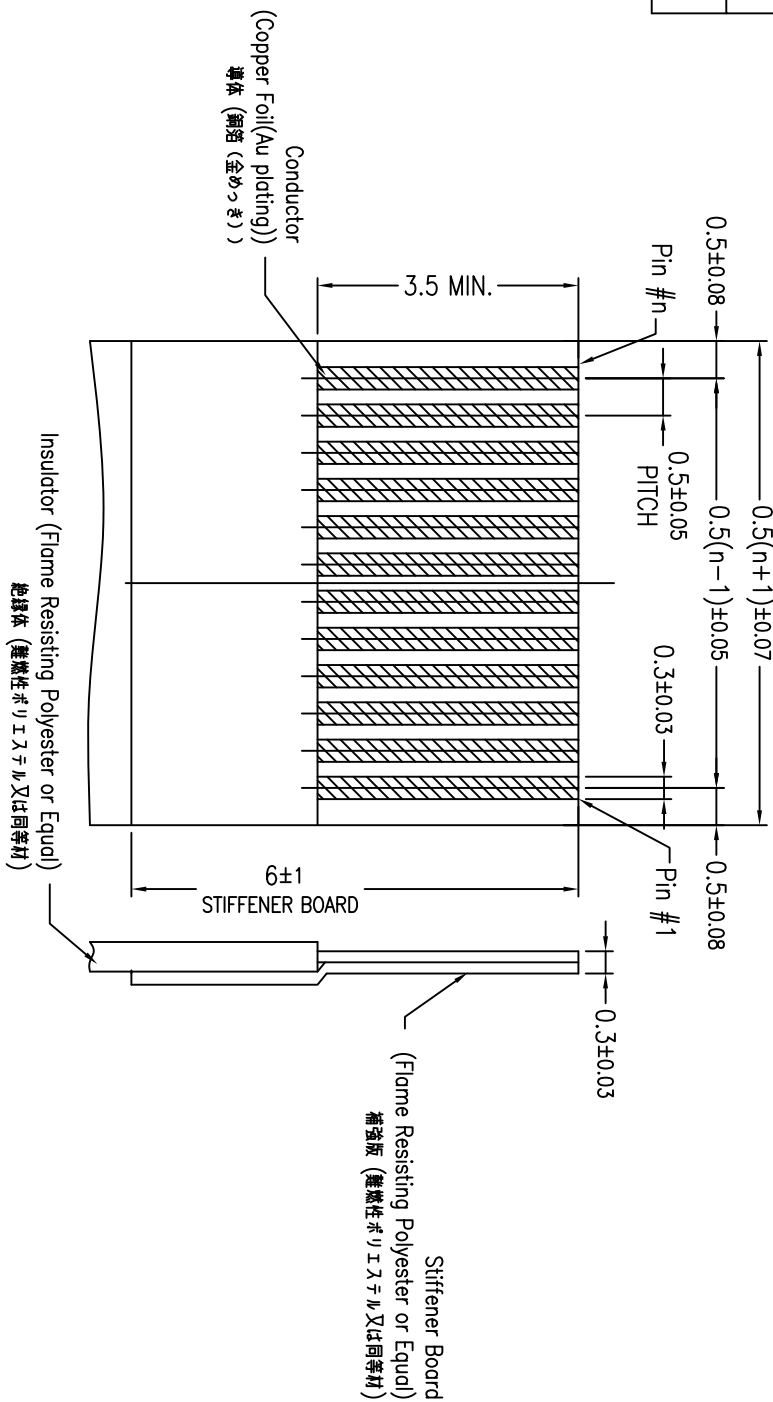
- 注記
- 1.材料
- 1)ハウジング:耐熱性樹脂,UL94V-0,ナチュラル
- 2)アクチュエータ:耐熱性樹脂,UL94V-0,茶色
- 3)端子:銅合金 (t=0.20)
- 4)固定金具:銅合金 (t=0.20)
- 5)吸着テープ:ポリイミドテープ (t=0.075)
- 2.めっき
- 1)端子: Ni下地付き, Auフラッシュ
- 2)固定金具: Ni下地付き, 錫めっき 1.5~3.5μm
- 3)コネクタリテラ: 0.1 MAX.
- 5.RoHS
- 本製品は、GS-22-008に記載されたヨーロッパ連合指令と他国の規制に適合しています。

mat'l. code				surface	✓	tolerance			projection	product family		
				ISO 1302		ISO 406	ISO 1101		59KF FLEX 0.5			
ltr	ecm	no	dr	date	tolerances unless otherwise specified					title		
K					angles	linear	0.X/±0.2	ASSEMBLY				
							0.XX/±0.2	0.5mm PITCH CONNECTOR FOR FPC				
					0°±2°		0.XXX/±0.2	scale 10:1	VHC Series			
					dr	Y.KAMEDA	2019-03-25		dwg no		sheet 3 of 8	size
					engr	Y.KAMEDA	2019-03-25		10085901		A3	
					chr	S-H.THIO	2019-03-25					
					appd	N.SASAME	2019-03-25		type		CUSTOMER Drawing	
sheet index	revision		sheet									

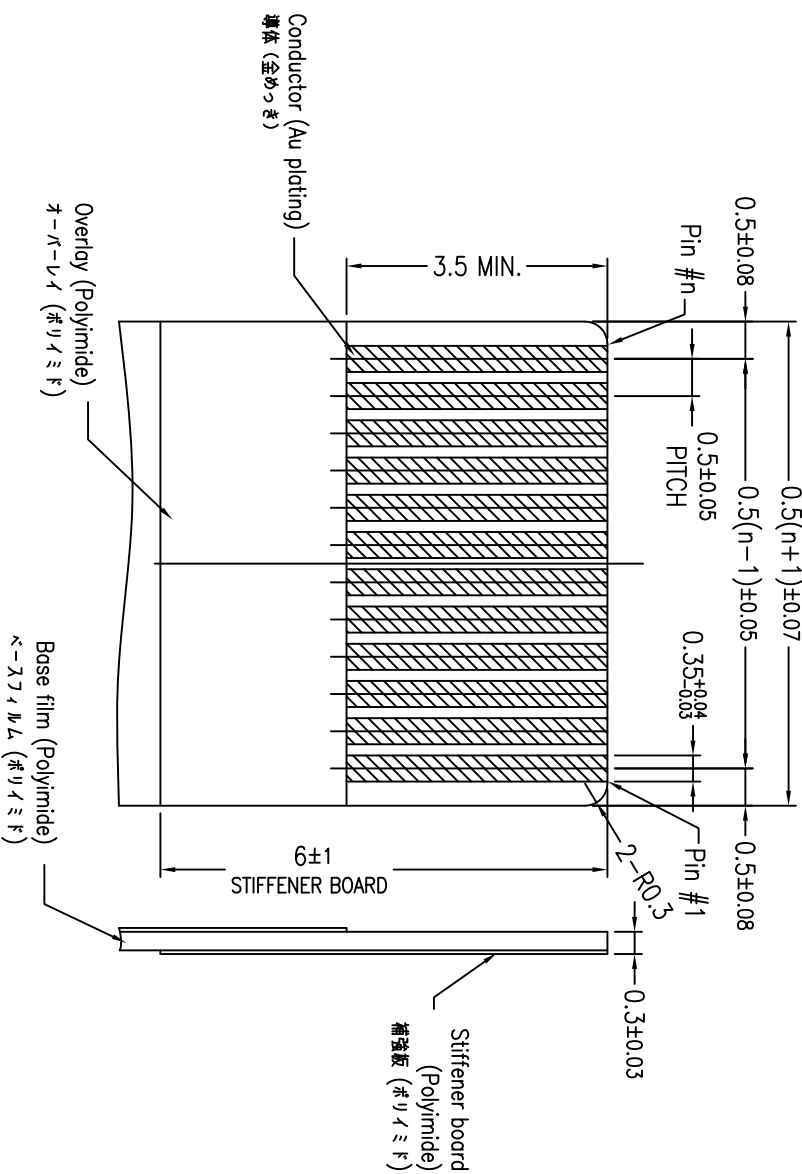
PDS: Rev :K

STATUS:Released

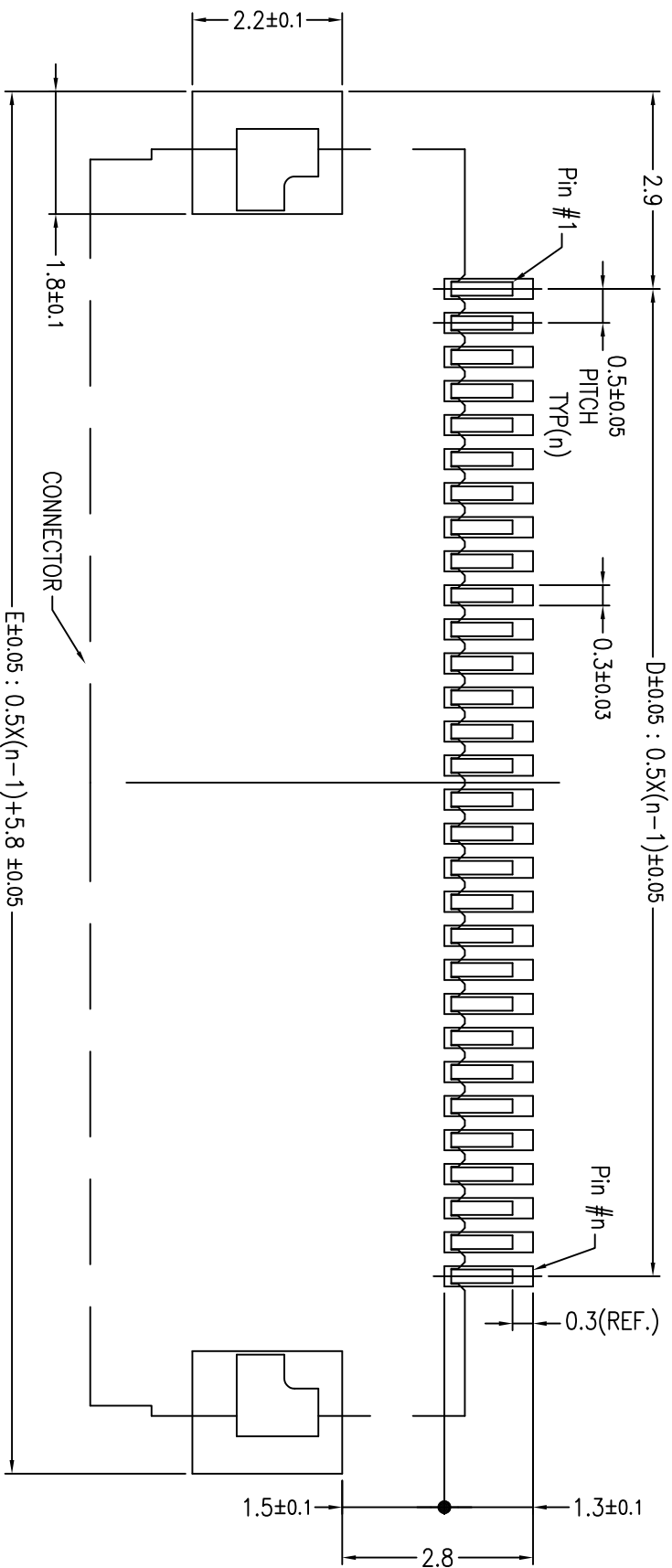
Printed: Mar 25, 2019



RECOMMENDED FFC CONFIGURATION



RECOMMENDED FPC CONFIGURATION



RECOMMENDED PC BOARD LAYOUT

10085901-701HLF	38.6	38.3	39.2	34.5	40.3	
10085901-701LF	38.6	38.3	39.2	34.5	40.3	
10085901-7021LF	38.6	38.3	39.2	34.5	40.3	
10085901-601HLF	33.6	33.3	34.2	29.5	35.3	
10085901-601LF	33.6	33.3	34.2	29.5	35.3	
10085901-501HLF	28.6	28.3	29.2	24.5	30.3	
D/N	A	B	C	D	E	

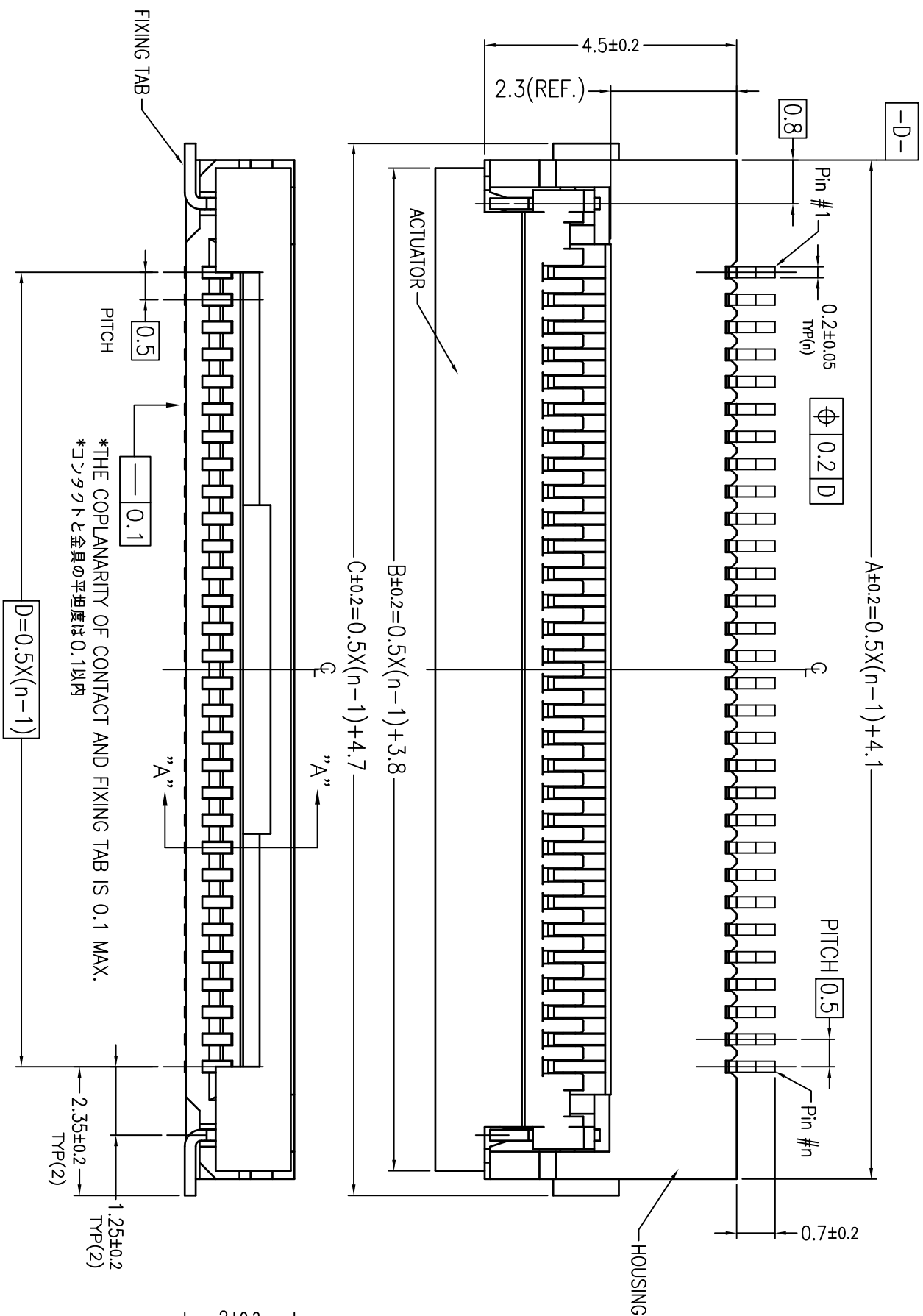
NOTE

1. THICKNESS OF A METAL MASK: 0.1mm
2. FPC / FFC
- ADHESIVE METHOD OF SUPPORTING TAPE SHALL BE HEAT CRIMPING METHOD AND THERMOSETTING ADHESIVE MATERIAL SHALL BE USED.
3. OTHER SPECIFICATIONS
- PRODUCT SPECIFICATION : GS-12-541
- APPLICATION SPECIFICATION : GS-20-105
- PACKAGING SPECIFICATION : GS-14-1264

注記

1. ジェタルマックス 厚 : 0.1mm
2. FPC / FFC
FPCの補強板・接着剤には熱硬化接着剤を使用し、
接着方式は熱圧着とする。
3. その他
- | | |
|---------|--------------|
| 製品規格 | : GS-12-541 |
| 取り扱い説明書 | : GS-20-105 |
| 梱包規格 | : GS-14-1264 |

mat'l. code		surface		tolerance		projection		product family	
		ISO 1302		✓		ISO 406 ISO 1101		59KF FLEX 0.5	
ltr	ecn no	dr	date		tolerances unless otherwise specified		title		
K			angles		linear		ASSEMBLY		
					0.X/±0.2		0.5mm PITCH CONNECTOR FOR FPC		
					0.XX/±0.2		VHC Series		
			0°±2°		0.XXX/±0.2		scale 10:1		
			dr		Y.KAMEDA		dwg no		
					2019-03-25		sheet 4 of 8		
			enqr		Y.KAMEDA		10085901		
					2019-03-25		size		
			chr		S-H.THIO		A3		
					2019-03-25				
			apppd		N.SASAME		type		
					2019-03-25		CUSTOMER Drawing		
sheet index	revision sheet								



P/N	ACTUATOR COLOR	REMARK
-**11LF	NATURAL (BROWN)	STANDARD
-**11HLF	BLACK	HALOGEN FREE (less than 900ppm)

NOTE

1. MATERIAL

1)HOUSING:THERMOPLASTIC RESIN,UL94V-0, NATURAL

2)ACTUATOR:THERMOPLASTIC RESIN,UL94V-0, BROWN

3) CONTACT: COPPER ALLOY (t=0.20)

4)FIXING TAB: COPPER ALLOY (t=0.20)

2. FINISH

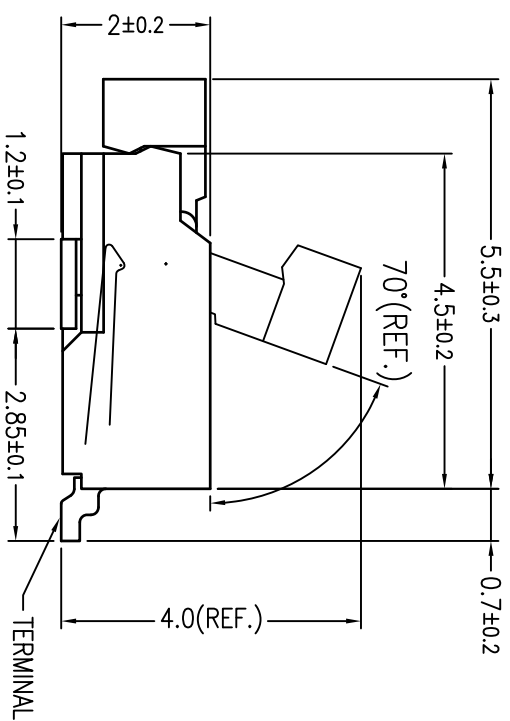
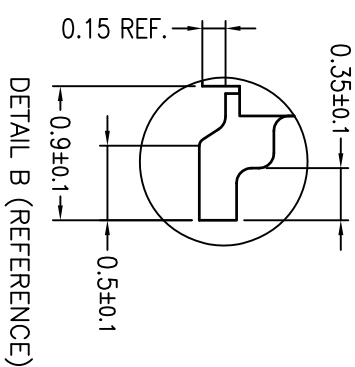
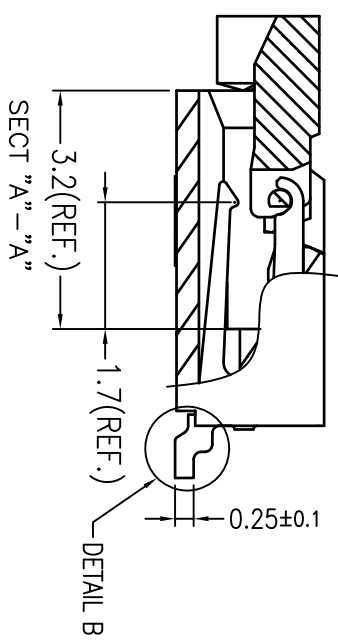
1)CONTACT: ALL OVER Ni,Au FLASH.

2)FIXING TAB: ALL OVER Ni, Sn PLATING 1.5~3.5μm



3.CO-PLANARITY: 0.1 MAX.

5. RoHS

THIS PRODUCT MEETS EUROPEAN UNION DIRECTIVES AND OTHER
COUNTRY REGULATIONS AS DESCRIBED IN GS-22-008

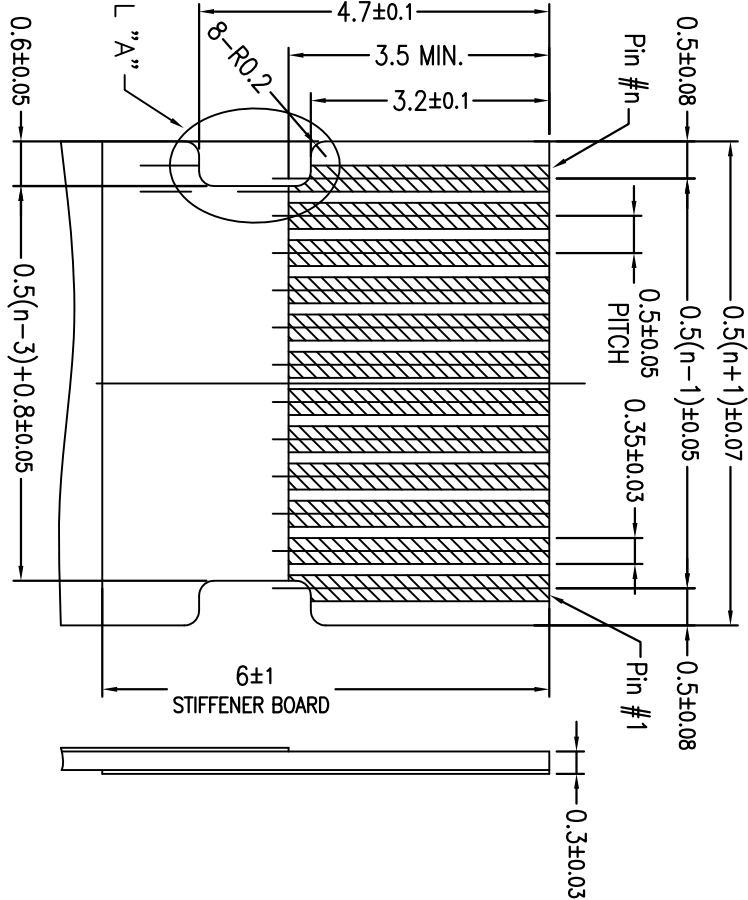
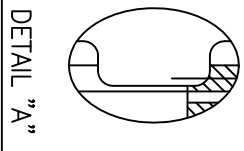


10085901-7011LF	38.6	38.3	39.2	34.5	40.3	
10085901-6011LF	33.6	33.3	34.2	29.5	35.3	
10085901-6011HLF	33.6	33.3	34.2	29.5	35.3	
10085901-5011LF	28.6	28.3	29.2	24.5	30.3	
10085901-5011HLF	28.6	28.3	29.2	24.5	30.3	
10085901-3511LF	21.1	20.8	21.7	17.0	22.8	

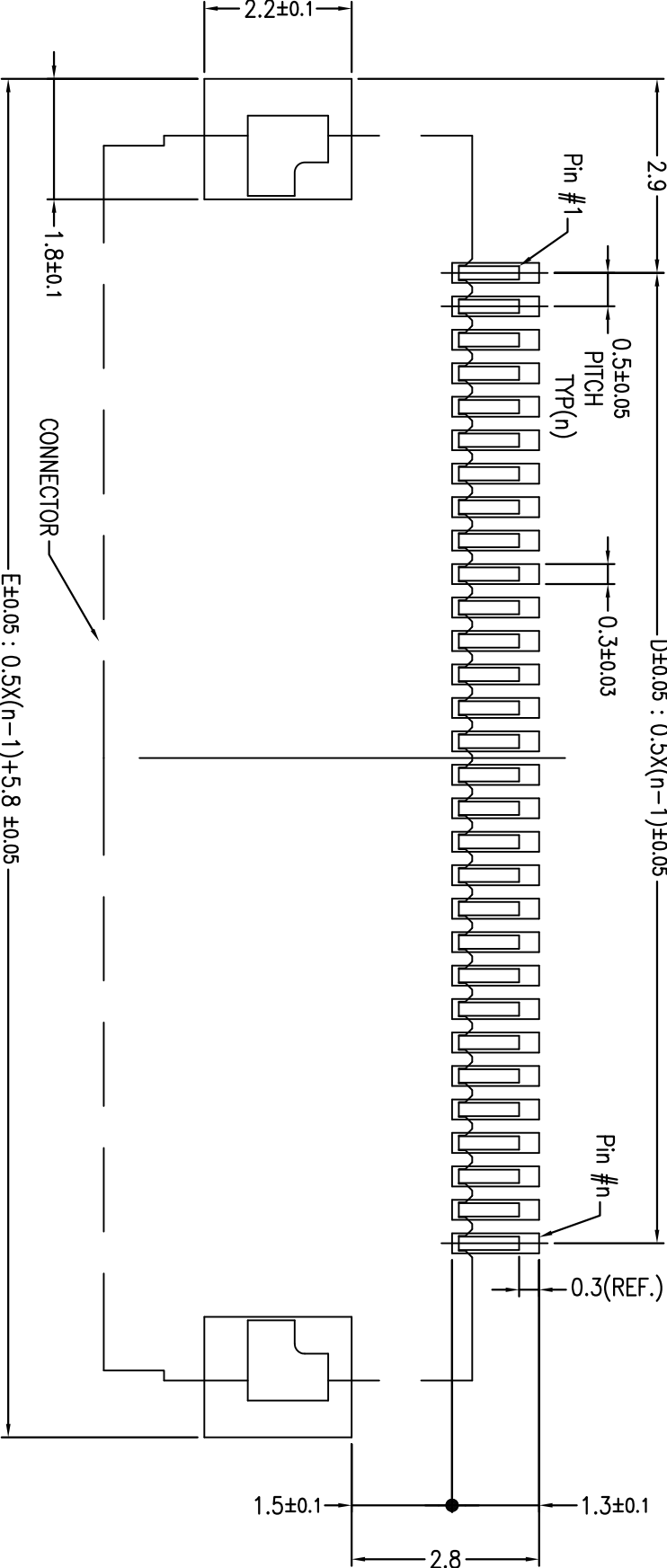
mat'l. code				surface		tolerance		projection		product family					
				ISO 1302		✓ ISO 406 ISO 1101				59KF FLEX 0.5					
lthr	ecn no	dr	date		tolerances unless otherwise specified						title				
K					angles		0.X/±0.2		 MM		ASSEMBLY 0.5mm PITCH CONNECTOR FOR FPC VHC Series				
					linear		0.XX/±0.2								
					0°±2'		0.XXX/±0.2		scale 10:1						
					dr		Y.KAMEDA				dwg no				
					engr		Y.KAMEDA				sheet 5 of 8				
					chr		S-H.THIO				size				
					appd		N.SASAME				A3				
sheet index				revision sheet								CUSTOMER Drawing			

PRODUCT NO.
10085901-**-1*LF

Cut through both sides conductors.



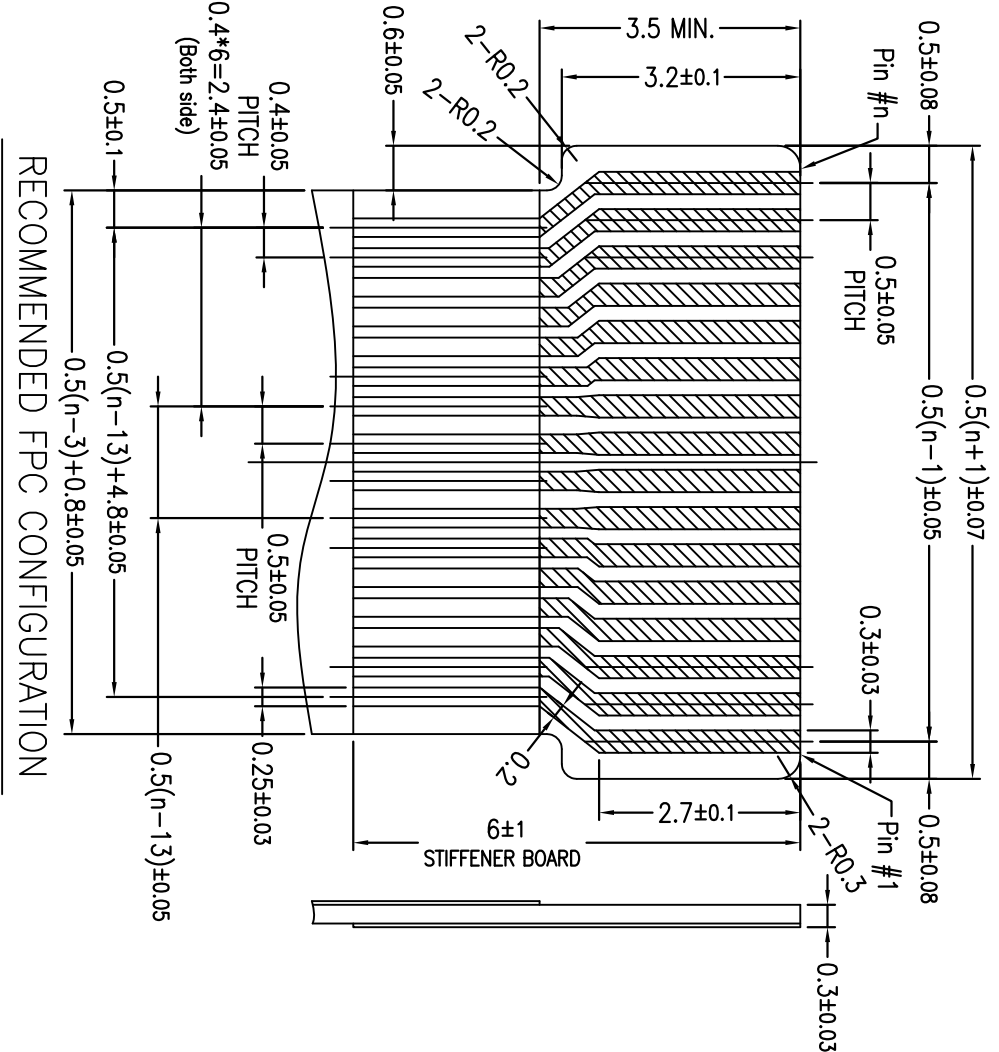
RECOMMENDED FFC CONFIGURATION



RECOMMENDED PC BOARD LAYOUT

NOTE
1.THICKNESS OF A METAL MASK: 0.1mm
2.FPC / FFC
ADHESIVE METHOD OF SUPPORTING TAPE SHALL BE HEAT CRIMPING
METHOD AND THERMOSETTING ADHESIVE MATERIAL SHALL BE USED.
3.ACCORDING TO THE KIND OF CABLE TO BE USED, SINCE OUTSIDE TWO CONDUCTORS CANNOT BE USED,
THE LINE OF SIGNAL DECREASES.

注記
1.メタルマスク厚 : 0.1mm
2.FPC / FFC
FPCの補強板接着剤には熱硬化接着剤を使用し、接着方式は熱圧着とする。
3.使用するケーブルの種類によっては、外側の2つの導体不能使用になるため信号ラインが減少します。

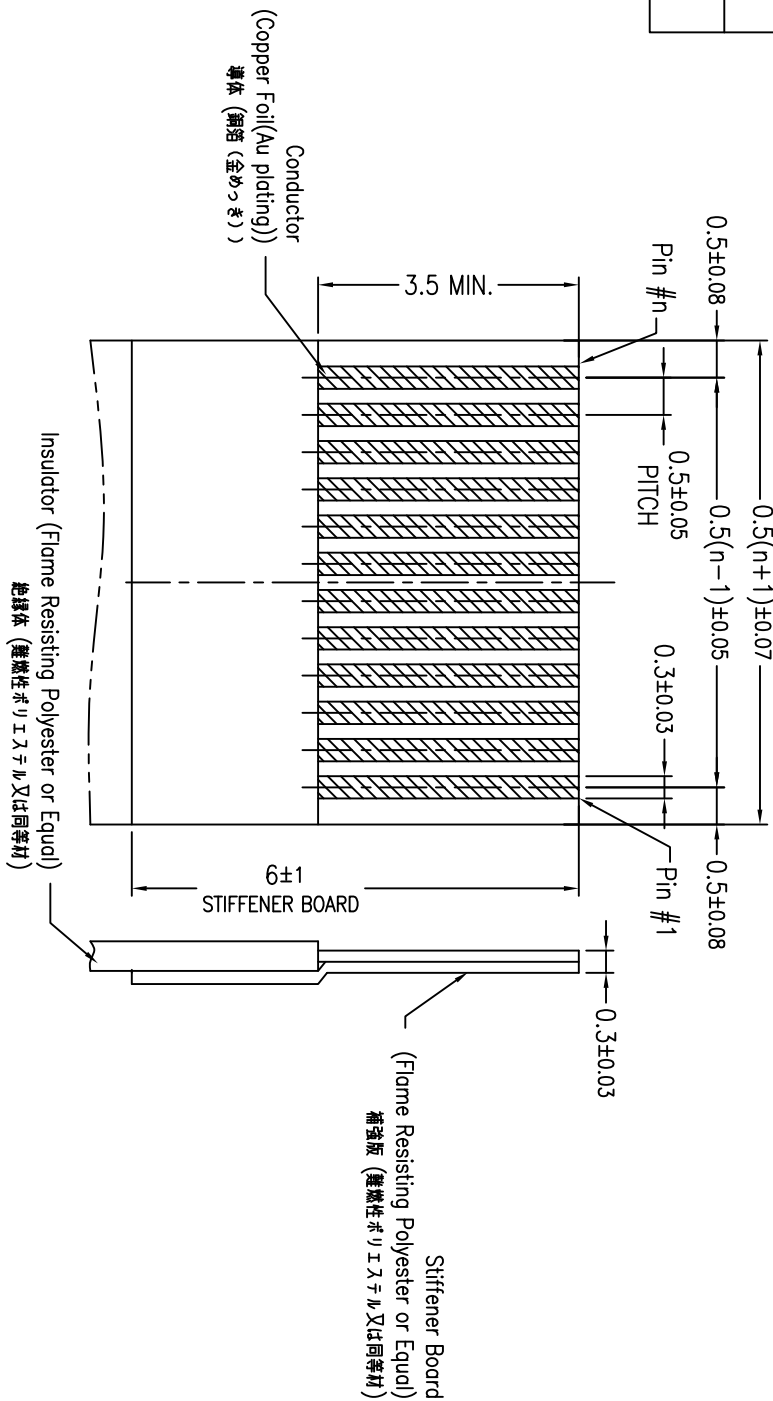


RECOMMENDED FPC CONFIGURATION

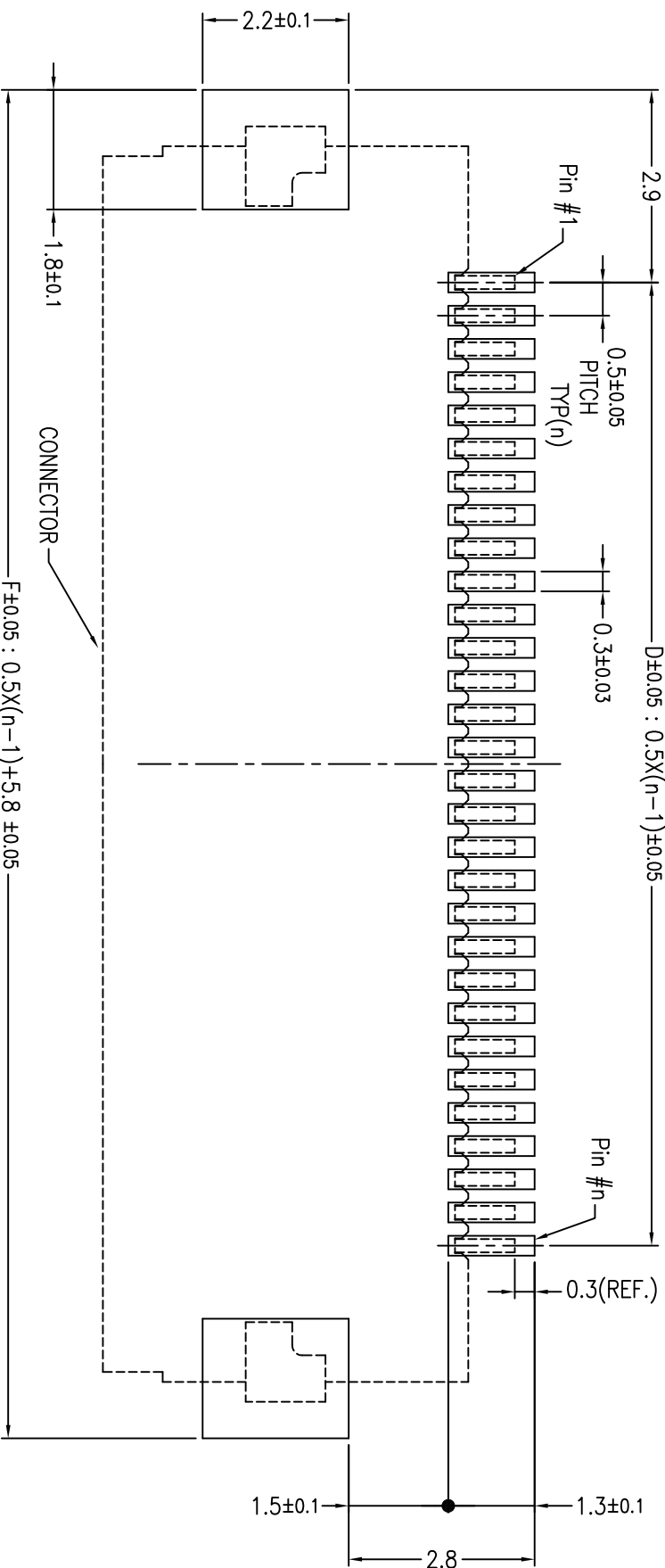
10085901-7011LF	38.6	38.3	39.2	34.5	40.3	
10085901-6011LF	33.6	33.3	34.2	29.5	35.3	
10085901-6011HLF	33.6	33.3	34.2	29.5	35.3	
10085901-5011LF	28.6	28.3	29.2	24.5	30.3	
10085901-5011HLF	28.6	28.3	29.2	24.5	30.3	
10085901-3511LF	21.1	20.8	21.7	17.0	22.8	

mat'l. code			surface			tolerance			projection			product family		
ltr	ecn no	dr	date			ISO 1302	ISO 406	ISO 1101				59KF FLEX 0.5		
K						tolerances unless otherwise specified			MM			ASSEMBLY		
						angles	linear	0.X/±0.2				0.5mm PITCH CONNECTOR FOR FPC		
						0°±2°	0.XXX/±0.2	scale 10:1				VHC Series		
						dr	Y.KAMEDA	2019-03-25				dwg no	sheet 6 of 8	size
						engr	Y.KAMEDA	2019-03-25				10085901		
						chr	S-H.THO	2019-03-25				A3		
						appd	N.SASAME	2019-03-25				CUSTOMER Drawing		
sheet	revision													
index	sheet													

PRODUCT NO.
10085901 - **DHLF



RECOMMENDED FFC CONFIGURATION



NOTE
1. THICKNESS OF A METAL MASK: 0.1mm
2. FPC / FFC
ADHESIVE METHOD OF SUPPORTING TAPE SHALL BE HEAT CRIMPING
METHOD AND THERMOSETTING ADHESIVE MATERIAL SHALL BE USED.

注記

1. ギタルマスク厚 : 0.1mm

2. FPC / FFC

FPCの補強板接着剤には熱硬化接着剤を使用し、接着方式は熱圧着とする。

10085901-50DHLF	28.6	28.3	29.2	24.5	25.52	30.3

[illegible]

Technical drawing of a PCB assembly showing dimensions and materials.

Dimensions:

- Top edge: 0.5 ± 0.08
- Right edge (total): $0.5(n+1) \pm 0.07$
- Right edge (middle): $0.5(n-1) \pm 0.05$
- Right edge (bottom): 0.5 ± 0.08
- Internal spacing: 0.5 ± 0.05 PITCH
- Internal spacing: 0.35 ± 0.04
- Bottom edge (total): 6 ± 1
- Bottom edge (corner): $2-R0.3$
- Bottom edge (width): 0.3 ± 0.03
- Central hatched area width: 3.5 MIN.

Materials:

- Overlay (Polyimide)
- Base film (Polyimide)
- Stiffener board (Polyimide)

RECOMMENDED FPC CONFIGURATION