

**T92 Series Two-pole 30A PCB or Panel Mount Relay (Continued)**

**Coil versions, AC coil (A type) (continued)**

Coil code	Rated voltage VAC	Frequency Hz	Operate voltage VAC, 60Hz	Release voltage VAC, 60Hz	Coil resistance $\Omega \pm 10\%$	Rated coil power VA
12	12	60	9.6	1.2	9.1	4
24	24	60	19.2	2.4	36.6	4
110	110	60	88	11	793	4
120	110/120	50/60	96	12	950	4
208	208	60	166.4	20.8	2841	4
240	220/240	50/60	192	24	3800	4
277	250/277	50/60	221.6	27.7	5485	4

**Coil versions, AC coil (F type)**

Coil code	Rated voltage VAC	Frequency Hz	Operate voltage VAC, 60Hz	Release voltage VAC, 60Hz	Coil resistance $\Omega \pm 10\%$	Rated coil power VA
12	12	50	9.6	1.2	11.2	3.5
24	24	50	19.2	2.4	44.4	3.5
48	48	50	38.4	4.8	179.2	3.5
240	240	50	192	24	4355	3.5

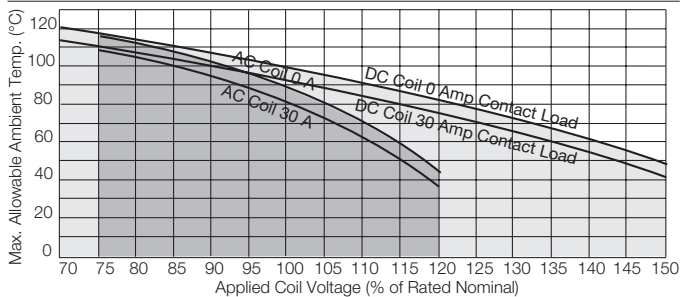
All figures are given for coil without preenergization, at ambient temperature +23°C. For A type, 110V/120V, 50/60Hz. Signify 50Hz Operation at Nominal 110V, 60 Hz Operation at Nominal 120V.

**Coil Data (continued)**

**Ambient temperature vs. coil voltage**

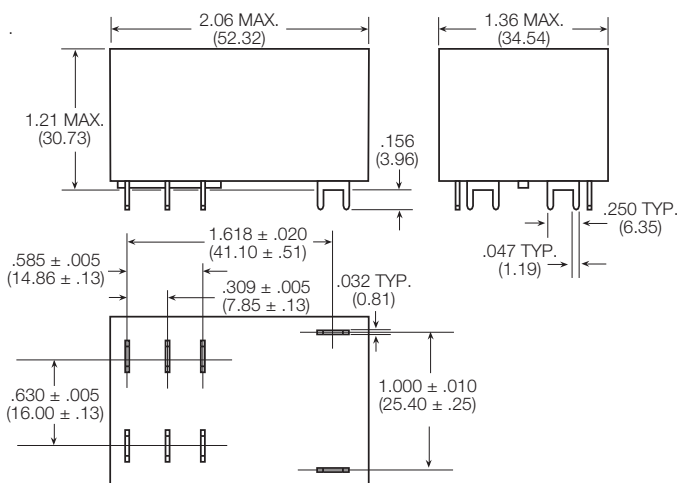
Assumptions:

1. Thermal resistance = 35°C per Watt (DC only.)
2. Still air.
3. Nominal coil resistance.
4. Max. mean coil temperature = 155°C (change of resistance method).
5. Coil temperature rise due to load = 6.3°C @ 30 amps.
6. Curves are based on 1.7W at 25°C (DC only.)



**Dimensions**

T92 – Mounting and termination code 1



**Insulation Data**

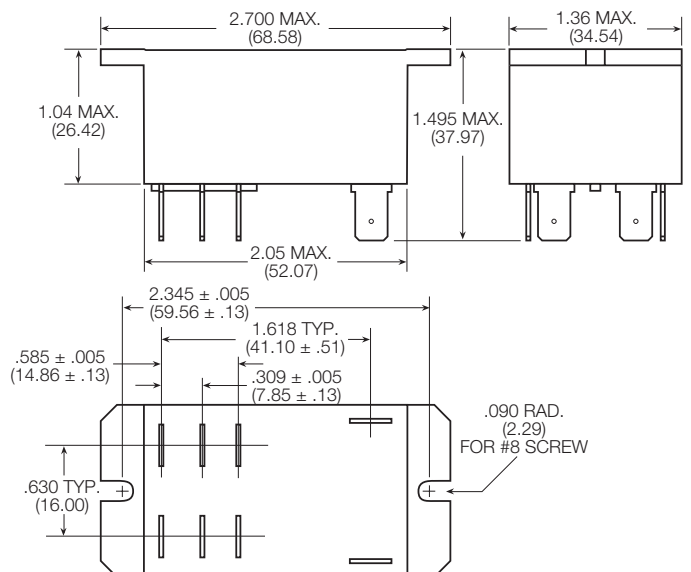
Initial dielectric strength	
between open contacts	1500V <sub>rms</sub>
between contact and coil	4000V <sub>rms</sub>
between adjacent contact	2000V <sub>rms</sub>
Initial surge withstand voltage	
between contact and coil	8kV
Initial insulation resistance	
between insulated elements	1x10 <sup>9</sup> Ω
Clearance/creepage	
between contact and coil	8mm clearance/9.5mm creepage

**Other Data**

Material compliance: EU RoHS/ELV, China RoHS, REACH, Halogen content refer to the Product Compliance Support Center at [www.te.com/customer-support/rohssupportcenter](http://www.te.com/customer-support/rohssupportcenter)

Ambient temperature	
DC coil	-55°C to 85°C
AC coil	-55°C to 65°C
Category of environmental protection	
IEC 61810	RTI - dust protected, RTII - flux proof, RTIII - wash tight
Vibration resistance (functional)	1.65mm max excursions, 10-55 Hz
Shock resistance (functional)	10g for 11msec
Shock resistance (destructive)	100g
Terminal type	PCB-tht or quick connect
Weight	86g
Resistance to soldering heat THT	
IEC 60068-2-20	260°C
Packaging/unit	tray/30 pcs., box/120 pcs.

T92 – Mounting and termination code 2, 3 and 4





**T92 Series Two-pole 30A PCB or Panel Mount Relay (Continued)**

Product Code	Enclosure	Contacts	Coil	Mounting	Contact Material	Coil	Part Number		
T92P7A22-24	Plastic dust cover	2 form A, 2 NO	AC	Panel mount + quick connect	AgCdO	24 VAC	6-1393211-0		
T92P7A22-120						120 VAC	5-1393211-7		
T92P7A22-240						240 VAC	6-1393211-2		
T92P7A22-277						277 VAC	6-1393211-3		
T92P7A24-240				Panel mount + screw terminals	AgSnOInO	240 VAC	3-1423008-3		
T92P7A52-120					AgCdO	120 VAC	1423008-8		
T92P7A52-240						240 VAC	1-1423008-2		
T92P7D12-12							DC	PCB terminals	
T92P7D12-24	24 VDC	6-1393211-6							
T92P7D22-12	Panel mount + quick connect	12VDC	6-1393211-9						
T92P7D22-24		24 VDC	7-1393211-1						
T92P7D22-48		48 VDC	7-1393211-2						
T92P7D24-12					AgSnOInO	12VDC	2-1423008-2		
T92P7D24-24						24 VDC	1423008-9		
T92P7D42-24					AgCdO		7-1393211-5		
T92P7D52-12						12 VDC	1-1423008-0		
T92P7D52-24				Panel mount + screw terminals		24 VDC	1423967-1		
T92P11A12-120						2 form C, 2 CO	AC	120 VAC	3-1393211-8
T92P11A22-12								12 VAC	3-1393211-9
T92P11A22-24								24 VAC	4-1393211-3
T92P11A22-120	120 VAC	4-1393211-0							
T92P11A22-240	240 VAC	4-1393211-4							
T92P11A22-277	277 VAC	4-1393211-6							
T92P11A24-240	AgSnOInO	240 VAC	3-1423008-7						
T92P11A42-120	AgCdO	120VAC	4-1393211-8						
T92P11D12-12			DC	PCB terminals		12 VDC	5-1393211-0		
T92P11D22-12				Panel mount + quick connect			5-1393211-3		
T92P11D22-24				AgSnOInO		24 VDC	5-1393211-4		
T92P11D24-12						12 VDC	3-1423008-5		
T92P11D24-24						24 VDC	3-1423008-6		
T92S7A12-24	Wash tight	2 form A, 2 NO	AC	PCB terminals	AgCdO	24 VAC	9-1393211-8		
T92S7A12-120						120 VAC	9-1393211-7		
T92S7A12-240						240 VAC	9-1393211-9		
T92S7A22-24						Top sealed			Panel mount + quick connect
T92S7A22-120	120 VAC	1393212-2							
T92S7A22-240	240 VAC	1393212-5							
T92S7D12-12	Wash tight		DC	PCB terminals					
T92S7D12-24						24 VDC	1-1393212-0		
T92S7D12-48						48 VDC	1-1393212-1		
T92S7D12-110						110 VDC	1393212-7		
T92S7D14-24						AgSnOInO	24 VDC	1-1423008-8	
T92S7D22-12	Top sealed			Panel mount + quick connect	AgCdO	12 VDC	1-1393212-4		
T92S7D22-18						18 VDC	1-1393212-5		
T92S7D22-24						24 VDC	1-1393212-7		
T92S7D22-110						110 VDC	1-1393212-3		
T92S11A12-24	Wash tight	2 form C, 2 CO	AC	PCB terminals		24 VAC	8-1393211-1		
T92S11A12-120						120 VAC	8-1393211-0		
T92S11A12-240						240 VAC	8-1393211-2		
T92S11A22-12						Top sealed			Panel mount + quick connect
T92S11A22-24	24 VAC	8-1393211-6							
T92S11A22-120	120 VAC	8-1393211-4							
T92S11A22-240	240 VAC	8-1393211-7							
T92S11D12-12	Wash tight		DC	PCB terminals		12 VDC	8-1393211-9		
T92S11D12-24						24 VDC	9-1393211-0		
T92S11D12-48						48 VDC	9-1393211-1		
T92S11D12-110						110 VDC	8-1393211-8		
T92S11D22-12						Top sealed			Panel mount + quick connect
T92S11D22-24	24 VDC	9-1393211-4							
T92P7D12-12-99	Plastic dust cover	2 form A, 2 NO	DC	PCB terminals	AgCdO	12VDC	2-2071223-3		
T92S7D1X-12-99	Wash tight				Panel mount + quick connect	AgSnO+AgNi	12VDC	6-1423008-1	
T92S7D2X-12-99	Top Sealed					12VDC	6-1423008-2		
T92S7A22-240	Top Sealed(WG)			AC	PCB terminals	AgCdO	240VAC	1393212-5	
T92S7D12-12-00	Wash tight (WG)			DC			12VDC	1-2071223-7	
T92S7D22-12-02	Top Sealed(WG)						12VDC	1-2071223-5	