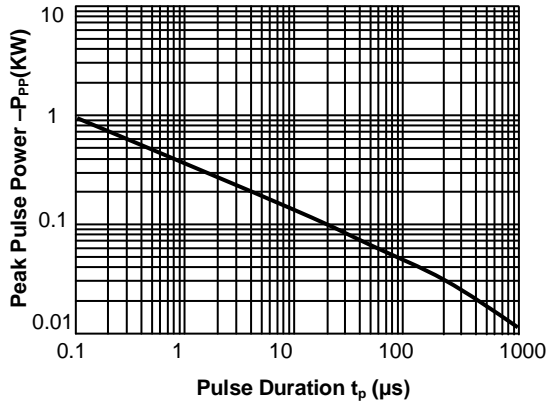
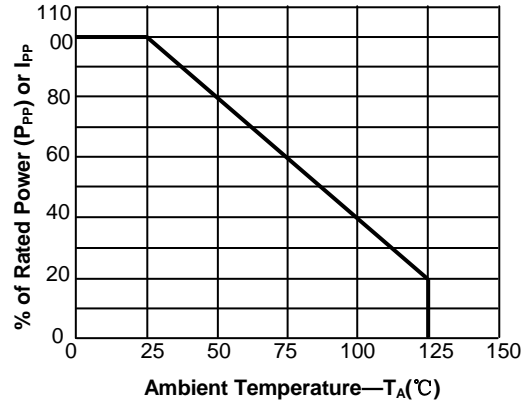


**Typical Characteristic Curves**

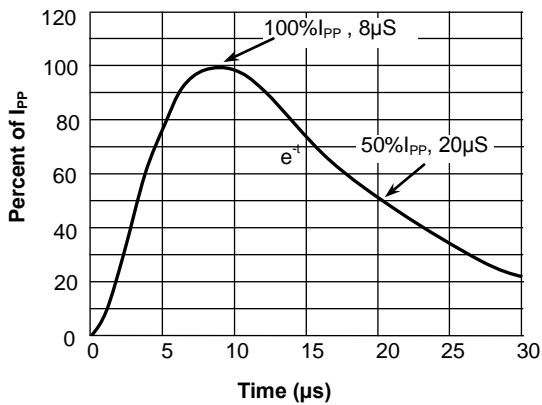
**Fig.1 Peak Pulse Power Rating Curve**



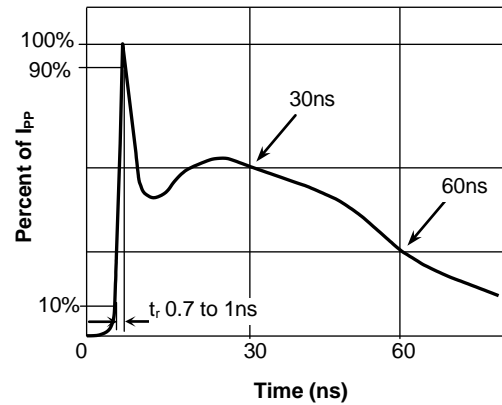
**Fig.2 Pulse Derating Curve**



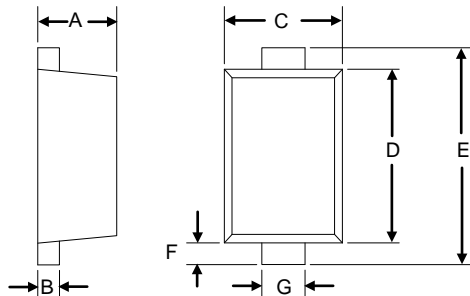
**Fig.3 Pulse Waveform-8/20 $\mu s$**



**Fig.4 Pulse Waveform-ESD(IEC61000-4-2)**



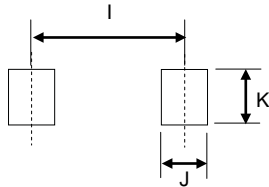
**Product Dimensions**



**SOD-923**

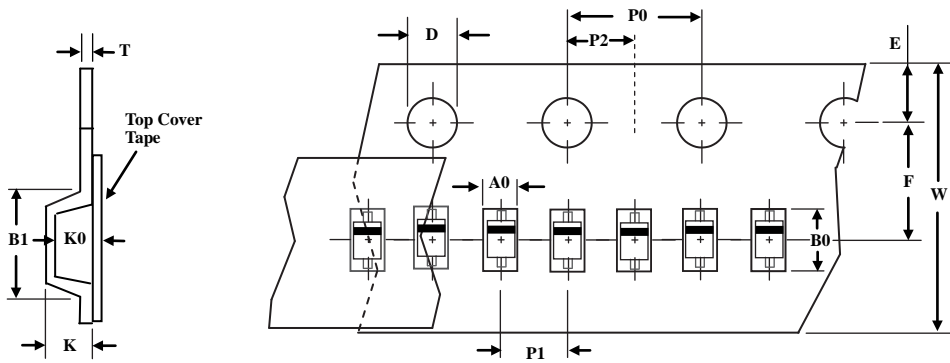
Dim	mm	
	min	max
A	0.34	0.40
B	0.07	0.17
C	0.55	0.65
D	0.75	0.85
E	0.95	1.05
F	0.05	0.15
G	0.15	0.25

**PAD Dimensions**



Dim	mm
I	0.90
J	0.30
K	0.35

**Package Information**

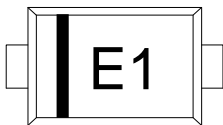


TapeSize(W)	B1 max	D	E	F	K max	P0	P1	P2	T max	W max
8	4.55	1.55±0.05	1.75±0.1	3.5±0.05	2.4	4.0±0.1	2.0±0.05	2.0±0.05	0.6	8.3

Note:1.Unit : mm

2. A0, B0, and K0 are determined by component size. The clearance between the components and the cavity must be within 0.05mm min to 0.50 mm max. The component cannot rotate more than 10° within the determined cavity.

**Marking**



**Order Information**

Device	Package	Net Weight	Carrier	Quantity	HSF Status
SES3V3D923-2U	SOD-923	0.0006g	Tape & Reel	8000pcs / Reel	RoHS compliant