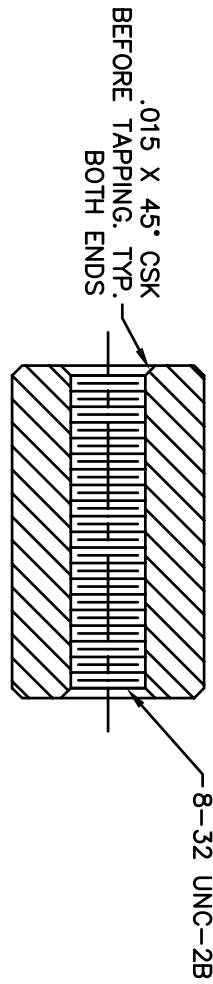
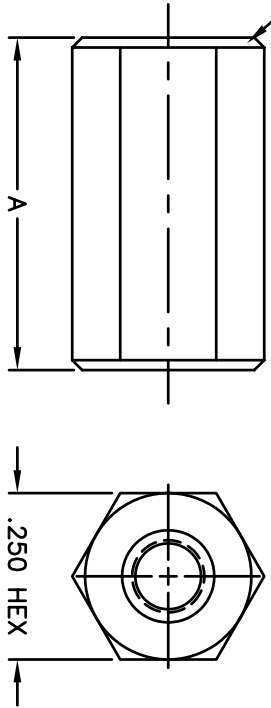


REVISIONS		
SYM	DESCRIPTION	REVISED DATE / APPR



.015 MAX X 45° CHAM. BOTH ENDS



PART#	"A"
8440	.125
9298	.187
8441	.250
9299	.312
8442	.375
9300	.437
8443	.500
9301	.562
8444	.625
9302	.687
8445	.750
9303	.812
8446	.875
9304	.937
8447	1.000

MATERIAL: ALUMINUM ALLOY 2011 T-3		FINISH: CLEAR CHROMATE	
DIMENSIONAL TOLERANCES UNLESS OTHERWISE SPECIFIED		TITLE: 8440-8447, 9298-9304	
XX	XXX	XXXX	ALUMINUM HEX STANDOFF
---	---	---	1/4 HEX THD THRU #8-32
FRACTIONS	ANGLES	SCALE	
---	---	NONE	
HEAT TREAT: ---	DRAWN: T. LORD	DATE: 2/8/05	<b>ABBATRON</b> Electronic Connectors and Hardware 632 Arch Street, Meadville, Pa. 16335
PLOT SCALE: 1=1	CHECKED: T. LORD	DATE: 2/8/05	
	APPROVED: T. LORD	DATE: 2/8/05	
	SIZE: B	DRAWING NUMBER: SD: SMP-00454	ISSUE: B