

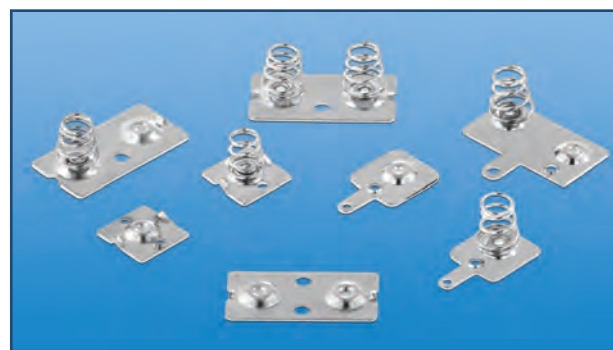
SPRING & BUTTON CONTACTS

For "A" - "AA"

- Economical and reliable contacts are ideal for molded cases with self contained battery compartments
- Single and dual contact designs available for "A" & "AA" size batteries
- "Solder tab" design for either wire lead or PC mounting
- Unique spring contacts adjust to variations in battery lengths
- Reliable spring contacts assure low contact resistance and a dependable connection
- Space saving, economical, excellent mechanical construction

MATERIAL:

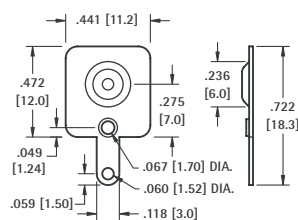
Plate: .020 (.51) thick Steel, Nickel Plate **Spring:** Spring Steel, Nickel Plate



Refer to page 27 for Battery Contact Layout & Mounting Details

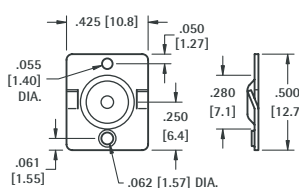
For "A" - "AA"

(+) POSITIVE BUTTON WITH TAB



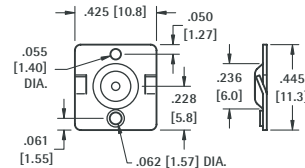
CAT. NO. 5223

(+) POSITIVE BUTTON



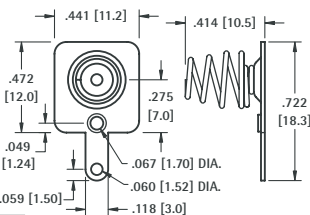
CAT. NO. 5221

(+) POSITIVE BUTTON



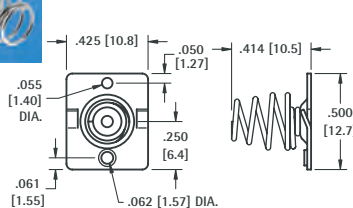
CAT. NO. 5224

(-) NEGATIVE SPRING WITH TAB



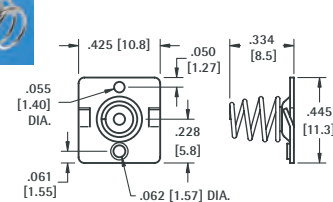
CAT. NO. 5201

(-) NEGATIVE SPRING



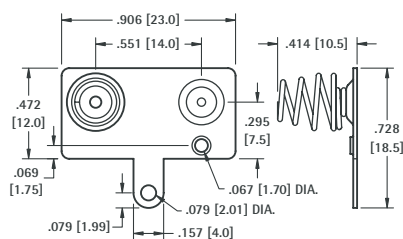
CAT. NO. 5222

(-) NEGATIVE SPRING



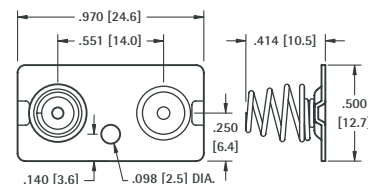
CAT. NO. 5202

DUAL CONTACTS WITH TAB



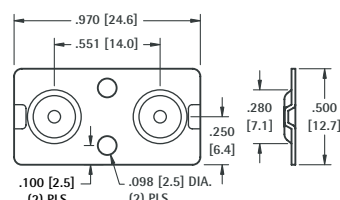
CAT. NO. 5211

DUAL CONTACTS



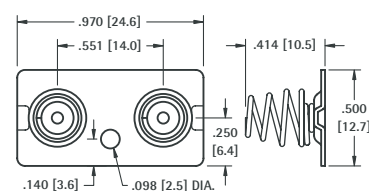
CAT. NO. 5212

DUAL BUTTON CONTACT



CAT. NO. 5227

DUAL SPRING CONTACT



CAT. NO. 5228

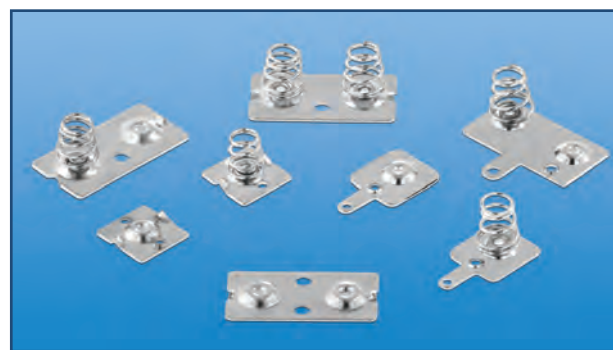
SPRING & BUTTON CONTACTS

For "A" - "AA"

- Economical and reliable contacts are ideal for molded cases with self contained battery compartments
- Single and dual contact designs available for "A" & "AA" size batteries
- "Solder tab" design for either wire lead or PC mounting
- Unique spring contacts adjust to variations in battery lengths
- Reliable spring contacts assure low contact resistance and a dependable connection
- Space saving, economical, excellent mechanical construction

MATERIAL:

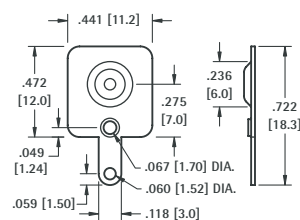
Plate: .020 (.51) thick Steel, Nickel Plate **Spring:** Spring Steel, Nickel Plate



Refer to page 27 for Battery Contact Layout & Mounting Details

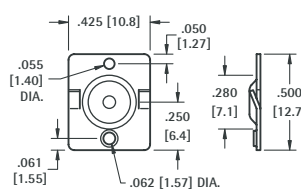
For "A" - "AA"

(+) POSITIVE BUTTON WITH TAB



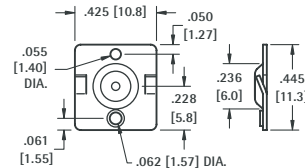
CAT. NO. 5223

(+) POSITIVE BUTTON



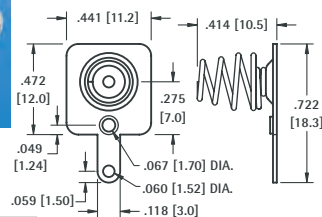
CAT. NO. 5221

(+) POSITIVE BUTTON



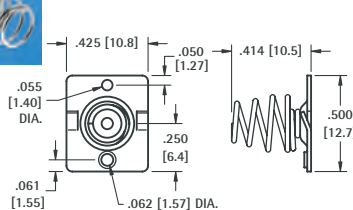
CAT. NO. 5224

(-) NEGATIVE SPRING WITH TAB



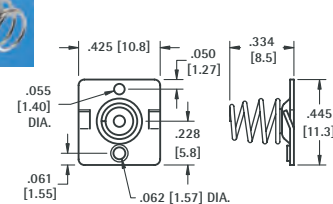
CAT. NO. 5201

(-) NEGATIVE SPRING



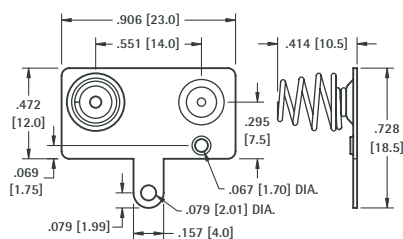
CAT. NO. 5222

(-) NEGATIVE SPRING



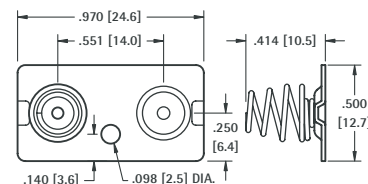
CAT. NO. 5202

DUAL CONTACTS WITH TAB



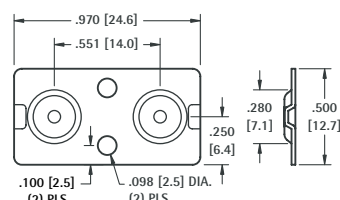
CAT. NO. 5211

DUAL CONTACTS



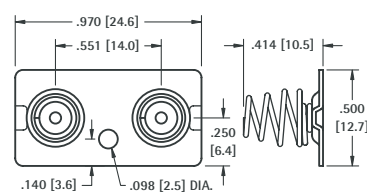
CAT. NO. 5212

DUAL BUTTON CONTACT



CAT. NO. 5227

DUAL SPRING CONTACT



CAT. NO. 5228