



Copyright FCI.

PRODUCT NUMBER	DIM	LENGTH FORMULAS (SEE NOTE 10)
51722-ABBCCC00EF_	DIM "A"	6.35 x BB +2.54 x (CCC/4) +16.51(NOTE 10)
SEE NOTE 1	DIM "B"	6.35 x BB +2.54 x (CCC/4)+ 8.89
	DIM "C"	6.35 x BB +2.54 x (CCC/4) + 7.62
	DIM "D"	6.35 x BB + 9.53
	DIM "F"	6.35 x BB +2.54 x (CCC/4) + 17.27
	DIM "G"	6.35 x BB + 5.72

CONNECTOR NOTES

- ①. PRODUCT NUMBER CODE:

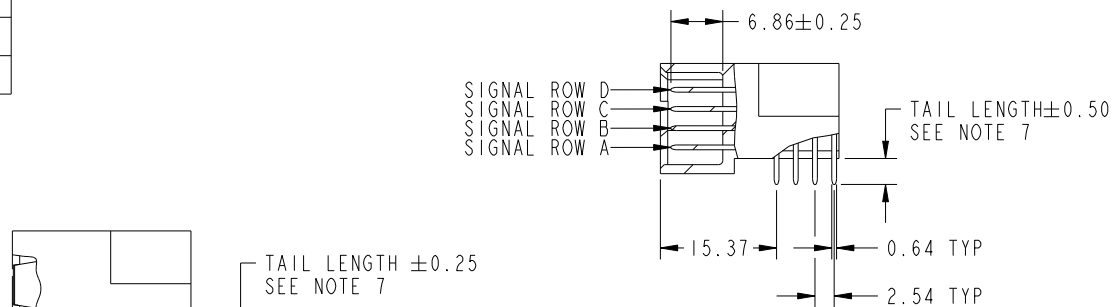
51722 - A BB CCC 00 E F LF

NO THIS SUFFIX:100u"/2.54um SnPb ON PCB INTERFACE
ADD THIS SUFFIX:78u"/2.00um Sn ON PCB INTERFACE
RETENTION TO PCB (NOTE 8)
TAIL OPTIONS (NOTE 7)
ALWAYS '00' (ZERO, ZERO)(NOTE 6)
NUMBER OF SIGNAL CONTACTS (NOTE 5)
NUMBER OF LEFT POWER CONTACTS (NOTE 4)
PLATING (NOTE 3)
BASE NUMBER
- ②. HOUSING MATERIAL: GLASS FILLED V-O HIGH TEMP THERMO PLASTIC.
SIGNAL CONTACT MATERIAL: COPPER ALLOY
POWER CONTACT MATERIAL: COPPER ALLOY
- ③. PLATING OPTION:
I = SEE PRINT 10064183 FOR PLATING SPEC OF 51722-1BBCCC00EF; 51722-1BBCCC00EFLF
B = SEE IN PRINT 10125789 FOR PLATING SPEC OF 51722-BBBCCC00EF; 51722-BBBCCC00EFLF
- ④. LEFT END POWER CONTACTS, 01 TO 20 AVAILABLE.
MAXIMUM OF 20 POWER CONTACTS PER CONNECTER.
- ⑤. SIGNAL CONTACTS, 004 TO 148 AVAILABLE.
- ⑥. THIS PART IS NOT AVAILABLE WITH RIGHT SIDE POWER CONTACTS.
- ⚠ ⑦. TAIL OPTIONS:
A = 3.43 SOLDER TO BOARD
B = 4.19 SOLDER TO BOARD
C = 3.43 PRESS FIT
D = 2.34 SOLDER TO BOARD
- ⑧. RETENTION TO PCB OPTIONS:
A = BOARD LOCK (REQUIRES 2.49 +0.05, -0.03 THRU HOLE IN PCB).
MOUNTING FOOT THICKNESS 5.59
B = 3.81 THRU HOLE (REQUIRES 4.01±0.07 THRU HOLE IN PCB).
MOUNTING FOOT THICKNESS 4.06
MOUNTING HOLES, WHERE APPLICABLE, ARE UNPLATED.
- ⑨. MANUFACTURE'S NAME, P/N, AND DATE CODE TO APPEAR ON THIS SURFACE.
- ⑩. THE MAXIMUM OVERALL LENGTH (DIM A) OF A PART IS 203.2
11. PRODUCT SPECIFICATION GS-12-149
APPLICATION SPECIFICATION BUS-20-067
12. REFERENCE 51697 FOR SELECT LOAD/FMLB WORKSHEET

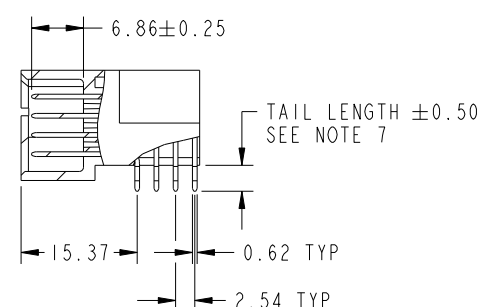
PCB NOTES:

13. ALL DIMENSIONS ARE BASIC UNLESS OTHERWISE SPECIFIED.
14. ALL THROUGH HOLES ARE LOCATED WITH A TRUE POSITION OF 0.10
15. ALL HOLE DIAMETERS ARE FINISHED HOLE SIZE.
- ⑪. Ø1.151±0.025 DRILLED HOLES PLATED WITH 0.008 MIN SnPb OR Sn OVER 0.03 TO 0.08 Cu PLATING TO ACHIEVE A 1.02±0.07 HOLE.
17. A ΔSYMBOL WILL BE NEXT TO ANY DIMENSION, VIEW, OR NOTE WHICH HAS BEEN MODIFIED WITH THE CURRENT DRAWING REVISION.
- ⑫. CONNECTOR KEEP OUT ZONE

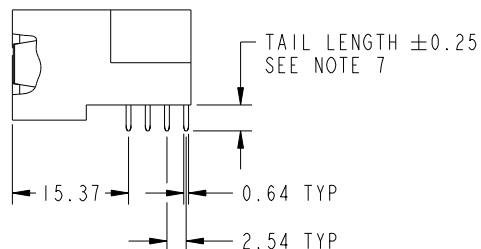
dr	wcadmin	2006/05/26	<div>projection</div> <div></div>	<div>MM</div> <div></div>	size	A4	scale	1:1									
eng	Ruan MT	2015/09/30			ecn no		ELX-DG-21593-1										
chr	Fancy Zhang	2015/09/30			rel level		Released										
appr	Pei-Ming Zheng	2015/09/30	product family		PwrBlade												
<div></div>			title			R/A HEADER WITH GUIDE PIN			dwg no		51722		rev		P		
						POWER / SIGNAL											
www.fci.com			cat. no.			51722			Product - Customer Drw			sheet 2 of 3					



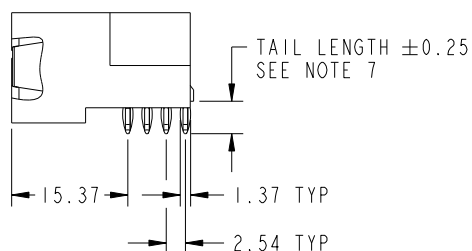
△ P BROKEN-OUT SECTION C-C
FOR SOLDER TO BOARD ONLY



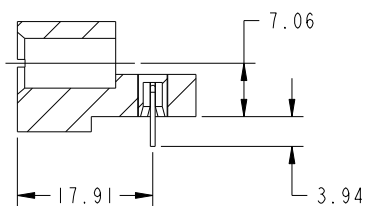
△ P BROKEN-OUT SECTION C-C
FOR PRESS FIT ONLY



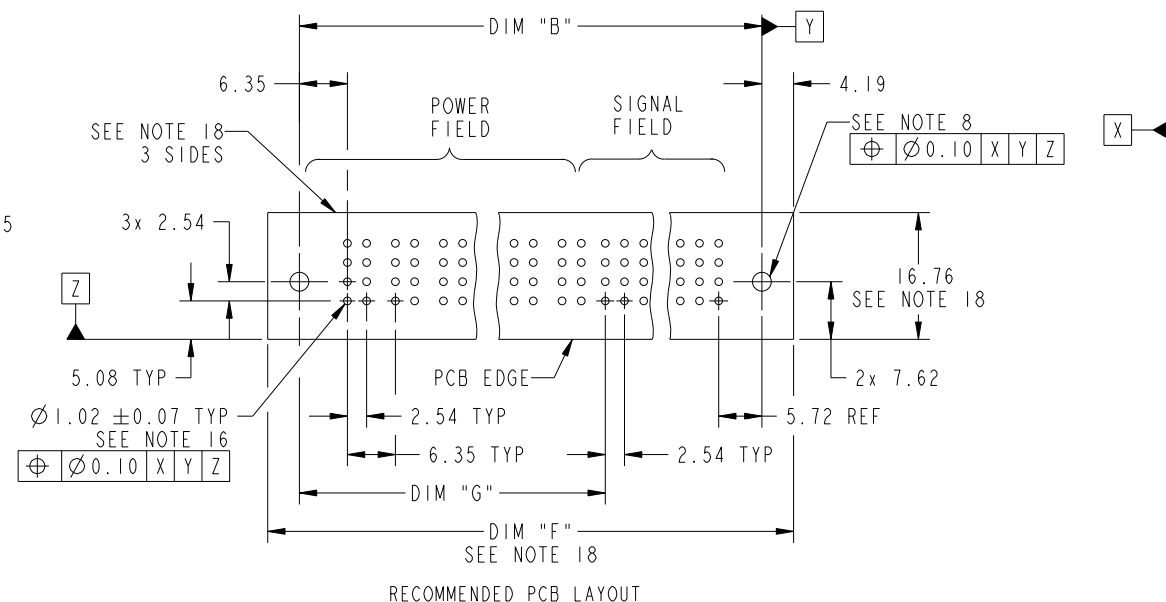
△ BROKEN-OUT SECTION B-B
FOR SOLD TO BOARD ONLY

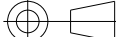




△ P BROKEN-OUT SECTION B-B
FOR PRESS FIT ONLY



SECTION A-A



dr	w wcadmin	2006/05/26	<div>projection</div> <div></div>	<div>MM</div> <div></div>	size	A4	scale	1:1	
eng	Ruan MT	2015/09/30			ecn no				ELX-DG-21593-1
chr	Fancy Zhang	2015/09/30			rel level				Released
appr	Pei-Ming Zheng	2015/09/30	product family		PwrBlade				
	title R/A HEADER WITH GUIDE PIN POWER / SIGNAL				dwg no 51722			rev	
								P	
www.fci.com	cat. no.		51722	Product - Customer Drw				sheet 3 of 3	