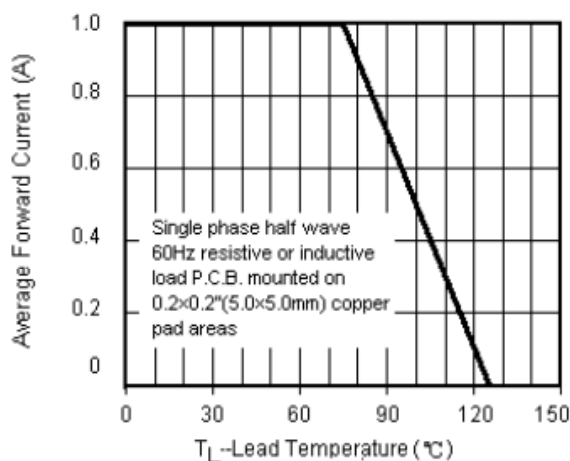


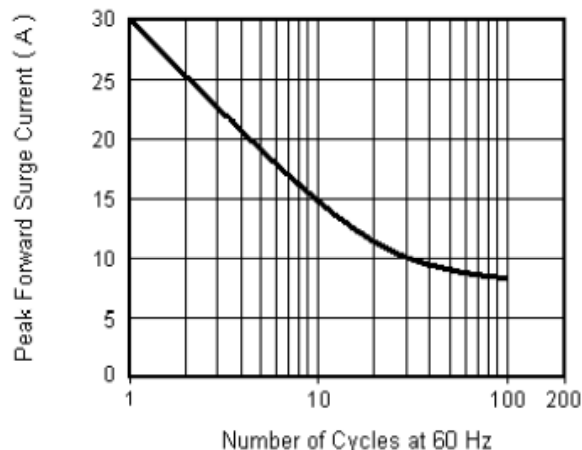
## Ratings and Characteristics Curves

( $T_A = 25^\circ\text{C}$  unless otherwise noted)

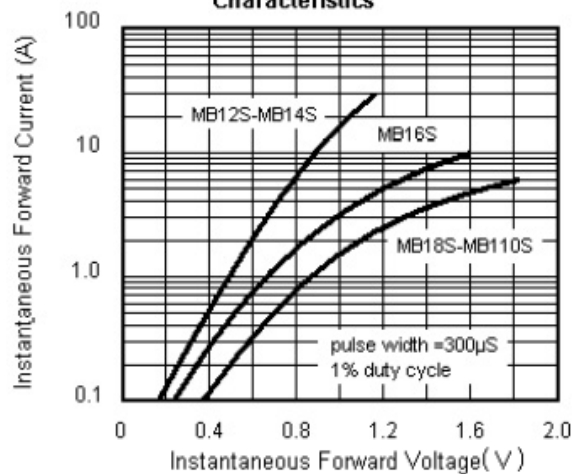
**Fig.1 Forward Current Derating Curve**



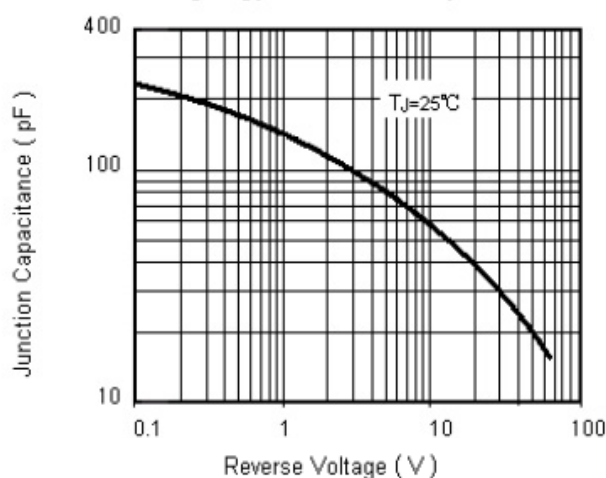
**Fig.2 Maximum Non-Repetitive Peak Forward Surge Current**



**Fig.3 Typical Instantaneous Forward Characteristics**



**Fig.4 Typical Junction Capacitance**

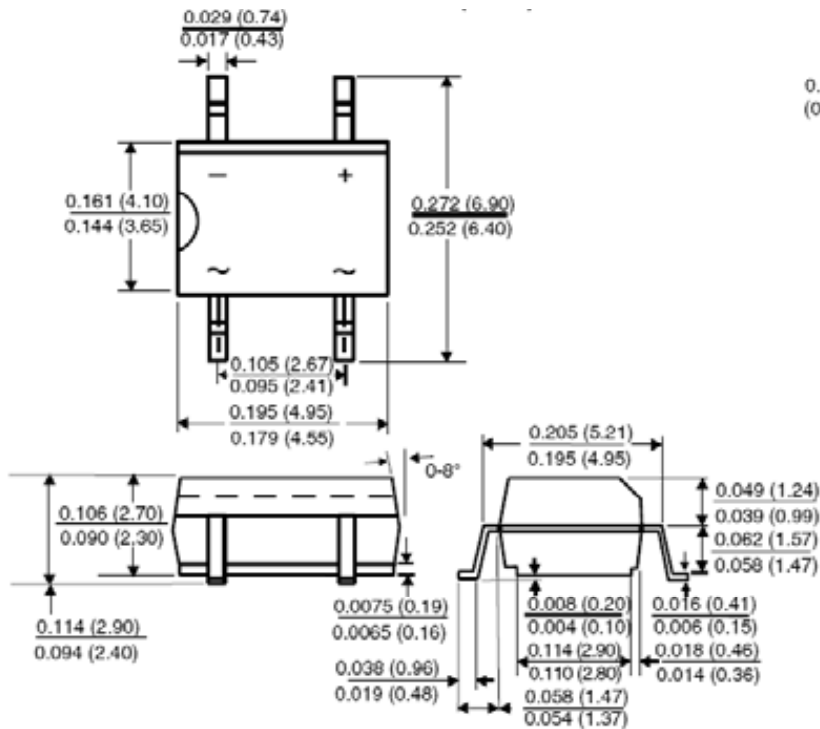


# MB12S thru MB110S

Surface Mount Schottky Bridge Rectifier  
Reverse Voltage 20 to 100V Forward Current 1A

## Package Outline Dimensions

TO-269AA (MBS)



Dimensions in inches and (millimeters)

## Mounting Pad Layout

