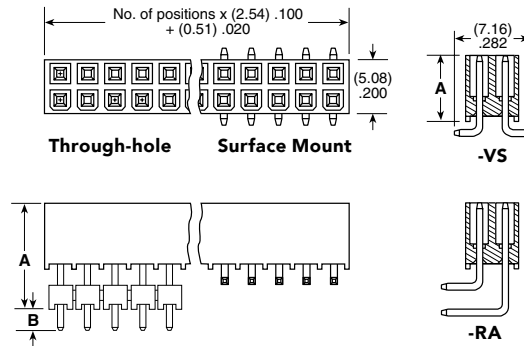


## (2.54 mm) .100" PITCH • SHROUDED POWER CONNECTOR SET

IPT1	1	NO. PINS PER ROW	LEAD STYLE	PLATING OPTION	D	TAIL OPTION	OTHER OPTIONS
		05	Specify LEAD STYLE from chart	<b>-L</b> = 10 $\mu$ " (0.25 $\mu$ m) Gold on contact, Matte Tin on tail		Requires -01 Lead Style (Leave blank for Through-hole)	<b>-A</b> = Alignment Pin (-VS only) (N/A with -LC)
		10					
		15					
		20					
		25 (Standard Sizes)					
						<b>-RA</b> = Right-angle	<b>-LC</b> = Locking Clip (Manual placement required) (-VS only) (N/A with -A)
						<b>-VS</b> = Surface Mount	<b>-K</b> = (6.00 mm) .236" DIA Polyimide film Pick & Place Pad (-VS only)
							<b>-TR</b> = Tape & Reel (-VS only)
							<b>-FR</b> = Full Reel Tape & Reel (must order max. quantity per reel; contact Samtec for quantity breaks) (-VS only)

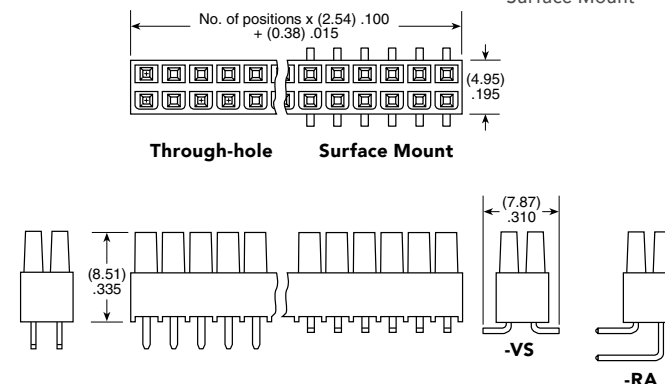
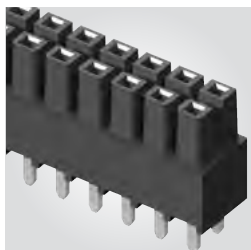
**IPT1**  
Board Mates:  
IPS1



LEAD STYLE	MATED HEIGHT	A	B
-01	(11.05) .435	(6.35) .250	(2.16) .085
-01-VS	(13.59) .535	(6.35) .250	N/A
-02	(14.00) .551	(9.30) .366	(2.64) .104
-03	(16.00) .630	(11.30) .445	(2.16) .085
-04	(17.00) .669	(12.30) .484	(2.69) .106
-05	(19.00) .748	(14.30) .563	(2.46) .097
-06	(20.00) .787	(15.30) .602	(2.35) .093
-07	(25.00) .984	(20.30) .799	(2.31) .091
-08	(30.00) 1.181	(25.30) .996	(2.39) .094
-09	(35.00) 1.378	(30.30) 1.193	(2.46) .097

IPS1	1	NO. PINS PER ROW	01	PLATING OPTION	D	TAIL OPTION	OTHER OPTIONS
		05		<b>-L</b> = 10 $\mu$ " (0.25 $\mu$ m) Gold on contact, Matte Tin on tail		Leave blank for Through-hole	<b>-LC</b> = Locking Clip (Manual placement required) (-VS only)
		10					
		15					
		20					
		25 (Standard Sizes)					
						<b>-RA</b> = Right-angle	<b>-K</b> = (5.50 mm) .217" DIA Polyimide film Pick & Place Pad (-VS only)
						<b>-VS</b> = Surface Mount	<b>-TR</b> = Tape & Reel (-VS only)
							<b>-FR</b> = Full Reel Tape & Reel (must order max. quantity per reel; contact Samtec for quantity breaks) (-VS only)

**IPS1**  
Board Mates:  
IPT1



**Note:**  
Some lengths, styles and options are non-standard, non-returnable.

View complete specifications at: [samtec.com?IPT1](http://samtec.com?IPT1) & [samtec.com?IPS1](http://samtec.com?IPS1)