

LOW FREQUENCY REFLOWABLE CYLINDRICAL WATCH CRYSTAL



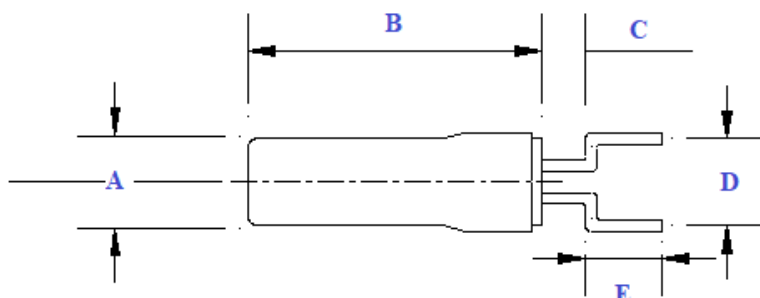
6.0 x ϕ 1.9mm

AB26TRB

Pb in high temperature solder
(exempt 7(a) per 2015/863/EU Annex)

RoHS
Compliant

OUTLINE DIMENSIONS:

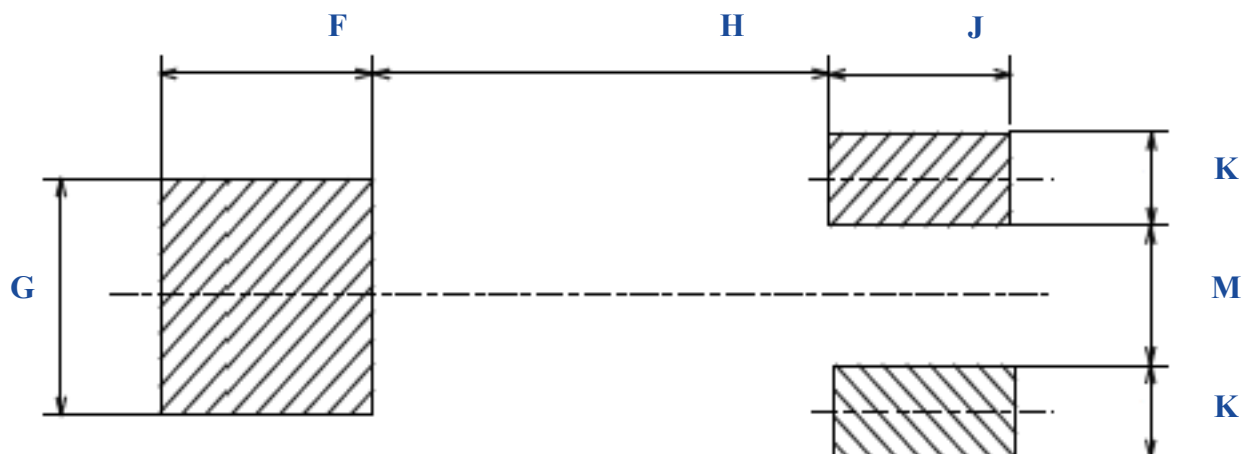


Dimension Table	
A	$\phi 1.9 \pm 0.1$
B	6.0 ± 0.2
C	1.0
D	2.54 ± 0.3
E	2.0 ± 0.3

NOTE:

The body/can of the component is not to be soldered. To do so may cause damage to the crystal.

Use Adhesive/Bonding Materials (i.e. Rubber Adhesive, Epoxy, etc) to affix the component body to the PCB.



F	G	H	J	K	M
2.5	2.5	5.25	2.5	1.0	1.5

Dimensions: mm

LOW FREQUENCY REFLOWABLE CYLINDRICAL WATCH CRYSTAL



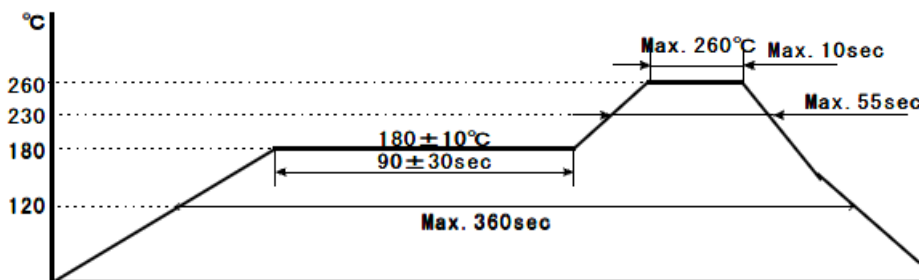
6.0 x ϕ 1.9mm

AB26TRB

Pb in high temperature solder
(exempt 7(a) per 2015/863/EU Annex)

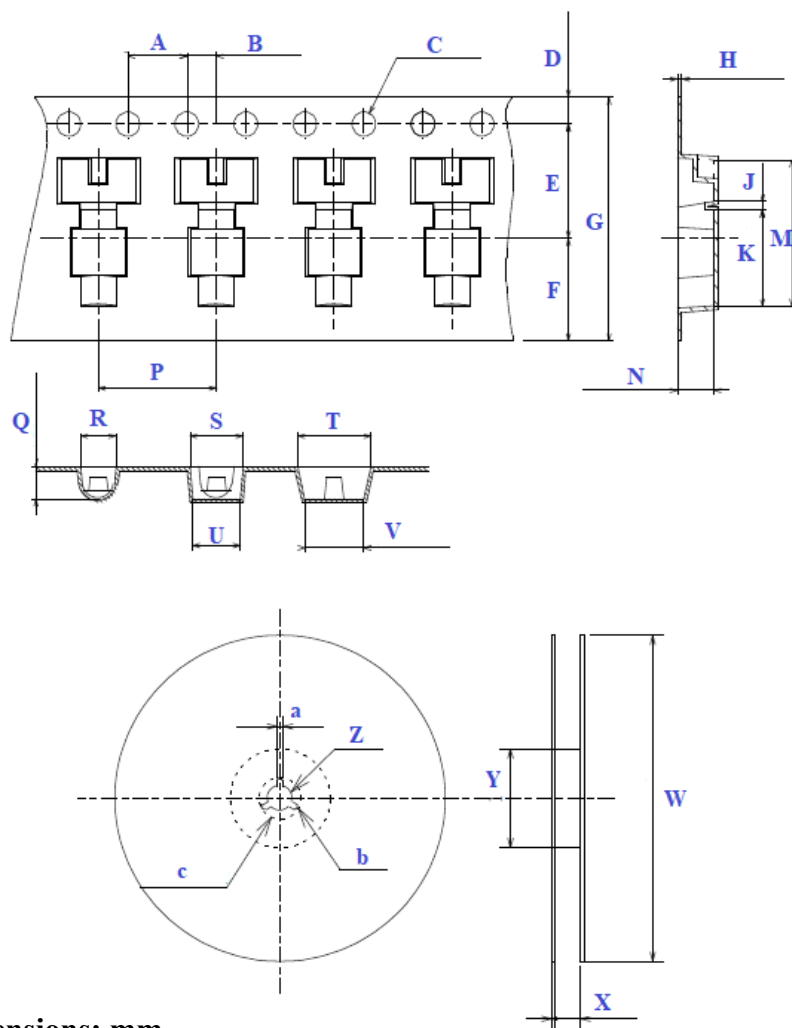
RoHS
Compliant

REFLOW PROFILE:



TAPE & REEL:

Packaging: 2000pcs/reel



Dimensions: mm

Dimension Table

A	4.0 ± 0.1
B	2.0 ± 0.1
C	Ø 1.5 ± 0.1
D	1.75 ± 0.1
E	7.5 ± 0.1
F	(6.75)
H	0.3 ± 0.05
G	16 ± 0.3
J	0.6
K	6.3 ± 0.1
M	9.4
N	2.15 ± 0.1
P	8.0 ± 0.1
Q	2.15 ± 0.1
R	2.05
S	3.6
T	5.0
U	3.2
V	4.0 ± 0.1
W	Ø 330
X	19.5
Y	Ø 100
Z	Ø 13
a	2.0
b	R1.0
c	Ø 21 ± 0.8

ATTENTION: Abracon LLC's products are COTS – Commercial-Off-The-Shelf products; suitable for Commercial, Industrial and, where designated, Automotive Applications. Abracon's products are not specifically designed for Military, Aviation, Aerospace, Life-dependent Medical applications or any application requiring high reliability where component failure could result in loss of life and/or property. For applications requiring high reliability and/or presenting an extreme operating environment, written consent and authorization from Abracon LLC is required. Please contact Abracon LLC for more information.



5101 Hidden Creek Ln Spicewood TX 78669
Phone: 512-371-6159 | Fax: 512-351-8858
For terms and conditions of sales, please visit:
www.abracon.com

REVISED: 10-1-19

ABRACON IS
ISO9001-2015
CERTIFIED