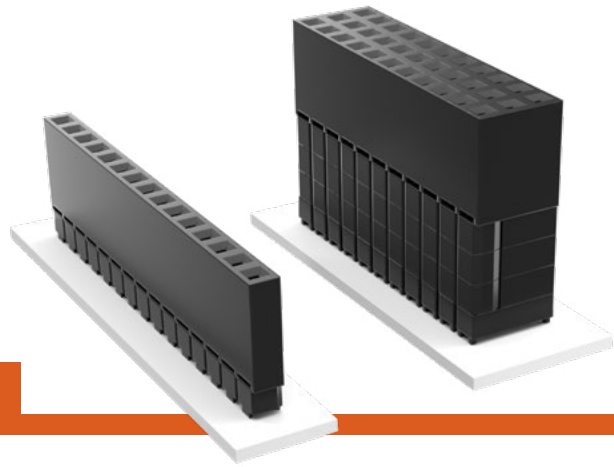


ELEVATED SOCKETS

(2.54 mm) .100" PITCH • ESW/ESQ SERIES



ESW/ESQ

Mates:

TSW, MTSW, EW,
MTLW, TSS, ZSS, TSM,
DW, ZW, HW, TSSH, HTSS

SPECIFICATIONS

Insulator Material:

Black Glass Filled Polyester

Contact Material:

Phosphor Bronze

Plating:

Au or Sn over
50 μ " (1.27 μ m) Ni

Current Rating (ESW/TSW):

5.2 A per pin
(2 pins powered)

Current Rating (ESQ/TSW):

5.7 A per pin
(2 pins powered)

Voltage Rating:

550 VAC mated with
TSW or ESQ

Operating Temp Range:

-55 °C to +125 °C with Gold

-55 °C to +105 °C with Tin

Insertion Depth:

(3.68 mm) .145" to
(6.35 mm) .250"

Normal Force:

Standard = 125 grams (4.4 N)

Max Cycles:

100 with 10 μ " (0.25 μ m) Au

SERIES	1	NO. PINS PER ROW	LEAD STYLE	PLATING OPTION	ROW OPTION	OTHER OPTION
--------	---	------------------	------------	----------------	------------	--------------

ESW
= Solder Tail

01 thru 36

Specify
LEAD
STYLE
from
chart

ESQ
= Square Tail

-L
= 10 μ " (0.25 μ m)
Gold contact,
Matte Tin on tail

-S
= Single Row

-D
= Double Row

-LL
= Locking Lead
(Two leads per
strip crimped.
Not available
with single row
1 or 2 positions)

-G
= 20 μ " (0.51 μ m)
Gold contact,
Gold Flash on
Balance

-T
= Triple Row
(ESQ only)

"XXX"
= Polarized

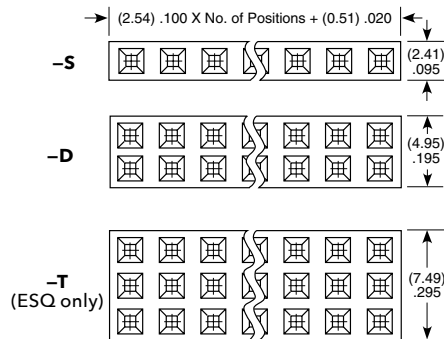
-T
= Matte Tin
(Not available
with LIF contact)

LEAD STYLE			
STANDARD INSERTION FORCE	Low INSERTION FORCE	A	B
- 12	- 37	(2.29) .090	(11.05) .435
- 13	- 38	(7.36) .290	
- 23	- 48	(4.83) .190	(13.59) .535
- 33	- 58	(2.29) .090	(16.13) .635
- 14	- 39	(12.19) .480	(11.05) .435
- 24	- 49	(9.65) .380	(13.59) .535
- 34	- 59	(7.11) .280	(16.13) .635
- 44	- 69	(4.57) .180	(18.67) .735

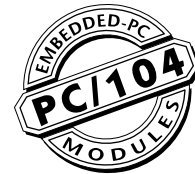
PROCESSING

Lead-Free Solderable:

No, Lead Wave only

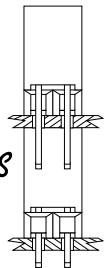


APPLICATIONS



*Self
Nesting
Sockets*

(ESQ SERIES)

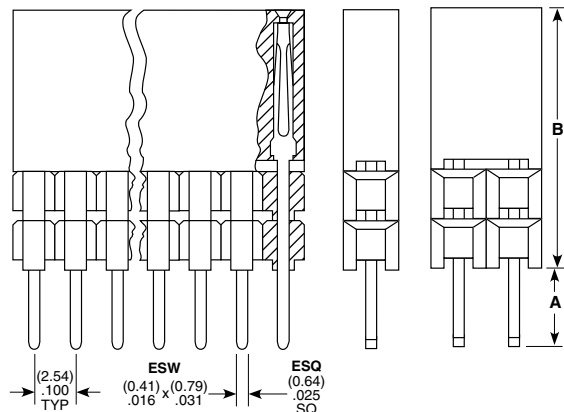


ALSO AVAILABLE

Other Plating
(MOQ Required)

Note:

Some lengths, styles and
options are non-standard,
non-returnable.



PC/104™ J1/P1 "Stackthrough" Connectors	
Standard Insertion Force	ESQ-132-14-G-D
Low Insertion Force	ESQ-132-39-G-D
PC/104™ J1 "Non-Stackthrough" Connectors	
Standard Insertion Force	ESQ-132-12-G-D
Low Insertion Force	ESQ-132-37-G-D
PC/104™ J2/P2 "Stackthrough" Connectors	
Standard Insertion Force	ESQ-120-14-G-D
Low Insertion Force	ESQ-120-39-G-D

PC/104 is a trademark of the PC/104 Consortium.