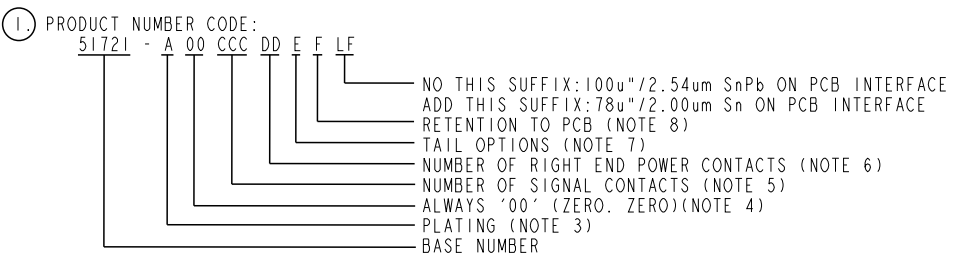




Copyright FCI.

PRODUCT NUMBER		DIM	LENGTH FORMULAS (SEE NOTE 10)
51721-A00CCDDEF--		DIM "A"	2.54 x (CCC/4) + 6.35 x DD + 16.51(NOTE 10)
SEE NOTE 1		DIM "B"	2.54 x (CCC/4) + 6.35 x DD + 8.89
		DIM "C"	2.54 x (CCC/4) + 6.35 x DD + 7.62
		DIM "E"	2.54 x (CCC/4) + 11.43
		DIM "F"	2.54 x (CCC/4) + 6.35 x DD + 17.27
		DIM "H"	2.54 x (CCC/4) + 6.35

CONNECTOR NOTES



- ②. HOUSING MATERIAL: GLASS FILLED V-O HIGH TEMP THERMO PLASTIC.
SIGNAL CONTACT MATERIAL: COPPER ALLOY
POWER CONTACT MATERIAL: COPPER ALLOY
- ③. PLATING OPTION:
I = SEE PRINT 10064183 FOR PLATING SPEC OF 51721-100CCDDEF; 51721-100CCDDEFLF
- ④. THIS PART IS NOT AVAILABLE WITH LEFT SIDE POWER CONTACTS.
- ⑤. SIGNAL CONTACTS, 004 TO 148 AVAILABLE.
- ⑥. RIGHT END POWER CONTACTS, 01 TO 20 AVAILABLE.
MAXIMUM OF 20 POWER CONTACTS PER CONNECTOR.
- △ ⑦. TAIL OPTIONS:
A = 3.43 SOLDER TO BOARD
B = 4.19 SOLDER TO BOARD
C = 3.43 PRESS FIT
D = 2.34 SOLDER TO BOARD

- ⑧. RETENTION TO PCB OPTIONS:
A = BOARD LOCK (REQUIRES 2.49 +0.05, -0.03 THRU HOLE IN PCB).
MOUNTING FOOT THICKNESS 5.59
B = 3.81 THRU HOLE (REQUIRES 4.01±0.07 THRU HOLE IN PCB).
MOUNTING FOOT THICKNESS 4.06
MOUNTING HOLES, WHERE APPLICABLE, ARE UNPLATED.
- ⑨. MANUFACTURE'S NAME, P/N, AND DATE CODE
TO APPEAR ON THIS SURFACE.
- ⑩. THE MAXIMUM OVERALL LENGTH (DIM A) OF A PART
IS 203.2
11. PRODUCT SPECIFICATION GS-12-149
APPLICATION SPECIFICATION BUS-20-067
12. REFERENCE 51697 FOR SELECT LOAD/FMLB WORKSHEET

PCB NOTES:

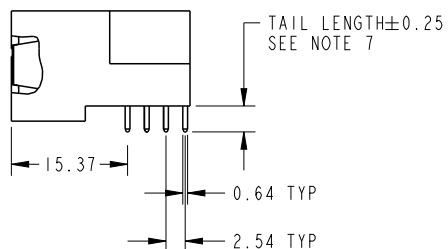
13. ALL DIMENSIONS ARE BASIC UNLESS OTHERWISE SPECIFIED.
14. ALL THROUGH HOLES ARE LOCATED WITH A
TRUE POSITION OF 0.10
15. ALL HOLE DIAMETERS ARE FINISHED HOLE SIZE.
- ⑬. Ø1.151±0.025 DRILLED HOLES PLATED WITH
0.008 MIN SnPb OR Sn OVER 0.03 TO 0.08
Cu PLATING TO ACHIEVE A 1.02±0.07 HOLE.
17. A △ SYMBOL WILL BE NEXT TO ANY DIMENSION, VIEW, OR
NOTE WHICH HAS BEEN MODIFIED WITH THE CURRENT
DRAWING REVISION.
- △ ⑭. CONNECTOR KEEP OUT ZONE

dr	Julia Wang	2006/09/20	<div>projection</div> <div></div>	<div>MM</div> <div></div>	size	A4	scale	1:1
eng	Ruan MT	2015/09/30			ecn noELX-DG-21593-1			
chr	Fancy Zhang	2015/09/30						
appr	Pei-Ming Zheng	2015/09/30	product family		PwrBlade	rel level	Released	
<div></div>			title			R/A HEADER WITH GUIDE PIN		rev
			SIGNAL / POWER			51721		
www.fci.com			cat. no.			51721		
			Product - Customer Drw			sheet 2 of 3		

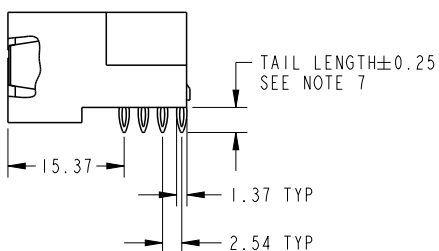
PRODUCT NUMBER

51721-A00CCDDEF_..

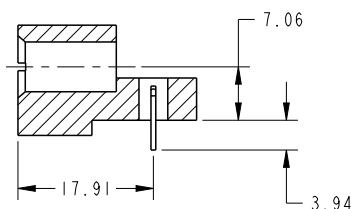
SEE NOTE 1



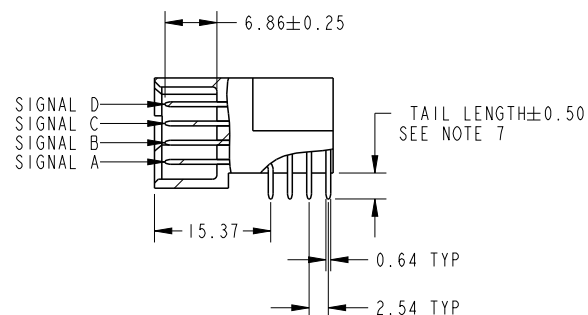
△ BROKEN-OUT SECTION B-B
FOR SOLDER TO BOARD ONLY



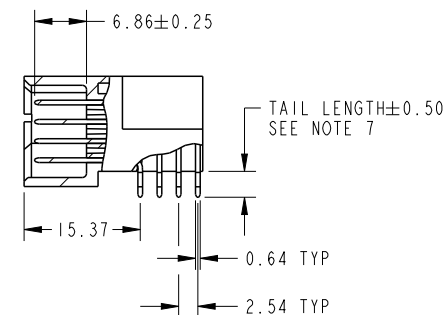
△ BROKEN-OUT SECTION B-B
FOR POWER PRESS FIT ONLY



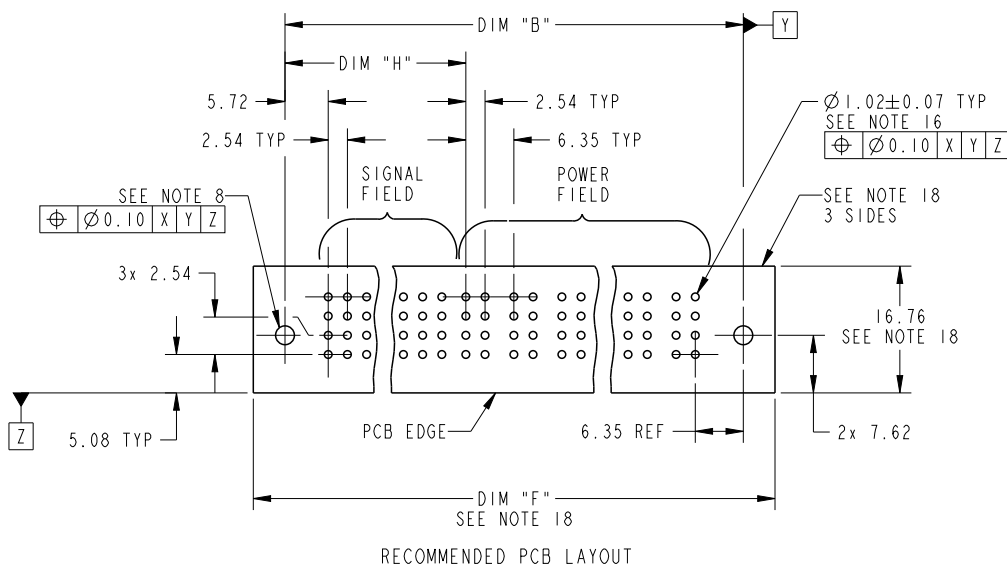
SECTION A-A



△ BROKEN-OUT SECTION C-C
FOR SOLDER TO BOARD ONLY



△ BROKEN-OUT SECTION C-C
FOR PRESS FIT ONLY



RECOMMENDED PCB LAYOUT

dr	Julia Wang	2006/09/20	projection	MM	size	A4	scale	1:1
eng	Ruan MT	2015/09/30			ecn no	ELX-DG-21593-1		
chr	Fancy Zhang	2015/09/30			rel level	Released		
appr	Pei-Ming Zheng	2015/09/30	product family	PwrBlade				
	title	R/A HEADER WITH GUIDE PIN			dwg no	51721		rev
		SIGNAL / POWER						P
www.fci.com	cat. no.	51721	Product - Customer Drw			sheet 3 of 3		