

# PRODUCT NUMBER

10056844-YXXXLF

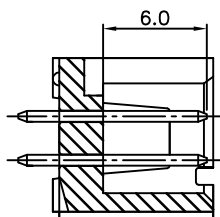
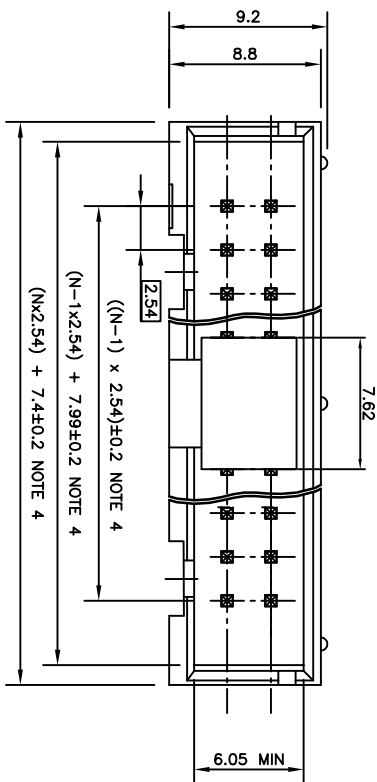
LEAD FREE, RoHS COMPATIBLE, NOTE 8.  
PACKAGING SEE NOTE 5

PLATING  
1 - 0.76µm GOLD/6XT  
(PbNi WITH GOLD FLASH) ON CONTACT AREA  
2µm MIN MATTE TIN ON TAILS.  
1.27µm NICKEL MIN UNDERPLATING

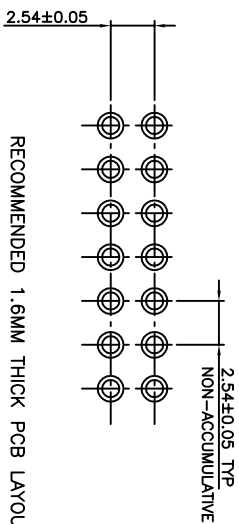
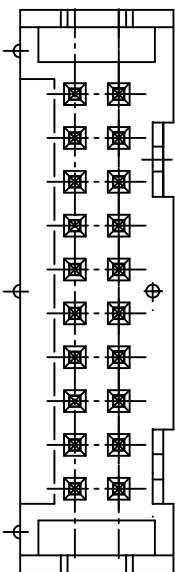
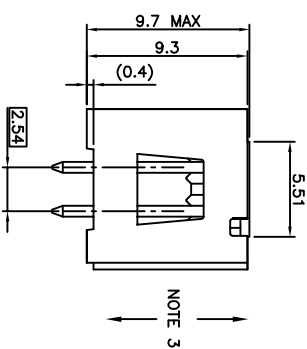
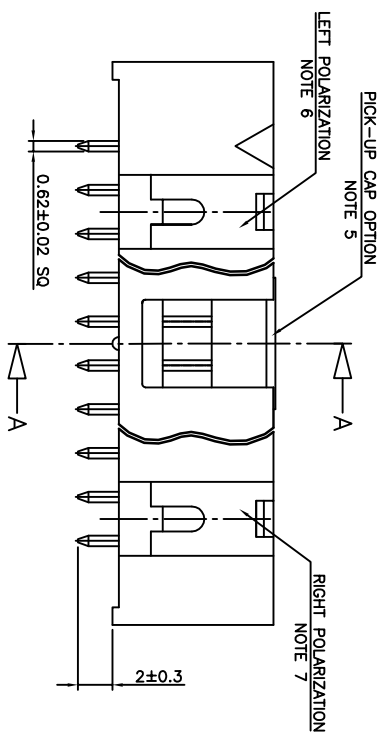
STYLE	SIZE
06	2x03
08	2x04
10	2x05
14	2x07
16	2x08
20	2x10
26	2x13
30	2x15
34	2x17
40	2x20

## NOTES:

- HOUSING MATERIAL: HIGH TEMPERATURE THERMOPLASTIC, UL94 V-0 COLOR BLACK.
- CONTACT MATERIAL: COPPER ALLOY
- MINIMUM PUSH OUT FORCE OF PIN IN EITHER DIRECTION : 20N BEFORE SOLDERING.
- TO DETERMINE DIMENSIONS :  
N = NUMBER OF POSITIONS PER ROW  
EXAMPLE : 8 POS N x 2.54 = 20.32mm
- PACKAGING.  
A = TAPE & REEL WITH PICK-UP CAP.  
SEE TA-893 FOR PRODUCT AVAILABILITY.  
= TUBE WITHOUT PICK-UP CAP
- NO LEFT POLARIZATION ON STYLE 06, 08, 10, 14.
- NO RIGHT POLARIZATION ON STYLE 06, 08.
- RoHS COMPLIANT & COMPATIBLE PRODUCT SPECIFICATIONS
- PLATING:  
- "LF" MEANS THE PRODUCT IS LEAD-FREE AND RoHS COMPLIANT  
2µm MINIMUM MATTE TIN ON TAILS OVER 1.27µm MINIMUM NICKEL UNDERPLATE.
- THIS PRODUCT MEETS EUROPEAN UNION DIRECTIVES AND OTHER COUNTRY REGULATIONS AS PER GS-47-0004
- MANUFACTURING PROCESS COMPATIBILITY  
- THE HOUSING WILL WITHSTAND EXPOSURE TO 260° PEAK TEMPERATURE FOR 10-30 SECONDS IN A CONVECTION INFRA-RED OR VAPOR PHASE REFLOW OVEN.



SECTION A-A  
WITHOUT CAP



RECOMMENDED 1.6MM THICK PCB LAYOUT,  
STENCIL DESIGN RECOMMENDATIONS AS PER TA-894

mat'l. code	surface	tolerance	projection	product family
NOTES 1, 2	ISO 1302	ISO 406 ISO 1101	mm	QKIE HDR
lfr ecn no dr date	tolerances unless otherwise specified			
H B-19564 BVE 14.11.27	angles	X ± 0.3		
C F07-0192 LMU 07.05.22	linear	xxx ± 0.15	scale 1:1	
D F07-0198 LMU 07.05.30 dr LMU		05.05.30		
E F08-0146 YOV 08.04.11 engf JCO		06.07.17		
F F09-0098 LMU 09.09.28 chr				
G B-19070 LMU 14.10.15 appd J COMPAGNON 06.07.17				
sheet revision				
index sheet				



QKIE HEADER

LOW PROFILE PIN IN PASTE

10056844

type CUSTOMER Drawing