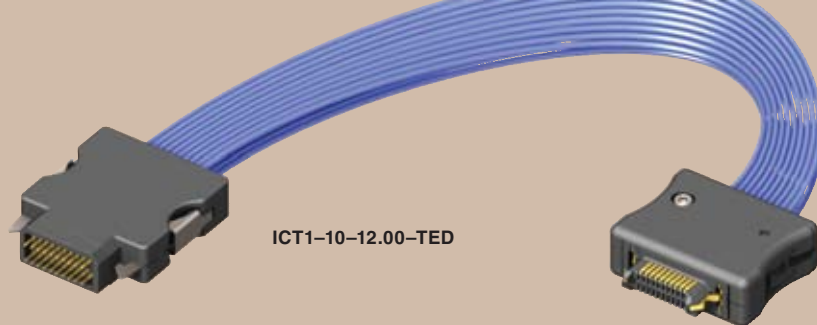


(1,00mm) .0394"

ICT1, IRM1 SERIES



# RUGGED LOW COST TEST PROBE

Mates with:  
ERF8(-L), IRM1

## FEATURES

- Eliminate costly PCB test connectors
- Lower production costs by moving most of the interface costs to the lab tool/cable
- Spring loaded compression interface
- Mechanical squeeze latch for easy on/off

## SPECIFICATIONS

For complete specifications and recommended PCB layouts see [www.samtec.com?ICT1](http://www.samtec.com?ICT1)

### Cable:

28 AWG

Silver plated Copper

### Probe Tip:

Phosphor Bronze

### Plating:

Au over 50µ" (1,27µm) Ni

### Operating Temp Range:

-55°C to +125°C

### RoHS Compliant:

Yes



ICT1

NO. OF POSITIONS  
PER ROWWIRE  
LENGTHINSTRUMENT  
END

## APPLICATION

-05, -07,  
-10, -20

Wire Length in inches

-12.00

= 12.00" (304,80mm)

-24.00

= 24.00" (609,60mm)

-36.00

= 36.00" (914,40mm)

-ICT1

= Probe Pin

-TEU

= ERM8 Pin 1 up  
(-10 & -20 positions only)

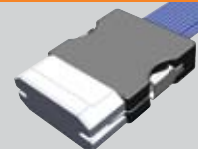
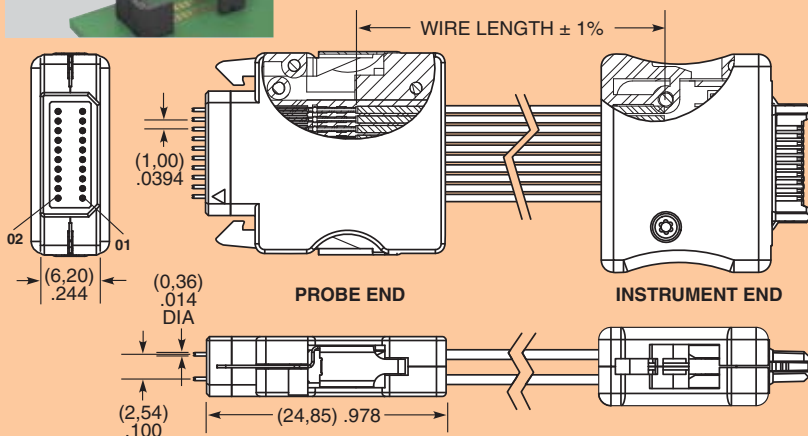
-TED

= ERM8 Pin 1 down  
(-10 & -20 positions only)

-HHSC

= Terminal  
Through-hole  
(-10 positions only)

## PROBE CAP

Standard probe cap  
protects pins.

Mates with:  
ICT1

## SPECIFICATIONS

For complete specifications and recommended PCB layouts see [www.samtec.com?IRM1](http://www.samtec.com?IRM1)

### Insulator Material:

Black LCP

### Plating:

Sn over 50µ" (1,27µm) Ni

### Weld Tab:

Phosphor Bronze



IRM1

NO. OF POSITIONS

01

PLATING

TR

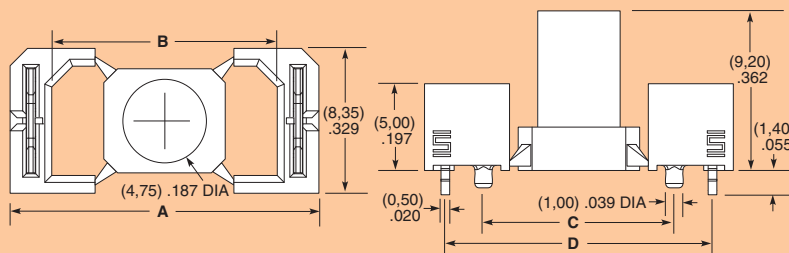
-05, -07, -10, -20

-T

= Matte Tin

-TR

= Tape &amp; Reel



NO. OF POSITIONS	A	B	C	D
-05	(12,80) .504	(8,00) .315	(6,00) .236	(10,40) .409
-07	(14,80) .583	(10,00) .394	(8,00) .315	(12,40) .488
-10	(17,80) .701	(13,00) .512	(11,00) .433	(15,40) .606
-20	(27,80) 1.094	(23,00) .906	(21,00) .827	(25,40) 1.000

**Note:** Paste in Hole (PIH) technology.

**Note:** Some sizes, styles and options are non-standard, non-returnable.

Due to technical progress, all designs, specifications and components are subject to change without notice.

[WWW.SAMTEC.COM](http://WWW.SAMTEC.COM)

SAMTEC USA • Tel: 1-800-SAMTEC-9 or 812-944-6733 SAMTEC NORTHERN CALIFORNIA • Tel: 408-395-5900 SAMTEC SOUTHERN CALIFORNIA • Tel: 1-800-726-8329  
 SAMTEC AMERICA LATINA COMERCIO EXTERIOR LTDA • Tel: (+55 31) 3786 3227 SAMTEC UNITED KINGDOM • Tel: 44 01236 739292 SAMTEC GERMANY • Tel: +49 (0) 89 / 89460-0  
 SAMTEC FRANCE • Tel: 33 01 60 95 06 60 SAMTEC ITALY • Tel: 39 039 6890337 SAMTEC NORDIC/BALTIC • Tel: +46-84477280 SAMTEC BENELUX • Tel: 44 01236 739292  
 SAMTEC ISRAEL • Tel: 972-3-7526600 SAMTEC INDIA • Tel: +91-80-3272 1612 SAMTEC ASIA PACIFIC • Tel: 65 6745-5955 SAMTEC JAPAN • Tel: 045-475-1385 SAMTEC CHINA • Tel: 86-21-6083 3766  
 2735-6109 SAMTEC HONG KONG • Tel: 852-26904858 SAMTEC KOREA • Tel: 82-31-717-5685 SAMTEC ANZ • Tel: 613 9580 0683