

H11L1, H11L1V

Truth Table

LED	V _o
ON	LOW
OFF	HIGH

ELECTRICAL CHARACTERISTICS (T_A = 25°C, unless otherwise specified. Typical Values at T_A = 25°C)

INPUT

Parameter	Symbol	Test Condition	Min	Typ.	Max	Unit
Forward Voltage	V_F	$I_F = 10\text{mA}$		1.15	1.5	V
Reverse Current	I_R	$V_R = 5\text{V}$			10	μA
Terminal Capacitance	C_{IN}	$V = 0\text{V}, f = 1\text{MHz}$		33		pF

OUTPUT

Parameter	Symbol	Test Condition	Min	Typ.	Max	Unit
Operating Voltage	V_{CC}		3		15	V
Supply Current	$I_{CC(off)}$	$V_{CC} = 5V, I_F = 0mA$		1.6	5	mA
High Level Output Current	I_{OH}	$I_F = 0mA, V_{CC} = V_O = 15V$			100	μA



H11L1, H11L1V

ELECTRICAL CHARACTERISTICS ($T_A = 25^\circ\text{C}$, unless otherwise specified, Typical Values at $T_A = 25^\circ\text{C}$)

COUPLED

Parameter	Symbol	Test Condition	Min	Typ.	Max	Unit
Supply Current	$I_{CC(on)}$	$V_{CC} = 5V, I_F = 10mA$		1.6	5	mA
Low Level Output Voltage	V_{OL}	$V_{CC} = 5V, I_F = I_{F(on)} (max), R_L = 270\Omega$			0.4	V
Turn-On Threshold Current	$I_{F(on)}$	$V_{CC} = 5V, R_L = 270\Omega$			1.6	mA
Turn-Off Threshold Current	$I_{F(off)}$	$V_{CC} = 5V, R_L = 270\Omega$		1		mA
Hysteresis Ratio	$I_{F(off)}/I_{F(on)}$	$V_{CC} = 5V, R_L = 270\Omega$	0.5		0.9	
Turn-On Time	$t_{(on)}$	$V_{CC} = 5V, I_F = I_{F(on)} (max), R_L = 270\Omega$			4	μs
Fall Time	t_f			0.1		
Turn-Off Time	$t_{(off)}$				4	
Rise Time	t_r			0.1		

ISOLATION

Parameter	Symbol	Test Condition	Min	Typ.	Max	Unit
Isolation Voltage	V_{ISO}	R.H. = 40% to 60%, $t = 1 \text{ min}$, Note 1	5000			V_{RMS}
Input - Output Resistance	R_{I-O}	$V_{I-O} = 500VDC$ R.H. = 40% to 60%	10^{11}			Ω

Note 1 : Measured with input leads shorted together and output leads shorted together.



H11L1, H11L1V

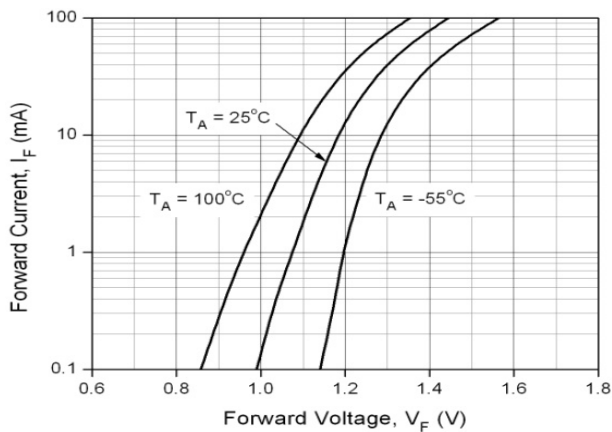


Fig 1 Forward Current vs Forward Voltage

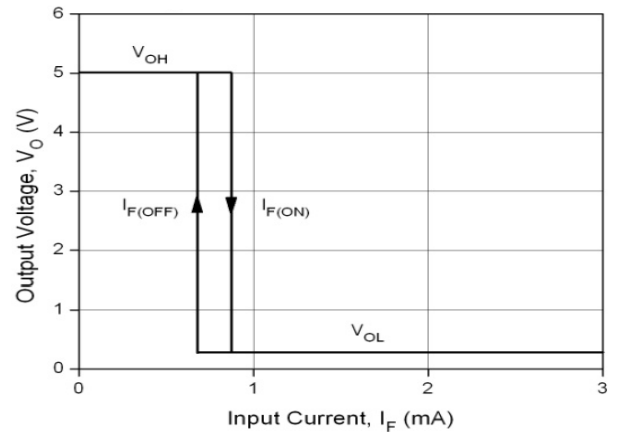


Fig 2 Transfer Characteristics

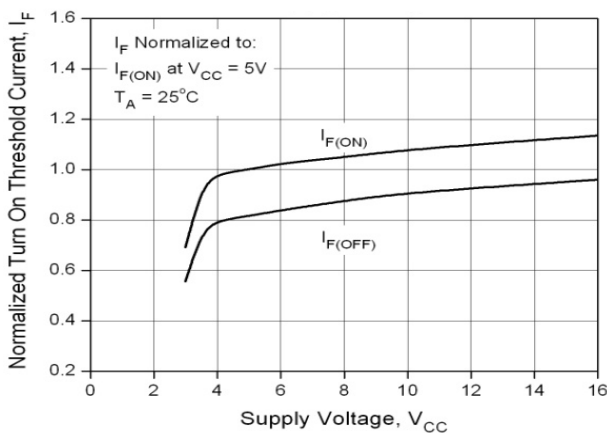


Fig 3 Normalized Turn-On Current vs Supply Voltage

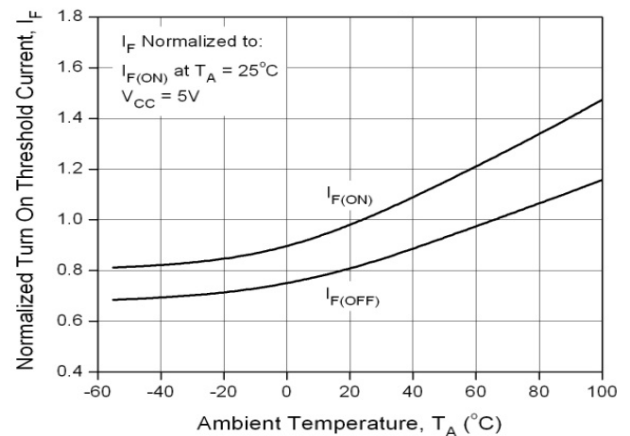


Fig 4 Normalized Turn-On Current vs Ambient temperature

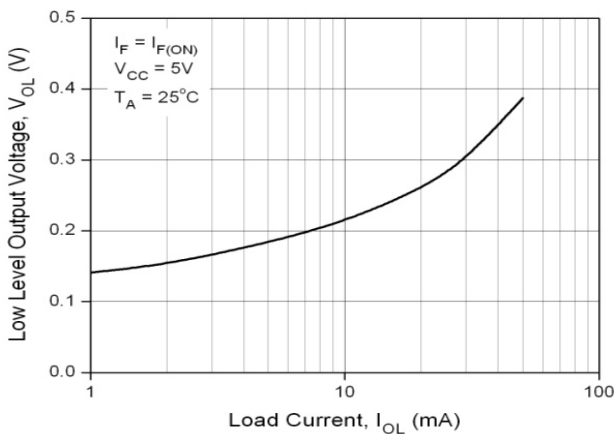


Fig 5 Low Level Output Voltage vs Load Current

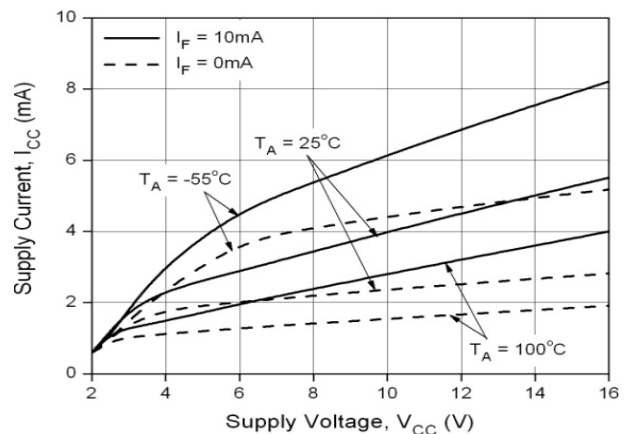
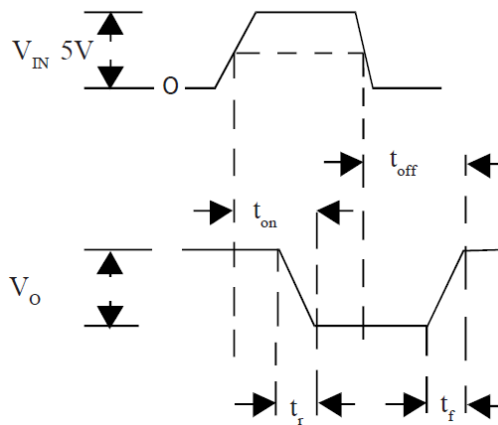
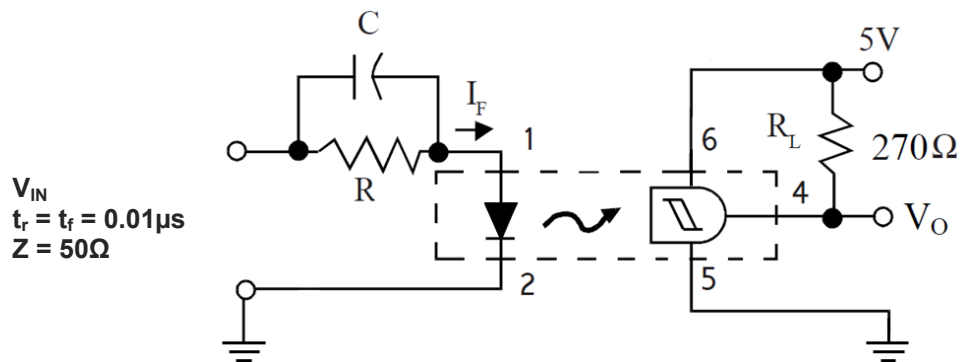


Fig 6 Supply Current vs Supply Voltage



ISOCOM
COMPONENTS

H11L1, H11L1V



Switching Time Test Circuit and Waveform

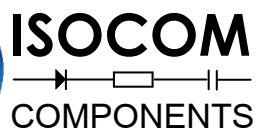


H11L1, H11L1V

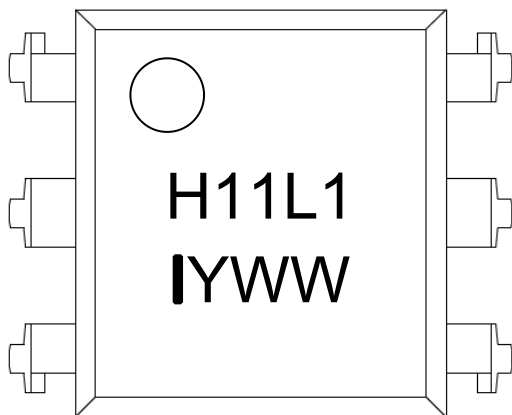
ORDER INFORMATION

H11L1 (UL Approval)			
After PN	PN	Description	Packing quantity
None	H11L1	Standard DIP6	65 pcs per tube
G	H11L1G	10mm Lead Spacing	65 pcs per tube
SM	H11L1SM	Surface Mount	65 pcs per tube
SMT&R	H11L1SMT&R	Surface Mount Tape & Reel	1000 pcs per reel

H11L1V (UL Approval and VDE Approvals)			
After PN	PN	Description	Packing quantity
None	H11L1V	Standard DIP6	65 pcs per tube
G	H11L1VG	10mm Lead Spacing	65 pcs per tube
SM	H11L1VSM	Surface Mount	65 pcs per tube
SMT&R	H11L1VSMT&R	Surface Mount Tape & Reel	1000 pcs per reel



DEVICE MARKING



I denotes Isocom

WW denotes 2 digit Week code

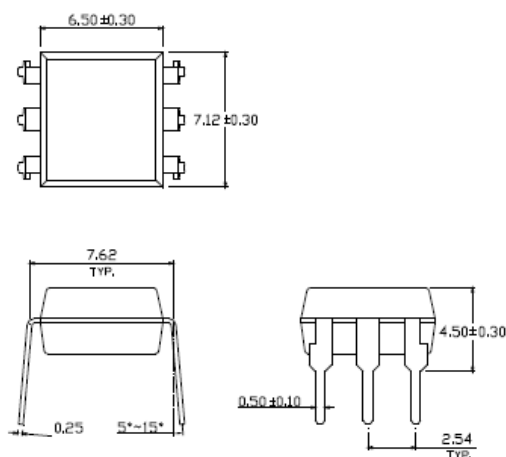


ISOCOM
COMPONENTS

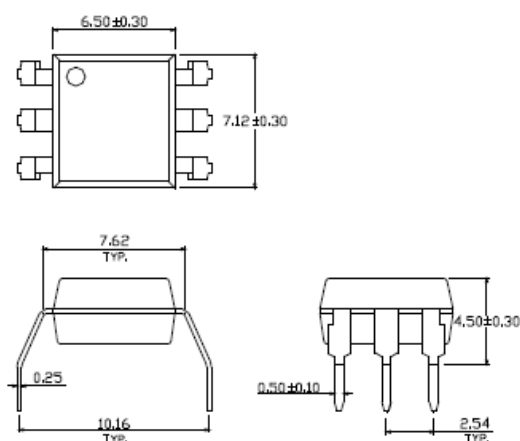
H11L1, H11L1V

PACKAGE DIMENSIONS in mm (inch)

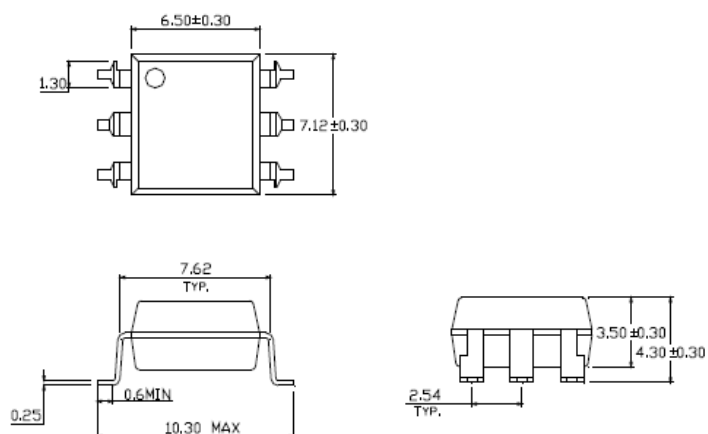
DIP



G Form



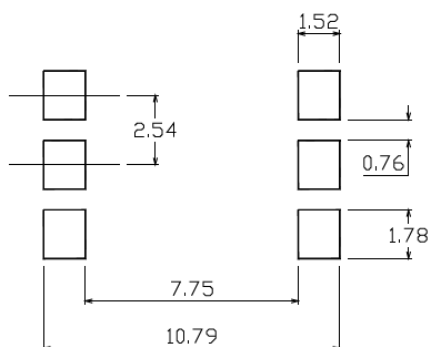
SMD



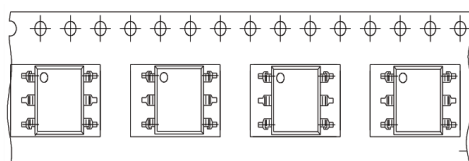


H11L1, H11L1V

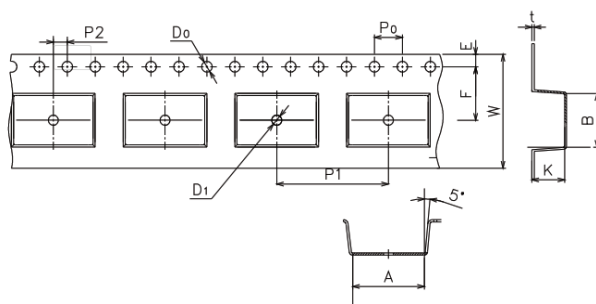
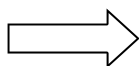
RECOMMENDED PAD LAYOUT FOR SMD (mm)



TAPE AND REEL PACKAGING



Direction of feed from reel

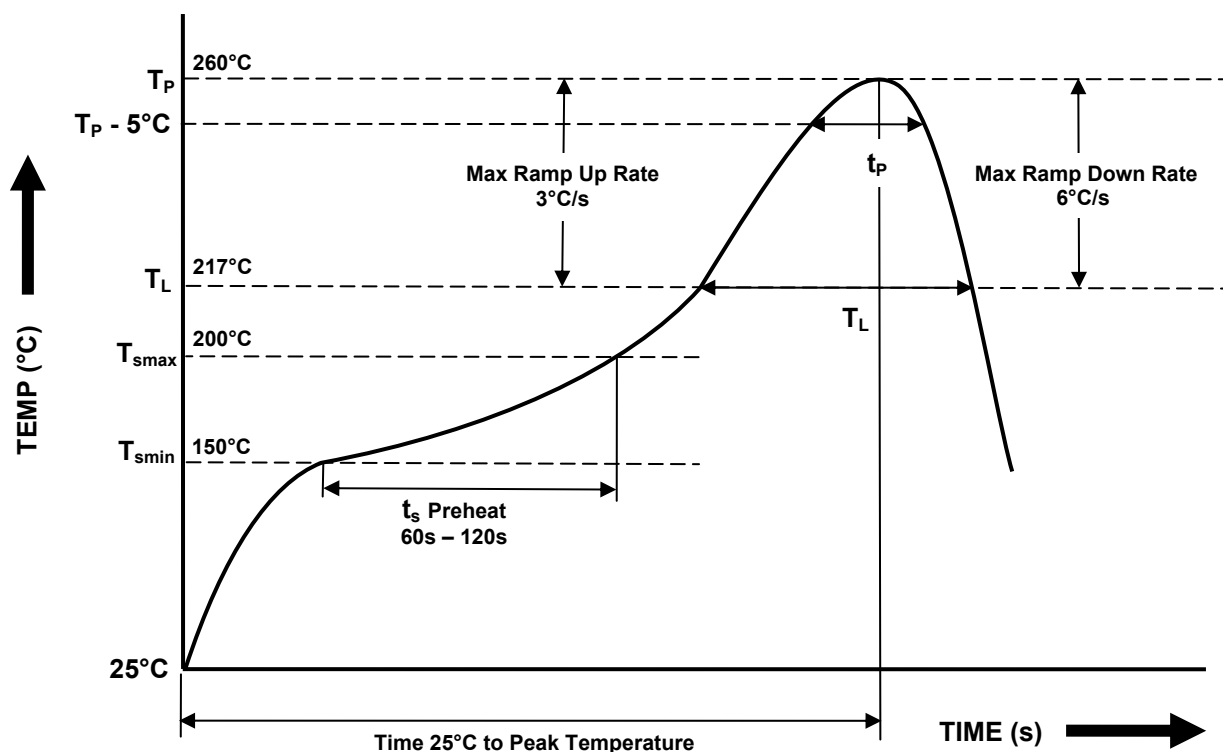


Dimension No.	A	B	Do	D1	E	F
Dimension(mm)	10.4±0.1	7.5±0.1	1.5±0.1	1.5+0.1/-0	1.75±0.1	7.5±0.1
Dimension No.	Po	P1	P2	t	W	K
Dimension (mm)	4.0±0.15	12.0±0.1	2.0±0.1	0.35±0.03	16.0±0.2	4.5±0.1

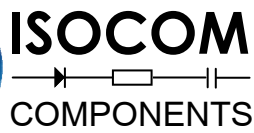


H11L1, H11L1V

IR REFLOW SOLDERING TEMPERATURE PROFILE (One Time Reflow Soldering is Recommended)



Profile Details	Conditions
Preheat <ul style="list-style-type: none">- Min Temperature (T_{SMIN})- Max Temperature (T_{SMAX})- Time T_{SMIN} to T_{SMAX} (t_s)	150°C 200°C 60s - 120s
Soldering Zone <ul style="list-style-type: none">- Peak Temperature (T_P)- Time at Peak Temperature- Liquidous Temperature (T_L)- Time within 5°C of Actual Peak Temperature ($T_P - 5^\circ\text{C}$)- Time maintained above T_L (t_L)- Ramp Up Rate (T_L to T_P)- Ramp Down Rate (T_P to T_L)	260°C 10s max 217°C 30s max 60s - 100s 3°C/s max 6°C/s max
Average Ramp Up Rate (T_{smax} to T_P)	3°C/s max
Time 25°C to Peak Temperature	8 minutes max



H11L1, H11L1V

NOTES :

- Isocom is continually improving the quality, reliability, function or design and Isocom reserves the right to make changes without further notices.
- The products shown in this publication are designed for the general use in electronic applications such as office automation equipment, communications devices, audio/visual equipment, electrical application and instrumentation.
- For equipment/application where high reliability or safety is required, such as space applications, nuclear power control equipment, medical equipment, etc., please contact our sales representatives.
- When requiring a device for any "specific" application, please contact our sales for advice.
- The contents described herein are subject to change without prior notice.
- Do not immerse device body in solder paste.

DISCLAIMER

ISOCOM is continually working to improve the quality and reliability of its products. Nevertheless, semiconductor devices in general can malfunction or fail due to their inherent electrical sensitivity and vulnerability to physical stress. It is the responsibility of the buyer, when utilizing ISOCOM products, to comply with the standards of safety in making a safe design for the entire system, and to avoid situations in which a malfunction or failure of such ISOCOM products could cause loss of human life, bodily injury or damage to property.

In developing your designs, please ensure that ISOCOM products are used within specified operating ranges as set forth in the most recent ISOCOM products specifications.

___ The ISOCOM products listed in this document are intended for usage in general electronics applications (computer, personal equipment, office equipment, measuring equipment, industrial robotics, domestic appliances, etc.). These ISOCOM products are neither intended nor warranted for usage in equipment that requires extraordinarily high quality and/or reliability or a malfunction or failure of which may cause loss of human life or bodily injury ("Unintended Usage"). Unintended Usage include atomic energy control instruments, airplane or spaceship instruments, transportation Instruments, traffic signal instruments, combustion control instruments, medical Instruments, all types of safety devices, etc.. Unintended Usage of ISOCOM products listed in this document shall be made at the customer's own risk.

___ Gallium arsenide (GaAs) is a substance used in the products described in this document. GaAs dust and fumes are toxic. Do not break, cut or pulverize the product, or use chemicals to dissolve them. When disposing of the products, follow the appropriate regulations. Do not dispose of the products with other industrial waste or with domestic garbage.

___ The products described in this document are subject to the foreign exchange and foreign trade laws.

___ The information contained herein is presented only as a guide for the applications of our products. No responsibility is assumed by ISOCOM Components for any infringements of intellectual property or other rights of the third parties which may result from its use. No license is granted by implication or otherwise under any intellectual property or other rights of ISOCOM Components or others.

___ The information contained herein is subject to change without notice.