

PRODUCT NUMBER  
57202-XXX-XXXXL F

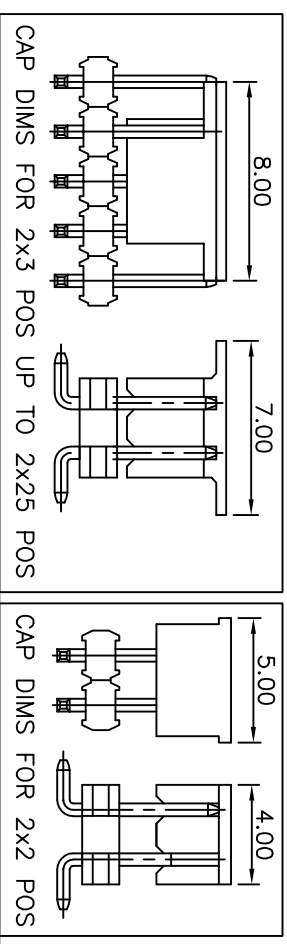
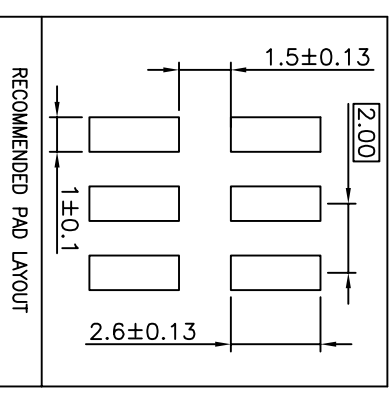
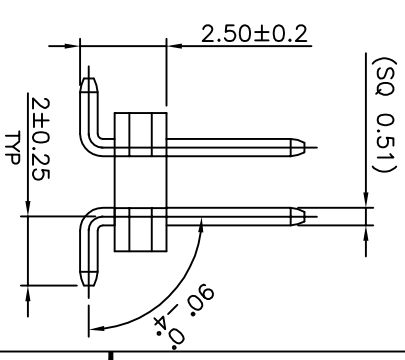
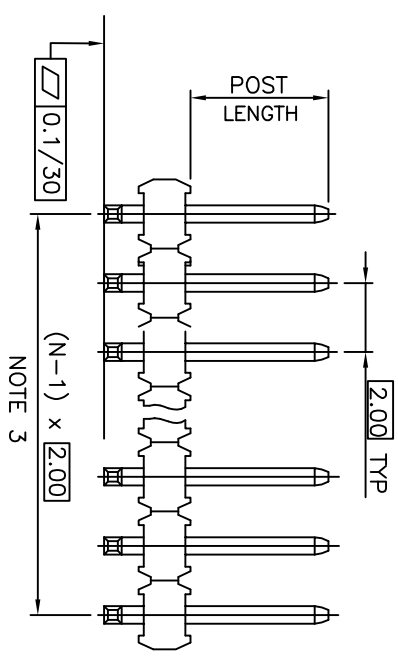
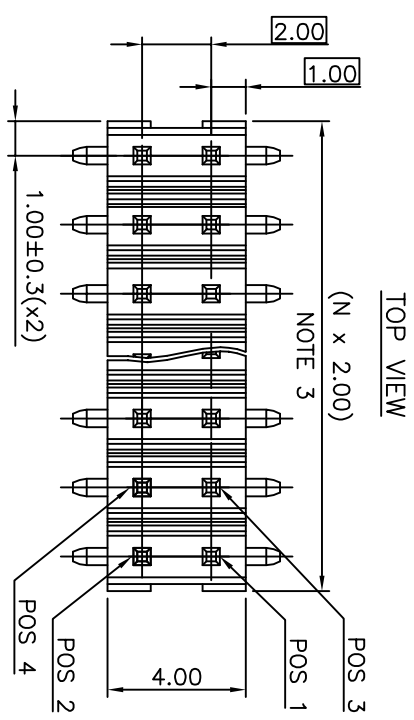
- PLATING
- S = 0.38µm GOLD/GXT ON CONTACT AREA  
2µm MIN MATTE TIN ON TAIL
  - G = 0.76µm GOLD/GXT ON CONTACT AREA  
2µm MIN MATTE TIN ON TAIL
  - F = GOLD FLASH ON CONTACT AREA  
2µm MIN MATTE TIN ON TAIL
  - T = 2-6.0µm FULL MATTE TIN
  - 1.27µm MIN NICKEL UNDERPLATING
- RoHS COMPATIBLE  
SEE NOTE 7
- POLARIZATION, SEE NOTE 6
- PACKAGING, SEE NOTE 5
- NB OF POS PER ROW : 02 TO 25

STYLE	POST LENGTH ±0.2
51	2.00
52	4.00
53	3.50
54	2.50

NOTES:

1. MATERIAL HOUSING: HIGH TEMP. THERMOPLASTIC  
UL 94V-0, COLOR BLACK
2. MATERIAL TERMINAL: COPPER ALLOY
3. TO DETERMINE DIMENSIONS:  
N = NUMBER OF POSITIONS PER ROW.
4. 7N MIN. PIN RETENTION IN EITHER DIRECTION.
5. PACKAGING:  
= STANDARD PACKAGING IN POLYBAGS  
= POLYBAGS PACKAGING WHEN POLARISATION FEATURE APPLICABLE.  
U = TUBE AVAILABLE FROM 04 TO 25 POS PER ROW.  
A = TAPE AND REEL WITH PICK UP CAP, AS AVAILABLE  
K = TAPE AND REEL WITHOUT CAP, AS AVAILABLE.
6. FOR POLARIZATION, SPECIFY POSITION NUMBER TO OMIT PIN.  
EXAMPLE : 03 = OMIT PIN POSITION 3, SEE TOP VIEW.  
OMIT FROM PRODUCT NUMBER IF THIS FEATURE IS NOT APPLICABLE.
7. RoHS COMPATIBLE PRODUCT SPECIFICATIONS

- a - PLATING:
- "LF" MEANS THE PRODUCT IS LEAD-FREE,  
2µm MINIMUM MATTE TIN OVER 1.27µm  
MINIMUM NICKEL UNDERPLATE.
  - b - MANUFACTURING PROCESS COMPATIBILITY  
- THE HOUSING WILL WITHSTAND EXPOSURE TO  
260°C PEAK TEMPERATURE FOR 30 SECONDS  
IN A CONNECTION, INFRA-RED OR VAPOR  
PHASE REFLOW OVEN.
  - c - LABELLING:
  - MEETS PACKAGING SPECS AS PER GS-14-920
  - d - LEGAL STATEMENT : SEE GS-47-0004



mat'l. code				surface			tolerance		projection		product family	
				ISO 1302	✓	ISO 406	ISO	101		MINITEK		
trf ecm no dr date				tolerances unless otherwise specified								
L F09-0087 JCO 09.09.04				angles		.X ±0.3						
M F11-0026 LMU 11.05.12				linear		XX ±0.13		mm		title		
N B-19190 LMU 14.10.24						.XXX ±0.05		scale 1:1		UNSH HEADER		
P B-19797 AMA 14.12.16 dr				L MULIN		04.05.06				2.00 mm VERTICAL SMT		
R B-19988 LMU 15.01.13 engr				JU COMPAGNON		04.11.25						
S B-20032 AMA 15.01.20 chr												
T F-23051 AMA 16.01.15 appd						JM.C		04.11.25				
sheet revision												
index sheet												