

## SLIDE-IN MOUNT CONTACTS

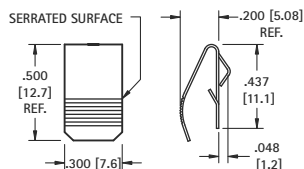


- Economical and reliable contacts are ideal for molded cases with self contained battery compartments
- Solder "ear" to facilitate soldering of wire lead
- Unique spring tension contact adjusts to variations in battery lengths
- Reliable spring tension contacts assure low contact resistance
- Clips easily onto .060 (1.52) to .070 (1.78) wall
- Sharp barbs securely anchor contact

Refer to page 34 for Battery Contact Layout & Mounting Details

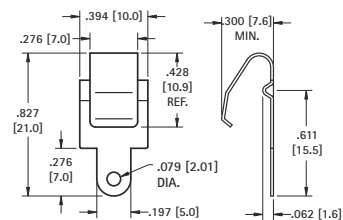
"AA" • "CR2" • "A" • "9V"

- Press fit into housing groove.



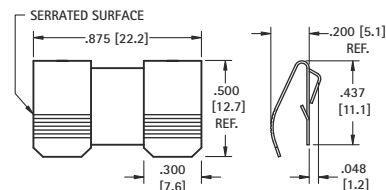
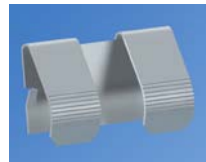
CAT. NO. 5205

MATERIAL: .012 (.30) Spring Steel, Nickel Plate



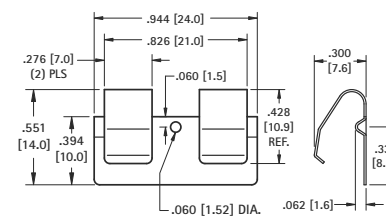
CAT. NO. 5209

MATERIAL: .012 (.30) Phosphor Bronze, Nickel Plate



CAT. NO. 5206

MATERIAL: .012 (.30) Spring Steel, Nickel Plate



CAT. NO. 5208

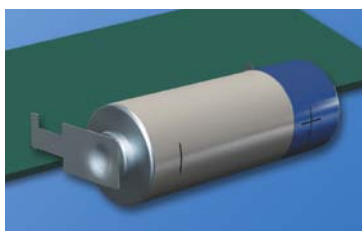
MATERIAL: .012 (.30) Phosphor Bronze, Nickel Plate

## SLIDE-IN P.C. MOUNT CONTACTS

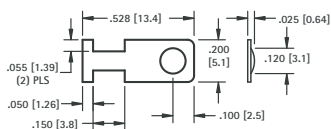
- Economical and reliable contacts
- Designed for direct placement onto PCB, no wire leads required
- Unique spring tension adjusts to variations in battery length

- Reliable spring tension assure low contact resistance and dependable connection
- Symmetrical design allows these contacts to function both as a positive and negative contacts

"AAA" • "AAAA" • "N" • "12V"



- "Off-Board" edge mounting design frees up valuable board space

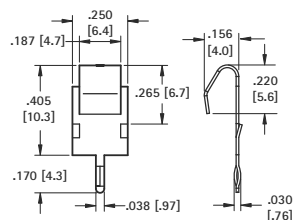


CAT. NO. 230-1

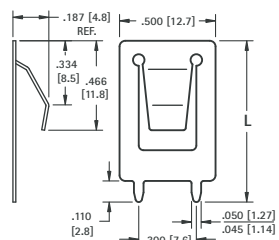
MATERIAL: .008 (.20) Spring Steel, Nickel plate

UNIVERSAL BATTERY SIZES

MATERIAL: .012 (.30) Phosphor Bronze, Tin-Nickel plate

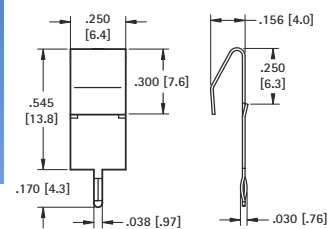


CAT. NO. 1021-1

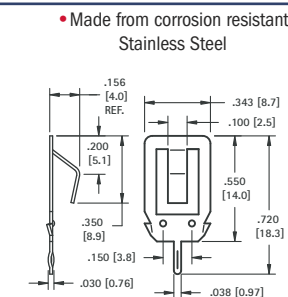


CAT. NO.	(L) Length
109-2	.840 (21.3)
109-3	1.000 (25.4)

MATERIAL: .012 (.30) Spring Steel, Nickel plate



CAT. NO. 1017-1



CAT. NO. 108-2

- Made from corrosion resistant Stainless Steel

MATERIAL: .012 (.30) Stainless Steel, Tin-Nickel plate

Tel (718) 956-8900 • Fax (718) 956-9040  
(800) 221-5510 • kec@keyelco.com

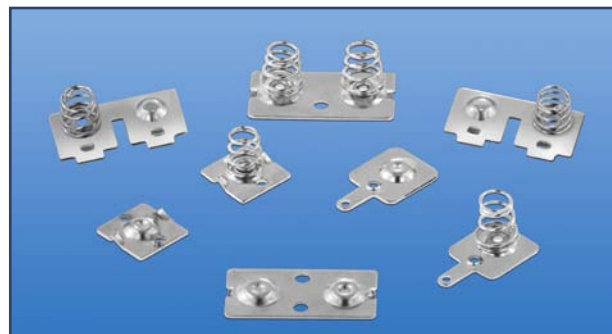
**KEYSTONE**  
RoHS COMPLIANT ~ ISO 9001 CERTIFIED

www.keyelco.com  
31-07 20th Road - Astoria, NY 11105-2017

BATTERY CONTACTS FOR MOLDED CASES

## SPRING & BUTTON CONTACTS

- Economical and reliable contacts are ideal for molded cases with self contained battery compartments
- "Solder tab" design for either wire lead or PC mounting
- Unique spring contacts adjust to variations in battery lengths
- Reliable spring contacts assure low contact resistance and a dependable connection
- Space saving, economical, excellent mechanical construction

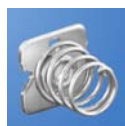


Refer to page 35 for Battery Contact Layout & Mounting Details

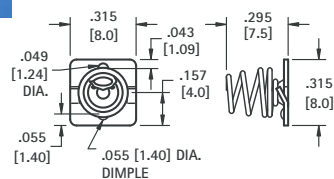
### MATERIAL:

**Plate:** .020 (.51) Steel, Nickel Plate **Spring:** Spring Steel, Nickel Plate

### "AAA" • "AAAA" • "N" • "12V"



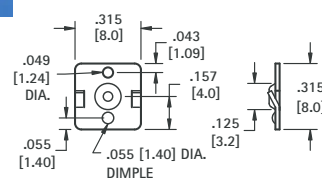
(-) NEGATIVE SPRING



CAT. NO. 5203



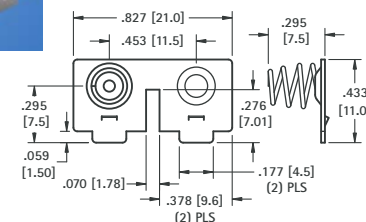
(+) POSITIVE BUTTON



CAT. NO. 5225



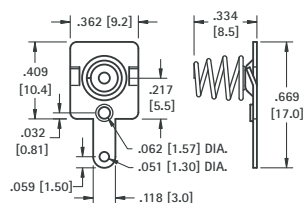
DUAL CONTACT (RIGHT)



CAT. NO. 5213



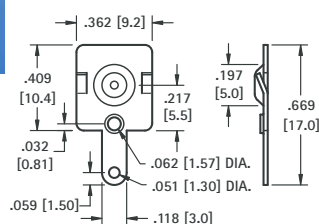
(-) NEGATIVE SPRING WITH TAB



CAT. NO. 5204



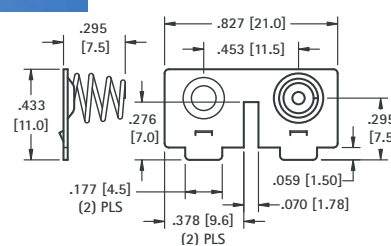
(+) POSITIVE BUTTON WITH TAB



CAT. NO. 5226



DUAL CONTACT (LEFT)

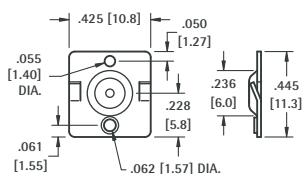


CAT. NO. 5214

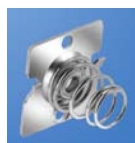
### "AA" • "CR2" • "A"



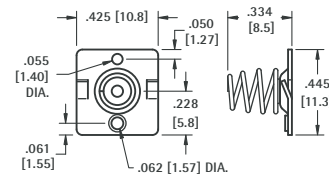
(+) POSITIVE BUTTON



CAT. NO. 5224



(-) NEGATIVE SPRING

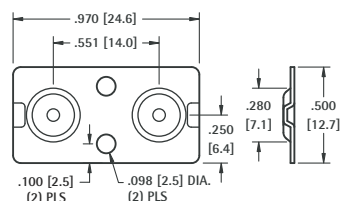


CAT. NO. 5202

### "AA"



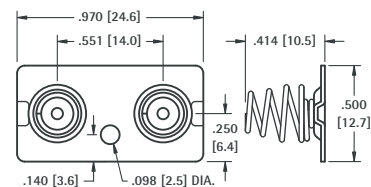
DUAL BUTTON CONTACT



CAT. NO. 5227



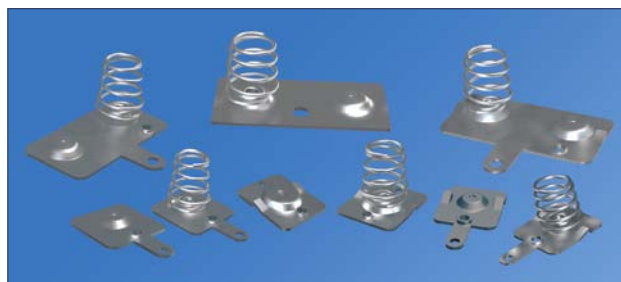
DUAL SPRING CONTACT



CAT. NO. 5228

## SPRING & BUTTON CONTACTS

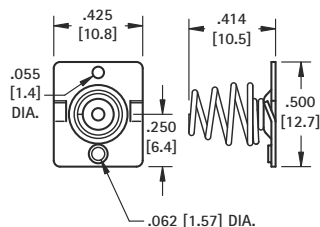
- Economical and reliable contacts are ideal for molded cases with self contained battery compartments
- "Solder tab" design for either wire lead or PC mounting
- Unique spring contacts adjust to variations in battery lengths
- Reliable spring contacts assure low contact resistance and a dependable connection
- Space saving, economical, excellent mechanical construction

**MATERIAL:**
**Plate:** .020 (.51) Steel, Nickel Plate **Spring:** Spring Steel, Nickel Plate


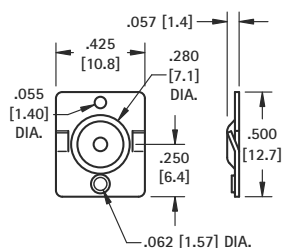
Refer to page 35 for Battery Contact Layout &amp; Mounting Details

**"AA" • "CR2" • "A"**

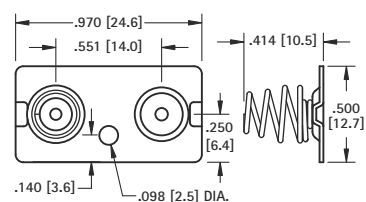
(-) NEGATIVE SPRING


**CAT. NO. 5222**

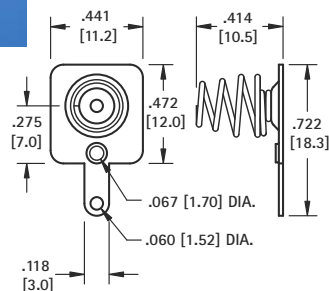
(+) POSITIVE BUTTON


**CAT. NO. 5221**

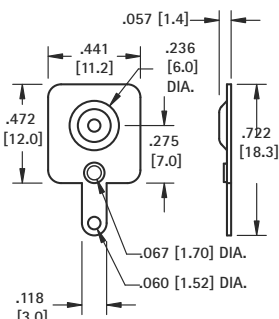
DUAL CONTACT ("AA" ONLY)


**CAT. NO. 5212** Left or Right

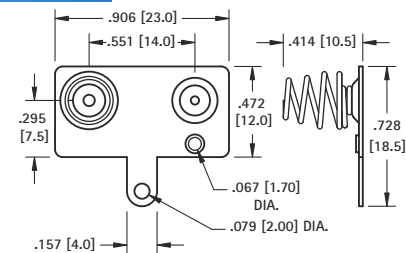
(-) NEGATIVE SPRING WITH TAB


**CAT. NO. 5201**

(+) POSITIVE BUTTON WITH TAB

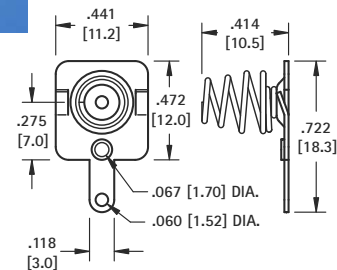

**CAT. NO. 5223**

DUAL CONTACT ("AA" ONLY)

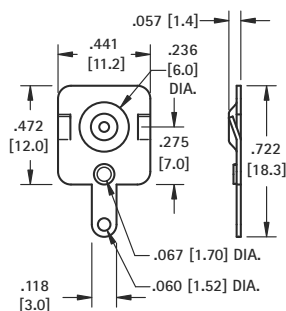

**CAT. NO. 5210** Left

**CAT. NO. 5211** Right (Shown)

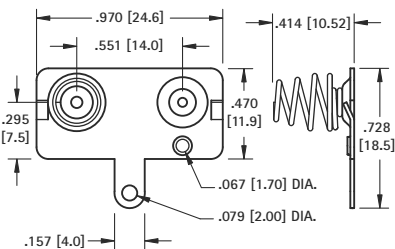
(-) NEGATIVE SPRING WITH TAB/LANCE


**CAT. NO. 5220**

(+) POSITIVE BUTTON WITH TAB/LANCE


**CAT. NO. 5219**

DUAL CONTACT WITH TAB ("AA" ONLY)


**CAT. NO. 5218** Left

**CAT. NO. 5217** Right (Shown)

 Tel (718) 956-8900 • Fax (718) 956-9040  
 (800) 221-5510 • kec@keyelco.com

**KEYSTONE**  
 RoHS COMPLIANT ~ ISO 9001 CERTIFIED

 www.keyelco.com  
 31-07 20th Road - Astoria, NY 11105-2017

BATTERY CONTACTS FOR MOLDED CASES

## SPRING & BUTTON CONTACTS

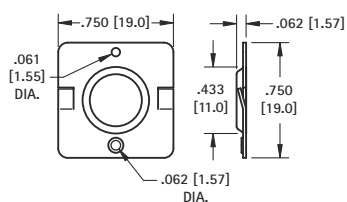
- Economical and reliable contacts are ideal for molded cases with self contained battery compartments
- "Solder tab" design for either wire lead or PC mounting
- Unique spring contacts adjust to variations in battery lengths
- Reliable spring contacts assure low contact resistance and a dependable connection
- Space saving, economical, excellent mechanical construction

**MATERIAL:**
**Plate:** .020 (.51) Steel, Nickel Plate **Spring:** Spring Steel, Nickel Plate

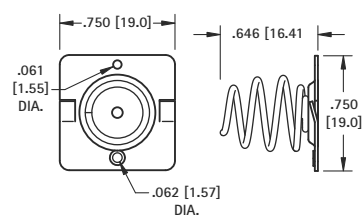

Refer to page 35 for Battery Contact Layout &amp; Mounting Details

**"C" CELL**

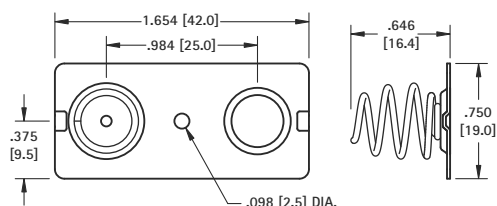
(+) POSITIVE BUTTON


**CAT. NO. 5240**

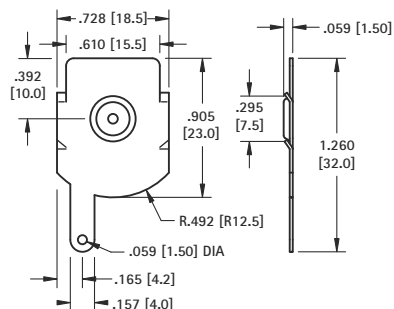
(-) NEGATIVE SPRING


**CAT. NO. 5241**

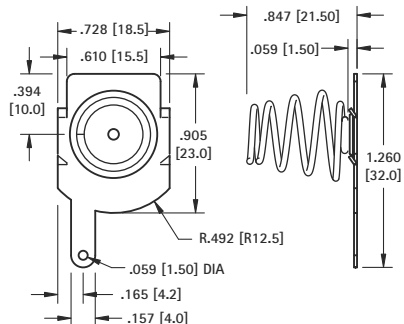
DUAL CONTACT


**CAT. NO. 5242**
**"D" CELL**

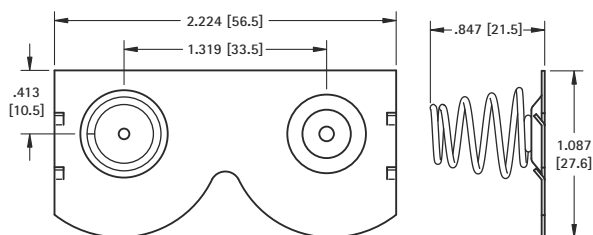
(+) POSITIVE BUTTON


**CAT. NO. 5250**

(-) NEGATIVE SPRING


**CAT. NO. 5251**

DUAL CONTACT


**CAT. NO. 5253** Left

**CAT. NO. 5252** Right (Shown)

BATTERY CONTACTS FOR MOLDED CASES