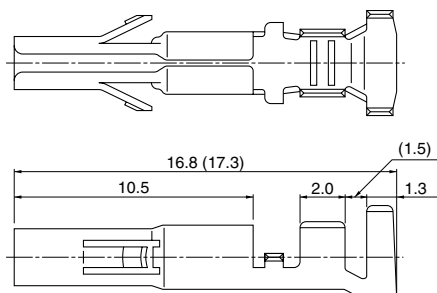


Contact



Dimensions in [] apply to the SLC-22T-2.0 two-wire crimping type.

One-wire crimping type

Model No.	Applicable wire			Q'ty / reel
	mm ²	AWG #	Insulation O.D. (mm)	
SLC-21T-2.0	0.33 to 0.75	22 to 18	1.7 to 2.1	4,000

Material and Finish

Brass, tin-plated (reflow treatment)

RoHS compliance

Two-wire crimping type

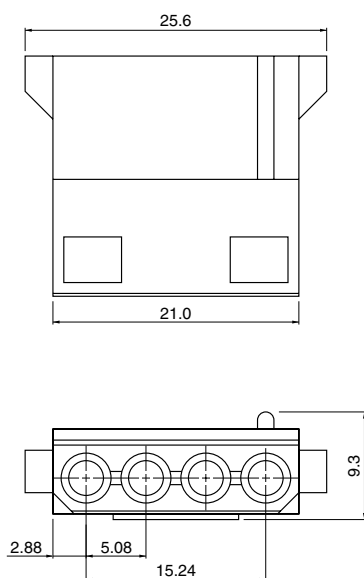
Model No.	Combination of applicable wires UL1007 AWG #	Q'ty / reel
SLC-22T-2.0	20+20, 20+18, 18+18	3,000

Material and Finish

Brass, tin-plated (reflow treatment)

RoHS compliance

Housing



Model No.	Q'ty / box
LCP-04	500

Material

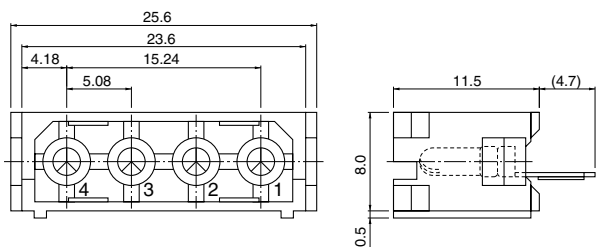
PA 6, UL94V-0, natural (white)

RoHS compliance

LC CONNECTOR

Shrouded header

Top entry type

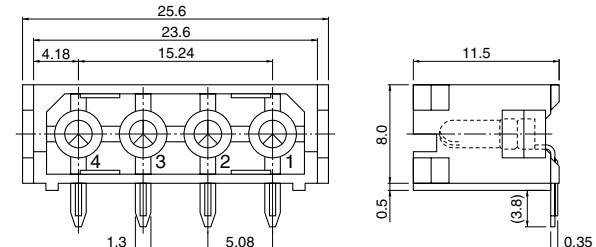


Top entry type

Model No.	Q'ty / box
LC-04T	100
Material and Finish	
Contact: Brass, tin-plated (reflow treatment) Housing: PA 66, UL94V-0, natural (white)	

RoHS compliance

Side entry type Shape A

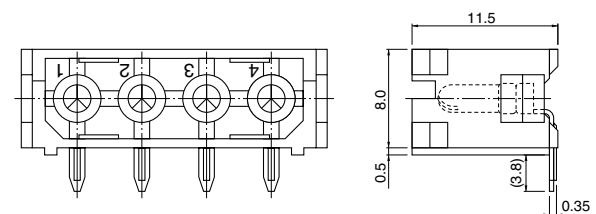


Side entry type

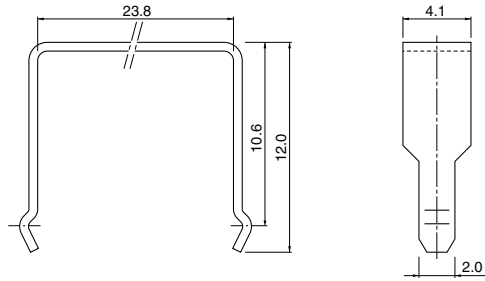
Shape	Model No.	Q'ty / box
A	LC-04A	100
B	LC-04B	
Material and Finish		
Contact: Brass, tin-plated (reflow treatment) Housing: PA 66, UL94V-0, natural (white)		

RoHS compliance

Shape B



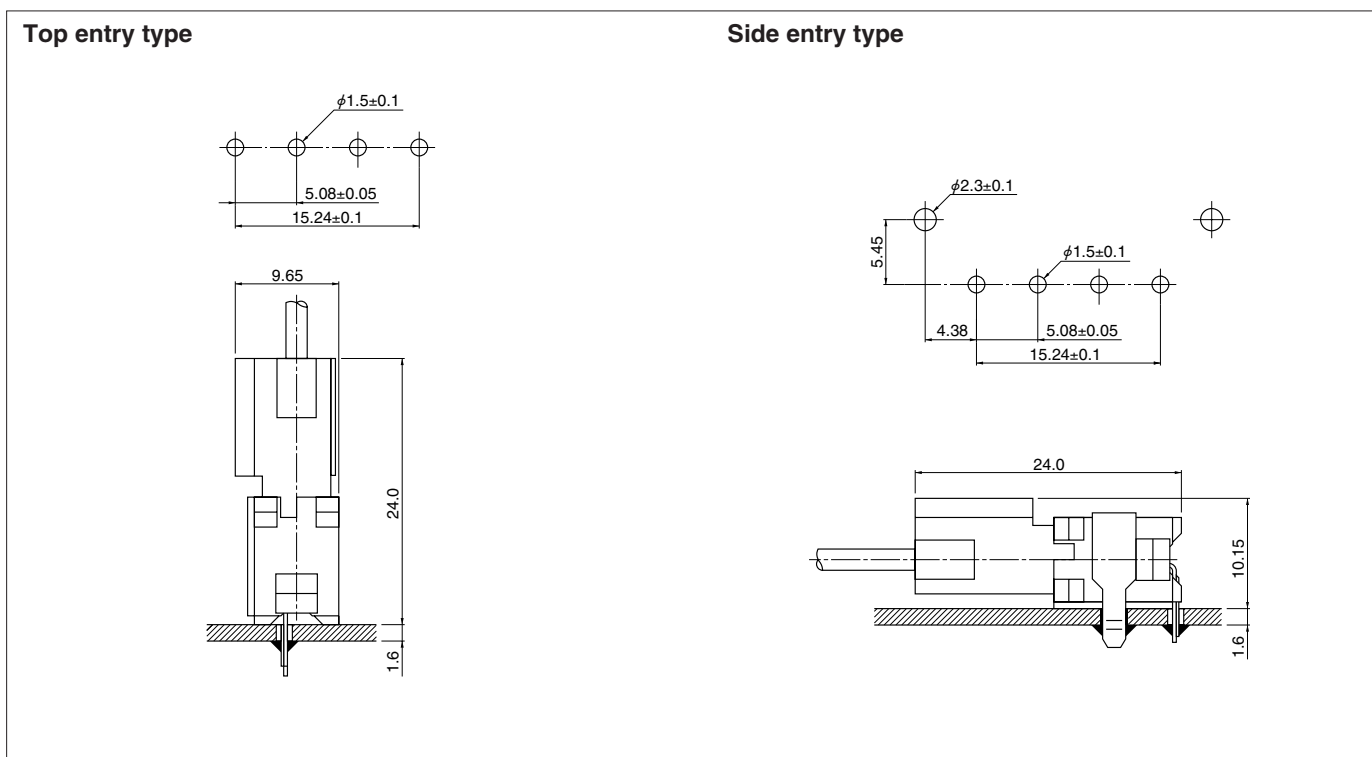
Housing clamp



Model No.	Q'ty / box
LCC-04	500
Material and Finish	
Brass, tin-plated (reflow treatment)	

RoHS compliance

PC board layout (viewed from component side) and Assembly layout



Note:

1. Tolerances are non-cumulative: $\pm 0.05\text{mm}$ for all centers.

2. Hole dimensions differ according to the kind of PC board and piercing method. The dimensions above should serve as a guideline. Contact JST for details.

Crimping machine, Applicator

Contact	Crimping machine	Crimp applicator	Dies	Crimp applicator with dies
SLC-21T-2.0	AP-K2N	MKS-L	MK/SLC-21-20	APLMK SLC21-20
		—	—	—

Contact	Crimping machine	Crimp applicator	Dies	Crimp applicator with dies
SLC-22T-2.0	AP-K2N	MKS-L	MK/SLC-22-20	APLMK SLC22-20
		—	—	—