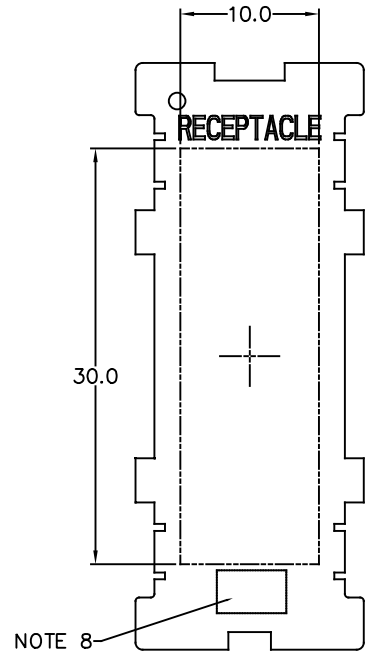
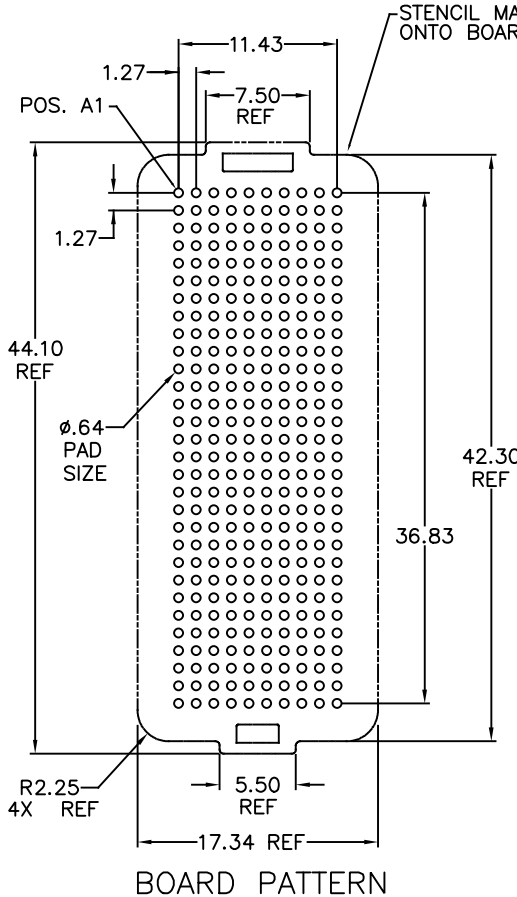


PRODUCT NUMBER  
SEE TABLE

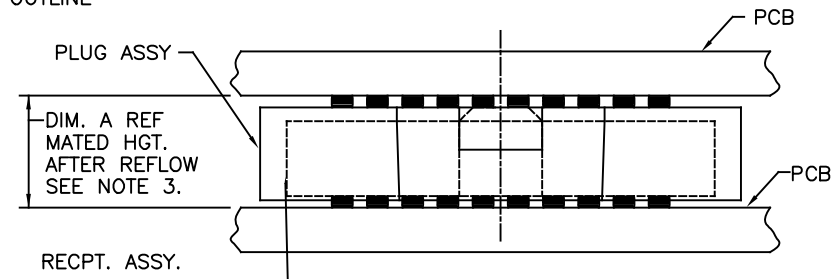


NOTE 8

FLAT AREA FOR  
PICK-UP CAP



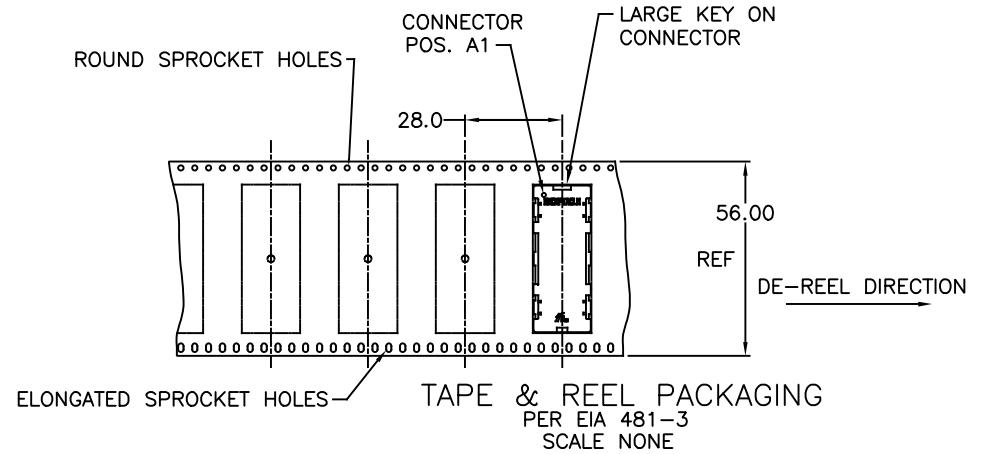
BOARD PATTERN





MATED HEIGHT TABLE		
DIM. A	PLUG ASSY. P/N	RECPT. ASSY. P/N
4.0	84500	84501
10.0	84578	84501

MATED HEIGHT AFTER REFLOW IS BASED ON Ø.64mm PAD (METAL-DEFINED) AND .13mm SOLDER PASTE STENCIL THICKNESS. SEE NOTE 3.

END VIEW — MATED CONNECTORS SCALE NONE

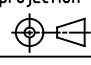
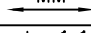


mat'l. code SEE-NOTE-1				surface ASMEY14.5 ✓		tolerance ASMEY14.5		projection 		product family MEG-ARRAY						
ltr	ecn no	dr	date	tolerances unless otherwise specified							title 4MM-RECPTACLE-ASSEMBLY. 10X30=300-POS					
T				angles		linear	.X±.3									
							.XX±.10									
				0°±2°			.XXX±.050									
				dr	D.WAUGHEN		1998-12-16		Amphenol FCi	dwg no				sheet 2 of 4		size
				engr	D.HARPER		1998-12-16			84501				A4		
				chr	D.HARPER		1998-12-16									
				appd	D.HARPER		1998-12-16			type CUSTOMER Drawing						
sheet index		revision														
		sheet														

PRODUCT NUMBER	PICK-UP CAP (NATURAL OR BLACK IN COLOR)	CONTACT PLATING AND THICKNESS	SOLDER BALL	NOTES
84501-001	YES	15μ" (.38μm) Au	SnPb	
84501-001BF	YES	15μ" (.38μm) Au	SnPb	12
84501-001LF	YES	15μ" (.38μm) Au	LEAD FREE	6
84501-001BLF	YES	15μ" (.38μm) Au	LEAD FREE	6 AND 12
84501-091	YES	15μ" (.38μm) GXT	SnPb	
84501-091BF	YES	15μ" (.38μm) GXT	SnPb	12
84501-091LF	YES	15μ" (.38μm) GXT	LEAD FREE	6
84501-091BLF	YES	15μ" (.38μm) GXT	LEAD FREE	6 AND 12
84501-093LF	YES	15μ" (.38μm) GXT	LEAD FREE	6 AND 11
84501-093BLF	YES	15μ" (.38μm) GXT	LEAD FREE	6, 11 AND 12
84501-101	YES	30μ" (.76μm) Au	SnPb	
84501-101BF	YES	30μ" (.76μm) Au	SnPb	12
84501-101LF	YES	30μ" (.76μm) Au	LEAD FREE	6
84501-101BLF	YES	30μ" (.76μm) GXT	LEAD FREE	6 AND 12
84501-191	YES	30μ" (.76μm) Au	SnPb	
84501-191BF	YES	30μ" (.76μm) Au	SnPb	12
84501-191LF	YES	30μ" (.76μm) Au	LEAD FREE	6
84501-191BLF	YES	30μ" (.76μm) Au	LEAD FREE	6 AND 12
84501-201	YES	50μ" (1.27μm) Au SPECIAL	SnPb	4
84501-201BF	YES	50μ" (1.27μm) Au SPECIAL	SnPb	4 AND 12
84501-201LF	YES	50μ" (1.27μm) Au SPECIAL	LEAD FREE	4 AND 6
84501-201BLF	YES	50μ" (1.27μm) Au SPECIAL	LEAD FREE	4, 6 AND 12
84501-291	YES	50μ" (1.27μm) GXT SPECIAL	SnPb	4
84501-291BF	YES	50μ" (1.27μm) GXT SPECIAL	SnPb	4 AND 12
84501-291LF	YES	50μ" (1.27μm) GXT SPECIAL	LEAD FREE	4 AND 6
84501-291BLF	YES	50μ" (1.27μm) GXT SPECIAL	LEAD FREE	6 AND 12
84501-A01	YES	30μ" (.76μm) Au SPECIAL	SnPb	7
84501-A01BF	YES	30μ" (.76μm) Au SPECIAL	SnPb	7 AND 12
84501-A01LF	YES	30μ" (.76μm) Au SPECIAL	LEAD FREE	6 AND 7
84501-A01BLF	YES	30μ" (.76μm) Au SPECIAL	LEAD FREE	6, 7 AND 12
<del>84501-301</del>	<del>YES</del>	<del>15μ" (.38μm) Au SPECIAL</del>	<del>SnPb</del>	<del>7</del>
<del>84501-301LF</del>	<del>YES</del>	<del>15μ" (.38μm) Au SPECIAL</del>	<del>LEAD FREE</del>	<del>6 &amp; 7</del>
<del>84501-401</del>	<del>YES</del>	<del>30μ" (.76μm) Au SPECIAL</del>	<del>SnPb</del>	<del>7</del>
<del>84501-401LF</del>	<del>YES</del>	<del>30μ" (.76μm) Au SPECIAL</del>	<del>LEAD FREE</del>	<del>6 &amp; 7</del>
<del>84501-501</del>	<del>YES</del>	<del>Au SPECIAL</del>	<del>SnPb</del>	<del>4 &amp; 7</del>
<del>84501-501LF</del>	<del>YES</del>	<del>Au SPECIAL</del>	<del>SnPb</del>	<del>4, 6 &amp; 7</del>



A

mat'l. code SEE-NOTE-1				surface ASMEY14.5	tolerance ASMEY14.5	projection 	product family MEG-ARRAY			
ltr	ecn no	dr	date	angles	linear	MM 	title 4MM-RECPTACLE-ASSEMBLY. 10X30=300-POS			
T					.X±.3					
				0°±2°	.XX±.10					
					.XXX±.050	scale 1:1	Amphenol FCI			
				dr	D.WAUGHEN	1998-12-18				
				engr	D.HARPER	1998-12-18				
				chr	D.HARPER	1998-12-18	dwg no 84501			
				appd	D.HARPER	1998-12-18				
sheet index	revision sheet	T	T	T			type CUSTOMER Drawing			
		1	2	3						


5

B

NOTES:

1. MATERIAL  
HOUSING: LCP  
CONTACT: COPPER ALLOY  
  
PLATING  
CONTACT: (SEE TABLE ON SHEET3)  
SOLDER BALL: (SEE TABLE ON SHEET3)  
EUTECTIC SnPb OR LEAD FREE  
95.5Sn/4Ag/0.5Cu
2. SOLDER BALLS WILL NOT BE PERFECT SPHERICAL SHAPE DUE TO REFLOW ATTACHMENT.
3. MATED HEIGHT EFFECTED BY CUSTOMER'S PCB PAD SIZE, PLATING, SOLDER REFLOW PROFILE, & SOLDER PASTE.
4. PLATING FOR -2XX SERIES PRODUCT NUMBERS MEET THE REQUIREMENTS OF GR-1217-CORE, CENTRAL OFFICE ENVIRONMENT, (25 YEAR LIFE EXPECTANCY). THE CONTACTS IN THESE PRODUCT NUMBERS ALSO HAVE SPECIAL CONTACT GEOMETRY.
5. FOR PROPER APPLICATION FOLLOW FCI APPLICATION SPECIFICATION GS-20-033 LEAD FREE SOLDER BALLS WILL NOT SOLDER PROPERLY IN A LEADED SOLDER PROCESS DUE TO A HIGHER REFLOW TEMPERATURE. LEAD FREE PRODUCT IS THERFORE NOT BACKWARDS COMPATIBLE WITH LEADED OR SOME SOLDERING APPLICATIONS. REFERENCE FCI APPLICATION SPECIFICATION.
6. THIS PRODUCT MEETS EUROPEAN UNION DIRECTIVES AND OTHER COUNTRY REGULATIONS AS DESCRIBED IN GS-47-0004 PRODUCT MEETING THIS DIRECTIVE IS IDENTIFIED IN THE LOT CODE NUMBER MARKED ON EACH PART BY HAVING AN "X" IN THE SEVENTH CHARACTER POSITION.
7. 84501-A01 AND -A01LF ARE CUSTOMER SPECIALS.

8. CURRENT COMPANY LOGO TO BE VISIBLE IN APPROXIMATE AREA SHOWN.
9. 84501-301, -301LF, -401, -401LF, -501 and -501LF ARE OBSOLETE.

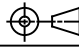
10. A  SYMBOL WILL BE NEXT TO ANY DIMENSION, NEW VIEW OR NOTE WHICH HAS BEEN MODIFIED WITH THE CURRENT DRAWING REVISION



11. 84501-093LF AND 84501-093BLF HAVE A SPECIAL CAP



12. FOR THESE DASH NUMBERS, PRODUCT IS BERYLLIUM FREE

mat'l. code SEE-NOTE-1				surface ASMEY14.5	tolerance ASMEY14.5	projection 	product family MEG-ARRAY			
ltr	ecn no	dr	date	tolerances unless otherwise specified		MM scale 1:1	title 4MM-RECPTACLE-ASSEMBLY. 10X30=300-POS			
T				angles	.X±.3		dwg no 84501 sheet 4 of 4 size A4			
				linear	.XX±.10					
				0°±2°	.XXX±.050					
				dr	D.WAUGHEN 1998-12-18	Amphenol FCI	type CUSTOMER Drawing			
				enrg	D.HARPER 1998-12-18					
				chr	D.HARPER 1998-12-18					
				appd	D.HARPER 1998-12-18					
sheet index	revision sheet									