

RSP-122811-02

REVISION

0	TP	R SKEES
3/28/2006	ECN-57702	
ISSUE FOR REVIEW		
A	TP	L PAPP
10/30/2007	ECN-82491	
RELEASE FOR PRODUCTION & CHG PACKAGING FROM BULK TO TAPE & REEL		
B	JB	L PAPP
6/12/2009	ECN-111850	
NOTES: ADD NOTE 4		
C	JB	J Hahn
9/15/2009	ECN-116805	
RECOMMENDED FOOTPRINT PATTERN: ADD DIMS 0.6±0.05 & 1.00±0.05		

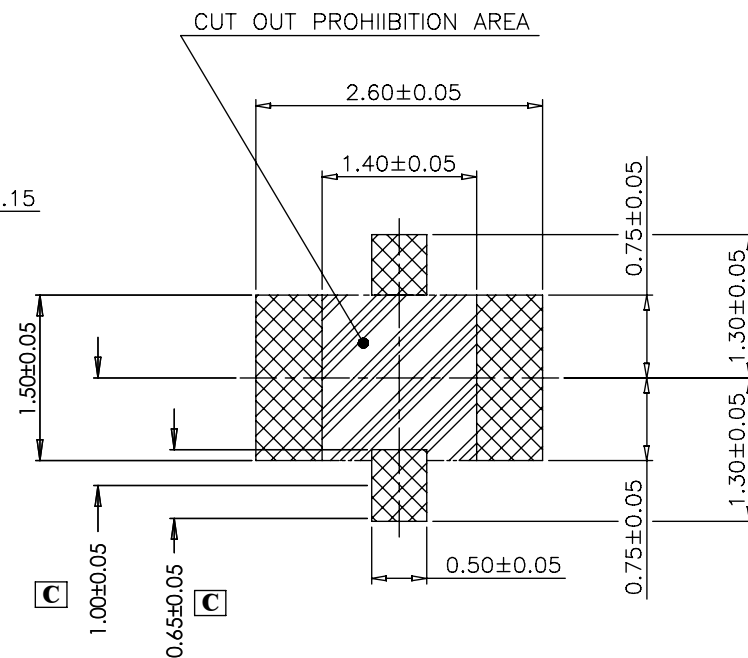
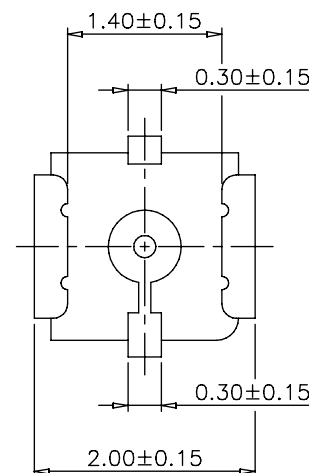
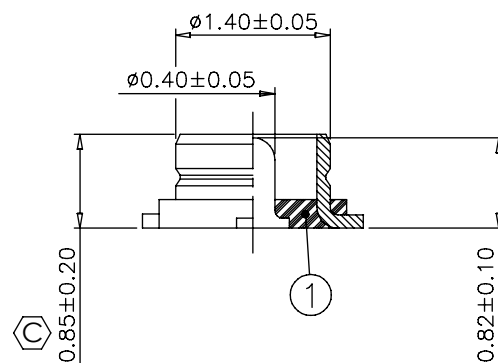
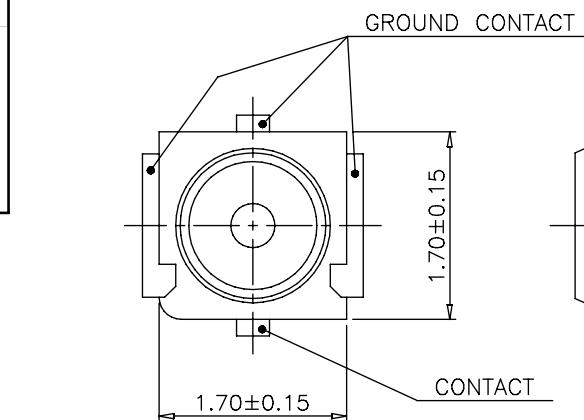
NOTES:

1. NOT AVAILABLE AS STANDARD.
2. Ⓢ REPRESENTS A CRITICAL DIMENSION.
3. PARTS TO BE PACKAGED IN TAPE & REEL.
4. MULTIPLES OF 2500 REQUIRED TO PACKAGE ON A REEL.
QUANTITIES UNDER 2500 PCS WILL BE SHIPPED IN POCKETS
WITH COVER TAPE BUT NOT ON A REEL.

SPECIFICATIONS:

ELECTRICAL RATINGS

Impedance	50 ohm
Applicable Frequency	0 ~ 6 GHz
V.S.W.R.	1.5 max.



RECOMMENDED FOOTPRINT PATTERN

ACCEPTANCE OF DRAWING
ACCEPTED WITH DEVIATIONS LISTED

DATE:

COMPANY:

CUSTOMER SIGNATURE

PRINTED NAME

PHONE NO:

FAX NO:

UNLESS OTHERWISE SPECIFIED,
DIMENSIONS ARE IN MILLIMETERS.

TOLERANCES ARE:

DECIMALS ANGLES
.XX: ±.10 5°
.XXX: ±.05

PROPRIETARY NOTE

THIS DOCUMENT CONTAINS INFORMATION
CONFIDENTIAL AND PROPRIETARY TO
SAMTEC, INC. AND SHALL NOT BE REPRODUCED
OR TRANSFERRED TO OTHER DOCUMENTS OR
DISCLOSED TO OTHERS OR USED FOR ANY
PURPOSE OTHER THAN THAT WHICH IT WAS
OBTAINED WITHOUT THE EXPRESSED WRITTEN
CONSENT OF SAMTEC, INC.

samtec

520 PARK EAST BLVD, NEW ALBANY, IN 47150
PHONE: 812-944-6733 FAX: 812-948-5047
fromparent+e-Mail: info@SAMTEC.com

code: 55322

DO NOT SCALE DRAWING

SHEET SCALE: 1:1

DESCRIPTION:

I-PEX MHF III CONNECTOR RECEPTACLE

DWG. NO.

RSP-122811-02

BY: TIM P.

03/28/2006

SHEET 1 OF 1

ITEM NO. PART NUMBER

1 RSP-122811-02