

Kingbright**PHOTOCOUPLER*****Absolute Maximum Ratings (Ta=25°C)**

Parameter		Symbol	Rating	Unit
Input	Forward current	IF	±50	mA
	Power dissipation	P	70	mW
Output	Collector-emitter voltage	VCEO	35	V
	Emitter-collector voltage	VECO	6	V
	Collector current	IC	50	mA
	Collector power dissipation	PC	150	mW
Total power dissipation		P tot	170	mW
*1 Isolation voltage		V iso	3750	Vrms
Operating temperature		T opr	-30 to +100	°C
Storage temperature		T stg	-40 to +125	°C
*2 Soldering temperature		T sol	260	°C

*1 40 to 60%RH, AC for 1 minute.

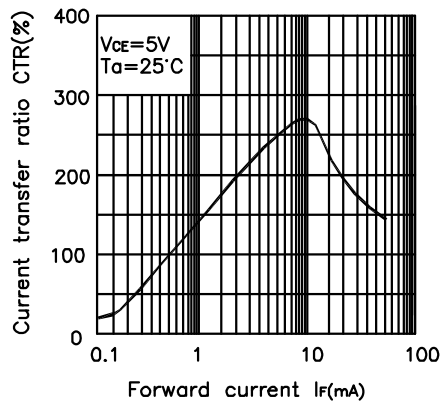
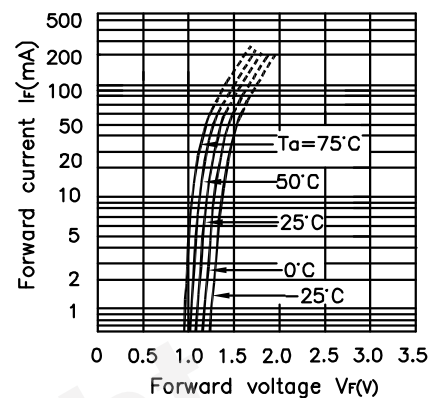
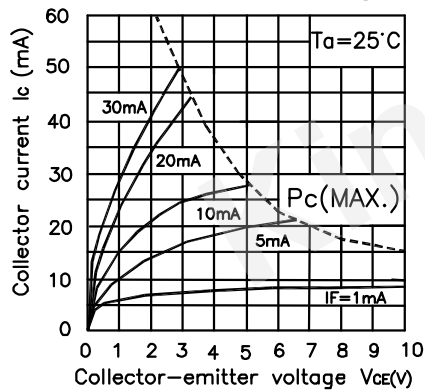
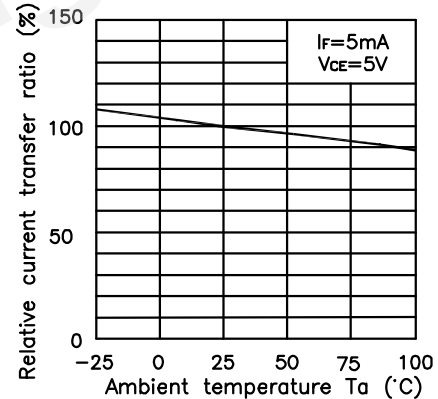
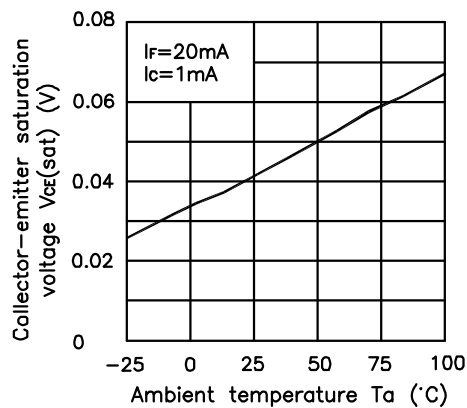
*2 For 10 seconds.

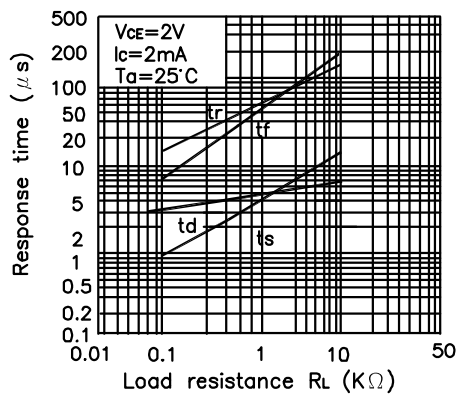
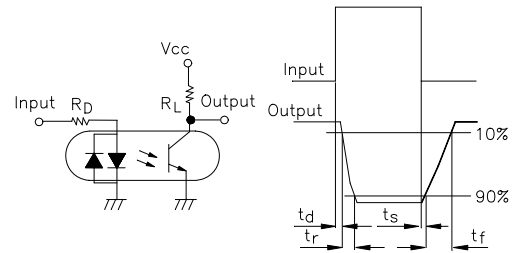
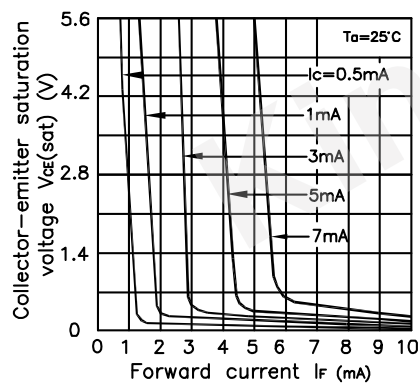
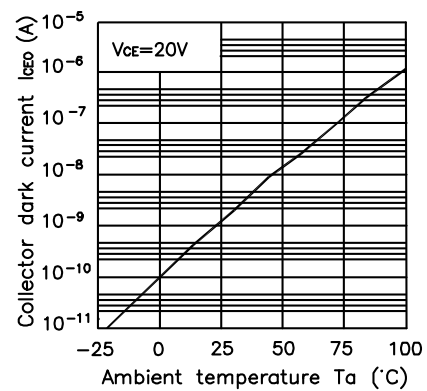
*3 Relative humidity levels maintained between 40% and 60% in production area are recommended to avoid the build-up of static electricity – Ref JEDEC/JESD625-A and JEDEC/J-STD-033.

***Electro-optical Characteristics**

Parameter			Symbol	Conditions	Min.	Typ.	Max.	Unit
Input	Forward voltage		VF	IF=± 20mA	-	1.2	1.4	V
	Peak forward voltage		VFM	IFM=0.5A	-	-	3.0	V
Output	Collector dark current		ICEO	Vce=20V IF=0	-	-	10 ⁻⁷	A
	Collector-emitter breakdown voltage		BV _{CEO}	IC=0.1mA IF=0	35	-	-	V
	Emitter-collector breakdown voltage		BV _{ECO}	IE=10uA IF=0	6	-	-	V
Transfer characteristics	Current transfer ration		CTR	IF=± 1mA Vce=5V	20	-	400	%
	Collector-emitter saturation voltage		VCE (sat)	IF=± 20mA IC=1mA	-	0.1	0.2	V
	Response time	Rise time	tr	Vce=2V IC=2mA RL=100Ω	-	4	18	uS
		Fall time	tf		-	3	18	uS

Model No.	Rank mark	CTR(%)
KB354N1T	A	50 to 150
KB354NT	L	20 to 50
	A	50 to 150
	B	150 to 300

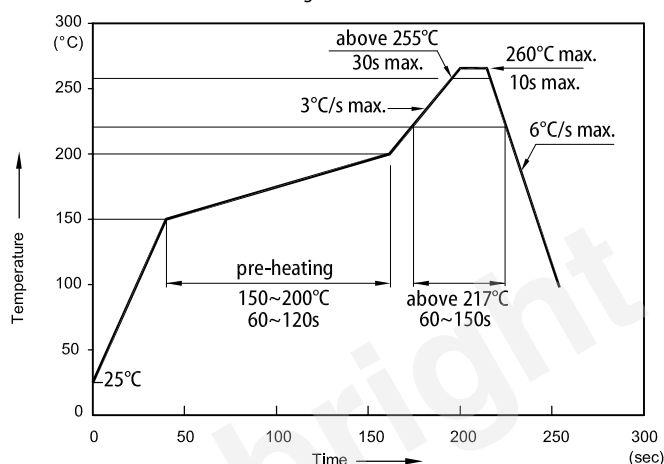
Kingbright**PHOTOCOUPLER****Fig. 1 Current Transfer vs. Forward Current****Fig. 2 Forward Current vs. Forward voltage****Fig. 3 Collector Current vs. Collector-emitter Voltage****Fig. 4 Forward Current vs. Ambient Temperature****Fig. 5 Collector-emitter Saturation Voltage vs. Ambient Temperature**

Kingbright**PHOTOCOUPLER****Fig. 6 Response Time vs. Load Resistance****Test Circuit for Response Time****Fig. 7 Collector-emitter Saturation Voltage vs. Forward Current****Fig. 8 Collector Dark Current vs. Ambient Temperature**

Kingbright**PHOTOCOUPLER*****NOTES ON HANDLING****1.Cautions regarding noise**

Be aware that power is suddenly into the componment any surge current may cause damage happen, even if the voltage is within the absolute maximum ratings.

Reflow Soldering Profile for Lead-free SMD Process



Notes:

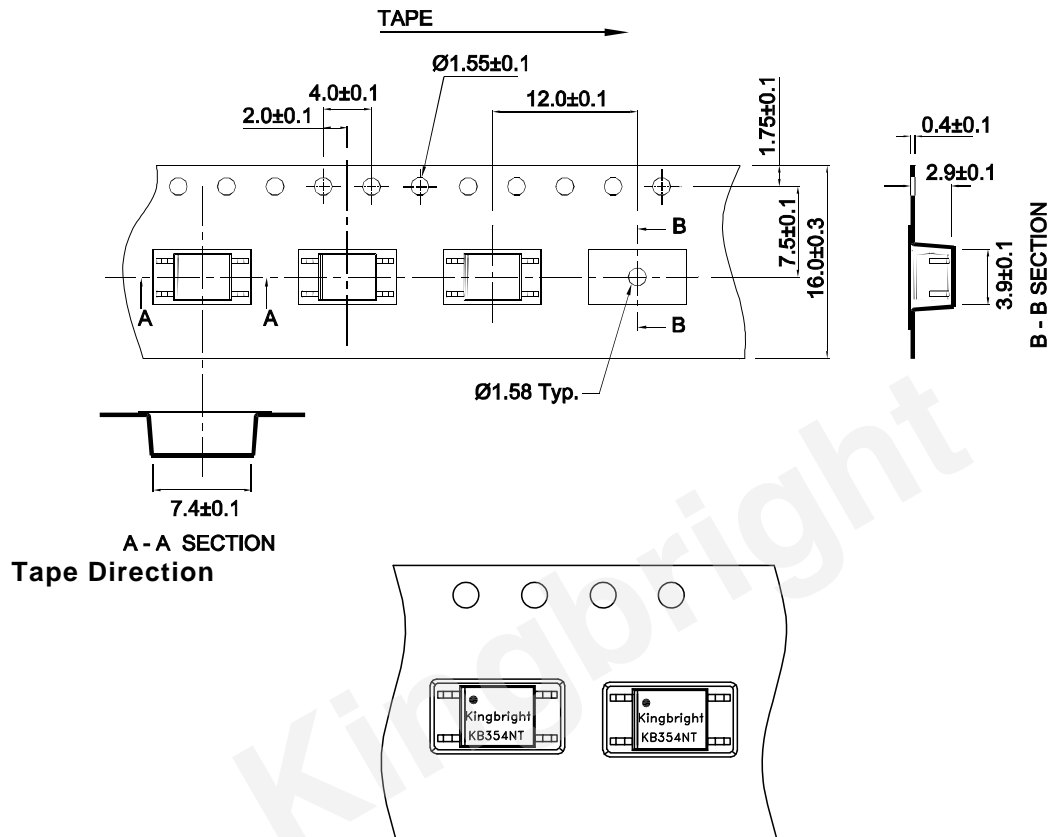
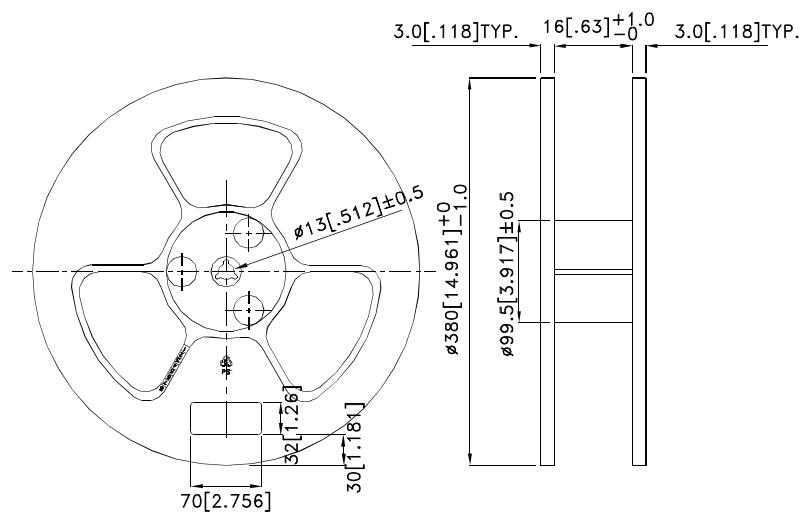
1. Don't cause stress to the LEDs while it is exposed to high temperature.
2. The maximum number of reflow soldering passes is 2 times.
3. Reflow soldering is recommended. Other soldering methods are not recommended as they might cause damage to the product.

CAUTION

Within this device there exists GaAs (Gallium Arsenide) material which is a harmful substance if ingested. GaAs dust and fumes are toxic. Do not break, cut or pulverize the product, or use chemicals to dissolve them.

RESTRICTIONS ON PRODUCT USE

- The information in this document is subject to change without notice. Before using this document, please confirm that this is the latest version. Not all devices / types available in every country.
- We are mention about our product quality stablity, semiconductor devices in general can malfunction or fail due to their inherent electrical sensitivity and vulnerability to physical stress. It is the responsibility of the buyer, when utilizing KINGBRIGHT products, to observe standards of safety, and to a avoid situations in which a malfunction or failure of a KINGBRIGHT product could cause loss of human life, bodily injury or damage to property. In developing your designs, please ensure that KINGBRIGHT products are used within specified operating ranges as set forth in the most recent products specifications.

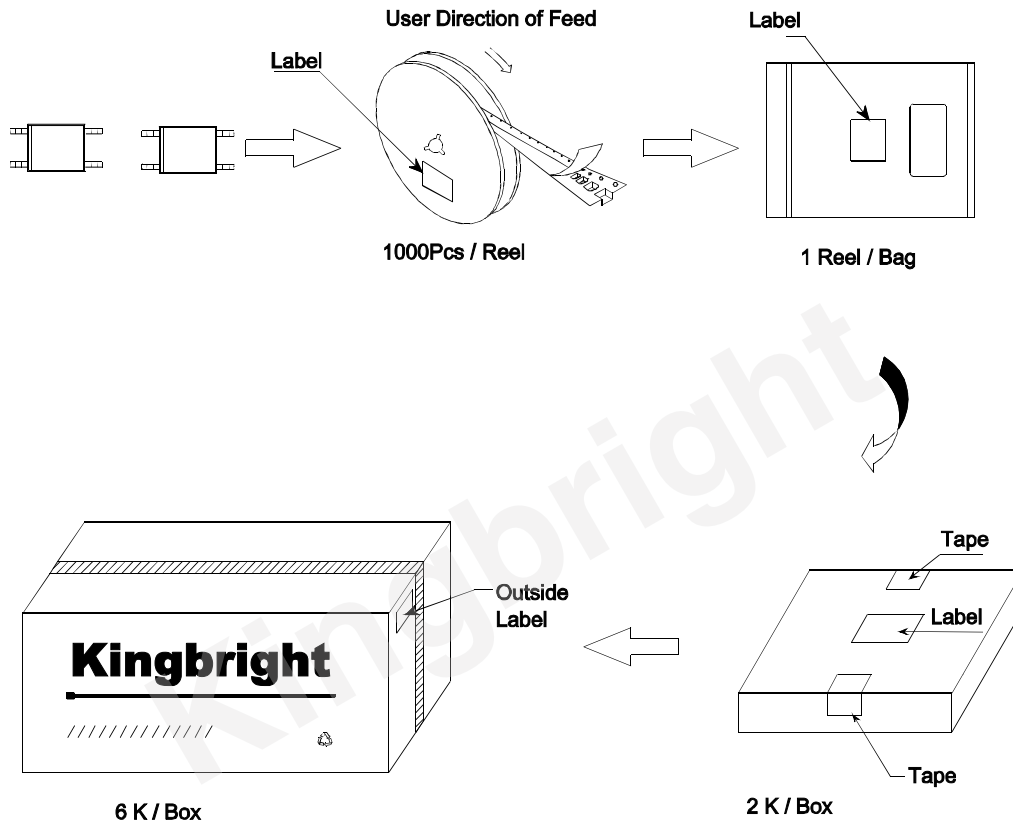
Kingbright**PHOTOCOUPLER****Outline and Dimension (Tape)**
(Units : mm)**Outline and Dimension (Reel)****Packing:1000pcs/reel**



Kingbright

PHOTOCOUPLER

PACKING & LABEL SPECIFICATIONS

KB354NT



Kingbright		XXXXXXXXXX-XXXX	
P/NO: XXXXXXXX			
QTY: XXXXpcs			
S/N: XXXX			
CODE: XXX			
COUNTRY: CN		QC DATE: XXX XX XXXX PASSED	
LOT NO:			
			
XXXXXXXXXX-XXXX			
1		RoHS Compliant	