

Fig. 1, Power Dissipation vs. Ambient Temperature (Note 3)

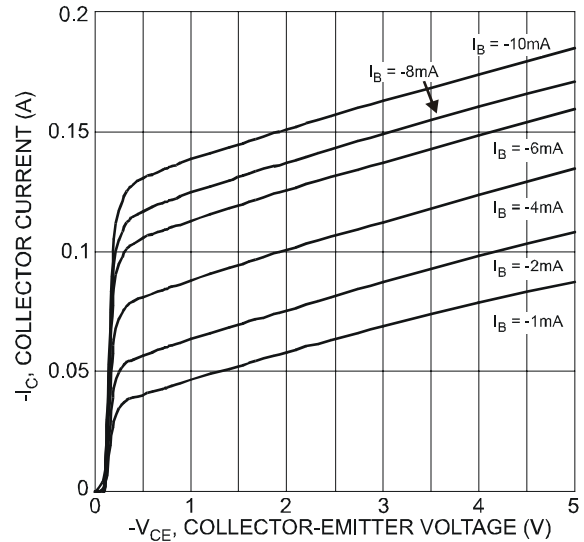


Fig. 2, Typical Collector Current vs. Collector-Emitter Voltage

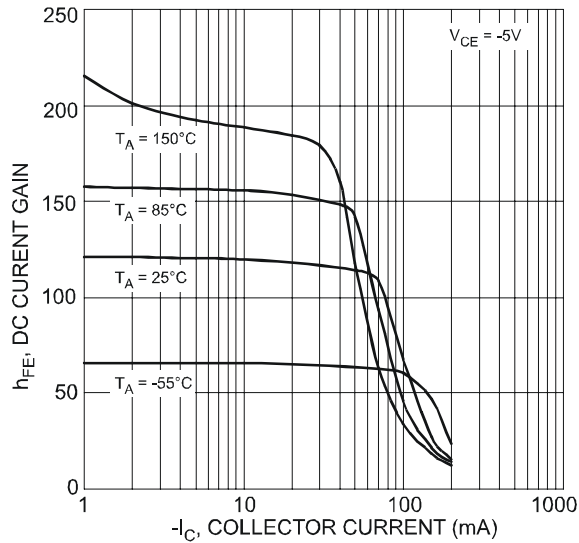


Fig. 3, Typical DC Current Gain vs. Collector Current

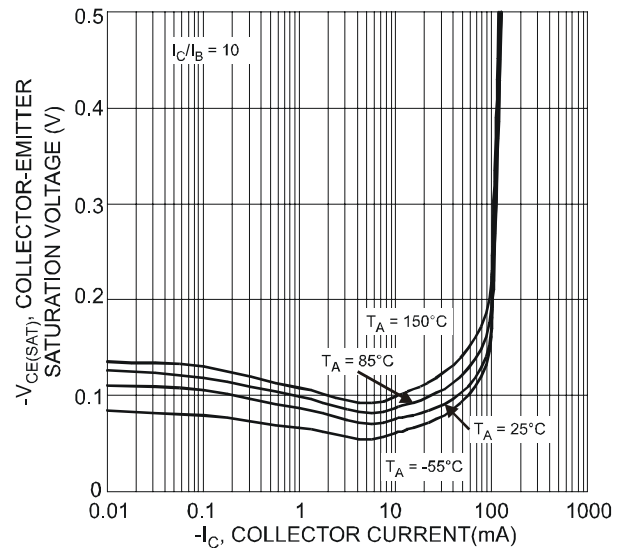


Fig. 4, Typical Collector-Emitter Saturation Voltage vs. Collector Current

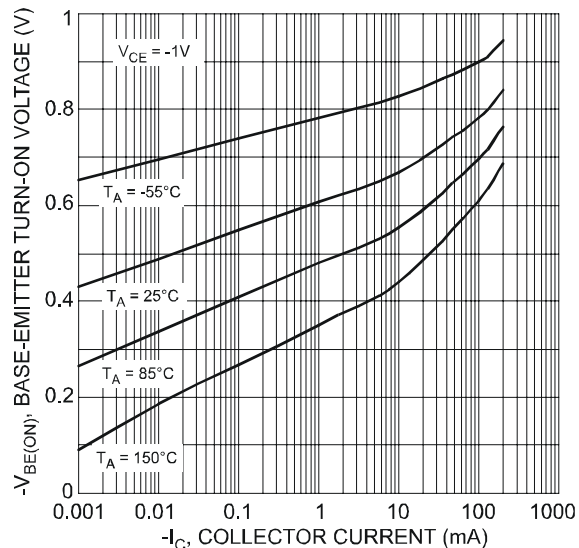


Fig. 5, Typical Base-Emitter Turn-On Voltage vs. Collector Current

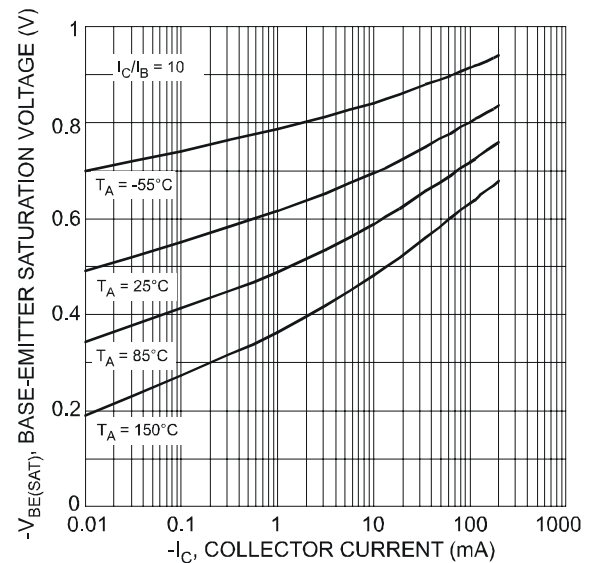


Fig. 6, Typical Base-Emitter Saturation Voltage vs. Collector Current

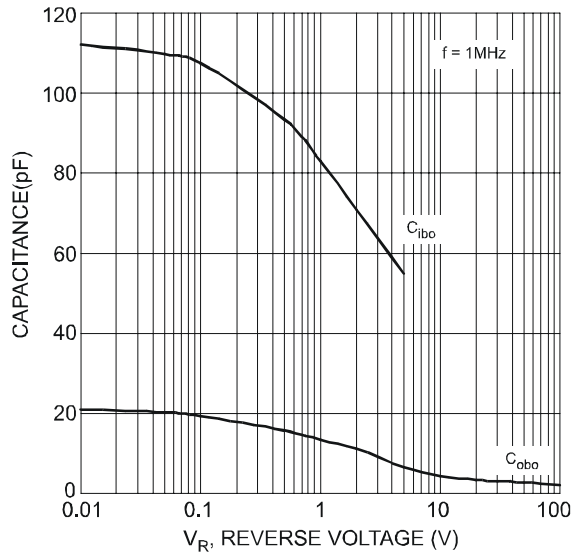


Fig. 7, Typical Capacitance Characteristics

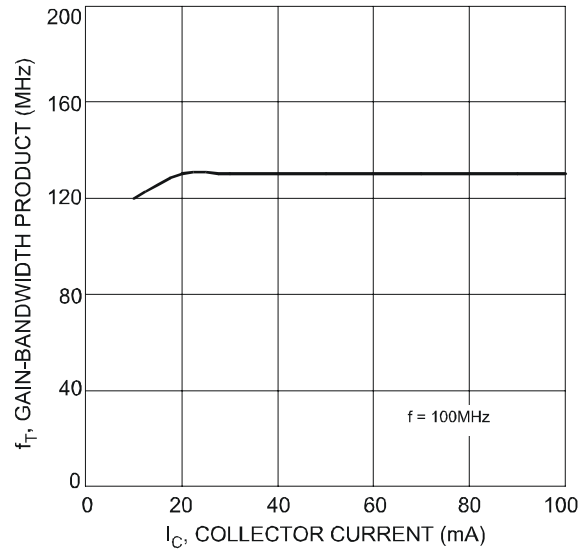


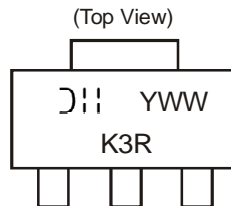
Fig. 8, Typical Gain-Bandwidth Product vs. Collector Current

## Ordering Information (Note 5)

| Device    | Packaging | Shipping         |
|-----------|-----------|------------------|
| DXTA92-13 | SOT89-3L  | 2500/Tape & Reel |

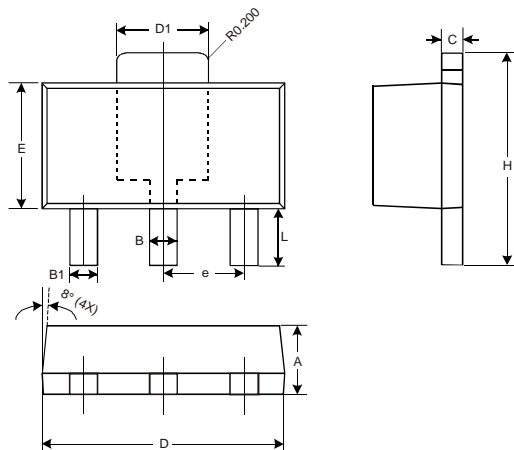
Notes: 5. For packaging details, go to our website at <http://www.diodes.com/ap02007.pdf>.

## Marking Information



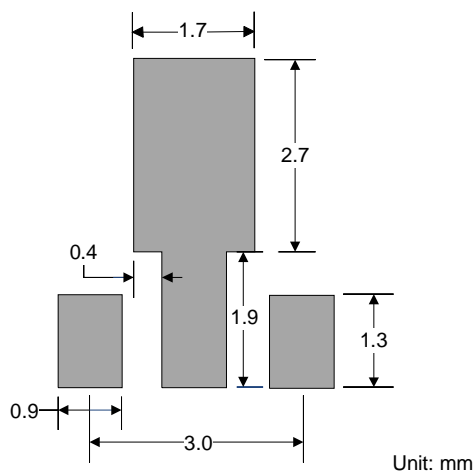
DII = Manufacturer's Code Marking  
K3R = Product Type Marking Code  
YWW = Date Code Marking  
Y = Last digit of year ex: 7 = 2007  
WW = Week code 01 - 52

## Package Outline Dimensions



| SOT89-3L             |      |      |      |
|----------------------|------|------|------|
| Dim                  | Min  | Max  | Typ  |
| A                    | 1.40 | 1.60 | 1.50 |
| B                    | 0.45 | 0.55 | 0.50 |
| B1                   | 0.37 | 0.47 | 0.42 |
| C                    | 0.35 | 0.43 | 0.38 |
| D                    | 4.40 | 4.60 | 4.50 |
| D1                   | 1.50 | 1.70 | 1.60 |
| E                    | 2.40 | 2.60 | 2.50 |
| e                    | —    | —    | 1.50 |
| H                    | 3.95 | 4.25 | 4.10 |
| L                    | 0.90 | 1.20 | 1.05 |
| All Dimensions in mm |      |      |      |

## Suggested Pad Layout



### IMPORTANT NOTICE

Diodes Incorporated and its subsidiaries reserve the right to make modifications, enhancements, improvements, corrections or other changes without further notice to any product herein. Diodes Incorporated does not assume any liability arising out of the application or use of any product described herein; neither does it convey any license under its patent rights, nor the rights of others. The user of products in such applications shall assume all risks of such use and will agree to hold Diodes Incorporated and all the companies whose products are represented on our website, harmless against all damages.

### LIFE SUPPORT

Diodes Incorporated products are not authorized for use as critical components in life support devices or systems without the expressed written approval of the President of Diodes Incorporated.