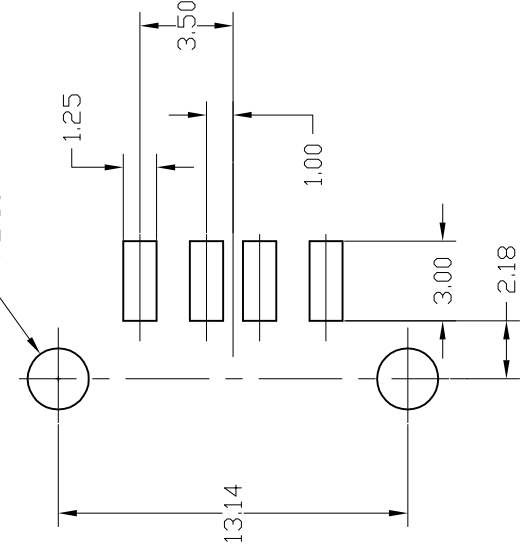


LOC		DIST		REVISIONS		
ES		00		P	LTR	DATE
				SEE SHEET 1		



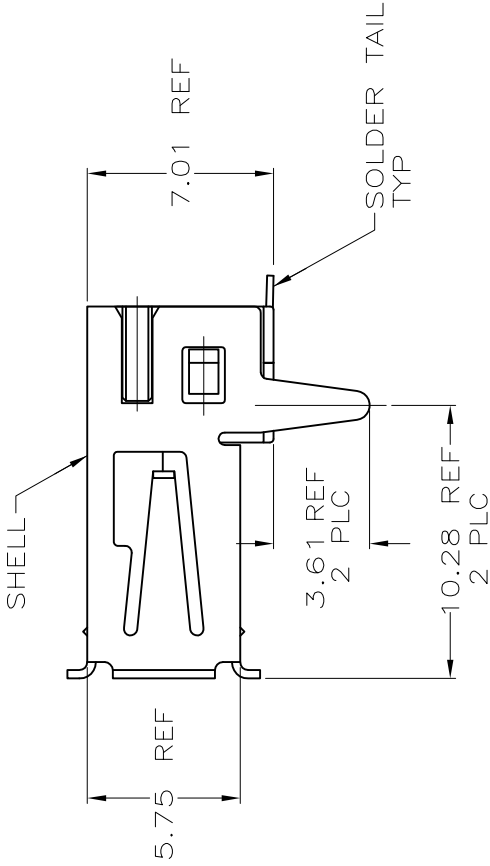
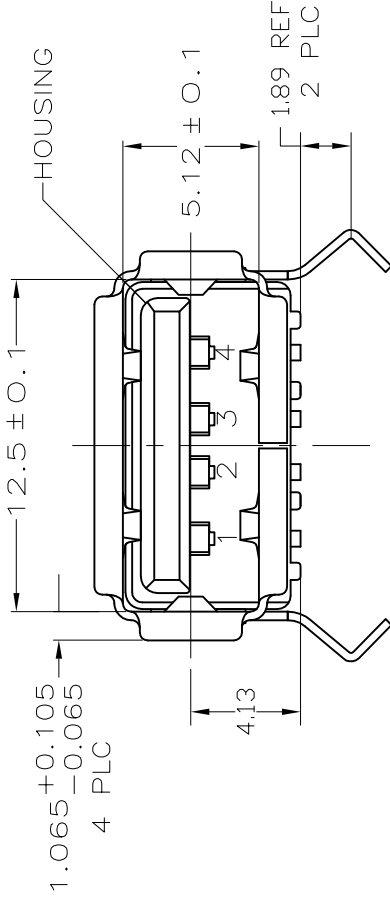
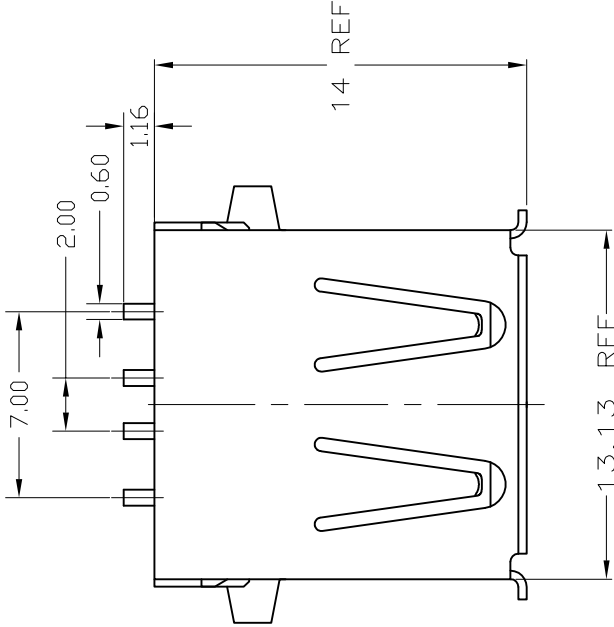
MATERIAL:
① SHELL— STAINLESS STEEL
CONTACTS— COPPER ALLOY.
HOUSING: UL 94V-0 RATED, THERMOPLASTIC, COLOR SEE TABLE.

PLATING:
CONTACTS: 0.076 μm MINIMUM GOLD OVER 0.76 μm MINIMUM PALLADIUM-NICKEL ON MATING AREA.
3.8 μm MINIMUM MATTE TIN ON SOLDER TAILS.
BOTH OVER 1.27 μm MINIMUM NICKEL.
CONTACT ALTERNATE PLATING: 0.76 μm MIN GOLD ON MATING AREA, 3.80 μm MIN MATTE TIN ON SOLDER TAILS, BOTH OVER 1.27 μm MIN NICKEL.
SHELL: 2~5 μm MINIMUM BRIGHT TIN

③ RECOMMENDED PC BOARD THICKNESS OF 1.42.



RECOMMENDED PC BOARD MOUNTING LAYOUT
(TOLERANCE=±0.05)



292303

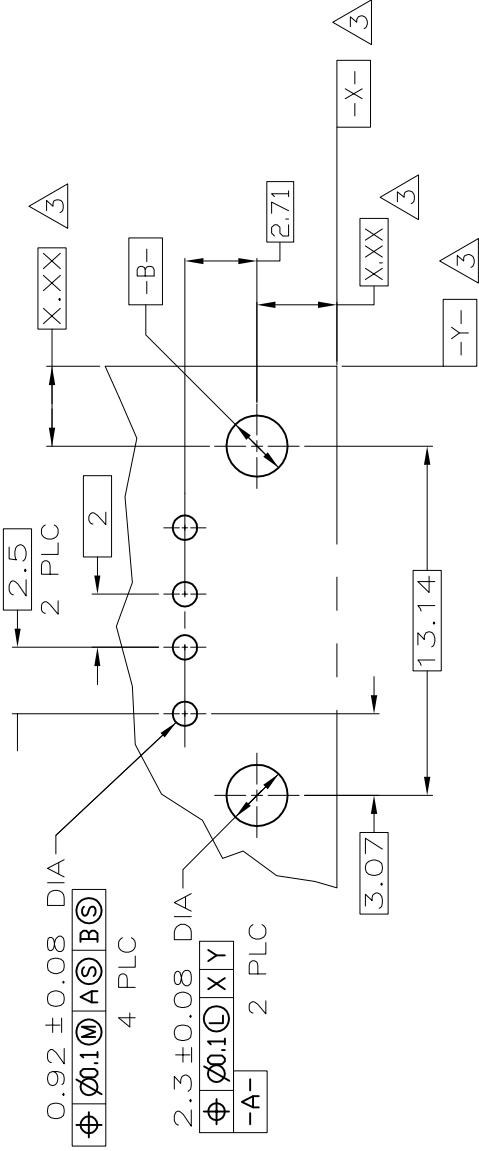
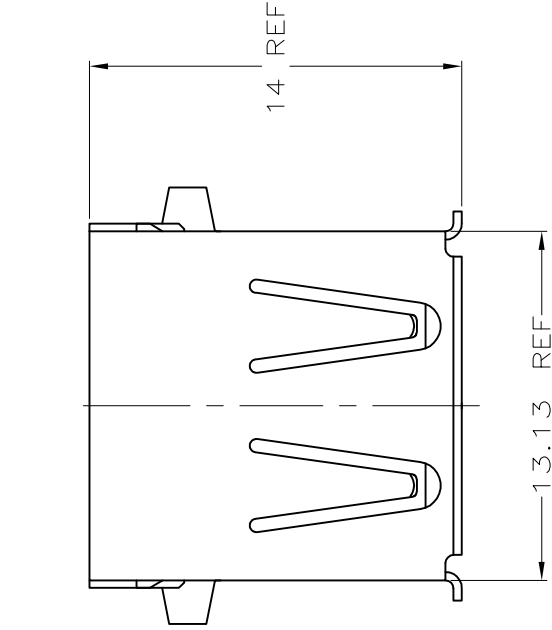
B

YES	OBSOLETE	BLACK	3-292303-1 ①E10
YES		BLACK	1-292303-1
YES		NATURAL	292303-7
HIGH TEMPERATURE COMPATIBLE		HOUSING COLOR	PART NUMBER

THIS DRAWING IS A CONTROLLED DOCUMENT.		STE TE Connectivity	
DIMENSIONS: mm	TOLERANCES, UNLESS OTHERWISE SPECIFIED:	19FEB04	NAME
0 PLC ±	1 PLC ±	19FEB04	RECEPTACLE ASSEMBLY RIGHT
2 PLC ± 0.25	3 PLC ±	19FEB04	ANGLE, 4 POSITION, T/H & SMT
4 PLC ±	FINISH ±	19FEB04	USB, LEAD FREE VERSION
MATERIAL ①	FINISH ②	19FEB04	RESTRICTED TO
		19FEB04	SIZE
		19FEB04	CAGE CODE
		19FEB04	DRAWING NO
		19FEB04	WEIGHT
		19FEB04	SCALE
		19FEB04	SHEET
		19FEB04	REV
		19FEB04	2 OF 4
		19FEB04	E14
		19FEB04	1471-9 (3/11)

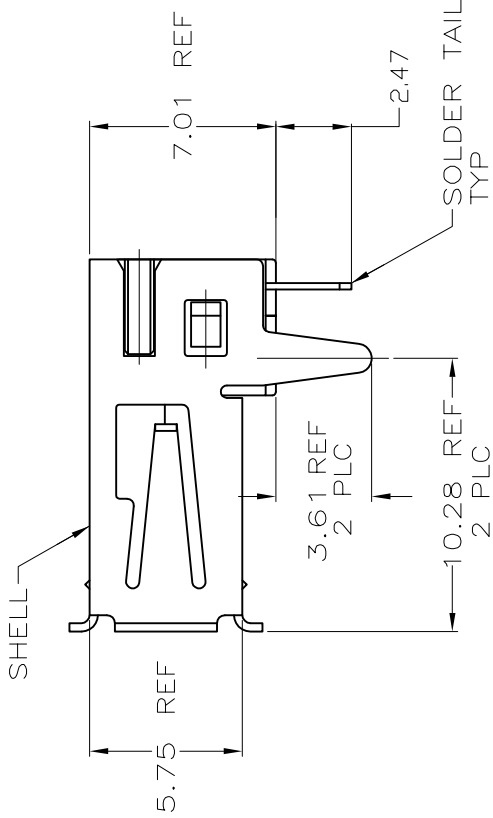
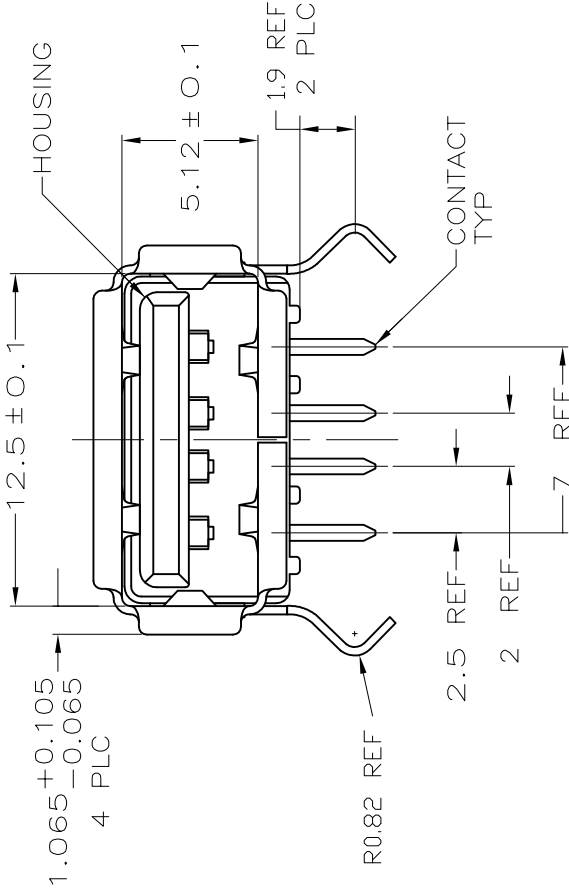
LOC	DIST	REVISIONS		
ES	00	P	LTR	DATE
		-	SEE SHEET 1	-
		-	-	-
		-	-	-

D



PC BOARD MOUNTING DIMENSIONS

C



B

MATERIAL:
 SHELL- STAINLESS STEEL.
CONTACTS- COPPER ALLOY.

HOUSING: UL 94V-0 RATED, THERMOPLASTIC, COLOR SEE TABLE.

PLATING:

CONTACTS: 0.076 μ m MINIMUM GOLD OVER 0.76 μ m MINIMUM PALLADIUM-NICKEL ON MATING AREA.
3.8 μ m MINIMUM MATTE TIN ON SOLDER TAILS.
BOTH OVER 1.27 μ m MINIMUM NICKEL.
CONTACT ALTERNATE PLATING: 0.76 μ m MIN GOLD ON MATING AREA, 3.80 μ m MIN MATTE TIN ON SOLDER TAILS, BOTH OVER 1.27 μ m MIN NICKEL.
SHELL: 2~5 μ m MINIMUM BRIGHT TIN

DATUM AND BASIC DIMENSIONS ESTABLISHED BY CUSTOMER.

RECOMMENDED PC BOARD THICKNESS OF 1.2.

292303

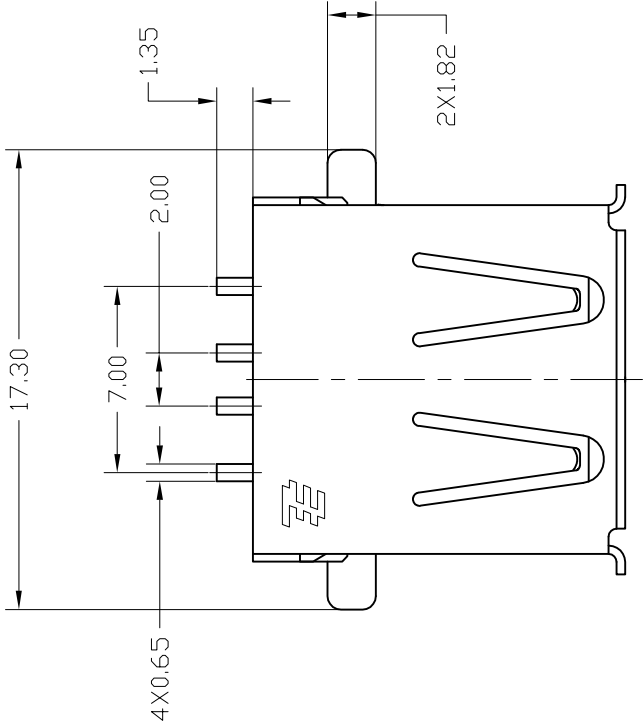
B

A

THIS DRAWING IS A CONTROLLED DOCUMENT.		DWN J.JIANG	19FEB04	NO	NATURAL	292303-8
		CHK S.YAO	19FEB04	HIGH TEMPERATURE COMPATIBLE	HOUSING COLOR	PART NUMBER
DIMENSIONS: mm	TOLERANCES, UNLESS OTHERWISE SPECIFIED:		NAME	TE Connectivity		
	0 PLC	±	APVD T.SASAKI	RECEPTACLE ASSEMBLY RIGHT		
	1 PLC	±	PRODUCT SPEC	ANGLE, 4 POSITION, T/H & SMT		
	2 PLC	± 0.25	108-60034	USB, LEAD FREE VERSION		
	3 PLC	±	APPLICATION SPEC	RESTRICTED TO		
	4 PLC	±	—	SIZE		
MATERIAL	FINISH	—	WEIGHT	A2	DRAWING NO	00779
		CUSTOMER DRAWING		SCALE 5:1		
				SHEET 3 OF 4		
				REV E-14		

LOC		DIST	REVISIONS		
ES		00	P	LTR	DATE
			-	-	SEE SHEET 1
			-	-	-
			-	-	-

D



C

△ MATERIAL:

⑪ SHELL- STAINLESS STEEL.
CONTACTS- COPPER ALLOY.

HOUSING: UL 94V-0 RATED, THERMOPLASTIC, COLOR SEE TABLE.

△ PLATING:

CONTACTS: 0.076 μm MINIMUM GOLD OVER 0.76 μm MINIMUM
PALLADIUM-NICKEL ON MATING AREA.

3.8 μm MINIMUM MATTE TIN ON SOLDER TAILS.

BOTH OVER 1.27 μm MINIMUM NICKEL.

CONTACT ALTERNATE PLATING: 0.76 μm MIN GOLD ON MATING

AREA, 3.80 μm MIN MATTE TIN ON SOLDER TAILS, BOTH

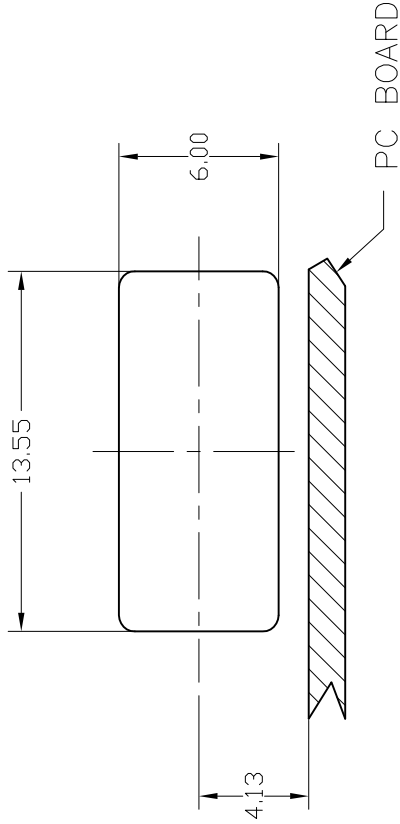
OVER 1.27 μm MIN NICKEL.

SHELL: 2~5 μm MINIMUM BRIGHT TIN

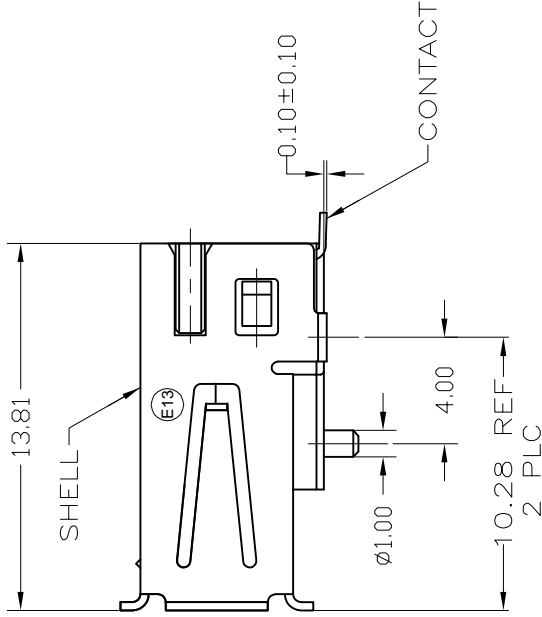
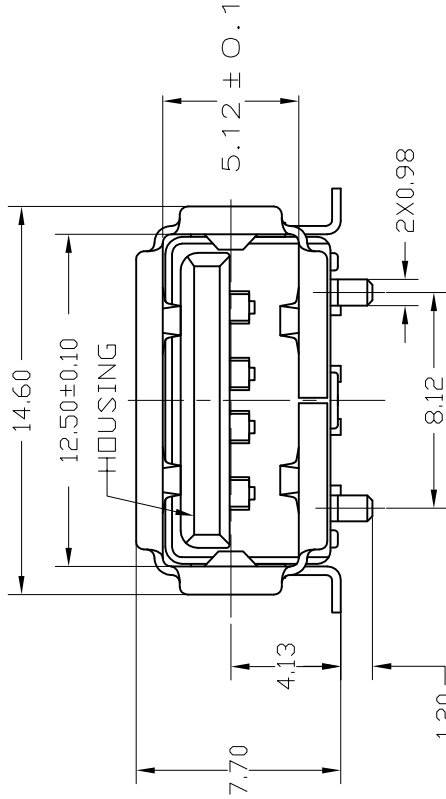
△ PANEL IS NEEDED FOR CUSTOMER.

△ THIS P/N IS PRELIMINARY.

RECOMMENDED MOUNTING PANEL CUTOUT



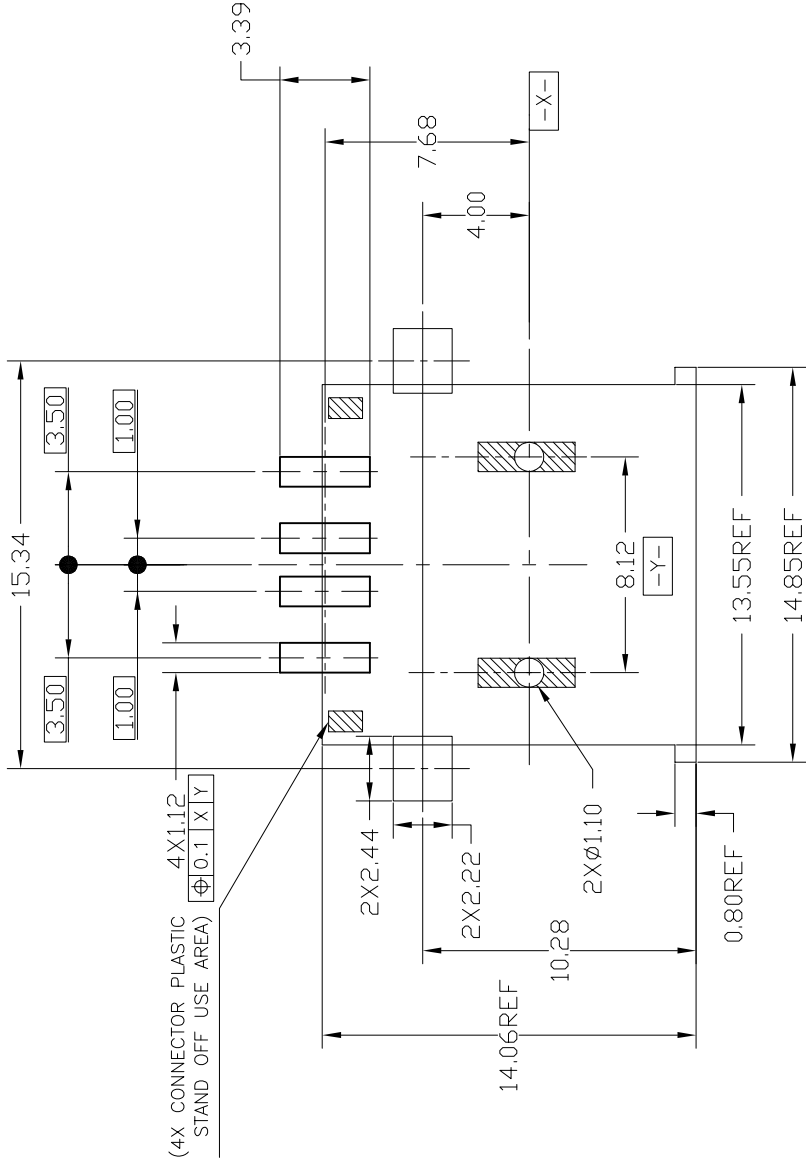
B



B

292303

C



RECOMMENDED PC BOARD MOUNTING LAYOUT (TOLERANCE=±0.05)

A

THIS DRAWING IS A CONTROLLED DOCUMENT.				DWN		19FEB04	TE Connectivity			
DIMENSIONS: mm				CHK		J.JIANG	19FEB04	NAME		
				S.YAO		19FEB04				
				APVD		19FEB04				
				PRODUCT SPEC						
				T.SASAKI			RECEPTACLE ASSEMBLY RIGHT			
				108-60034			ANGLE, 4 POSITION, T/H & SMT			
				APPLICATION SPEC			USB, LEAD FREE VERSION			
				—			SIZE	CAGE CODE	DRAWING NO	RESTRICTED TO
				—			A2	00779	C=292303	—
MATERIAL				WEIGHT		—				
				FINISH						
				TOLERANCES, UNLESS OTHERWISE SPECIFIED:						
				0 PLC		±				
				1 PLC		±				
				2 PLC		±				
				3 PLC		±				
				4 PLC		±				
				ANGLES		±				
				FINISH						
				CUSTOMER DRAWING		SCALE		SHEET		REV
						5:1		4 OF 4		E14

YES	BLACK	1-292303-6	△
YES	NATURAL	292303-9	
HIGH TEMPERATURE COMPATIBLE	HOUSING COLOR	PART NUMBER	