

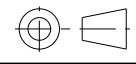


(18.2)
PROTECTIVE CAP WIDTH

(16.5)

NOTE 12

NOTE 13

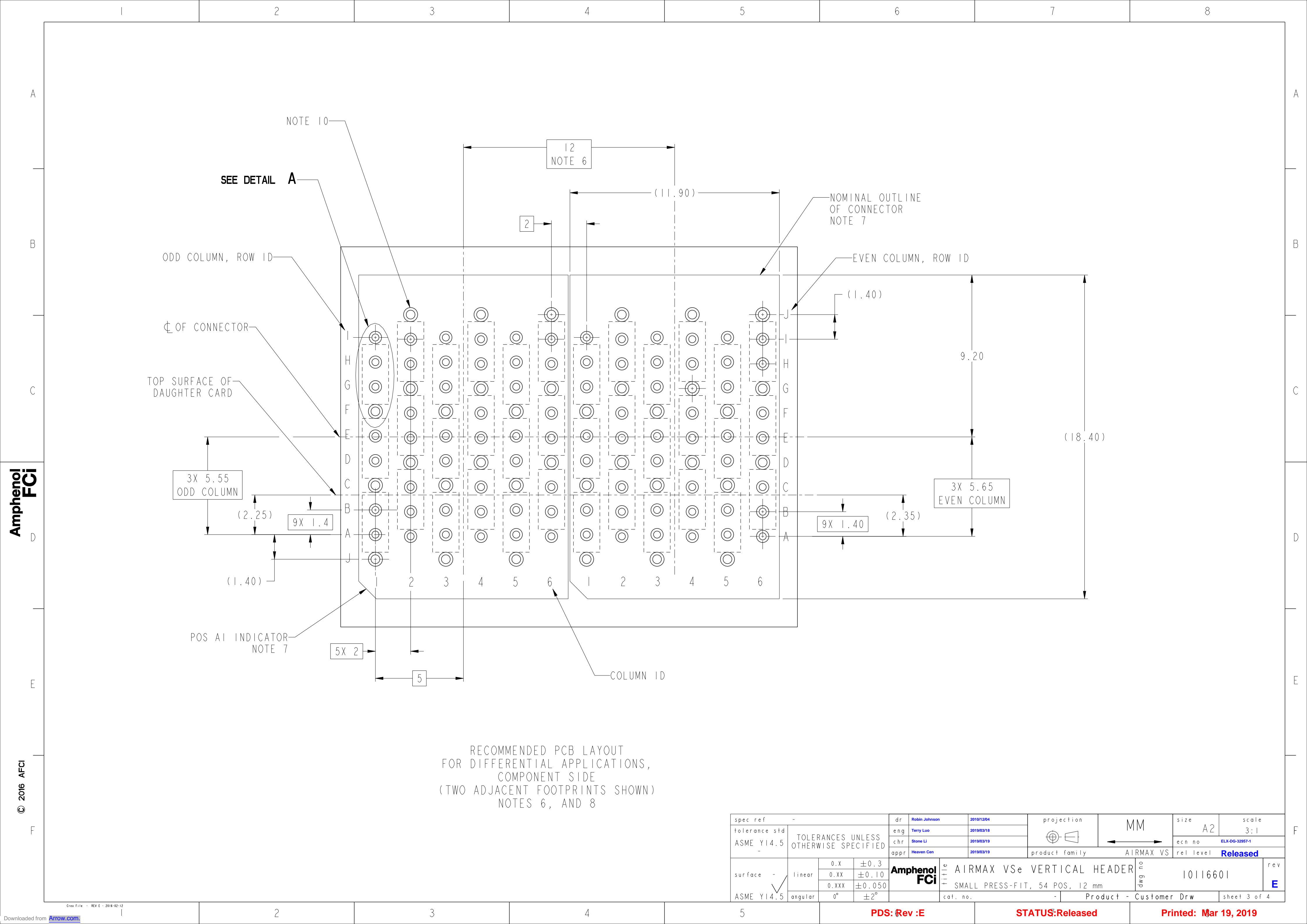
VIEWS SHOWN WITH
PROTECTIVE COVER INSTALLED

spec ref -				dr Robin Johnson		2010/12/04		<div>projection</div> <div></div>	<div>MM</div> <div></div>		size A2		scale 5:1	
tolerance std ASME Y14.5				eng Terry Luo		2019/03/18			ecn no ELX-DG-32957-1					
				chr Stone Li		2019/03/19								
				appr Heaven Cen		2019/03/19			product family AIRMAX VS		rel level Released			
<div>surface -</div> <div></div> <div>ASME Y14.5</div>		linear		0.X ±0.3		<div>Amphenol FCI</div>		title AIRMAX VSe VERTICAL HEADER		dwg no 10116601		rev E		
		0.XX ±0.10												
		0.XXX ±0.050												
angular		0° ±2°		cat. no. -		Product - Customer Drw		sheet 2 of 4						

PDS: Rev :E

STATUS:Released

Printed: Mar 19, 2019

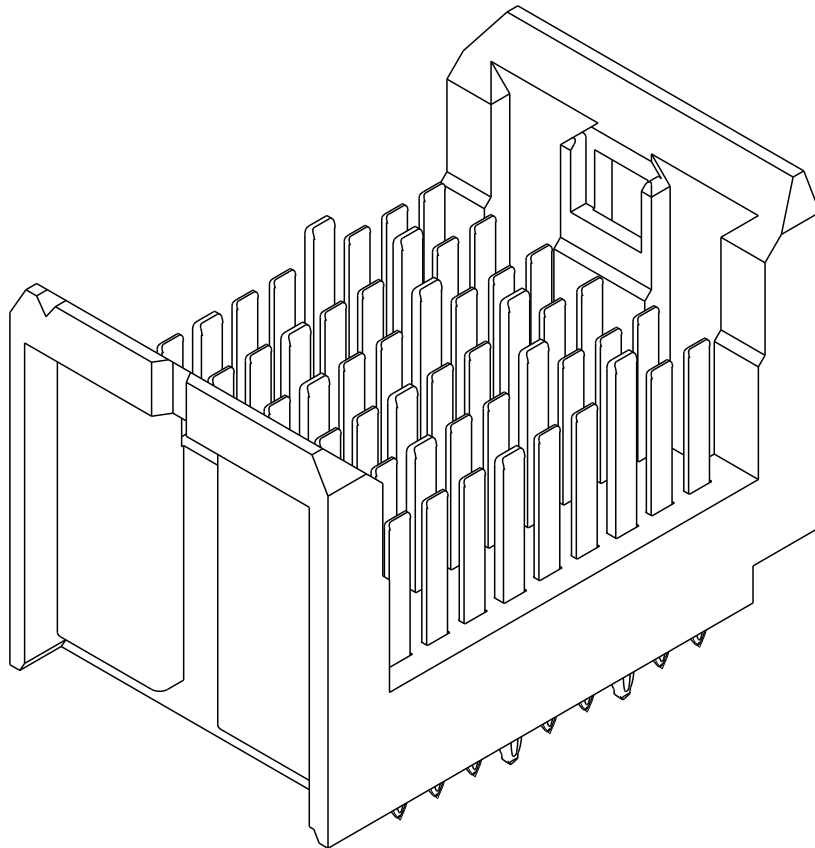


Amphenol
FCi

© 2016 APCI

RECOMMENDED PCB LAYOUT
FOR DIFFERENTIAL APPLICATIONS,
COMPONENT SIDE
(TWO ADJACENT FOOTPRINTS SHOWN)
NOTES 6, AND 8

spec ref -		dr Robin Johnson		2010/12/04		<div>projection</div> <div></div> <div>MM</div>	size A2	scale 3:1
tolerance std	TOLERANCES UNLESS OTHERWISE SPECIFIED	eng Terry Luo		2019/03/18			ecn no ELX-DG-32957-1	rel level Released
ASME Y14.5		chr Stone Li		2019/03/19				
-		appr Heaven Cen		2019/03/19			product family AIRMAX VS	
surface - 	linear	Amphenol FCI		title AIRMAX VSe VERTICAL HEADER SMALL PRESS-FIT, 54 POS, 12 mm		dwg no 10116601	rev E	
								0.X ±0.3
								0.XX ±0.10
ASME Y14.5	angular	0.XXX ±0.050						
		0° ±2°						
		cat. no.		-		Product - Customer Drw		sheet 3 of 4

1		2		3		4		5		6		7		8	
PART NUMBER		PRESS-FIT TAIL PLATING TYPE		PROTECTIVE COVER		LONG GROUND PIN LOCATIONS (5.6MM)		REMARKS		<div><p>10116601-101LF</p></div>					
10116601-101LF		TIN OVER NICKEL (LEAD FREE)		YES		F1, F3, F5, G2, G4, G6		WITHOUT DETECTION PIN							
10116601-111LF		TIN OVER NICKEL (LEAD FREE)		YES		F1, F3, F5, G2, G4, G6		WITH SHORT DETECTION PIN LOCATS AT A6							

NOTES:

1. CONNECTOR MATERIALS:
HOUSING: HIGH TEMP THERMOPLASTIC, BLACK, UL94V-0
CONTACT: COPPER ALLOY

2. CONTACT PLATING:
SEPARABLE INTERFACE: PERFORMANCE-BASED PLATING, QUALIFIED TO MEET THE REQUIREMENTS OF FCI PRODUCT SPECIFICATION GS-12-XXX INCLUDING TELCORDIA GR-1217-CORE (NOVEMBER 1995) CENTRAL OFFICE TEST SEQUENCE PRESS-FIT TAILS: SEE TABLE

3. PRODUCT SPECIFICATION: GS-12-XXX.

4. APPLICATION SPECIFICATION: GS-20-XXX.

5. PRODUCT MARKING, (PROTOTYPE, PART NUMBER & LOT CODE), ON THIS SURFACE.

6. THE MINIMUM CENTERLINE SPACING BETWEEN ADJACENT MODULES IS 12.0 mm.

7. CONNECTOR OUTLINE WITH HOUSING POS AI INDICATOR MAY BE SCREEN PRINTED ONTO CUSTOMER PCB TO BE USED AS A GUIDE FOR MANUAL CONNECTOR PLACEMENT.

8. REFER TO CUSTOMER DRAWING 10104444 FOR INFORMATION ON PCB HOLE DIAMETERS AND PLATING OPTIONS.

9. LEAD FREE PRODUCT MEETS EUROPEAN UNION DIRECTIVES AND OTHER COUNTRY REGULATIONS AS DESCRIBED IN GS-22-008.


10. THE OUTER VIAS IN COLUMN J ARE OPTIONAL. IF ADDED THESE HOLES PROVIDE GROUND SYMETRY THROUGH THE PCB. NO CONNECTOR EONS WILL BE PRESSED INTO THESE HOLES.

11. PACKAGING MEETS GS-14-920 LEAD FREE LABELING SPECIFICATION.

12. FOR REMOVAL OF THE PROTECTIVE CAP BY HAND, GRIP USING THESE SURFACES.

13. FOR REMOVAL OF THE PROTECTIVE CAP WITH PLIERS, GRIP USING THIS FEATURE.

14. GROUND VIAS IN POSITIONS C, F, & J FOR ODD COLUMNS AND POSITIONS D, G, & J FOR EVEN COLUMNS REQUIRE (Ø0.50) FINISHED HOLES. ALL OTHER VIAS REQUIRE (Ø0.40) FINISHED HOLES.

15.  SYMBOL WILL BE NEXT TO ANY DIMENSION, VIEW, OR NOTE THAT HAS BEEN MODIFIED WITH THE CURRENT DRAWING REVISION.

16. SHORT DETECTION PIN LOCATES AT A6 IS 0.5mm LESS WIPE NOMINAL THAN THE SHORTEST PIN.

42X (Ø0.400)

⊕

Ø0.1

SIGNAL

NOTE 8 & 14

1.50

1.4

3.40

1.8X (Ø0.500)

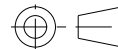
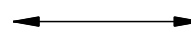

⊕

Ø0.1

GROUND

NOTE 8 & 14

DETAIL SCALE A 16:1

spec ref -				dr Robin Johnson 2010/12/04		projection 	MM 	size A2	scale 5:1		
tolerance std ASME Y14.5				eng Terry Luo 2019/03/18				ecn no ELX-DG-32957-1			
TOLERANCES UNLESS OTHERWISE SPECIFIED				chr Stone Li 2019/03/19				rel level Released			
appr Heaven Cen 2019/03/19				product family AIRMAX VS							
surface -		✓	linear	0.X ±0.3	<div></div> AIRMAX VSe VERTICAL HEADER				dwg no 10116601		rev E
			0.XX ±0.10								
			0.XXX ±0.050								
ASME Y14.5		angular	0° ±2°	cat. no. -		Product - Customer Drw				sheet 4 of 4	

PDS: Rev :E

STATUS:Released

Printed: Mar 19, 2019