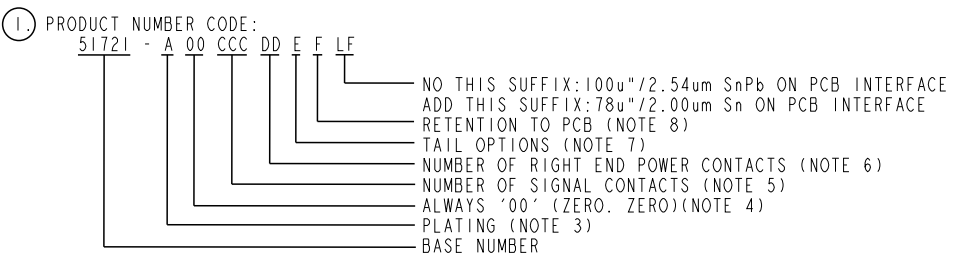




Copyright FCI.

PRODUCT NUMBER	DIM	LENGTH FORMULAS (SEE NOTE 10)
51721-A00CCDDEF--	DIM "A"	2.54 x (CCC/4) + 6.35 x DD + 16.51(NOTE 10)
SEE NOTE 1	DIM "B"	2.54 x (CCC/4) + 6.35 x DD + 8.89
	DIM "C"	2.54 x (CCC/4) + 6.35 x DD + 7.62
	DIM "E"	2.54 x (CCC/4) + 11.43
	DIM "F"	2.54 x (CCC/4) + 6.35 x DD + 17.27
	DIM "H"	2.54 x (CCC/4) + 6.35

CONNECTOR NOTES



- HOUSING MATERIAL: GLASS FILLED V-O HIGH TEMP THERMO PLASTIC.  
SIGNAL CONTACT MATERIAL: COPPER ALLOY  
POWER CONTACT MATERIAL: COPPER ALLOY
- PLATING OPTION:  
I = SEE PRINT 10064183 FOR PLATING SPEC OF 51721-100CCDDEF; 51721-100CCDDEFLF
- THIS PART IS NOT AVAILABLE WITH LEFT SIDE POWER CONTACTS.
- SIGNAL CONTACTS, 004 TO 148 AVAILABLE.
- RIGHT END POWER CONTACTS, 01 TO 20 AVAILABLE.  
MAXIMUM OF 20 POWER CONTACTS PER CONNECTOR.
- TAIL OPTIONS:  
A = 3.43 SOLDER TO BOARD  
B = 4.19 SOLDER TO BOARD  
C = 3.43 PRESS FIT  
D = 2.34 SOLDER TO BOARD

- RETENTION TO PCB OPTIONS:  
A = BOARD LOCK (REQUIRES 2.49 +0.05, -0.03 THRU HOLE IN PCB).  
MOUNTING FOOT THICKNESS 5.59  
B = 3.81 THRU HOLE (REQUIRES 4.01±0.07 THRU HOLE IN PCB).  
MOUNTING FOOT THICKNESS 4.06  
MOUNTING HOLES, WHERE APPLICABLE, ARE UNPLATED.
- MANUFACTURE'S NAME, P/N, AND DATE CODE  
TO APPEAR ON THIS SURFACE.
- THE MAXIMUM OVERALL LENGTH (DIM A) OF A PART  
IS 203.2
- PRODUCT SPECIFICATION GS-12-149  
APPLICATION SPECIFICATION BUS-20-067
- REFERENCE 51697 FOR SELECT LOAD/FMLB WORKSHEET

PCB NOTES:

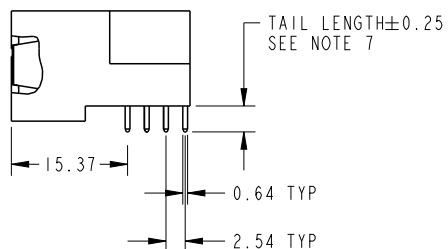
- ALL DIMENSIONS ARE BASIC UNLESS OTHERWISE SPECIFIED.
- ALL THROUGH HOLES ARE LOCATED WITH A  
TRUE POSITION OF 0.10
- ALL HOLE DIAMETERS ARE FINISHED HOLE SIZE.
- Ø1.151±0.025 DRILLED HOLES PLATED WITH  
0.008 MIN SnPb OR Sn OVER 0.03 TO 0.08  
Cu PLATING TO ACHIEVE A 1.02±0.07 HOLE.
- A ΔSYMBOL WILL BE NEXT TO ANY DIMENSION, VIEW, OR  
NOTE WHICH HAS BEEN MODIFIED WITH THE CURRENT  
DRAWING REVISION.
- CONNECTOR KEEP OUT ZONE

dr	Julia Wang	2006/09/20	<div>projection</div> <div></div>	<div>MM</div> <div></div>	size	A4	scale	1:1
eng	Ruan MT	2015/09/30			ecn no	ELX-DG-21593-1		
chr	Fancy Zhang	2015/09/30			rel level	Released		
appr	Pei-Ming Zheng	2015/09/30	product family		PwrBlade			
<div></div>		title			R/A HEADER WITH GUIDE PIN			rev
		SIGNAL / POWER			51721			P
www.fci.com		cat. no.	51721	Product - Customer Drw			sheet 2 of 3	

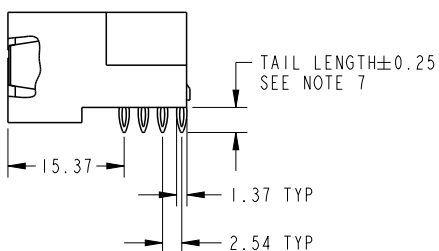
PRODUCT NUMBER

51721-A00CCDDEF\_..

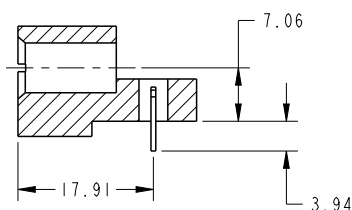
SEE NOTE 1



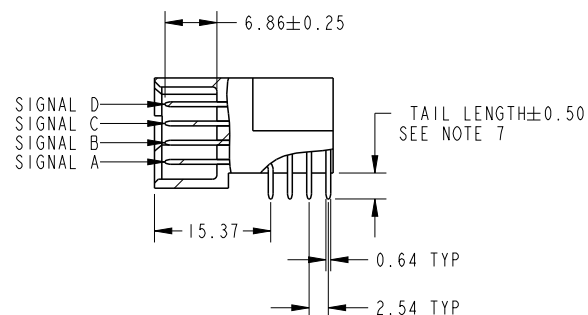
△ BROKEN-OUT SECTION B-B  
FOR SOLDER TO BOARD ONLY



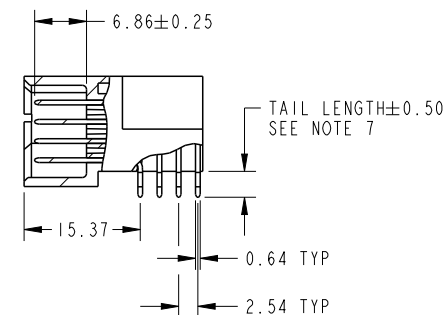
△ BROKEN-OUT SECTION B-B  
FOR POWER PRESS FIT ONLY



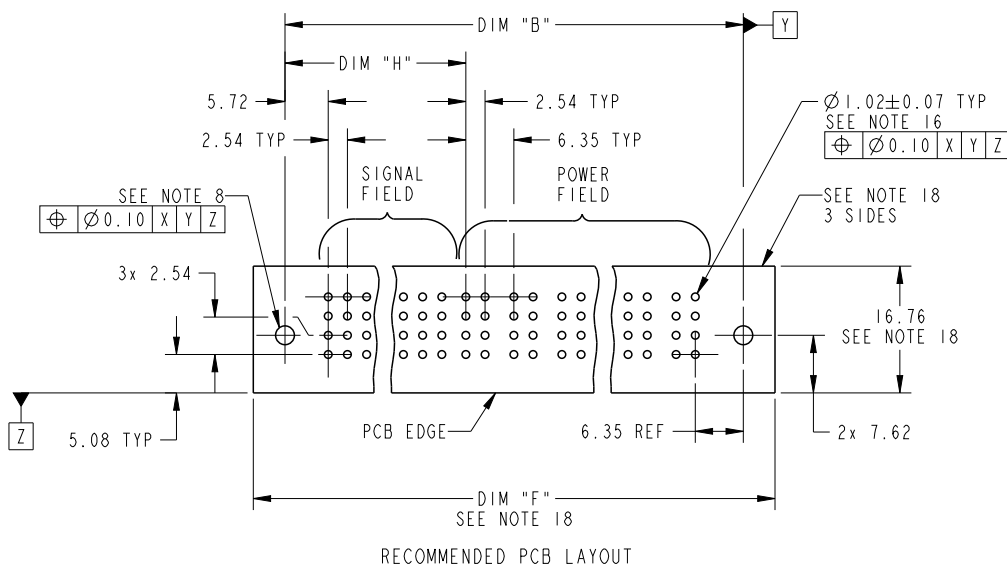
SECTION A-A



△ BROKEN-OUT SECTION C-C  
FOR SOLDER TO BOARD ONLY



△ BROKEN-OUT SECTION C-C  
FOR PRESS FIT ONLY



RECOMMENDED PCB LAYOUT

dr	Julia Wang	2006/09/20	projection	MM	size	A4	scale	1:1
eng	Ruan MT	2015/09/30			ecn no	ELX-DG-21593-1		
chr	Fancy Zhang	2015/09/30			rel level	Released		
appr	Pei-Ming Zheng	2015/09/30	product family	PwrBlade				
	title	R/A HEADER WITH GUIDE PIN			dwg no	51721		rev
		SIGNAL / POWER						P
www.fci.com	cat. no.	51721	Product - Customer Drw			sheet 3 of 3		