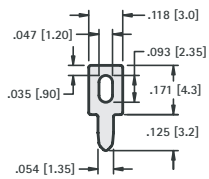
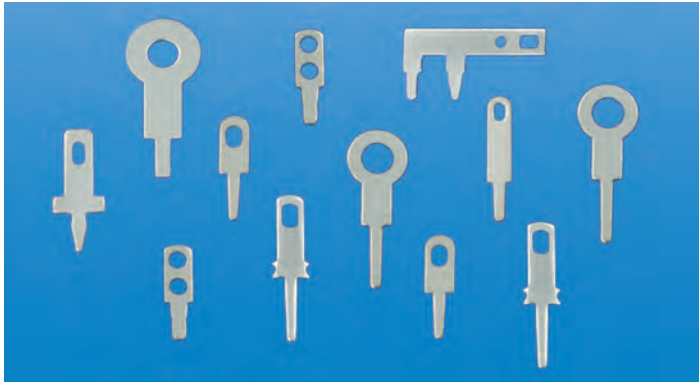
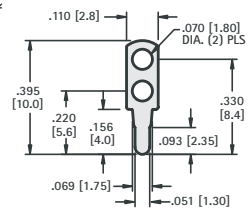
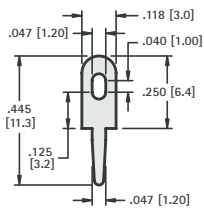
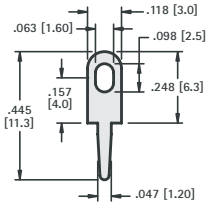
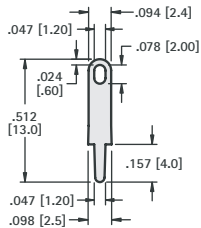
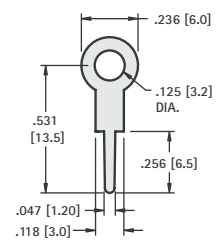
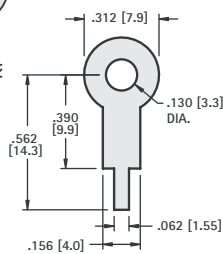
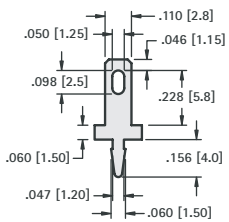
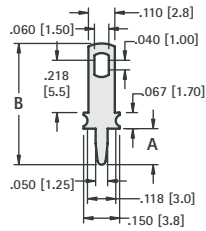
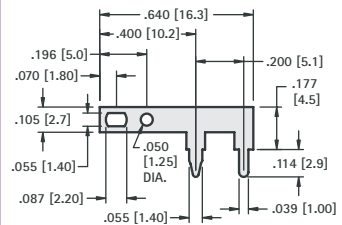
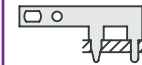


PC TEST POINTS - LOOP TYPES


CAT. NO. 1033
MATERIAL:
 .025 (.64) thick Brass,
 Tin Plate

CAT. NO. 1038
MATERIAL:
 .020 (.51) thick Brass,
 Tin Plate

CAT. NO. 1249
MATERIAL:
 .025 (.64) thick Brass,
 Tin Plate

CAT. NO. 4952
MATERIAL:
 .025 (.64) thick Brass,
 Tin Plate

CAT. NO. 4953
MATERIAL:
 .020 (.51) thick Brass,
 Tin Plate

CAT. NO. 4954
MATERIAL:
 .020 (.51) thick Brass,
 Tin Plate

CAT. NO. 680
MATERIAL:
 .015 (.38) thick Brass,
 Tin Plate

CAT. NO. 1250
MATERIAL:
 .020 (.51) thick Brass,
 Tin Plate

MATERIAL: .032 (.81) thick Brass, Tin Plate

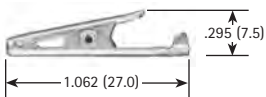
CAT. NO.	A	B
1041	.275 (7.0)	.630 (16.0)
1046	.150 (3.8)	.503 (12.8)


CAT. NO. 1045
MATERIAL:
 .025 (.64) thick Brass,
 Tin Plate

ALLIGATOR CLIPS

SMALL CLIP

- Solder Connection with Strain Relief
- Insulated or Non-Insulated



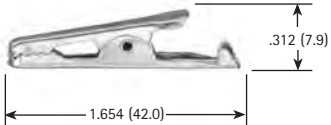
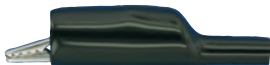
CAT. NO.	INSULATOR COLOR
5033	NONE
5034	RED
5035	BLACK
5036	GREEN
5037	YELLOW

JAW SPREAD
 .236 (6.0) max.

MATERIAL:
 Clip: Steel, Nickel Plate
 Insulator: Vinyl

MEDIUM CLIP

- Solder Connection with Strain Relief
- Insulated or Non-Insulated



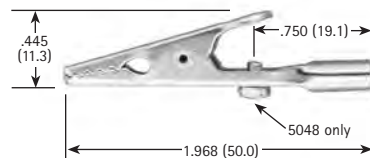
CAT. NO.	INSULATOR COLOR
5038	NONE
5039	RED
5040	BLACK

JAW SPREAD
 .236 (6.0) max.

MATERIAL:
 Clip: Steel, Nickel Plate
 Insulator: Vinyl

LARGE CLIP

- Solder Connection or Screw Connection (Barrel Accepts Wire or Standard Banana Plugs)
- Insulated or Non-Insulated



CAT. NO.	INSULATOR COLOR
5044	NONE
5045	RED
5046	BLACK
5048	SCREW INSTALLED

JAW SPREAD
 .315 (8.0) max.

MATERIAL:
 Clip: Steel, Nickel Plate
 Insulator: Vinyl

 Tel (718) 956-8900 • Fax (718) 956-9040
 (800) 221-5510 • kec@keyelco.com

KEYSTONE
 RoHS COMPLIANT ~ ISO 9001 CERTIFIED

 www.keyelco.com
 31-07 20th Road - Astoria, NY 11105-2017