

Description: On-ground BLE/NFC combo**Series:** Embedded Antenna**PART NUMBER:** W5100**ELECTRICAL SPECIFICATIONS**

Frequency P1	2400-2483.5 MHz
Frequency P2	13.56 MHz
P1 nominal Impedance	50Ω
P1 VSWR	<3:1
P1 Gain in free space	-1dBi
P1 Gain over metal plate	1dBi
P2 Inductance in free space	0.95μH
P2 Q-value in free space	44
P2 Self Resonant Frequency in free space	65.9MHz
P2 Inductance over metal plate	0.92μH
P2 Q-value over metal plate	33
P2 Self Resonant Frequency over metal plate	63.9MHz
Connector type	Contact pads

Issue: 1613

In the effort to improve our products, we reserve the right to make changes judged to be necessary.

CONFIDENTIAL AND PROPRIETARY INFORMATION

This document contains confidential and proprietary information of Pulse Electronics, Inc. (Pulse) and is protected by copyright, trade secret and other state and federal laws. Its receipt or possession does not convey any rights to reproduce, disclose its contents, or to manufacture, use or sell anything it may describe. Reproduction, disclosure or use without specific written authorization of Pulse is strictly forbidden.

Description: On-ground BLE/NFC combo**Series:** Embedded Antenna**PART NUMBER:** W5100**MECHANICAL SPECIFICATIONS**

Color	Black
Weight	4.6 g
Fixing system	Pressure sensitive adhesive

ENVIRONMENTAL SPECIFICATIONS

Operating temperature	-40 to 85°C
Storage temperature	MIL STD 810G: 24h at 85°C and 24h at -40°C
Temperature shock	MIL STD 810G: Method 503.5, -40 for 1 hr to +85 C for 1 hr @ 15 deg.C/min rate of change; 3 cycles
Humidity	MIL STD 810G: 24h at 60°C and 95%RH
Drop test	Top, bottom, side. 3 times/orientation, 40"

Issue: 1613

In the effort to improve our products, we reserve the right to make changes judged to be necessary.

CONFIDENTIAL AND PROPRIETARY INFORMATION

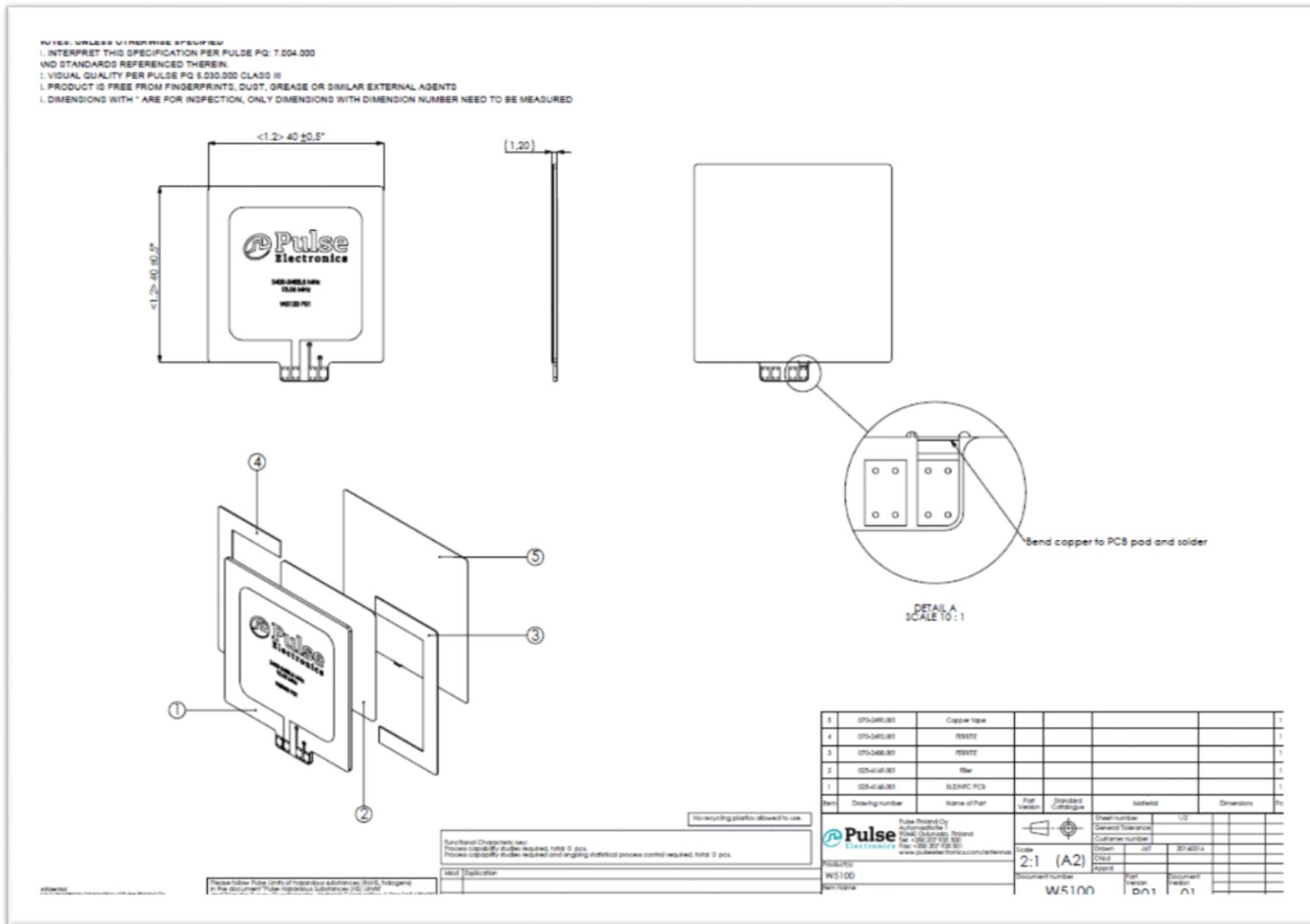
This document contains confidential and proprietary information of Pulse Electronics, Inc. (Pulse) and is protected by copyright, trade secret and other state and federal laws. Its receipt or possession does not convey any rights to reproduce, disclose its contents, or to manufacture, use or sell anything it may describe. Reproduction, disclosure or use without specific written authorization of Pulse is strictly forbidden.

Description: On-ground BLE/NFC combo

Series: Embedded Antenna

PART NUMBER: W5100

MECHANICAL DRAWING



Issue: 1613

In the effort to improve our products, we reserve the right to make changes judged to be necessary.

CONFIDENTIAL AND PROPRIETARY INFORMATION

This document contains confidential and proprietary information of Pulse Electronics, Inc. (Pulse) and is protected by copyright, trade secret and other state and federal laws. Its receipt or possession does not convey any rights to reproduce, disclose its contents, or to manufacture, use or sell anything it may describe. Reproduction, disclosure or use without specific written authorization of Pulse is strictly forbidden.

Description: On-ground BLE/NFC combo

Series: Embedded Antenna

PART NUMBER: W5100

OTHER SPECIFICATIONS

Test setup over metal (80x80mm²). Material Ni plated steel
Antenna contact points shown for BLE(P1) and NFC (P2)



Issue: 1613

In the effort to improve our products, we reserve the right to make changes judged to be necessary.

CONFIDENTIAL AND PROPRIETARY INFORMATION

This document contains confidential and proprietary information of Pulse Electronics, Inc. (Pulse) and is protected by copyright, trade secret and other state and federal laws. Its receipt or possession does not convey any rights to reproduce, disclose its contents, or to manufacture, use or sell anything it may describe. Reproduction, disclosure or use without specific written authorization of Pulse is strictly forbidden.

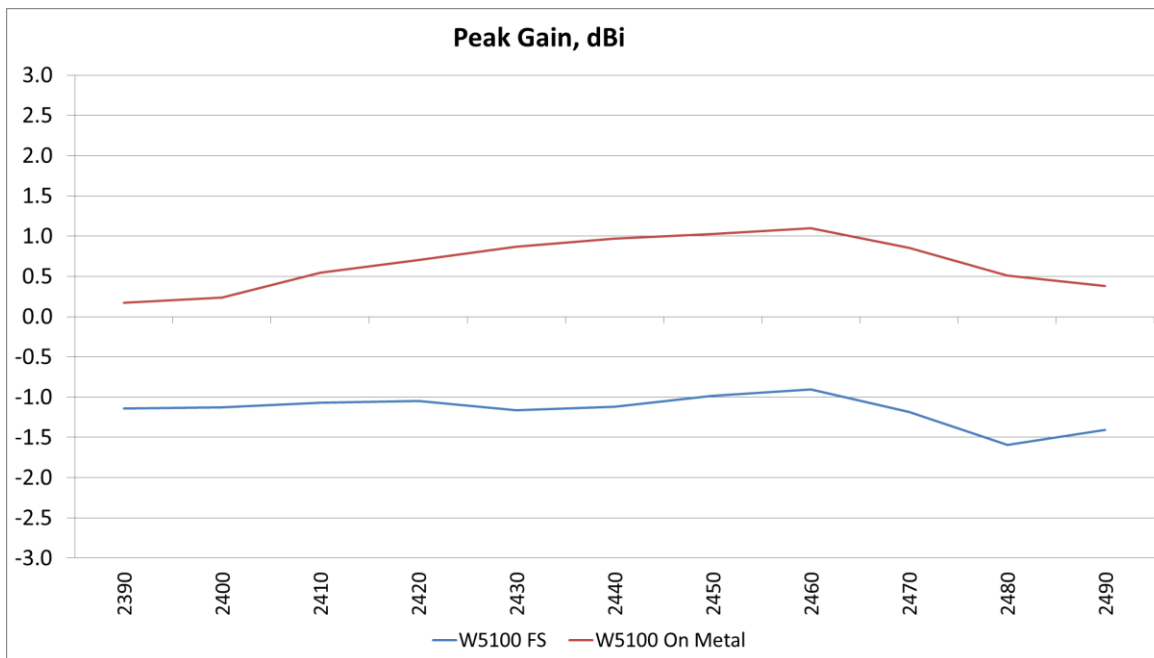
Description: On-ground BLE/NFC combo

Series: Embedded Antenna

PART NUMBER: W5100

CHARTS

P1



Issue: 1613

In the effort to improve our products, we reserve the right to make changes judged to be necessary.

CONFIDENTIAL AND PROPRIETARY INFORMATION

This document contains confidential and proprietary information of Pulse Electronics, Inc. (Pulse) and is protected by copyright, trade secret and other state and federal laws. Its receipt or possession does not convey any rights to reproduce, disclose its contents, or to manufacture, use or sell anything it may describe. Reproduction, disclosure or use without specific written authorization of Pulse is strictly forbidden.

Downloaded from Arrow.com

Description: On-ground BLE/NFC combo

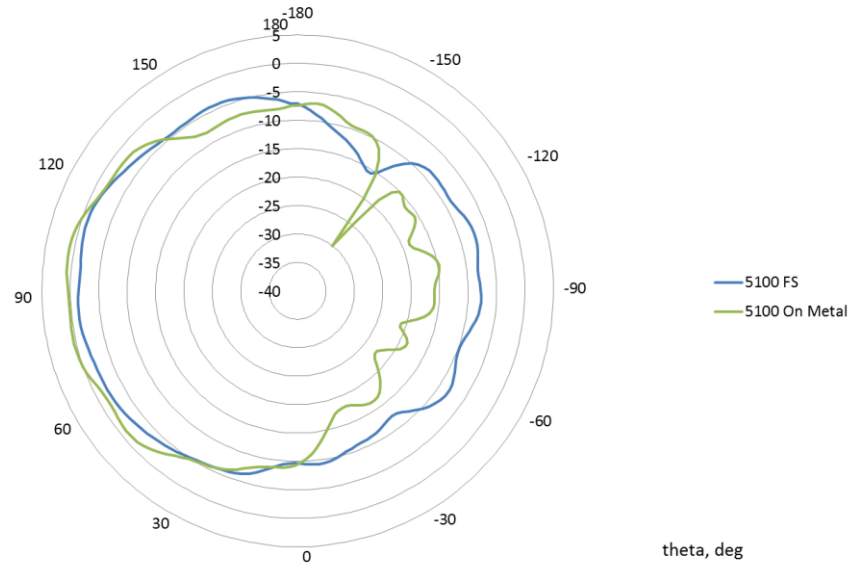
Series: Embedded Antenna

PART NUMBER: W5100

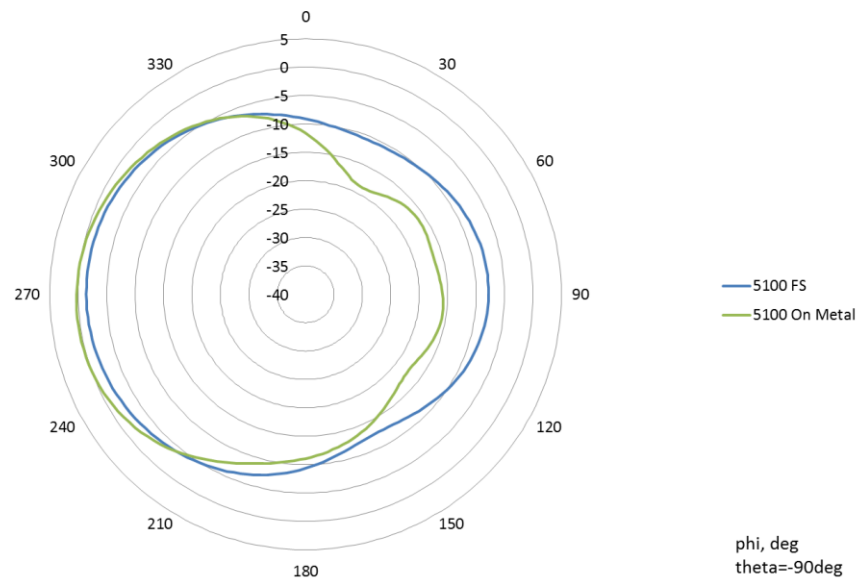
CHARTS

P1

Vertical plane



Horizontal plane



Issue: 1613

In the effort to improve our products, we reserve the right to make changes judged to be necessary.

CONFIDENTIAL AND PROPRIETARY INFORMATION

This document contains confidential and proprietary information of Pulse Electronics, Inc. (Pulse) and is protected by copyright, trade secret and other state and federal laws. Its receipt or possession does not convey any rights to reproduce, disclose its contents, or to manufacture, use or sell anything it may describe. Reproduction, disclosure or use without specific written authorization of Pulse is strictly forbidden.

Downloaded from Arrow.com

Description: On-ground BLE/NFC combo

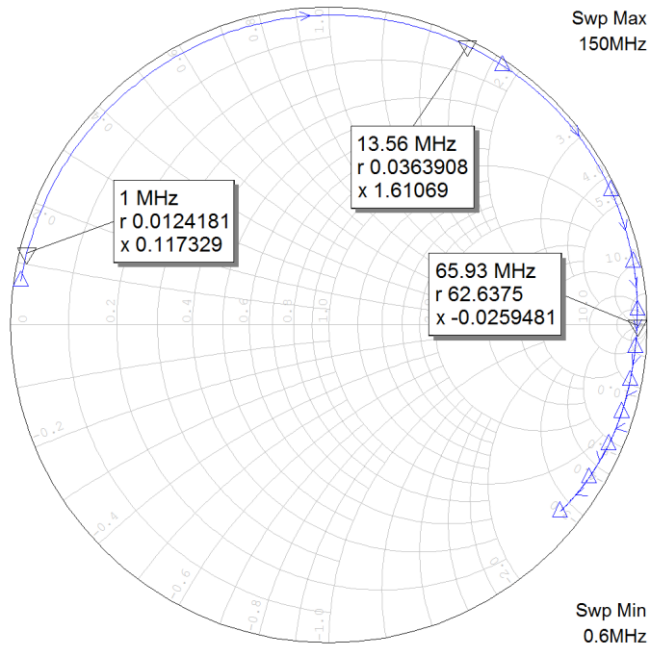
Series: Embedded Antenna

PART NUMBER: W5100

CHARTS

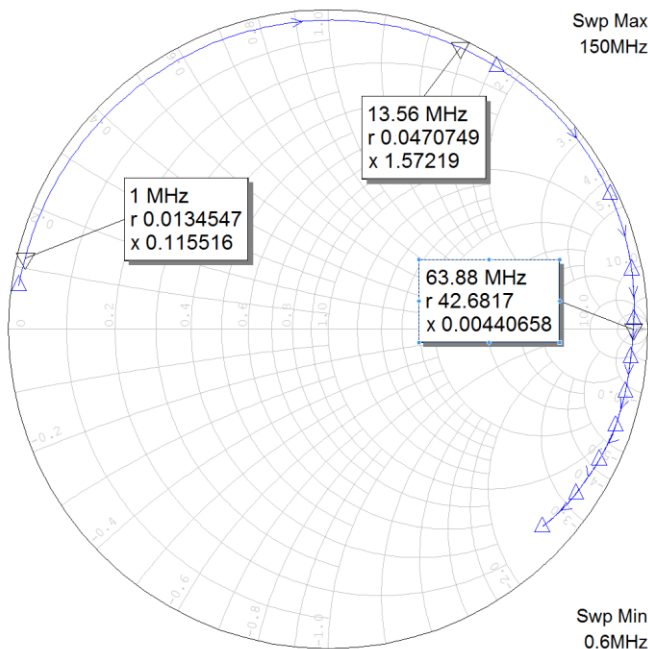
P2

Free Space



L @13.56MHz, μH	0.95
Q @13.56MHz	44
SRF, MHz	65.9

On Metal



L @13.56MHz, μH	0.92
Q @13.56MHz	33
SRF, MHz	63.9

Issue: 1613

In the effort to improve our products, we reserve the right to make changes judged to be necessary.

CONFIDENTIAL AND PROPRIETARY INFORMATION

This document contains confidential and proprietary information of Pulse Electronics, Inc. (Pulse) and is protected by copyright, trade secret and other state and federal laws. Its receipt or possession does not convey any rights to reproduce, disclose its contents, or to manufacture, use or sell anything it may describe. Reproduction, disclosure or use without specific written authorization of Pulse is strictly forbidden.

Description: On-ground BLE/NFC combo**Series:** Embedded Antenna**PART NUMBER:** W5100

PACKAGING

Sealed plastic bag 60x90mm

ASSEMBLY

Pull off adhesive cover from backside and attach. Apply pressure 10N/cm² for 4 seconds to activate pressure sensitive adhesive.

Issue: 1613

In the effort to improve our products, we reserve the right to make changes judged to be necessary.

CONFIDENTIAL AND PROPRIETARY INFORMATION

This document contains confidential and proprietary information of Pulse Electronics, Inc. (Pulse) and is protected by copyright, trade secret and other state and federal laws. Its receipt or possession does not convey any rights to reproduce, disclose its contents, or to manufacture, use or sell anything it may describe. Reproduction, disclosure or use without specific written authorization of Pulse is strictly forbidden.