

(5.00 mm) .1969" PITCH • 30 A DUAL BLADE/LEAF SYSTEMS

SERIES	POWER PINS	LEAD STYLE	TAIL LENGTH	PLATING OPTION	TAIL
MPT Terminal	-02, -03, -04,	-6.30 = (6.30 mm) 0.248" (MPT only)	-01 = Use with (1.60 mm) .062" Thick PCB	-L = 10 μ " (0.25 μ m) Gold on contact, Matte Tin on tail	(Required Callout)
MPS Socket	-06, -08	-7.70 = (7.70 mm) 0.303" (MPS only)	-03 = Use with (2.36 mm) .093" Thick PCB	-T = Matte Tin	-V = Vertical

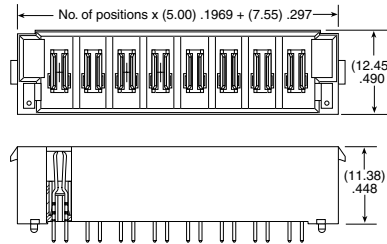
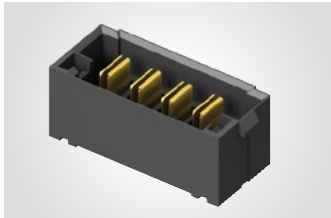
MPT

Board Mates:

MPS

Cable Mates:

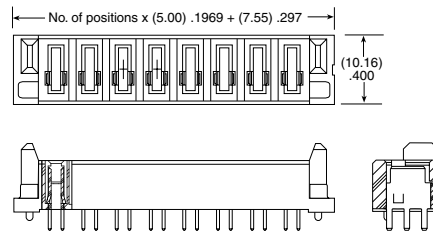
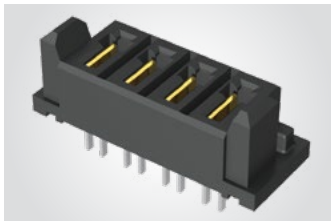
MPSS



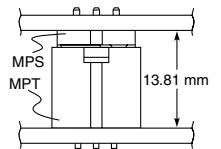
MPS

Board Mates:

MPT



MATED HEIGHT



View complete specifications at: samtec.com?MPT & samtec.com?MPS

SERIES	POWER PINS	01	TAIL LENGTH	PLATING OPTION	RA	SD
MPT Terminal	-02, -04, -06, -08	-01 = Use with (1.60 mm) .062" Thick PCB	-L = 10 μ " (0.25 μ m) Gold on contact, Matte Tin on tail			
MPS Socket		-03 = Use with (2.36 mm) .093" Thick PCB	-T = Matte Tin			

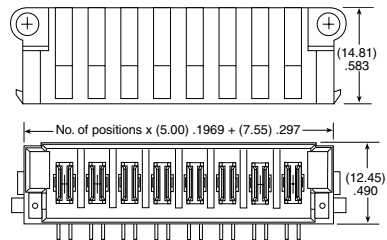
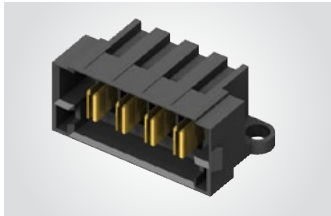
MPT-RA

Board Mates:

MPS

Cable Mates:

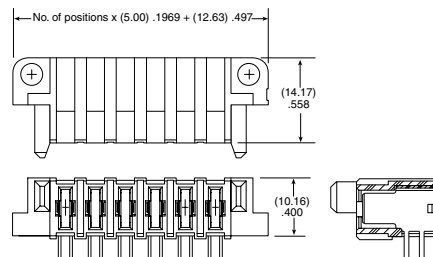
MPSS



MPS-RA

Board Mates:

MPT



Note:
Some lengths, styles and
options are non-standard,
non-returnable

View complete specifications at: samtec.com?MPT & samtec.com?MPS