

SMT LOW PROFILE LITHIUM & ALKALINE CELL HOLDERS

"1/2AA" • "AA" • "2/3A"

AVAILABLE ON TAPE AND REEL

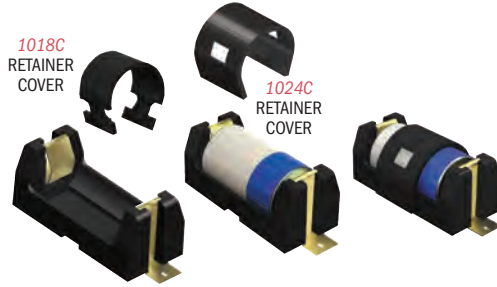
FEATURES

- Low profile surface mount holders for Cylindrical Lithium and Alkaline batteries
- UL 94V-0 Heat resistant Nylon Housings well suited for reflow soldering
- Designed for vacuum pick and place assembly
- Gold-plated Phosphor Bronze contacts assure low contact resistance and are readily solderable

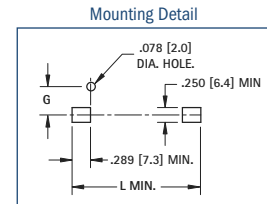
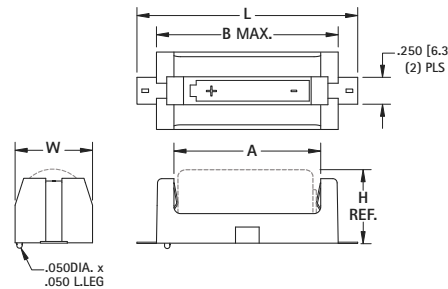
- Ideal for both lead free solder and traditional solder process
- Battery installation and removal does not require tools
- Securely holds battery in place
- Polarity clearly marked for orientation
- **Operating Temp Range:**
-60°F to +290°F (-50°C to +145°C)

APPLICATIONS

- Computer memory, power backup systems
- Telecommunications
- Residential, industrial and commercial security systems
- PLC and industrial controls



SMT ULTRA LOW PROFILE



SPECIFICATIONS

Base: High Temp Nylon 46, UL 94V-0

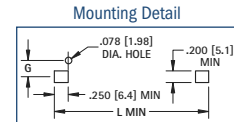
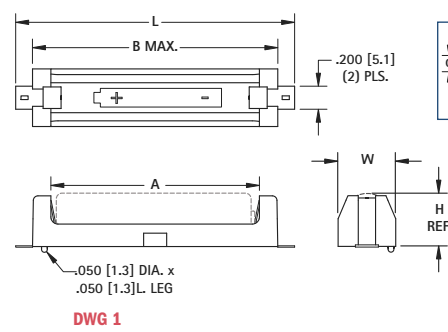
Contacts: .012 (.30) Phosphor Bronze, Gold Plate (Flash)

CAT. NO.	ON TAPE BULK	ON TAPE & REEL COVER	L	W	H (REF)	A	B (MAX)	G	CELL SIZE	TAPE & REEL SPECS PACKED ON 13" REEL	BATTERY CROSS REFERENCE
1016	1016TR	1024C	1.723 (43.8)	.612 (15.5)	.603 (15.3)	1.030 (26.2)	1.360 (34.5)	.265 (6.7)	"1/2 AA"	56mm wide, 24mm pitch, 125 pcs/reel	Energizer 544, Duracell PX28L, Kodak K28A & KS28, Panasonic CR14250, Saft LCP3, Maxell 4LR44, Sanyo CR14250SE
1024	1024TR	1024C	2.711 (68.9)	.612 (15.5)	.603 (15.3)	2.040 (51.8)	2.359 (59.9)	.265 (6.7)	"AA"	88mm wide, 28mm pitch, 100 pcs/reel	Energizer, Duracell, Panasonic, Sanyo, Varta, Rayovac, Tadiran
1018	1018TR	1018C	2.053 (52.2)	.720 (18.3)	.682 (17.3)	1.365 (34.7)	1.690 (42.9)	.319 (8.1)	"2/3 A"	72mm wide, 32mm pitch, 100 pcs/reel	Duracell DL2/3A, Kodak K123L, Panasonic CR123A, Saft 450SC & VR0450, Sanyo CR17335SE

SMT ULTRA LOW PROFILE



SINGLE



SPECIFICATIONS

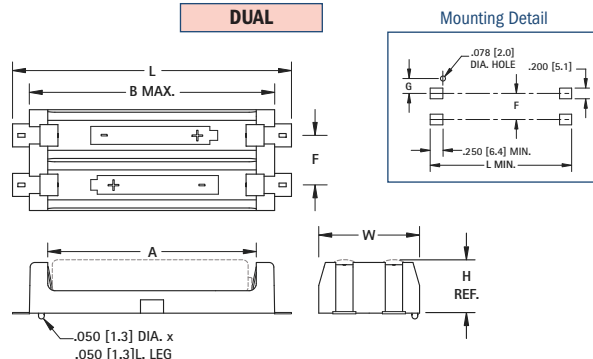
Base: High Temp Nylon 46, UL 94V-0

Contacts: .012 (.30) Phosphor Bronze, Gold Plate (Flash)

Operating Temp: -60°F to +290°F (-50°C to +145°C)

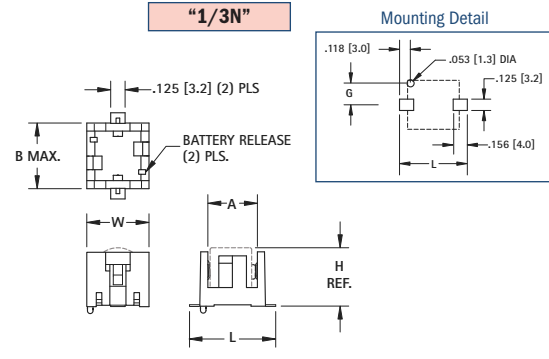
DWG 1

DUAL



DWG 2

"1/3N"



DWG 3

CAT. NO.	ON TAPE BULK	ON TAPE & REEL COVER	DWG NO.	L	W	H (REF)	A	B (MAX)	F	G	CELL SIZE	TAPE AND REEL SPECS PACKED ON 13" REEL	BATTERY CROSS REFERENCE
1020	1020TR	1020C	1	2.421 (61.5)	.500 (12.7)	.445 (11.3)	1.810 (46.0)	2.140 (54.4)	-	.209 (5.3)	"AAA"	88mm Wide, 24mm pitch, 200 pcs/reel	Energizer, Duracell, Panasonic, Sanyo, Varta, Rayovac, Tadiran
1022	1022TR	1022C	2	2.421 (61.5)	.875 (22.2)	.445 (11.3)	1.810 (46.0)	2.140 (54.4)	.430 (10.9)	.182 (4.6)	"AAA"	88mm Wide, 32mm pitch, 125 pcs/reel	Energizer, Duracell, Panasonic, Sanyo, Varta, Rayovac, Tadiran
1012	1012TR	1012C	2	2.711 (68.9)	1.180 (30.0)	.603 (15.3)	2.040 (51.8)	2.359 (59.9)	.568 (14.4)	.265 (6.7)	"AA"	88mm Wide, 48mm pitch, 100 pcs/reel	Energizer, Duracell, Panasonic, Sanyo, Varta, Rayovac, Tadiran
498	498TR	-	3	.748 (19.0)	.540 (13.7)	.506 (12.9)	.430 (10.9)	.570 (14.5)	-	.240 (6.1)	"1/3 N"	44mm Wide, 24mm pitch, 125 pcs/reel	Duracell DL1/3N, Sanyo K58L, Energizer CR1/3N

Tel (718) 956-8900 • Fax (718) 956-9040
(800) 221-5510 • kec@keyelco.com

KEYSTONE
RoHS COMPLIANT ~ ISO 9001 CERTIFIED

www.keyelco.com
31-07 20th Road - Astoria, NY 11105-2017

SMT BATTERY HOLDERS

SMT & THM POLARIZED LITHIUM CELL HOLDERS

“CR2” • “CR123A”

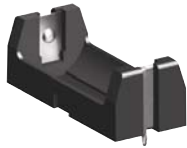
FEATURES

- Low profile surface mount and Thru Hole Mount Holders for Lithium batteries
- UL 94V-0 Heat resistant Nylon Housings well suited for reflow or wave soldering.

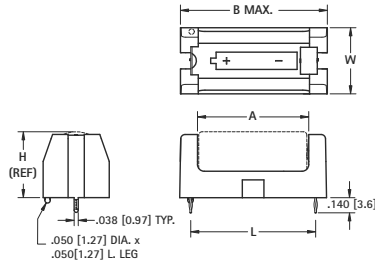
- Battery installation and removal does not require tools.
- Securely holds battery in place
- Polarized holder offers circuit protection against improper battery installation

APPLICATIONS

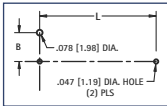
- Computer memory, power backup systems
- Telecommunications
- Residential, industrial security systems
- PLC and industrial controls



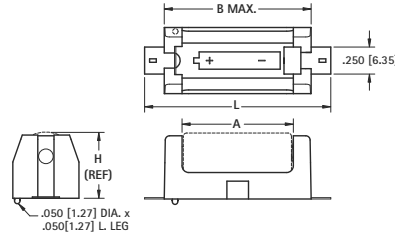
Thru-Hole Mount (THM)



Mounting Detail

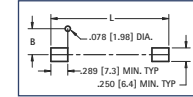


1018C
RETAINER
COVER
FITS ALL
HOLDERS



Surface Mount (SMT)

Mounting Detail



SPECIFICATIONS

Base: High Temp Nylon 46, UL Rated 94V-0

Contacts: .012 (1.30) Phosphor Bronze, Gold Plate (Flash) - SMT

.012 (1.30) Phosphor Bronze, Tin-Nickel Plate - THM

Operating temp range: -60°F to 290°F (-50°C to 145°C)

CAT. NO.	MOUNTING STYLE	L	W	H (Ref)	A	B (MAX)	G	CELL SIZE
1010	SMT	1.723 (43.8)	.612 (15.5)	.661 (16.8)	1.030 (26.2)	1.360 (34.5)	.265 (6.7)	CR2
1011	THM	1.156 (29.4)	.720 (18.3)	.712 (18.1)	1.365 (34.7)	1.690 (42.9)	.319 (8.1)	CR123A
1050	SMT	2.062 (52.4)						
1051	THM	1.487 (37.8)						

RUGGED STEEL & ALUMINUM LITHIUM CELL HOLDERS

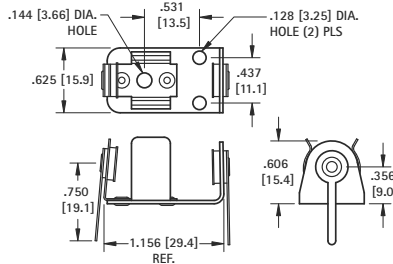
- Sturdily constructed of quality materials
- Contacts made from Brass, Nickel Plate
- Ideal for punishing applications

STEEL HOLDERS “1/2AA”



CAT. NO. 2103

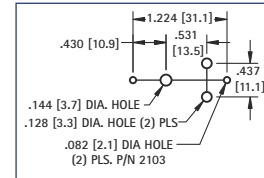
CAT. NO. 1103



BATTERY CROSS REFERENCE

Energizer: 544, Duracell: PX28L, Kodak: K28A & KS28, Panasonic: CR14250, Sanyo: CR14250SE, Saft: LCP3, Maxell: 4LR44

Mounting Detail

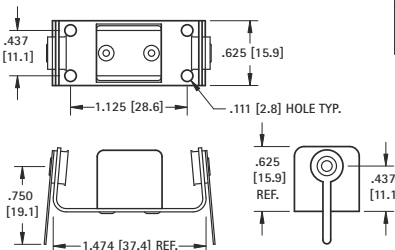


ALUMINUM HOLDERS “2/3A”



CAT. NO. 131

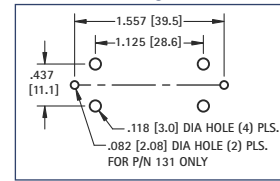
CAT. NO. 132



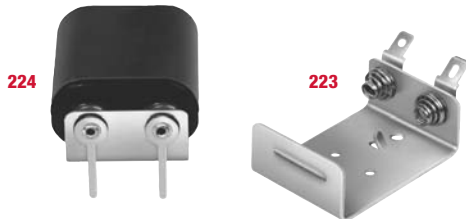
BATTERY CROSS REFERENCE

Duracell: DL2/3A, Kodak: K123L, Sanyo: CR173335SE, Saft: 450SC & VR0450

Mounting Detail



6 VOLT LITHIUM CELL HOLDERS

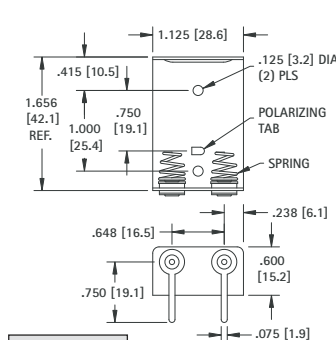


- Polarizing Tab for proper orientation
- Lightweight, ideal for rugged applications
- DL223A or Equivalent Batteries

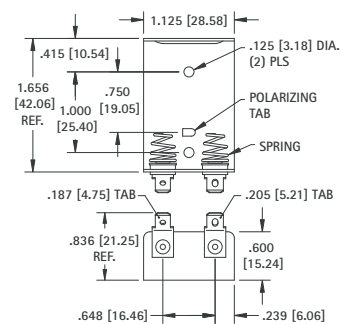
SPECIFICATIONS

Frame: Aluminum 2024-T3 Terminals: Brass, Tin Plate

Spring Contacts: .025 (.64) Dia. Spring Steel, Nickel Plate



CAT. NO. 224



CAT. NO. 223