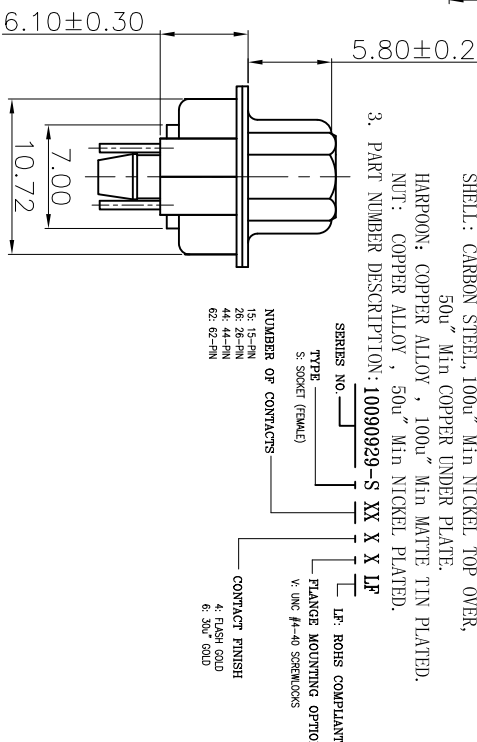


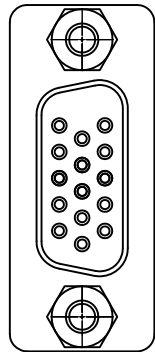
REMARK:-
1. CHARACTERISTICS:
RATED VOLTAGE: 250V
RATED CURRENT: 2.5AMP
CONTACT RESISTANCE: 25mohms MAX. INITIAL,
40mohms MAX. AFTER,
INSULATION RESISTANCE: 5000Mohms MIN. at 500V DC
DIELECTRIC STRENGTH: 750Vrms
OPERATING TEMPERATURE RANGE: -55° C~105° C
INSERTION/EXTRACTION FORCE PER CONTACT: 5N Max./0.2N Min.
MATING/UNMATING CYCLES: 200MATTINGS MIN FOR GOLD-FLASH
500MATTINGS MIN FOR 30u" GOLD.

2. MATERIAL:

INSULATORS: THERMOPLASTIC G.F (U194V-0) BLACK
CONTACTS: COPPER ALLOY, GOLD(G/F or 30u") TOP OVER CONTACT
AREA, 100u" Min MATTE TIN TOP OVER SOLDER AREA,
50u" Min NICKEL UNDER PLATE.
SHELL: CARBON STEEL, 100u" Min NICKEL TOP OVER,
50u" Min COPPER UNDER PLATE.
HARPOON: COPPER ALLOY, 100u" Min MATTE TIN PLATED.
NUT: COPPER ALLOY, 50u" Min NICKEL PLATED.
3. PART NUMBER DESCRIPTION: 10090929-S XX X X LF



POS.	A	B	C	D	E
15	30.81	24.99	16.33	2.29	19.10
26	39.24	33.32	24.66	2.29	27.75
44	53.04	47.04	38.38	2.29	41.30
62	69.32	63.50	54.84	2.41	57.40



FOR 15P

mat'l. code				tolerances unless otherwise specified				CUSTOMER COPY				title			
ltr	ecn no	dr	date	lineor	.XX ± 0.38	.XX ± 0.25	.XXX ± 0.10	projection	MM	product family	D-SUB	code	H/D D-SUB FEMALE STRAIGHT	size	dwg no
B								angles	0° ±2°	dr	JASON HSU	10/19/10	engr	JASON HSU	10/19/10
								chr	GARY HSIEH	10/19/10	scale	1:1	appr	JOSEPH HSA	10/19/10
sheet	revision														
index	sheet														



www.fciconnect.com

1 | 2

1 | 2

3 |

4

ACAD

PDM: Rev:B

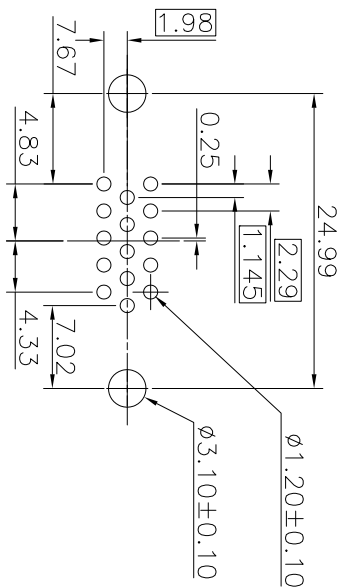
STATUS: Released

Printed: Nov 02, 2010

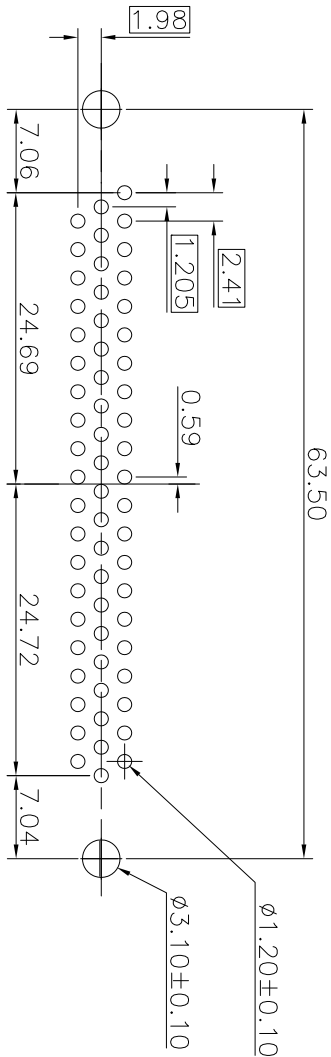
3 |

code code

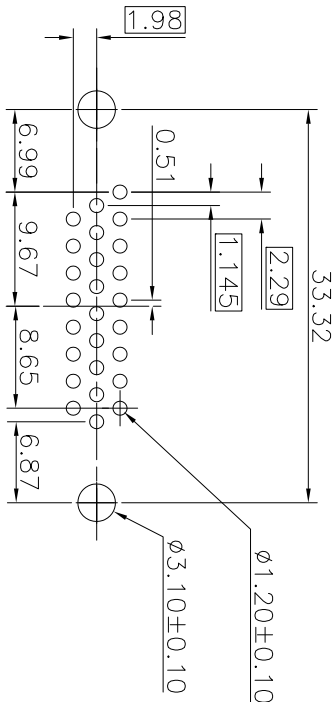
4



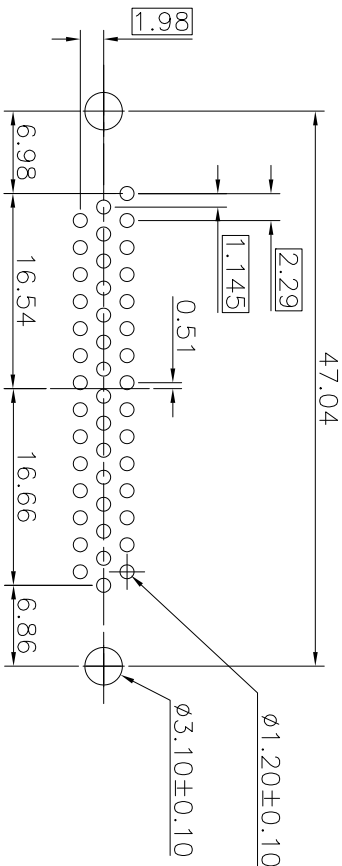
P.C.B LAYOUT(FOR 15P)



P.C.B LAYOUT(FOR 62P)



P.C.B LAYOUT(FOR 26P)



P.C.B LAYOUT(FOR 44P)

mat'l. code				tolerances unless otherwise specified				CUSTOMER COPY		title		www.fciconnect.com	
ltr	ecn no	dr	date	linear	XX ± 0.38	.XX ± 0.25	.XXX ± 0.10	projection	MM	H/D	D-SUB FEMALE STRAIGHT PCB	product family	D-SUB
B				angles	0° ± 2°								
				dr	JASON HSU	10/19/10							
				engr	JASON HSU	10/19/10							
				chr	GARY HSEH	10/19/10							
				appd	JOSEPH HSA	10/19/10							
sheet	revision												
index	sheet												

1 | 2

ACAD

PDM: Rev:B

STATUS:Released Printed:Nov 02, 2010

3 |

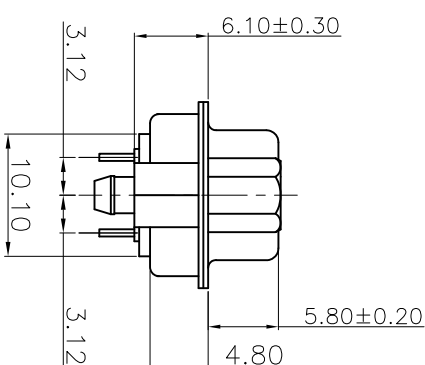
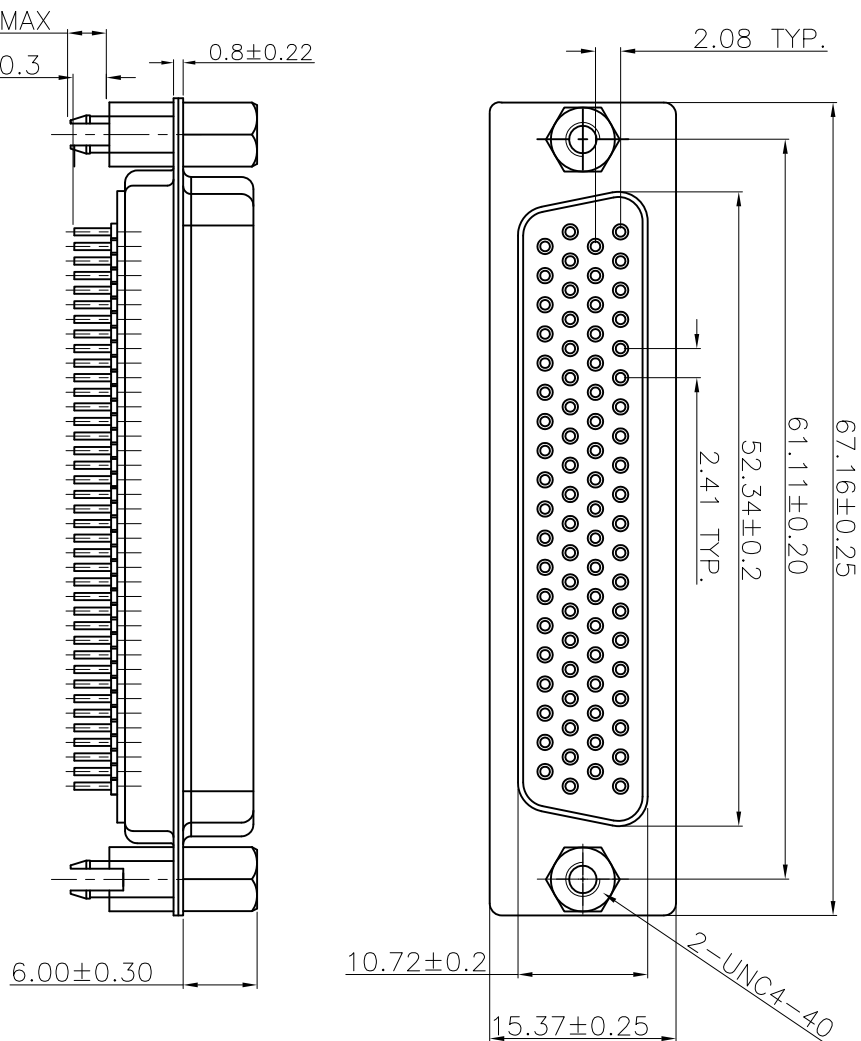
code code

4

1 | 2

3 |

4



- REMARK:
1. CHARACTERISTICS:-
- RATED VOLTAGE: 250V
- RATED CURRENT: 2.5AMP
- CONTACT RESISTANCE: 35mohms MAX. INITIAL,
5mohms MAX. AFTER.
- INSULATION RESISTANCE: 5000Mohms MIN AT 500V DC
- DIELECTRIC STRENGTH: 750VRMS
- OPERATING TEMPERATURE RANGE: -55°C ~+105°C
- INSERTION/EXTRACTION FORCE PER CONTACT: ≤5 Max./0.2N Min.
- MATING/DUMATING CYCLES: 200MATINGS MIN FOR GOLD-PLASH
500MATINGS MIN FOR 30μ" GOLD.
2. MATERIAL:
- INSULATORS: THERMOPLASTIC C. F.(UL94=0) BLACK
- CONTACTS: COPPER ALLOY, 60LD(G/F OR 30U") TOP OVER CONTACT AREA, 100μ" Min MATE TIN TOP OVER SOLDER AREA,
500μ" Min NICKEL UNDER PLATE.
- SHELL: CARBON STEEL, 1000μ" Min NICKEL TOP OVER,
500μ" Min COPPER UNDER PLATE.
- HARPOON: COPPER ALLOY , 100μ" Min MATE TIN PLATED,
NITR. COPPER ALLOY , 500μ" Min NICKEL PLATED.
3. PART NUMBER DESCRIPTION:-

10090929-S XX X X LP

SERIES NO.

TYPE

S. SMOKE (FRAME)

NUMBER OF CONTRACTS

7E-7B-FIN

IF. ROHS COMPL.

FLANGE MOUNTING O

V. INC #4-0 SPOKELOOKS

CONTACT FINISH

4. FLUSH GOLD

6. 300 GOLD

PART NO.: 10090929-S78*VLF

[illegible]