

Application Specific Quick Turn Clock™

For use with Sigma Designs SMP8644/42 and SMP8654/52

ELECTRICAL SPECIFICATIONS
ABSOLUTE MAXIMUM RATINGS

PARAMETERS	SYMBOL	MIN.	MAX.	UNITS
Supply Voltage Range	V_{DD}	-0.5	4.6	V
Input Voltage Range	V_I	-0.5	$V_{DD}+0.5$	V
Output Voltage Range	V_O	-0.5	$V_{DD}+0.5$	V
Soldering Temperature (Green package)			260	°C
Storage Temperature	T_S	-65	150	°C
Ambient Operating Temperature*		-40	85	°C

Exposure of the device under conditions beyond the limits specified by Maximum Ratings for extended periods may cause permanent damage to the device and affect product reliability. These conditions represent a stress rating only, and functional operations of the device at these or any other conditions above the operational limits noted in this specification is not implied. *Operating temperature is guaranteed by design. Parts are tested to commercial grade only.

GENERAL ELECTRICAL SPECIFICATIONS

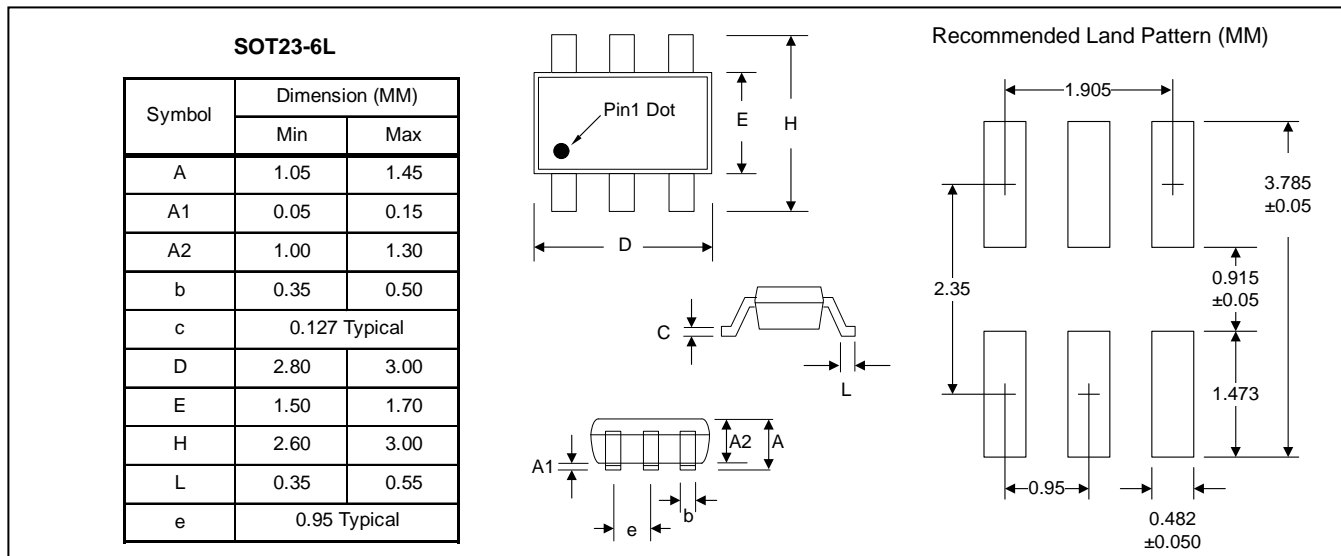
PARAMETERS	SYMBOL	CONDITIONS	MIN.	TYP.	MAX.	UNITS
Supply Current, Dynamic	I_{DD}	Load=15pF			20	mA
Operating Voltage	V_{DD}		2.97		3.63	V
Output Low Voltage	V_{OL}	$I_{OL} = +4mA$			0.4	V
Output High Voltage	V_{OH}	$I_{OH} = -4mA$	$V_{DD} - 0.4$			V
Output Current	I_{OSD}	$V_{OL} = 0.4V, V_{OH} = 2.4V$	10			mA
Settling Time		At power-up ($V_{DD} > 2.97V$)			2	ms
Output Rise Time	t_r	15pF Load, 10/90% V_{DD}		2.5	3.5	ns
Output Fall Time	t_f	15pF Load, 90/10% V_{DD}		2.5	3.5	ns
Duty Cycle		At $V_{DD}/2$	45	50	55	%

CRYSTAL SPECIFICATIONS

PARAMETERS	SYMBOL	MIN.	TYP.	MAX.	UNITS
Fundamental Crystal Resonator Frequency	F_{XIN}		27		MHz
Crystal Loading Rating	$C_L (xtal)$		18		pF
Maximum Sustainable Drive Level				500	μW
Operating Drive Level			100		μW
Crystal Shunt Capacitance	C_0			6	pF
Effective Series Resistance, Fundamental	ESR			30	Ω

Application Specific Quick Turn Clock™
For use with Sigma Designs SMP8644/42 and SMP8654/52

PACKAGE DRAWING (GREEN PACKAGE COMPLIANT)

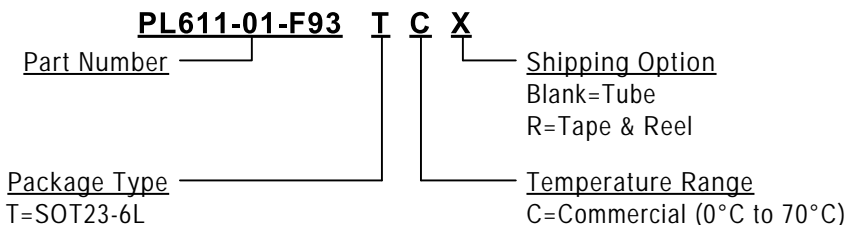


ORDERING INFORMATION (GREEN PACKAGE COMPLIANT)

For part ordering, please contact our Sales Department:
 47745 Fremont Blvd., Fremont, CA 94538, USA
 Tel: (510) 492-0990 Fax: (510) 492-0991

PART NUMBER

The order number for this device is a combination of the following:
 Part number, Package type and Operating temperature range



Part / Order Number	Marking*	Package Option
PL611-01-F93TC-R	C1F93 LLL	6-Pin SOT-23 (Tape and Reel)

*Note: LLL represents the production lot number

PhaseLink Corporation, reserves the right to make changes in its products or specifications, or both at any time without notice. The information furnished by Phaselink is believed to be accurate and reliable. However, PhaseLink makes no guarantee or warranty concerning the accuracy of said information and shall not be responsible for any loss or damage of whatever nature resulting from the use of, or reliance upon this product.

LIFE SUPPORT POLICY: PhaseLink's products are not authorized for use as critical components in life support devices or systems without the express written approval of the President of PhaseLink Corporation.