

# 100k $\Omega$ Precision-Matched Resistor-Divider in SOT23

## ABSOLUTE MAXIMUM RATINGS

Voltage Between P1 and P2.....100V  
 Maximum Current into Any Pin ..... $\pm 1.00\text{mA}$   
 Continuous Power Dissipation ( $T_A = +70^\circ\text{C}$ )  
   3-Pin SOT23 (derate 7.1mW/ $^\circ\text{C}$  above  $+70^\circ\text{C}$ ).....571.4mW  
   3-Pin SOT23 ( $\theta_{JA}$ ) .....141 $^\circ\text{C/W}$

Operating Temperature Range ..... $-55^\circ\text{C}$  to  $+125^\circ\text{C}$   
 Junction Temperature ..... $+150^\circ\text{C}$   
 Storage Temperature Range ..... $-65^\circ\text{C}$  to  $+150^\circ\text{C}$   
 Lead Temperature (soldering, 10s) ..... $+300^\circ\text{C}$

Stresses beyond those listed under "Absolute Maximum Ratings" may cause permanent damage to the device. These are stress ratings only, and functional operation of the device at these or any other conditions beyond those indicated in the operational sections of the specifications is not implied. Exposure to absolute maximum rating conditions for extended periods may affect device reliability.

## DC ELECTRICAL CHARACTERISTICS

( $T_A = -55^\circ\text{C}$  to  $+125^\circ\text{C}$ , unless otherwise noted. Typical values are at  $T_A = +25^\circ\text{C}$ .) (Note 1)

| PARAMETER   | SYMBOL      | CONDITIONS                                 | MIN | TYP        | MAX         | UNITS                 |
|---|-------------|--|-----|------------|-------------|-----------------------|
| Initial Resistor Ratio Error (Note 2)             |             | MAX5490_A, $T_A = +25^\circ\text{C}$       |     |            | $\pm 0.035$ | %                     |
|   |             | MAX5490_B, $T_A = +25^\circ\text{C}$       |     |            | $\pm 0.05$  |                       |
|   |             | MAX5490_C, $T_A = +25^\circ\text{C}$       |     |            | $\pm 0.1$   |                       |
| Resistance-Ratio Temperature Coefficient (Note 3) |             | $1:1 \leq \text{ratio} \leq 10:1$          |     | 1          | 2           | ppm/ $^\circ\text{C}$ |
|   |             | $10:1 \leq \text{ratio} \leq 25:1$         |     | 2          | 4           |                       |
| Absolute Temperature Coefficient of Resistance    | TCR         | (Note 4)                                   |     | 35         |             | ppm/ $^\circ\text{C}$ |
| Voltage Coefficient of Resistance                 | VCR         | (Note 5)                                   |     | 0.1        |             | ppm/V                 |
| End-to-End Resistance ( $R_1 + R_2$ )             |             | $T_A = +25^\circ\text{C}$                  | 95  | 100        | 105         | k $\Omega$            |
| Continuous Working Voltage Between P1 and P2      | $V_{P1-P2}$ |  | -80 |            | +80         | V                     |
| Continuous Current                                |             | $I_{R1}, I_{R2}$                           |     |            | 840         | $\mu\text{A}$         |
| P1, P2, P3 Capacitance                            |             |  |     | 2          |             | pF                    |
| Maximum Power Rating                              |             |  |     | 67.2       |             | mW                    |
| Resistance Ratio Long-Term Stability              |             | 2000 hours at $+70^\circ\text{C}$          |     | $\pm 0.03$ |             | %                     |
| -3dB Bandwidth                                    | $f_{3dB}$   | 1:1 ratio (Note 6)                         |     | 3          |             | MHz                   |
| Thermal Noise                                     |             |  |     | 45         |             | $\mu\text{VRMS}$      |
| Current Noise                                     |             | In accordance with MIL-STD-2020 method 30B |     | -25        |             | dB                    |

**Note 1:** The MAX5490 is 100% production tested at  $T_A = +25^\circ\text{C}$ . Specifications over  $-55^\circ\text{C}$  to  $+125^\circ\text{C}$  are guaranteed by design and characterization.

**Note 2:** Testing conditions:  $T_A = +25^\circ\text{C}$ ,  $V_{P1-P2} = 10\text{V}$  and  $80\text{V}$ .

**Note 3:** Resistance-ratio temperature coefficient is defined as  $\left| \frac{\Delta \left( \frac{R_1}{R_2} \right)}{\frac{R_1}{R_2} \times \Delta T} \right|$  and is guaranteed by design, not production tested.  
 For ratios from 25:1 to 100:1, contact factory.

**Note 4:** Absolute TCR is defined as  $\left| \frac{\Delta(R_1 + R_2)}{(R_1 + R_2) \times \Delta T} \right|$  and is tested at  $10\text{V}$  and  $80\text{V}$ .

# 100kΩ Precision-Matched Resistor-Divider in SOT23

## DC ELECTRICAL CHARACTERISTICS (continued)

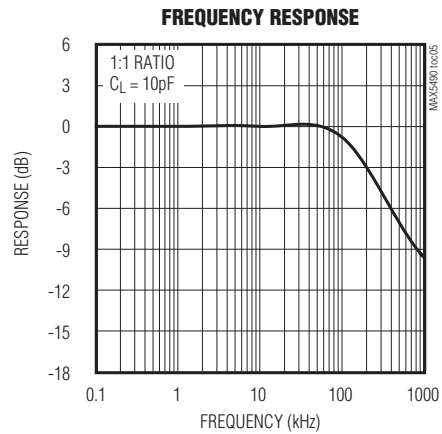
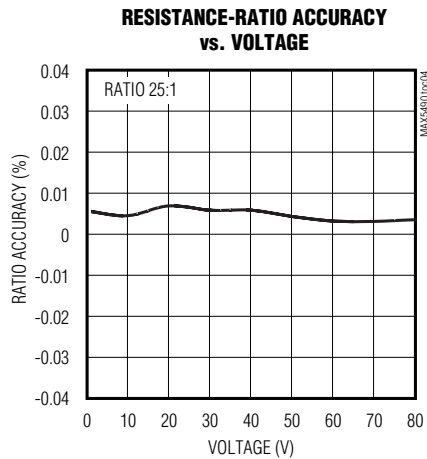
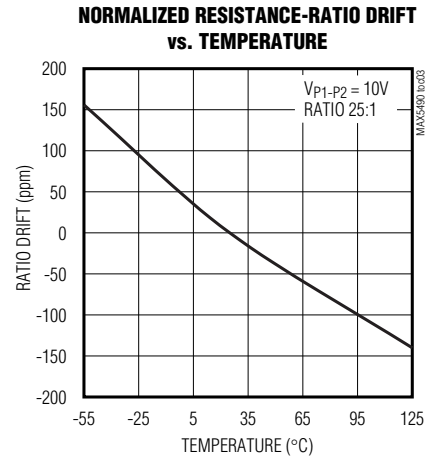
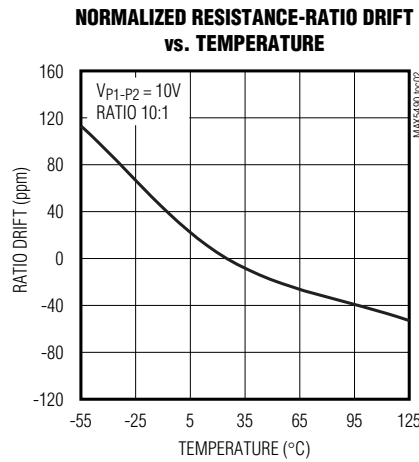
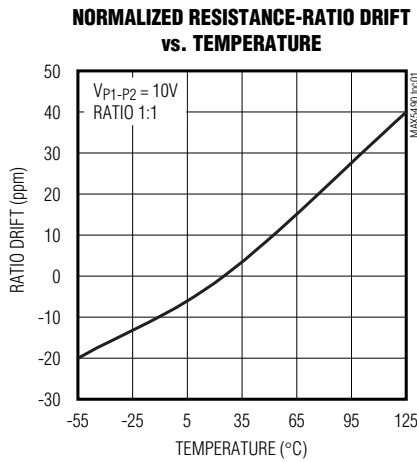
( $T_A = -55^\circ\text{C}$  to  $+125^\circ\text{C}$ , unless otherwise noted. Typical values are at  $T_A = +25^\circ\text{C}$ .) (Note 1)

**Note 5:** Resistance-ratio voltage coefficient is defined as  $\left| \frac{\Delta \left( \frac{R_1}{R_2} \right)}{\frac{R_1}{R_2} \times \Delta V} \right|$  and is guaranteed by design, not production tested.

**Note 6:** Calculate bandwidth by using  $\frac{1}{2\pi RC}$ , where  $C = C_{P3}$  and  $R = \frac{R_1 \times R_2}{R_1 + R_2}$ .

## Typical Operating Characteristics

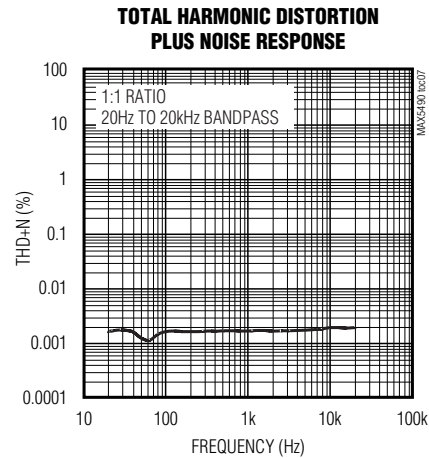
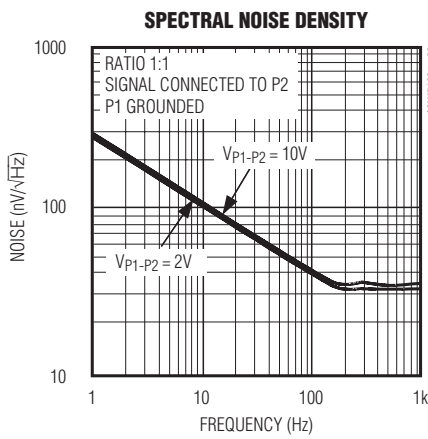
( $V_{P1-P2} = 10\text{V}$ ,  $T_A = +25^\circ\text{C}$ , unless otherwise noted.)



# 100kΩ Precision-Matched Resistor-Divider in SOT23

## Typical Operating Characteristics (continued)

(V<sub>P1-P2</sub> = 10V, T<sub>A</sub> = +25°C, unless otherwise noted.)



## Pin Description

| PIN | NAME | FUNCTION                           |
|-----|------|------------------------------------|
| 1   | P1   | R <sub>1</sub> Connection Terminal |
| 2   | P2   | R <sub>2</sub> Connection Terminal |
| 3   | P3   | Set-Point Connection Terminal      |

## Detailed Description

As shown in the *Block Diagram*, the MAX5490 consists of two precision, low-ratio-drift resistors with an end-to-end resistance of 100kΩ (R<sub>1</sub> + R<sub>2</sub>). P3 is the set point of the divider. The maximum working voltage of the MAX5490 is 80V. This device offers a wide range of resistance ratios (R<sub>1</sub>/R<sub>2</sub>) from 1:1 to 100:1 and is ideal for precision operational amplifier gain/attenuation control. A maximum initial ratio accuracy of 0.035% and a low 1ppm/°C ratio drift enhance system accuracy.

## Applications Information

### Self-Heating and Error

Applying a voltage across terminals P1 and P2 causes the device to heat up due to power dissipation. In high-voltage applications, consider the error in resistance-ratio temperature coefficient caused by self-heating.

The worst-case self-heating occurs when the operating voltage attains its maximum value. Approximate the result of power dissipation under this condition as:

$$P_{DISS} = \frac{(V_{MAX})^2}{R} = \frac{(80V)^2}{100k\Omega} = 64mW$$

The thermal resistance from junction to ambient,  $\theta_{JA}$ , for a 3-pin SOT23 package is 141°C/W. Calculate the resulting temperature rise as:

$$\Delta T = 64mW \times 141^\circ C/W = 9.02^\circ C$$

If the ratio temperature coefficient is 1ppm/°C (typ), the total error introduced by self-heating is:

$$9.02^\circ C \times 1ppm/^\circ C = 9.02ppm$$

# 100kΩ Precision-Matched Resistor-Divider in SOT23

## Typical Applications

MAX5490

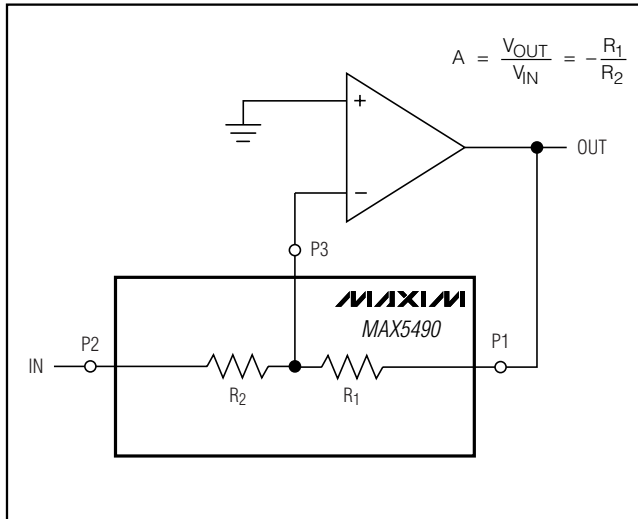


Figure 1. Inverting Amplifier Configuration

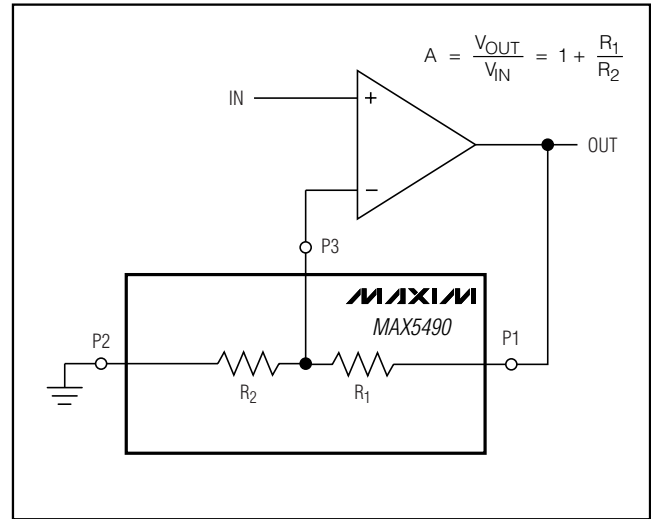


Figure 2. Noninverting Amplifier Configuration

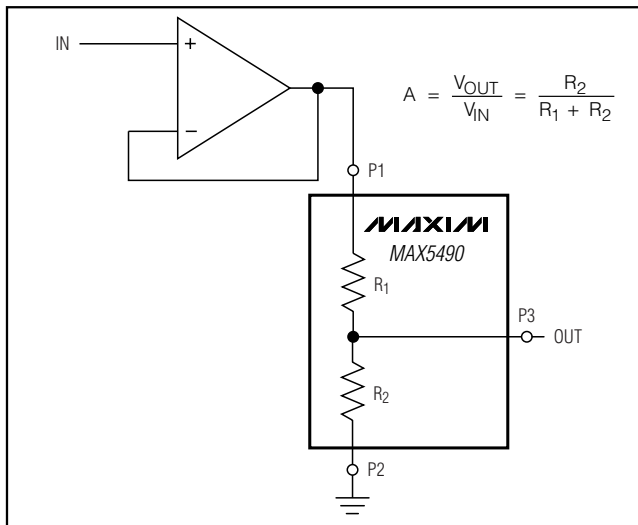


Figure 3. Buffered Attenuator

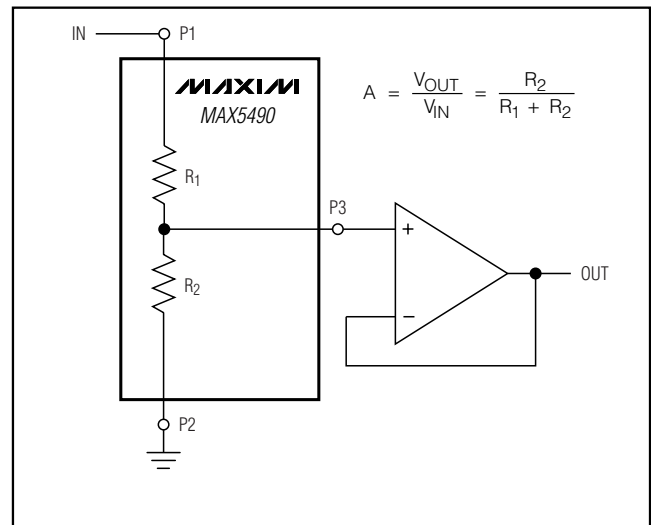


Figure 4. Attenuator with Buffer

# 100k $\Omega$ Precision-Matched Resistor-Divider in SOT23

## How to Order

### PREFIX

MAX

### ROOT PART NUMBER

MAX5490 = 100k $\Omega$  end-to-end

### RATIO RANGE

L through W. Resistor ratio must fall in the appropriate ratio range. (See Table 2.)

### RATIO ACCURACY

A = 0.035% (max); B = 0.05% (max); C = 0.1% (max)

### RESISTANCE RATIO

Five number ratio designator. Ratios available from 1:1 to 100:1.

### Format examples:

01000 = 1:1

02500 = 2.5:1

07538 = 7.538:1

00000 = 100:1

### TAPE AND REEL

## Example Part Numbers

| PART NUMBER      | RESISTOR-RATIO RANGE | RESISTOR-RATIO ACCURACY (% MAX) | RESISTOR RATIO |
|------------------|----------------------|---------------------------------|----------------|
| MAX5490PA02500-T | 2.000 to 2.999       | 0.035                           | 2.5:1          |
| MAX5490RB03000-T | 3.000 to 3.999       | 0.05                            | 3:1            |
| MAX5490UA07538-T | 7.538 to 9.999       | 0.035                           | 7.538:1        |
| MAX5490VC10000-T | 10.000 to 19.999     | 0.1                             | 10:1           |

# 100k $\Omega$ Precision-Matched Resistor-Divider in SOT23

MAX5490

Table 1. Standard Ratios\*

| PART NUMBER      | RESISTOR RATIO | RESISTOR-RATIO SUFFIX | RESISTOR-RATIO ACCURACY (% MAX) | TOP MARK |
|------------------|----------------|-----------------------|---------------------------------|----------|
| MAX5490GA01000-T | 1:1            | 01000                 | 0.035                           | FZQG     |
| MAX5490GB01000-T | 1:1            | 01000                 | 0.05                            | FZQH     |
| MAX5490GC01000-T | 1:1            | 01000                 | 0.1                             | FZQI     |
| MAX5490MA02000-T | 2:1            | 02000                 | 0.035                           | FZRQ     |
| MAX5490MB02000-T | 2:1            | 02000                 | 0.05                            | FZRR     |
| MAX5490MC02000-T | 2:1            | 02000                 | 0.1                             | FZRS     |
| MAX5490TA05000-T | 5:1            | 05000                 | 0.035                           | FZQJ     |
| MAX5490TB05000-T | 5:1            | 05000                 | 0.05                            | FZQK     |
| MAX5490TC05000-T | 5:1            | 05000                 | 0.1                             | FZQL     |
| MAX5490VA10000-T | 10:1           | 10000                 | 0.035                           | FZQP     |
| MAX5490VB10000-T | 10:1           | 10000                 | 0.05                            | FZQQ     |
| MAX5490VC10000-T | 10:1           | 10000                 | 0.1                             | FZQR     |
| MAX5490XA25000-T | 25:1           | 25000                 | 0.035                           | FZQV     |
| MAX5490XB25000-T | 25:1           | 25000                 | 0.05                            | FZQW     |
| MAX5490XC25000-T | 25:1           | 25000                 | 0.1                             | FZQX     |

\*Standard ratios are available for ordering in any quantity. Nonstandard ratios are also available for values between 1:1 to 100:1. A minimum order quantity of 10,000 units is required for nonstandard ratios. Please contact factory for more information.

Table 2. Ratio Ranges

| LETTER SUFFIX | RESISTOR-RATIO RANGE |
|---------------|----------------------|
| G             | 1.0 to 1.099         |
| H             | 1.1 to 1.199         |
| J             | 1.2 to 1.399         |
| K             | 1.4 to 1.599         |
| L             | 1.6 to 1.899         |
| M             | 1.9 to 2.099         |
| N             | 2.1 to 2.499         |
| P             | 2.5 to 2.999         |
| R             | 3.0 to 3.499         |
| S             | 3.5 to 4.499         |
| T             | 4.5 to 5.999         |
| U             | 6.0 to 8.999         |
| V             | 9.0 to 13.999        |
| W             | 14.0 to 24.999       |
| X             | 25.0 to 49.999       |
| Y             | 50.0 to 74.999       |
| Z             | 75.0 to 100.0        |

## Chip Information

TRANSISTOR COUNT: 0

PROCESS: BiCMOS

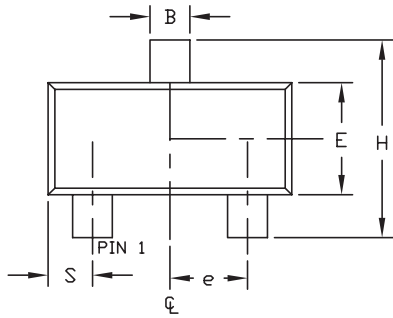
# 100kΩ Precision-Matched Resistor-Divider in SOT23

## Package Information

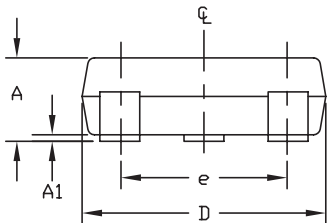
(The package drawing(s) in this data sheet may not reflect the most current specifications. For the latest package outline information, go to [www.maxim-ic.com/packages](http://www.maxim-ic.com/packages).)

### NOTES:

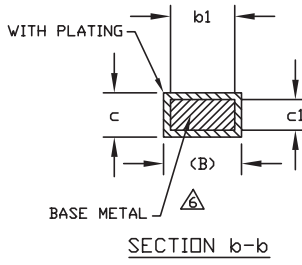
1. D&E DO NOT INCLUDE MOLD FLASH.
2. MOLD FLASH OR PROTRUSIONS NOT TO EXCEED .15mm (.006").
3. CONTROLLING DIMENSION: MILLIMETERS.
4. REFERENCE JEDEC TO236-VARIATION AB.
5. LEADS TO BE COPLANAR WITHIN 0.10mm.
- △ DIMENSIONS MEASURED AT FLAT SECTION OF LEAD BETWEEN 0.08mm AND 0.15mm FROM LEAD TIP.



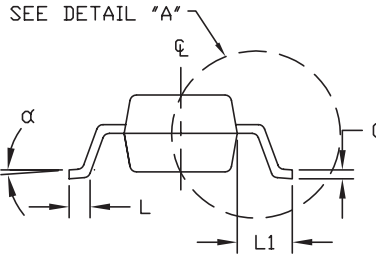
TOP VIEW



FRONT VIEW



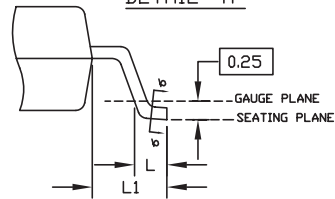
SECTION b-b



SIDE VIEW

| DIM | INCHES |       | MILLIMETERS |       |
|-----|--------|-------|-------------|-------|
|     | MIN    | MAX   | MIN         | MAX   |
| A   | 0.035  | 0.044 | 0.890       | 1.120 |
| A1  | 0.001  | 0.004 | 0.013       | 0.100 |
| B   | 0.015  | 0.020 | 0.370       | 0.500 |
| b1  | 0.012  | 0.018 | 0.300       | 0.450 |
| c   | 0.003  | 0.071 | 0.085       | 0.180 |
| c1  | 0.003  | 0.071 | 0.080       | 0.160 |
| D   | 0.110  | 0.120 | 2.800       | 3.040 |
| E   | 0.047  | 0.055 | 1.200       | 1.400 |
| e   | 0.037  | BSC.  | 0.950       | BSC.  |
| e1  | 0.075  | BSC.  | 1.900       | BSC.  |
| H   | 0.083  | 0.104 | 2.100       | 2.640 |
| L   | 0.015  | 0.023 | 0.400       | 0.600 |
| L1  | 0.021  | REF   | 0.54        | REF   |
| S   | 0.018  | 0.024 | 0.45        | 0.60  |
| α   | 0°     | 8°    | 0°          | 8°    |

DETAIL "A"



|  |                                 |   |     |
|--|---------------------------------|---|-----|
|  <b>DALLAS</b><br>SEMICONDUCTOR |                                 |  |     |
| PROPRIETARY INFORMATION  |                                 |   |     |
| TITLE:<br>PACKAGE OUTLINE, 3L SOT-23   |                                 |   |     |
| APPROVAL   | DOCUMENT CONTROL NO.<br>21-0051 | REV.<br>F   | 1/1 |

SOT23 LEPS

Maxim cannot assume responsibility for use of any circuitry other than circuitry entirely embodied in a Maxim product. No circuit patent licenses are implied. Maxim reserves the right to change the circuitry and specifications without notice at any time.

8 Maxim Integrated Products, 120 San Gabriel Drive, Sunnyvale, CA 94086 408-737-7600

© 2005 Maxim Integrated Products Printed USA MAXIM is a registered trademark of Maxim Integrated Products, Inc.