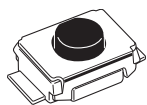


## ■ Dimensions (Unit: mm)

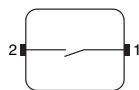
### Top-actuated Models

#### Without Ground Terminal, without Boss

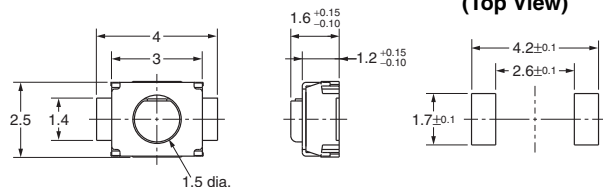
B3U-1000P(M)



Terminal Arrangement  
/Internal Connections  
(Top View)

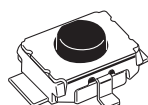


PCB Pad  
(Top View)

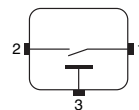


#### With Ground Terminal, without Boss

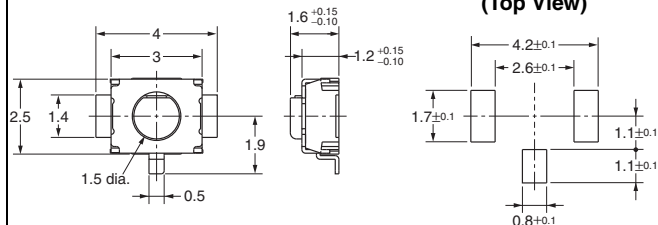
B3U-1100P(M)



Terminal Arrangement  
/Internal Connections  
(Top View)

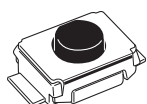


PCB Pad  
(Top View)



#### Without Ground Terminal, with Boss

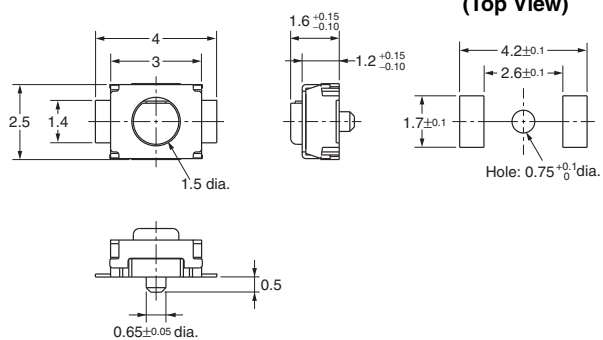
B3U-1000P(M)-B



Terminal Arrangement  
/Internal Connections  
(Top View)

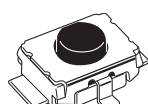


PCB Pad  
(Top View)

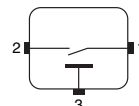


#### With Ground Terminal, with Boss

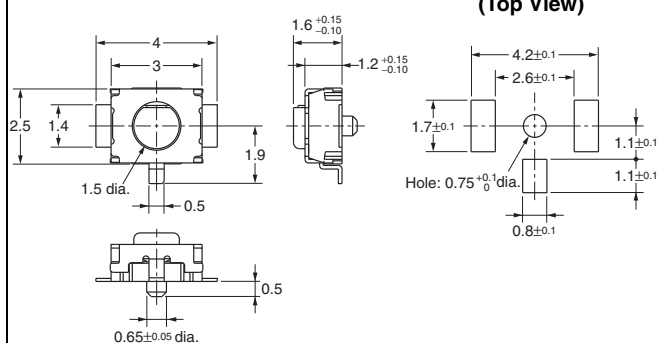
B3U-1100P(M)-B



Terminal Arrangement  
/Internal Connections  
(Top View)



PCB Pad  
(Top View)



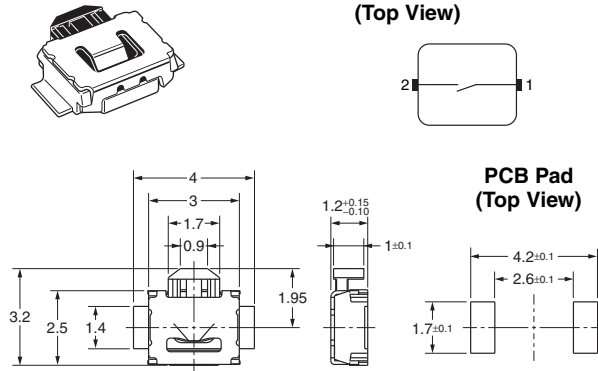
**Note:** Unless otherwise specified, a tolerance of  $\pm 0.2$  mm applies to all dimensions. No terminal numbers are indicated on the Switches.

## Side-actuated Models

## Without Ground Terminal, without Boss

**B3U-3000P(M)**

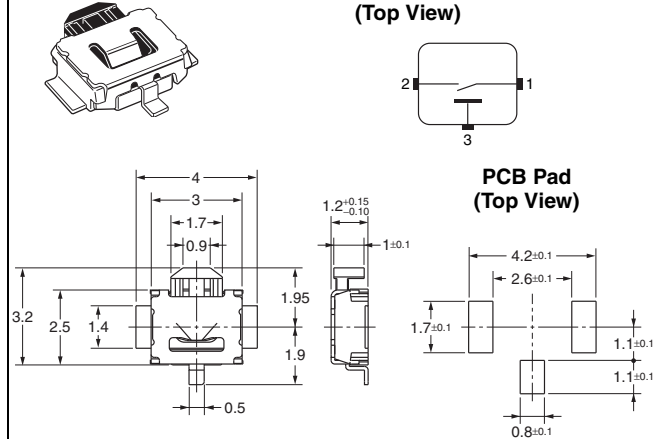
### Terminal Arrangement /Internal Connections (Top View)



### With Ground Terminal, without Boss

**B3U-3100P(M)**

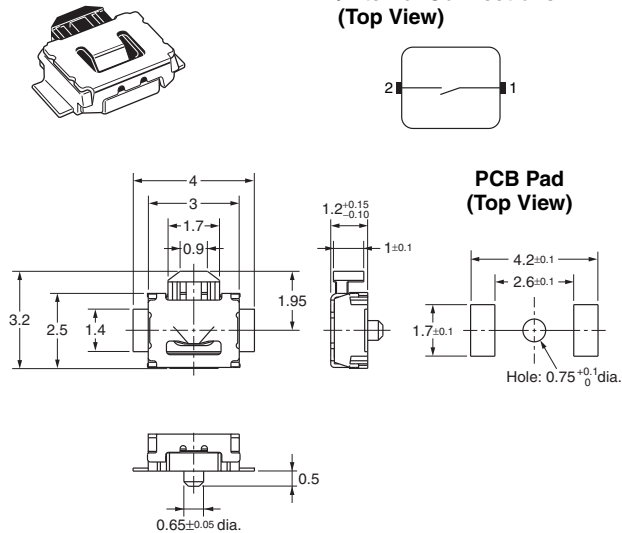
### Terminal Arrangement /Internal Connections (Top View)



### Without Ground Terminal, with Boss

**B3U-3000P(M)-B**

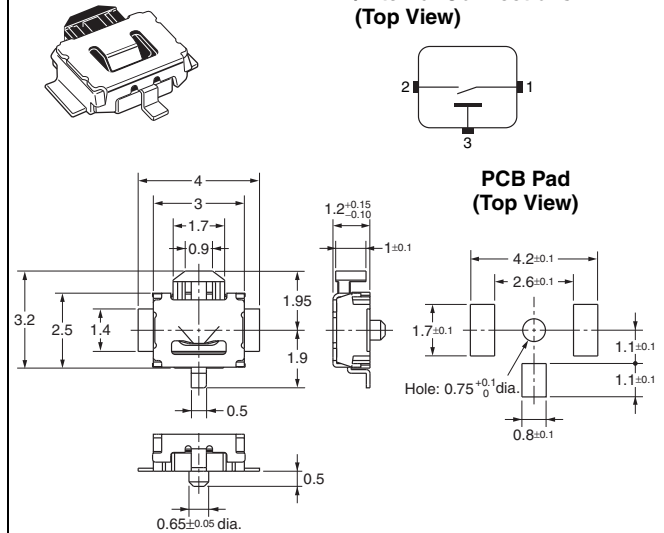
### Terminal Arrangement /Internal Connections (Top View)



### With Ground Terminal, with Boss

**B3U-3100P(M)-B**

### Terminal Arrangement /Internal Connections (Top View)



**Note:** Unless otherwise specified, a tolerance of  $\pm 0.2$  mm applies to all dimensions. No terminal numbers are indicated on the Switches.

## ■ Precautions

Be sure to read the precautions common to all Tactile Switches on pages for correct use.

Please check each region's Terms & Conditions by region website.

## OMRON Corporation

Electronic and Mechanical Components Company

### Regional Contact

**Americas**

<https://www.components.omron.com/>

**Asia-Pacific**

<https://ecb.omron.com.sg/>

**Korea**

<https://www.omron-ecb.co.kr/>

**Europe**

<http://components.omron.eu/>

**China**

<https://www.ecb.omron.com.cn/>

**Japan**

<https://www.omron.co.jp/ecb/>

© OMRON Corporation 2007-2018 All Rights Reserved.

In the interest of product improvement, specifications are subject to change without notice.

**Cat. No. A162-E1-07**  
0318(0207)(O)