



Product Environmental Compliance	<p>MD_5352068-1_06142018850_dmtec</p> <p>📄 ENG_PC_MD_5352068-1_W(666250).xlsx</p> <p>English</p> <p>MD_5352068-1_06142018850_dmtec</p> <p>📄 ENG_PC_MD_5352068-1_W(886253).xml</p> <p>English</p>
Agency Approvals	<p>UL Report</p> <p>📄 ENG_AAD_UL_E28476_19931215_A.pdf</p> <p>English</p>
<p>Please review product documents or contact us for the latest agency approval information. Please Note: Use the Product Drawing for all design activity.</p>	
Product Type Features	<p>Ground Component Type : Ground Return Shielding</p> <p>PCB Connector Assembly Type : PCB Mount Receptacle</p> <p>Connector System : Board-to-Board</p> <p>Sealable : No</p> <p>Connector & Contact Terminates To : Printed Circuit Board</p> <p>Backplane Interface Type : 2mm HM</p>
Configuration Features	<p>Number of Signal Positions : 110</p> <p>Rows Loaded : A, B, C, D, E</p> <p>Mating & Unmating Configuration : Make First / Break Last</p> <p>Number of Columns : 22</p> <p>Number of Rows : 5</p> <p>Backplane Architecture : Mezzanine</p> <p>Number of Positions : 110</p> <p>PCB Mount Orientation : Right Angle</p>
Signal Characteristics	<p>Data Rate (Gb/s): ≤1</p> <p>Crosstalk Version : Standard</p>
Contact Features	<p>Contact Base Material : Phosphor Bronze</p> <p>PCB Contact Termination Area Plating Material : Tin</p> <p>Contact Underplating Material : Nickel</p> <p>Contact Type : Socket</p> <p>CompactPCI Designation : J1/J4</p> <p>Contact Mating Area Plating Material : Tin</p> <p>Contact Mating Area Plating Material Thickness : 1.27 μm [50 μin]</p> <p>Contact Current Rating (Max) (A): 1.5</p> <p>Feedthrough Post Length (mm): 3.7</p>
Termination Features	<p>Termination Method to Printed Circuit Board : Through Hole - Press-Fit</p>
Mechanical Attachment	<p>Mating Alignment Type : Multi-Purpose Center</p> <p>Connector Mounting Type : Board Mount</p>

Housing Features	Housing Material : Polyester - GF Centerline (Pitch) : 3.7 mm [.145 in] Housing Color : Gray
Dimensions	Backplane Module Length (mm): 50
Usage Conditions	Operating Temperature Range : -55 – 125 °C [-67 – 257 °F]
Operation/Application	Shielded : Yes Circuit Application : Power & Signal
Industry Standards	UL Flammability Rating : UL 94V-0 AdvancedTCA Specified Product : No
Packaging Features	Packaging Quantity : 11 Packaging Method : Tube
Other	Comment : Female connector with pre-installed shield.
Statement of Compliance	Statement of Compliance pdf

Products with Similar Specs

[View All Similar Products](#)

THIS PRODUCT

HARD METRIC BACKPLANE CONNECTORS

5352068-1

Z-PACK 2mm HM, Hard Metric Backplane Connectors, PCB...



From

In-Stock

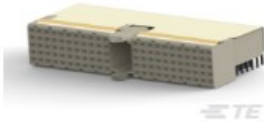
PCB Connector Assembly Type : **PCB Mount Receptacle**
Data Rate : **≤1 Gb/s**
Number of Columns : **22**
Number of Rows : **5**
Backplane Architecture : **Mezzanine**

TOP RESULTS ?

HARD METRIC BACKPLANE CONNECTORS

5352068-4

Z-PACK 2mm HM, Hard Metric Backplane Connectors, PCB...



From

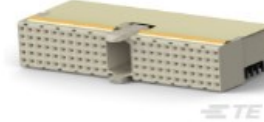
In-Stock

PCB Connector Assembly Type : **PCB Mount Receptacle**
Data Rate : **≤1 Gb/s**
Number of Columns : **22**
Number of Rows : **5**
Backplane Architecture : **Mezzanine**

HARD METRIC BACKPLANE CONNECTORS

5352068-9

Z-PACK 2mm HM, Hard Metric Backplane Connectors, PCB...



From

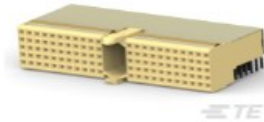
In-Stock

PCB Connector Assembly Type : **PCB Mount Receptacle**
Data Rate : **≤1 Gb/s**
Number of Columns : **22**
Number of Rows : **5**
Backplane Architecture : **Mezzanine**

HARD METRIC BACKPLANE CONNECTORS

1857994-1

Z-PACK 2mm HM, Hard Metric Backplane Connectors, PCB...



From

In-Stock

PCB Connector Assembly Type : **PCB Mount Receptacle**
Data Rate : **≤1 Gb/s**
Number of Columns : **22**
Number of Rows : **5**
Backplane Architecture : **Mezzanine**



Backplane Coding
Keys (60)



Backplane Connector
Housings (2)



Backplane Guide
Hardware (37)



Board-to-Board
Connector Contacts
(5)