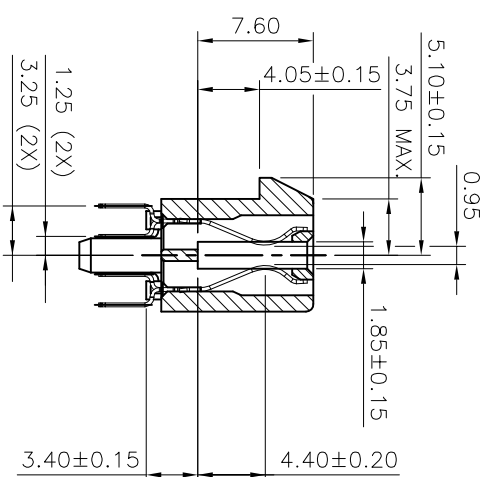
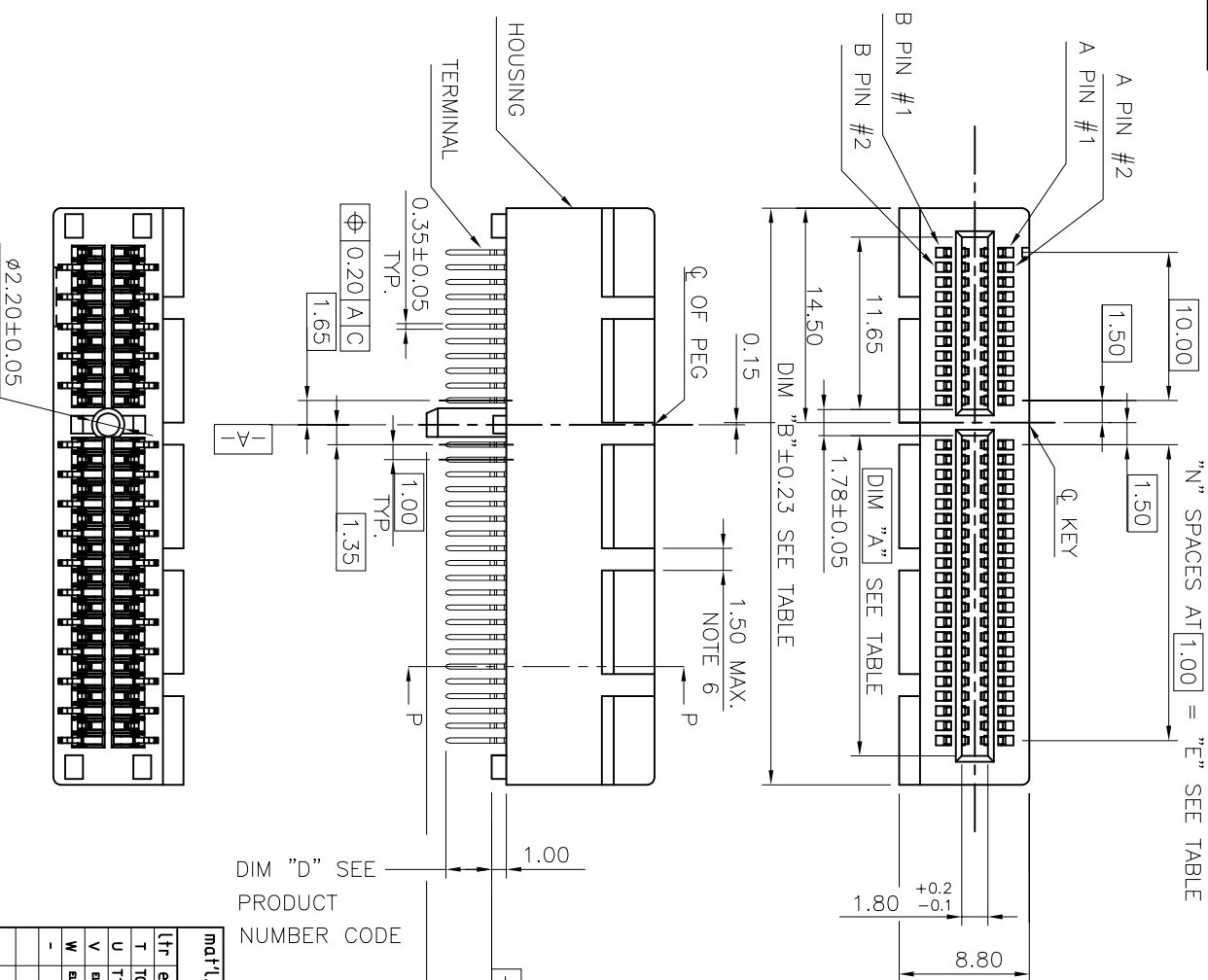


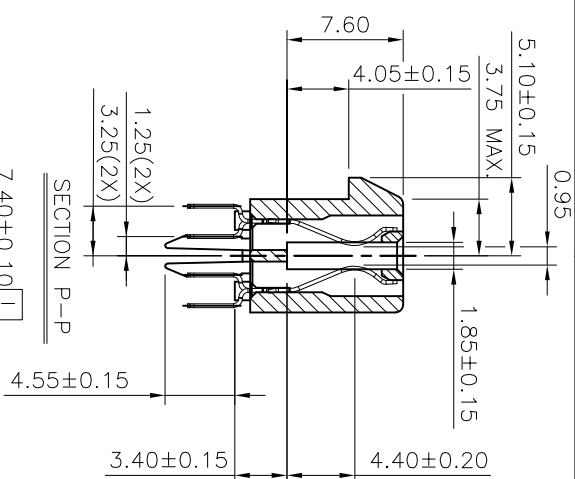
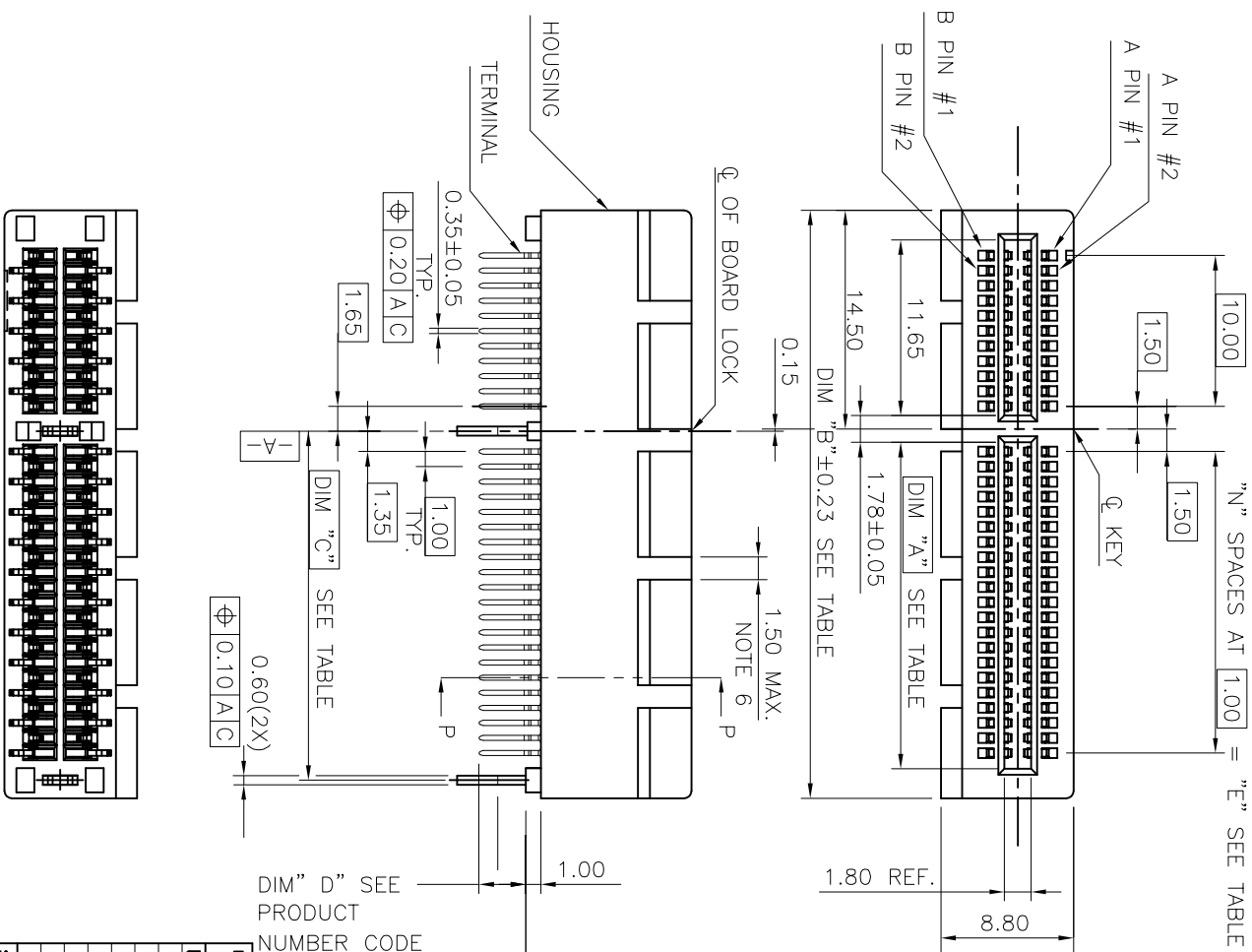
PRODUCT NO.  
10018783-X2XXXX



DIM "D" SEE  
PRODUCT  
NUMBER CODE

## SINGLE PLASTIC PEG TYPE





mat'l. code				surface	tolerance	projection	product family
tr	ecm no	dr	date	tolerances unless otherwise specified			EDGE CARD
T	T05-0208	M-W	09/15/05	angles	X±0.30	MM	PCI EXPRESS GEN3
U	T10-0007	J-H	1/20/10	0°±2°	.XX±0.20		CARD EDGE ASSY
V	EX-06-1831	S-T	07/16/14	.XXX±0.10	scale 2:1		
W	EX-06-2000	S-T	01/23/15	Stone Li	01/13/15		sheet 2 of 7
-	-	-	-	engr	Stone Li	01/13/15	size
-	-	-	-	chr	/		A4
sheet	revision			appd	Collins Lu	01/13/15	Customer Drawing
index	sheet						

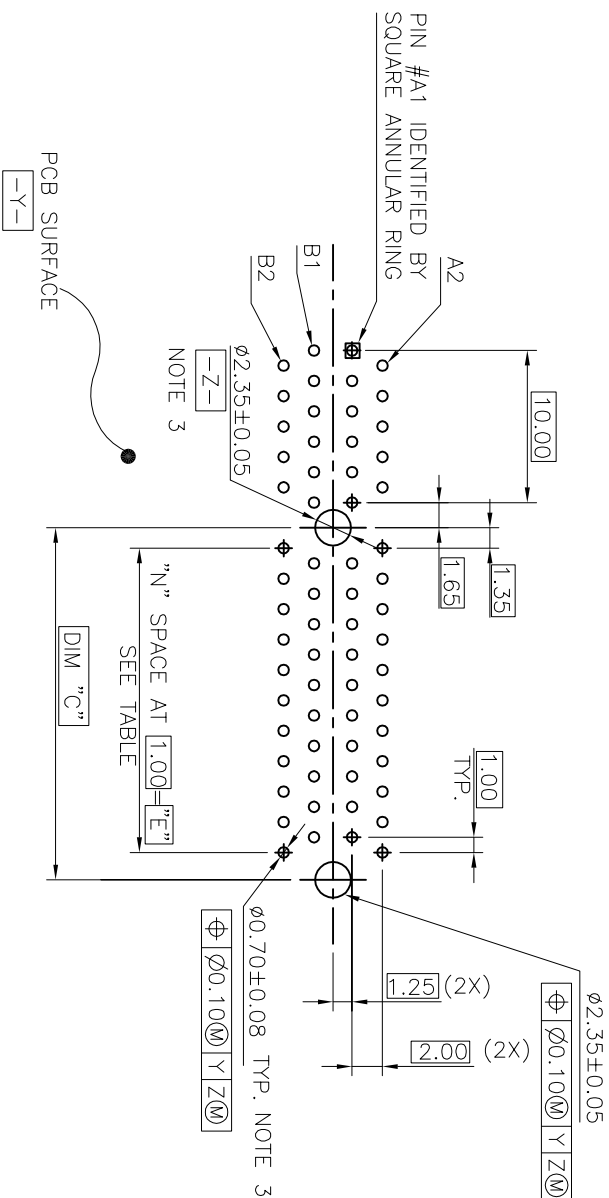


FCI LOGO SIDE

DIM" G" SEE  
PRODUCT NUMBER CODE

## METAL BOARD LOCKS TYPE

mat'l. code		surface 58/		tolerance				product family		EDGE CARD	
litr ecn no dr		date		tolerances unless otherwise specified angles 				title		PCI EXPRESS GEN3 CARD EDGE ASSY 	
T T05-0208 M-W		09/15/05		X.50 30							
U T10-0007 J-H		1/20/10		XX.50 20							
V BX-06-18311 S-T		07/16/14		0+2+2 XXXX.10		scale 2:1					
W BX-06-20070 S-T		01/23/15		Stone Li				dwg no		sheet 3 of 7	
-		-		engrl Stone Li				10018783		size A4	
-		-		chr /							
				dpd Collins Lu		01/13/15		type		Customer Drawing	
sheet		revision									
index		sheet									



—▶ I/O PANEL DIRECTION

## RECOMMENDED FOOTPRINT

mat'l. code		surface 58 / tolerance		projection		product family		EDGE CARD	
litr	ecm no	dr	date	tolerances unless otherwise specified		title		PCI EXPRESS GEN3	
T	T05-0208	M-W	09/15/05	angles		MM		CARD EDGE ASSY	
U	T10-0007	J-H	1/20/10	gls		scale 2:1		sheet 4 of 7	
V	EX-06-18311	S-T	07/16/14	σ±z				10018783	
W	EX-06-30091	S-T	01/23/15	dr				sheet 4 of 7	
-	-	-	-	engr		Stone Li		01/13/15	
-	-	-	-	chr		Stone Li		01/13/15	
-	-	-	-	dpd		Collins Lu		01/13/15	
sheet		revision		sheet		sheet		sheet	
index		sheet		sheet		sheet		sheet	



I/O PANEL DIRECTION — 

SECONDARY (SOLDER) SIDE

PIN "F" SEE TABLE 2.40±0.10

NOTE 4

## ADD-IN CARD EDGE-FINGER DIMENSIONS



Copyright FCI



FCIconnect.com



1 | 2

3 |

4

NOTES:

1. MATERIAL:

HOUSING: HIGH TEMPERATURE NYLON, GLASS FILLED UL94V-0 RATED.

TERMINAL: COPPER ALLOY.

PLATING: SEE PRODUCT NUMBER CODE

METAL BOARD LOCKS: COPPER ALLOY.

FINISH: 100u" TIN OVER 50u" NICKEL

2. PRODUCT SPECIFICATION: GS-12-233.

③ THE HORIZONTAL AXIS FOR THE HOLE PATTERN IS ESTABLISHED BY

A LINE THROUGH THE CENTER OF THE TWO  $\phi 2.35$  HOLES.

THE VERTICAL AXIS IS 90° TO THE HORIZONTAL AXIS, THROUGH THE CENTER OF DATUM Z.

④ NO THE BAR PERMITTED FROM CARD EDGE TO LEADING EDGE OF PAD FOR PINS A1 AND PIN NUMBERS "F".

⑤ CHAMFER EDGES MUST BE FREE OF CUTTING BURRS.

⑥ FREQUENCY & LOCATION AT SUPPLIER DISCRETION. RIDGE MAY BE CONTINUOUS WITH NO BREAKS.

7. ROHS COMPATIBLE PRODUCT SPECIFICATIONS:

a - PLATING:

- "LF" MEANS THE PRODUCT IS LEAD-FREE.

b - MANUFACTURING PROCESS COMPATIBILITY:

- THE HOUSING WILL WITHSTAND EXPOSURE TO 260°C±5°C TEMPERATURE FOR

10 SECONDS IN RE-FLOW APPLICATION, REFER TO GS-14-858 FOR OPERATING.

PRODUCT NUMBER CODE

10018783 -X X X X X X X

LEAD FREE OPTION

HOUSING COLOR OPTIONS

0-NATURAL

1-BLACK

PEGS OPTIONS

0-PLASTIC PEGS

1-METAL BOARD LOCKS

2-SINGLE PLASTIC PEGS

TERMINAL PLATING OPTIONS

0-50u" Ni UNDERPLATE

30u" Au CONTACT AREA

1-50u" Ni UNDERPLATE

15u" Au CONTACT AREA

100u" TIN TAIL AREA

2-50u" Ni UNDERPLATE

GOLD FLASH CONTACT AREA

100u" TIN TAIL AREA

COMPATIBLE ROHS

	DIM "D"	PCB THICKNESS	BOARD LOCKS	DIM "G"
0	2.30 $\pm 0.25$	1.56 $\pm 0.10$		1.70 $\pm 0.15$
1	3.10 $\pm 0.25$	2.36 $\pm 0.10$		2.50 $\pm 0.15$
2	2.54 $\pm 0.25$	1.56 $\pm 0.10$		1.70 $\pm 0.15$
3	1.90 $\pm 0.25$	1.56 $\pm 0.10$		1.70 $\pm 0.15$

TAIL LENGTH OPTIONS

POS OPTIONS

0-36

1-64

2-98

3-164

LEAVE BLANK FOR TERMINAL PLATING 3,4,5  
"LF" FOR TERMINAL PLATING OPTION 0,1,2

PACKAGING OPTIONS

T-SOFT TRAY PACKAGING

M-SOFT TRAY PACKAGING & MYLAR TAPE. SEE FIGURE 1

Y-HARD TRAY PACKAGING (FOR 164P ONLY)

Z-HARD TRAY PACKAGING WITH MYLAR (FOR 164P ONLY)

E-HARD TRAY PACKAGING WITH ANTI-STATIC SHIELDING BAG (FOR 164P ONLY)

R-TAPE & REEL PACKAGING (FOR 36, 64, 98P)

A-TAPE & REEL PACKAGING WITH MYLAR (FOR 36, 64, 98P)

CONNECTOR	#	POS REF.	N	DIM "A"	DIM "B"	DIM "C"	"E"
1 PORT		36	6	7.65	25.00	9.15	6.00
4 PORT		64	20	21.65	39.00	23.15	20.00
8 PORT		98	37	38.65	56.00	40.15	37.00
16 PORT		164	70	71.65	89.00	73.15	70.00



A-TAPE & REEL PACKAGING WITH MYLAR (FOR 36, 64, 98P)

mat'l. code	surface	tolerance	projection	product family	EDGE CARD
tr	ecm no	dr	date	tolerances unless otherwise specified	title
T	T05-0208	M-W	09/15/05	angles $\frac{1}{2}$ X±0.30	PCI EXPRESS GEN3
U	T10-0007	J-H	1/20/10	XX±0.20	CARD EDGE ASSY
V	EX-06-1831	S-T	07/16/14	XXX±0.10	scale 1:1
W	EX-06-2070	S-T	01/23/15	Stone Li	01/23/15
-	-	-	-	engr	Stone Li
-	-	-	-	chr	Stone Li
-	-	-	-	appd	Collins Lu
-	-	-	-	01/23/15	



sheet no	dwg no	sheet 6 of 7	size
10018783			A4

Customer Drawing

form: A4mmXlc

1 |

2 |

3 |

4

PDS: Rel :W

STATUS:Released

Printed: Feb 03, 2015

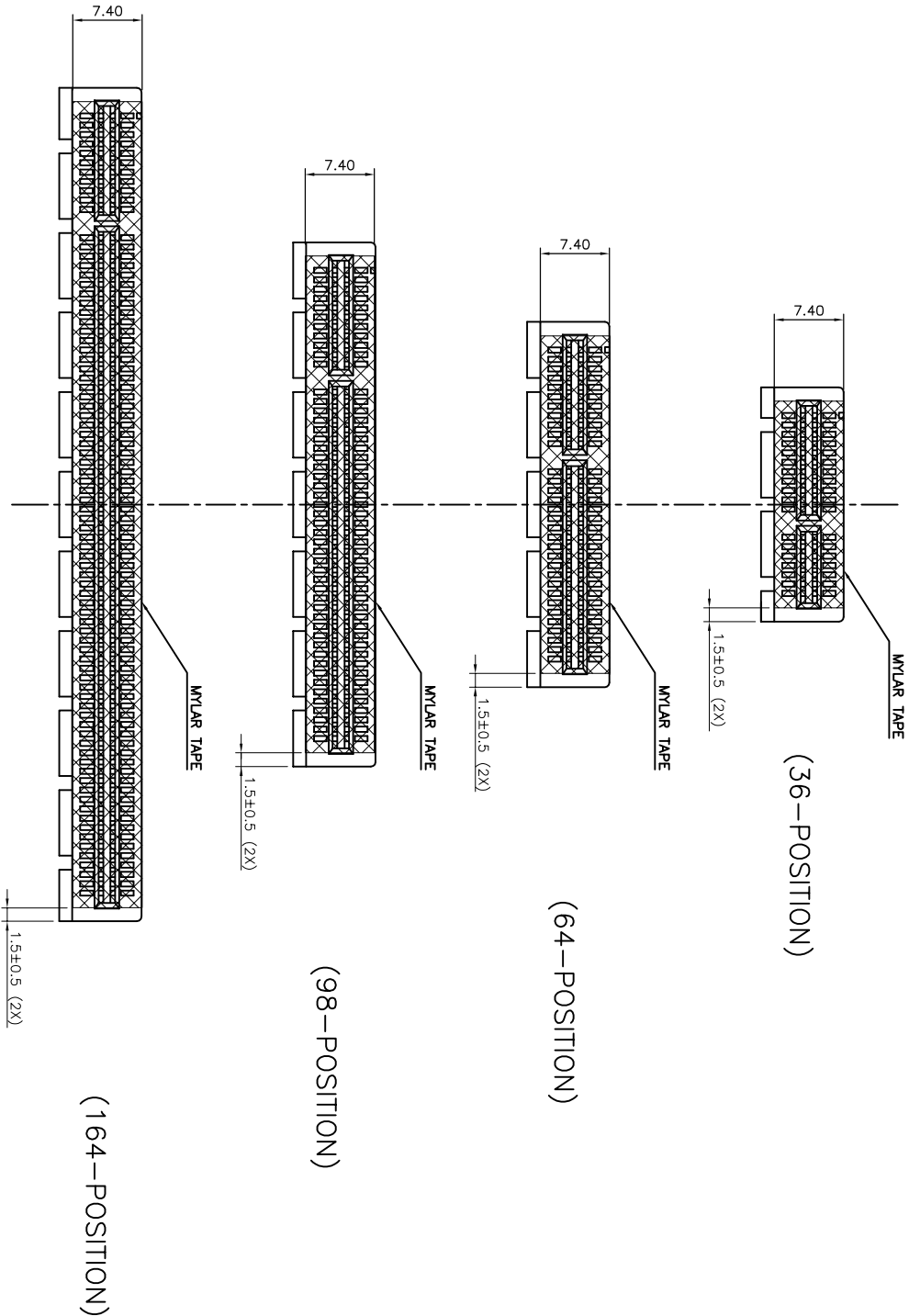


FIGURE 1

mat'l. code			surface sg./tolerance			projection			product family		
lfr	ecn no	dr date	reference unless otherwise specified			MM			title		
T	T00-0200W	W 09/15/05	XXG.30			MM			PCI EXPRESS GEN3		
U	T10-0007	L-H 1/20/10	XXG.20			MM			CARD EDGE ASSY		
V	EXPRESS S-T	07/19/14	XXG.4.10			scale 1.5:1			sheet 7 of 7 size		
W	EXPRESS S-T	01/23/15	Stone LI			01/23/15			A4		
-	-	-	engr			Stone LI			10018783		
-	-	-	chr			/			Customer Drawing		
sheet	revision		dppd Collins Lu			01/23/15					
index	sheet										